
Evaluation of Price's Run Weed and Seed

September 2010



**State of Delaware
Executive Department
Office of Management and Budget
Budget, Planning, Development and Administration**

Statistical Analysis Center
410 Federal Street • Suite 6 • Dover, DE 19901
Phone: (302) 739-4626 • Fax: (302) 739-4630 • www.sac.omb.delaware.gov

Evaluation of Price's Run Weed and Seed

August 2010

Authors

John P. O'Connell, Director

Richard J. Harris, Senior Research Analyst

Delaware Statistical Analysis Center

This program is funded by U.S. Department of Justice, Community Capacity Development Office grants 2007-WS-Q7-0032, 2008-WS-QX-0097, and 2009-WS-QX-0003 through the Delaware Criminal Justice Council. The content of the report is the responsibility of the Delaware Statistical Analysis Center. Views or opinions expressed herein do not necessarily reflect those of the U.S. Department of Justice.

Table of Contents

Introduction	1
Operation Weed and Seed in Wilmington, Delaware – 1992 to 2006	7
Price's Run Weed and Seed Program Overview	8
Violent and Illicit Drug Crime in Wilmington 2004 to 2009	15
Violent Crime in Wilmington – 2004 to 2009	19
Illicit Drug Crime in Wilmington – 2004 to 2009	31
Convictions and Sentencings for Weed and Seed Offenders	43
Delaware SAC Publications on Crime in Wilmington, Delaware	47
Appendices	49

Introduction

Operation Weed and Seed is a federally funded initiative that provides financial and technical assistance to municipalities that seek to create local strategies to address violent crime, illicit drugs, and gang activity in designated high-crime areas. The Weed & Seed strategy consists of four elements: Law Enforcement, Community-Oriented Policing, Prevention, Intervention, and Treatment, and Neighborhood Restoration.

- **Law Enforcement** “weeding” efforts focus on suppressing illicit drug activity and violent crime through increased enforcement, prosecution, adjudication, and supervision of offenders.
- **Community-Oriented Policing** serves as a bridge between “weeding” and “seeding”. The goal of community policing is to reduce neighborhood crime by promoting cooperation and information sharing between residents and the police.
- **Prevention, Intervention, and Treatment** encompasses an array of activities including family services, organized recreation, job and life skills development, mentoring, service projects, educational programs, counseling programs and support programs.
- **Neighborhood Restoration** aims to improve the quality of life in the target neighborhoods by providing economic opportunities for residents, improving housing conditions, reducing blight, and improving the delivery of public services.

The current Weed and Seed site, and third recognized site in Wilmington since 1992, is Census Tract 6.02 in the city’s Price’s Run neighborhood. The Price’s Run Weed and Seed program was funded by a 5-year grant from the Community Capacity Development Office, U.S. Department of Justice Office of Justice Programs.

Description of Price’s Run Weed and Seed Neighborhood

Wilmington, Delaware, located in the Mid-Atlantic region of the U.S., is the largest city in Delaware and the county seat of New Castle County. The 2000 Census of Population and Housing lists the city’s population at 72, 664 residents. Wilmington’s central location along the eastern seaboard makes it accessible via Interstate 95 and Amtrak to New York, Philadelphia, Baltimore and Washington D.C.

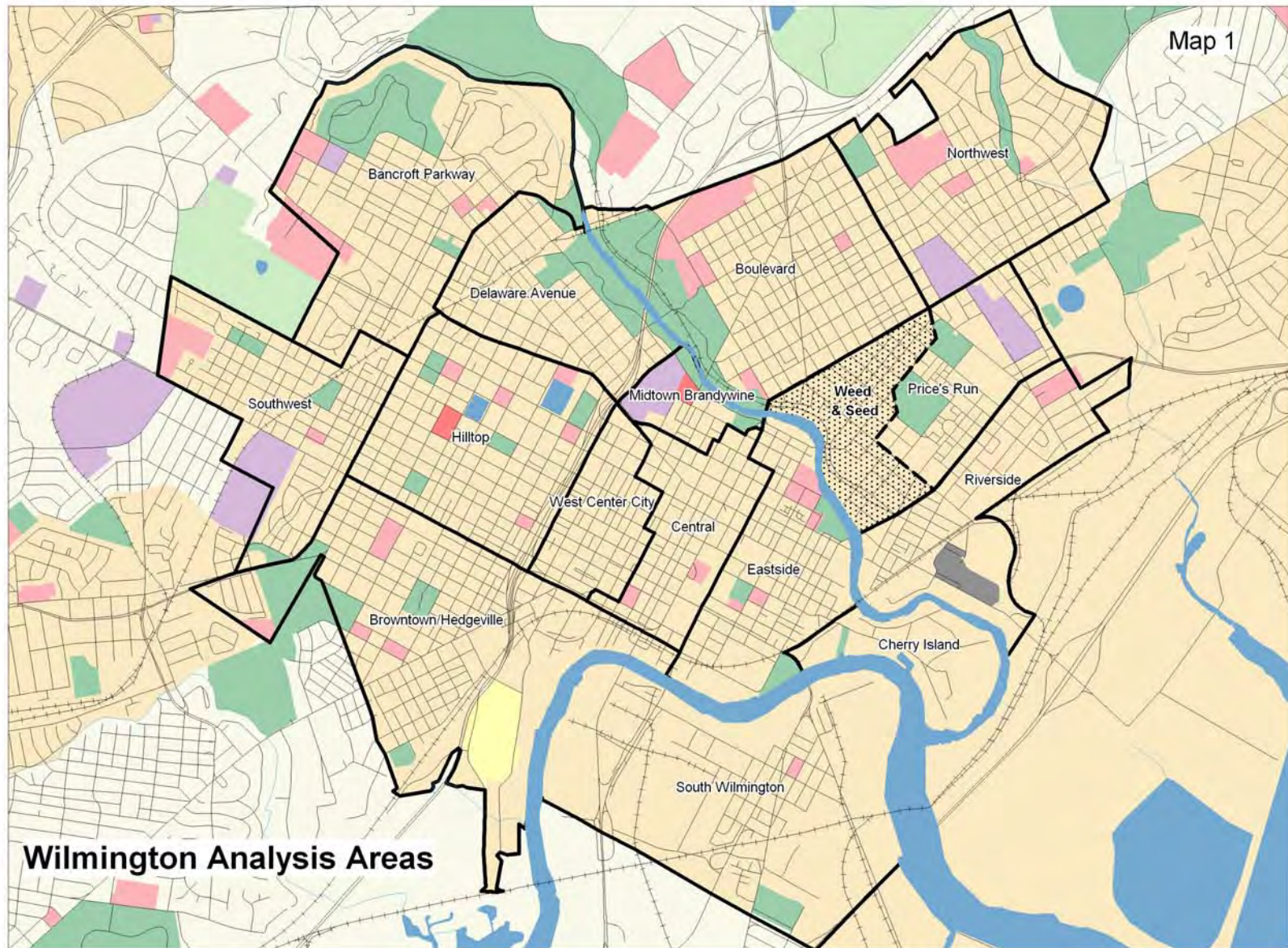
While Wilmington’s easy access to large east coast cities makes it attractive to businesses, it also makes it the city vulnerable to interstate drug trafficking and may be a contributing factor in the city’s high rate of illicit drug use. According to a July 2010 report from the U.S. Department of Health and Human Services entitled “Substate Estimates from the 2006-2008 National Survey on Drug Use and Health”, 12.08 percent of Wilmington residents 12 years or older admitted to using an illicit drug in the past month compared to 8.75 percent for Delaware, 8.5 percent for the northeast, and 8.14 percent for the U.S.

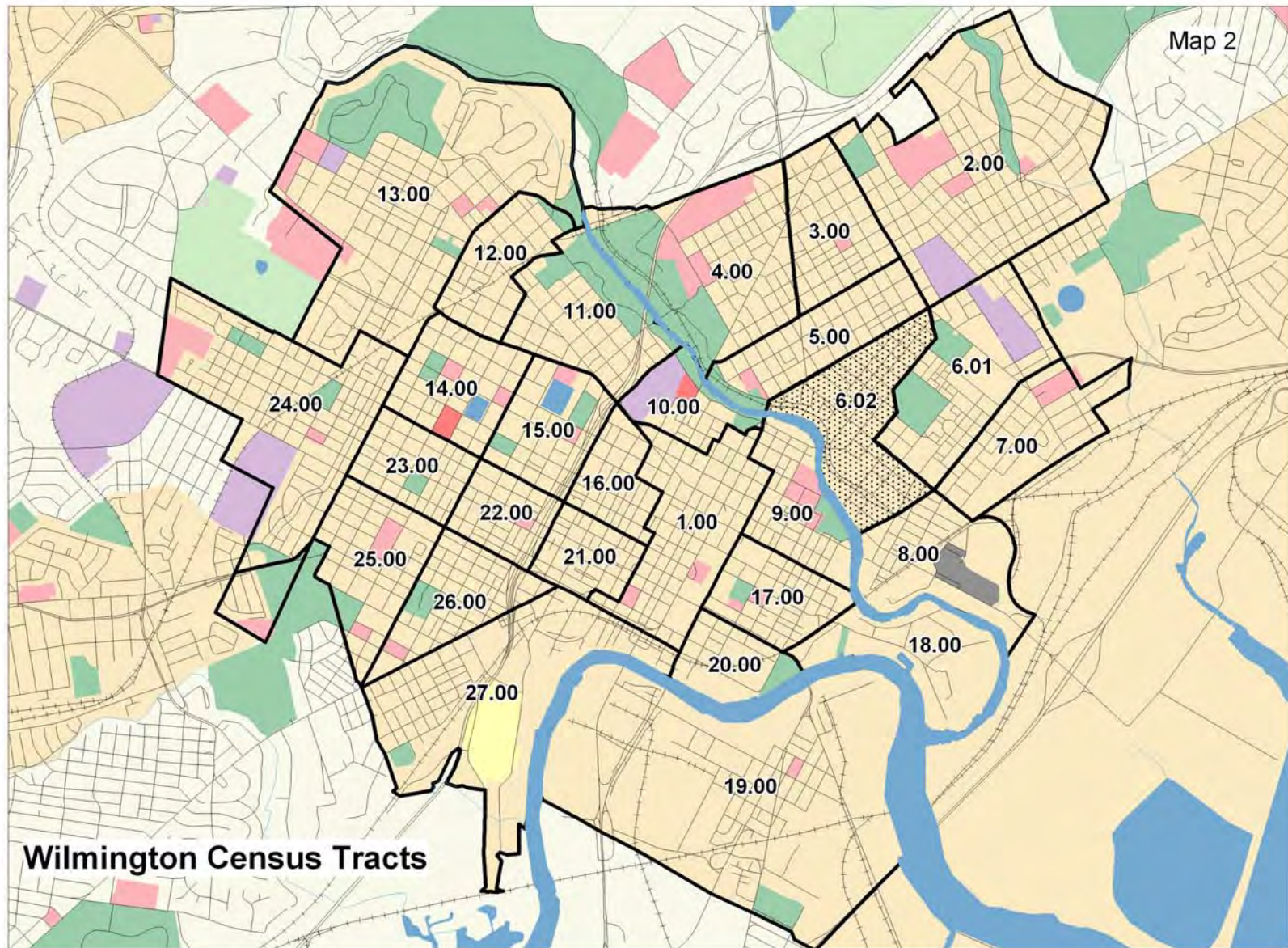
Census Tract 6.02 is located in the Price's Run section of Northeast Wilmington. The boundaries of Census Tract 6.02 are N. Market Street, Danby Street, Pine Street, Spruce Street, Vandever Avenue, Northeast Boulevard, and the Brandywine Creek. Census Tract 6.02 is primarily residential with some commercial and industrial uses. N. Market Street, located at the western boundary of the neighborhood, is a 12-block mixed use district of neighborhood-oriented businesses with some residences. Businesses on N. Market Street include convenience stores, sandwich shops, take-out restaurants, and low-end retail. A waterfront industrial district is located south of E. 16th Street near the Brandywine Creek. While a few light manufacturing businesses still remain, most of the industrial area consists of vacant lots.

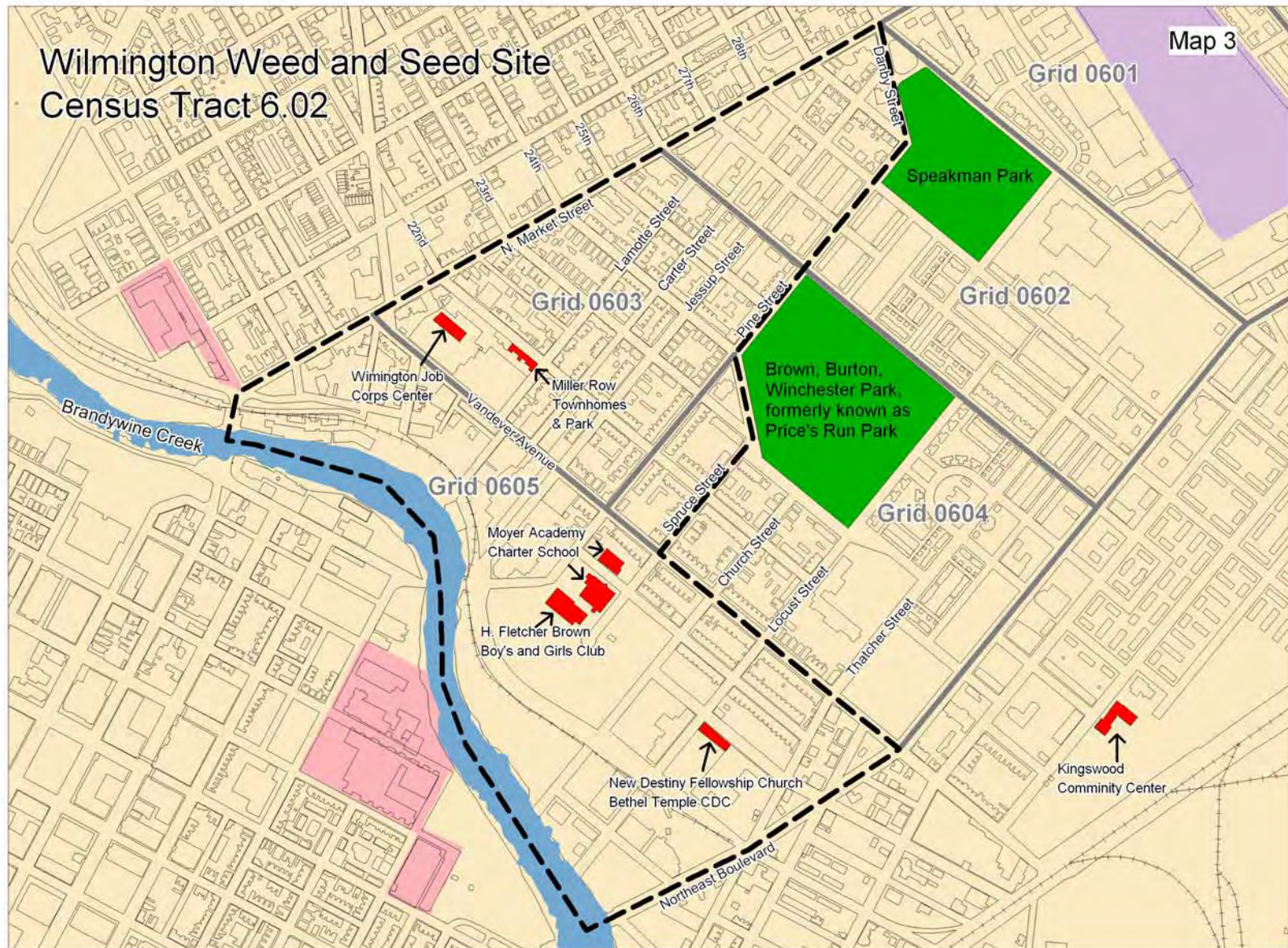
According to the 2000 Census of Population and Housing, 3,167 residents lived in Census Tract 6.02 in 1999. Approximately 91 percent of the area's residents are African-American. The 1999 median household income for residents of Census Tract 6.02 was \$23,141, which equates to 67.8 percent of the Wilmington median household income of \$34,116 and 48.9 percent of the Delaware median household income of \$47,381. 25.8 percent of all persons residing in Census Tract 6.02 in 1999 were living at or below the poverty level. In comparison, 21.3 percent of all Wilmington residents and 9.2 percent of Delaware residents were living at or below the poverty level. Despite the low average income of Census Tract 6.02 residents, the rate of homeownership is slightly higher than the rate for Wilmington. 54 percent of all housing units in Census Tract 6.02 are owner occupied compared to a 50 percent owner occupancy rate for Wilmington.

Census Tract 6.02 consistently ranks among the top five census tracts in Wilmington in reported violent crimes. In 2004, 2005, 2008, and 2009, Census Tract 6.02 generated more violent crime complaints than any other census tract in Wilmington. The most criminally active areas of Census Tract 6.02 is located along the N. Market Street corridor between Vandever Avenue and E. 26th Street, and the narrow streets directly east of N. Market to Spruce Street (including Lamotte, Carter and Jessup Streets). In addition, many long-term vacant buildings in Census Tract 6.02 are in an advanced stage of decay, which contributes to the area's run down appearance.

While residents of Census Tract 6.02 face serious quality of life issues, they also have access to amenities that similar neighborhoods lack. The H. Fletcher Brown Boys and Girl's Club offers recreation and tutoring opportunities for youths residing in the area; Wilmington Job Corp Center offers job training and GED classes for young adults; Nemours Pediatrics offers nursing and pediatric care for infants, children and teens; and a state service center offers HIV testing, emergency assistance, and other services for low income families.







This page is intentionally left blank

Operation Weed and Seed in Wilmington, Delaware – 1992 to 2006

Wilmington has a lengthy history with community based crime control programs that combine community policing and drug enforcement with prevention, intervention and treatment programs. The Eastside Substance Abuse Awareness Program (ESAAP) was the first program of this type in Wilmington. Implemented in 1989, this precursor to Weed and Seed utilized walking patrols, block captain networks, neighborhood watch groups, youth-oriented prevention programs, and no-cost substance abuse treatment on demand to address drug abuse and related crime in Wilmington's Eastside neighborhood.

A 1993 evaluation of the Eastside Substance Abuse Awareness Program found that community policing causes a temporary increase in calls for police service as officers encourage residents to report crime. This increase was followed by a decrease in calls for service and an increase in arrests as police follow up on tips provided by residents. One unresolved issue identified in the report, however, is the displacement of drug related crime to nearby areas. The Eastside Substance Abuse Awareness Program was funded with a \$90,000 grant from the Bureau of Justice Assistance.¹

Wilmington was one of the first cities in the U.S. to receive federal funds to implement a Weed and Seed program. In 1992, Delaware received a \$1,100,000 grant from the U.S. Department of Justice to implement the Weed and Seed strategy in the city's Hilltop and West Center City neighborhoods, two neighborhoods that were heavily impacted by open-air drug activity. A total of \$2,150,000 in federal Weed and Seed grant funds and \$200,000 in forfeiture funds were used for community policing, undercover operations, and prevention programs over an 8 year period from 1992 to 2000.

A 2001 evaluation of Wilmington's Weed and Seed program found that the program was most effective at reducing open-air drug crime when the law enforcement and community policing components received adequate funding. The reports also found that displacement of open-air drug activity to within a 1 to 3 block area was common. While the evaluations found that Weed and Seed law enforcement efforts produced mixed results overall, it concluded several factors, including the decision to expand the boundaries of the Weed and Seed area include the Browntown/Hedgeville neighborhood, poorly timed cuts in law enforcement funding, competition between neighborhoods for resources, and management-related issues worked to the detriment of the program.²

In 2002, the boundary of the Wilmington's Weed and Seed neighborhood was downsized to include the West Center City neighborhood only. A 2005 evaluation of the Wilmington Weed and Seed found the West Center City program did not experience the same organizational and management issues that plagued the previous program.³ The West Center City Weed and Seed program was relatively successful at suppressing drugs and violent crime while the program was still funded, but crime in the neighborhood returned after the program ended.

¹ Harris, R, O'Connell, J, Eastside Substance Abuse Awareness Program Evaluation, January 1993

² Harris, R, O'Connell, J, Evaluation of Operation Weed & Seed in Wilmington, Delaware, July 2001

³ Harris, R, O'Connell, J, Evaluation of Operation Weed & Seed in Wilmington, Delaware–2001 to 2004, August 2005

Price's Run Weed and Seed Program Overview

Since 2006, The Price's Run Weed and Seed program has received over \$650,000 to develop and implement strategies to improve the quality of life for residents of Census Tract 6.02. As required by the federal Community Capacity Development Office, an executive committee was formed to oversee all policy, strategic, and funding decisions related to Price's Run Weed and Seed. Members of the executive steering committee included representatives from the U.S. Attorney and state Attorney General's office, state, federal and local law enforcement agencies, state and federal probation offices, service providers, and residents of Price's Run. The first planning meeting of the Price's Run Weed and Seed Executive Steering Committee was held in September 2005.

The initial Weed and Seed grant of \$175,000 was awarded in March 2006. First year funds were used to pay overtime for police, to hire a Weed and Seed program coordinator, to provide funds to allow the H. Fletcher Boys and Girls Club safe haven to remain open late on weekends, and to fund an academic enrichment program at the Wilmington Job Corps Center. Subsequent grants were used to fund drug and delinquency prevention programs, an anti-violence summit, a dedicated part-time probation officer, and supplies for maintaining a community park.

As the seeding partner for Price's Run Weed and Seed, the Bethel Temple Community Development Corporation (CDC) played an important role in the program. Closely affiliated with New Destiny Fellowship Church, Bethel Temple CDC provided office space and facilities to the Weed and Seed coordinator and acted as a neighborhood safe haven along with H. Fletcher Brown Boys and Girls Club.

Law Enforcement and Community Policing

The Weed and Seed Law Enforcement Subcommittee, made up of representatives from the U.S. Attorney and state Attorney General's offices, Wilmington PD, U.S. Marshals, FBI, DEA, ATF, state and federal probation offices, was responsible for developing crime reduction strategies in the Price's Run Weed and Seed area. Weed and Seed grant funds were used to pay police overtime for safety checkpoints and enforcement of quality of life crimes.

In anticipation of the Weed and Seed grant, the Wilmington Police Department assigned 2 additional police officers to the Price's Run neighborhood starting in October 2005, months before the initial Weed and Seed grant was awarded. From October 2005 to May 2006, officers assigned to the Weed and Seed area made 101 drug related arrests, 45 arrests for quality of life crimes, 10 arrested for weapon offenses, and 18 guns seizures. From March to May 2006, police handled 390 complaints, made 132 community contacts, made 90 pedestrian stops, and handled 470 special attention assignments. Starting in 2006, a Weed and Seed law enforcement grant was used to pay for police overtime operations that resulted in 98 vehicle stops, 8 traffic summons, 2 capias arrests, 49 warrant attempts, and 6 executed warrants. (Source: Delaware Criminal Justice Council, 2010)

In 2009, a dedicated probation officer from the Delaware Department of Correction was hired part-time with Weed and Seed funds to conduct curfew checks and warrant attempts for probationers residing in Census Tract 6.02. Weed and Seed officers also held educational seminars to inform the public about the police department and distributed informational literature to residents of Census Tract 6.02.

Fugitive Safe Surrender, a successful and well publicized weeding operation in Price's Run, took place at New Destiny Fellowship Church from April 29 to May 2, 2009. Led by the U.S. Marshals Service and Delaware courts, this 4-day operation allowed persons with outstanding warrants to surrender to law enforcement in a non-threatening environment. Participants were able to meet with an attorney, be seen by a judge, and have their cases adjudicated on-site. While the program did not provide amnesty, participants were offered favorable consideration for turning themselves in voluntarily. A total of 1,073 fugitives surrendered to law enforcement (including 101 felons) and 4,131 warrants were cleared as a result of Fugitive Safe Surrender.

Prevention, Intervention and Treatment

Bethel Temple CDC, H. Fletcher Brown Boys and Girls Club, the Wilmington Job Corps Center, and Nehemiah Gateway CDC, the Delaware Center for Justice and Project Stay Free received Weed and Seed funds for the following programs.

- Bethel Temple CDC, the primary seeding partner and safe haven, sponsored a Weed and Seed afterschool program housed at New Destiny Fellowship Church, with the Weed and Seed coordinator acting as instructor and counselor. In addition to after-school tutoring and summer education enhancement programs, the Bethel Temple CDC program also offered:
 - domestic violence and dating awareness presentations for 6th to 8th grade students. Two separate presentations were held and a total of 150 students attended.
 - a 16-week Abstinence Program for 11 to 15 years olds. 25 youth graduated from the program.
 - a Video Smart program which integrates recreation (video gaming), education, and non-violence. Two sessions of this program were held and a total of 52 youths participated.
- The H. Fletcher Brown Boys and Girls Club, another safe haven in Census Tract 6.02, offers tutoring and other after school programs. The Boys and Girls Club facility includes a computer room, a game area, a gymnasium and an indoor swimming pool. Weed and Seed funds allowed the club to extend their hours of operation to evenings and weekends.
- The Wilmington Job Corps Center offers courses in culinary arts, facilities maintenance, office administration, and nursing assistant training, GED and High

School Diploma classes, English literacy education, and a college preparation program. Weed and Seed funds were used to support an afterschool academic enrichment and tutoring program to help Job Corps students raise their GED scores. A total of 80 students attended the program over 2 sessions.

- Nehemiah Gateway CDC is a faith based non-profit corporation dedicated to increasing economic and entrepreneurial opportunities in low income neighborhoods. Weed and Seed funds were used to organize and conduct a business skills and professional development conference for business owners in the Weed and Seed area. Topics of discussion included using technology to streamline a business, record keeping, and money management. 21 business owners from the Weed and Seed area attended the conference and 10 registered for ongoing business development workshops.
- The Delaware Center of Justice, a non-profit United Way Agency, used Weed and Seed funds to help pay for the DCJ Girl's Teen Summit, held in October 2008. The summit targeted at risk girls between the ages of 11 and 15 years old who lived in the 19801 and 19802 zip codes. The two topics of the summit were "From There to Here", which discussed overcoming the challenges associated with living in neighborhoods with gangs and gun violence, and "Bridging the Gap Between law Enforcement and the Community".
- Project Stay Free is a community-based nonprofit that provides case management, substance abuse counseling, mental health evaluations, and family support services to juvenile offenders who are under the supervision of the state Division of Youth Rehabilitative Services. Weed and Seed funds were used to support the Saturday Youth Academy at Kingswood Community Center. The Saturday Youth Academy offers 6 to 8 weeks of educational sessions for youth who were adversely affected by a family member's substance abuse or incarceration. (Source: Delaware Criminal Justice Council, 2010)

Table 1
Federal Weed and Seed Grant Expenditures by Program and Agency

Agency	Program	2006	2007	2008	2009
Bethel Temple CDC	Weed and Seed Coordinator	\$62,000.00	\$53,490.00	\$49,716.87	\$44,800.00
Brown Boy's and Girl's Club	Safe Haven Activities	\$5,000.00	\$0.00	\$0.00	\$3,880.00
Criminal Justice Council	Weed and Seed Training	\$7,500.00	\$7,500.00	\$0.00	\$2,500.00
	Administrative	\$7,500.00	\$7,500.00	\$7,500.00	\$7,500.00
Delaware Center for Justice	Girl's Teen Summit	\$0.00	\$0.00	\$6,758.00	\$0.00
Delaware Department of Correction	Weed and Seed Probation Officer	\$0.00	\$20,000.00	\$0.00	\$8,400.00
Delaware Statistical Analysis Center	Weed and Seed Evaluation	\$0.00	\$7,500.00	\$5,000.00	\$12,000.00
Greater Brandywine Village Revitalization	Neighborhood Beautification	\$0.00	\$5,000.00	\$0.00	\$0.00
	Corridor Manager/Community Organizer	\$0.00	\$0.00	\$0.00	\$2,120.00
Kingswood Community Center	Project Stay Free	\$0.00	\$0.00	\$2,900.00	\$27,400.00
Nehemiah Gateway CDC	Prevention Specialty Programs	\$0.00	\$10,000.00	\$0.00	\$0.00
Wilmington Job Corps Center	Academic Enrichment	\$5,000.00	\$15,000.00	\$7,125.13	\$7,200.00
Wilmington Police Department	Weed and Seed Law Enforcement	\$88,000.00	\$74,010.00	\$71,000.00	\$26,200.00
Total Expended or Allocated for Weed and Seed Programs as of 8/2010		\$175,000.00	\$200,000.00	\$150,000.00	\$142,000.00

Neighborhood Restoration Initiatives

Greater Brandywine Village Revitalization (GBVR) and Habitat for Humanity of New Castle County serve as neighborhood restoration partners for Price's Run Weed and Seed. GBVR, is a not-for-profit CDC committed to rebuilding the historic Brandywine Village area of Wilmington. Habitat for Humanity is an international organization that builds affordable housing with the help of volunteers.

Through the partnership of GBVR and Habitat for Humanity, one of the most blighted areas of Census Tract 6.02 was redeveloped into a new townhouse community. The Millers Row Townhouses, a development of 7 new homes built by Habitat for Humanity, resulted from this partnership.

In addition to acquiring and arranging the demolition of the vacant city owned properties that once stood on the site of Millers Row, GBVR was responsible for planning and arranging the construction of a small neighborhood park across the street from Miller's Row. Meetings with GBVR and state Department of Transportation officials also resulted in new decorative street lighting and sidewalks for the development.

Because of these efforts, Price's Run was the only Weed and Seed site in Wilmington to have direct involvement with the development of a substantive "bricks and mortar" neighborhood restoration project. The following photographs show how the 22nd and Lamotte area looked before and after the Millers Row townhomes were built.



These photographs on this page, taken in April of 2006, show the poor condition of vacant houses on E. 22nd Street between N. Market and Lamotte Streets in Census Tract 6.02. These buildings were eventually demolished and replaced with new housing.





These pictures show the same block with new houses, sidewalks and lighting. The Millers Row Townhouses, a collaborative project by Habitat for Humanity and GBVR, completely transformed one of the most blighted blocks in Census Tract 6.02.



This page is intentionally left blank

Violent and Illicit Drug Crime in Wilmington 2004 to 2009

Past Weed and Seed evaluations have shown that the impact of Weed and Seed law enforcement and community policing efforts on violent and drug related crime produced mixed results. This was also the case for Price's Run Weed and Seed. While the analysis shows that Weed and Seed law enforcement efforts were more effective at suppressing drug crime than violent crime, both showed some decreases over the duration of the program. Violent crime in the Price's Run Weed and Seed area decreased in 2007, followed by increases in 2008 and 2009. Drug related crime declined over two consecutive years—2007 and 2008—followed by a steep increase in 2009. These results demonstrate that Weed and Seed can be effective at reducing crime at the neighborhood level, but sustaining the program's initial momentum can be difficult.

This analysis employs Wilmington Crime Index maps to present complex spatial data in an easy to understand visual format. The Wilmington Crime Index is an empirical mapping technique for assessing the effectiveness of crime control efforts in each of Wilmington's 87 reporting areas. Based on a year by year chronology of reported crime and arrests, the index is useful for identifying areas where crime reduction efforts are successful and areas where additional policing resources are needed.^{3,4} A description of the color coding scheme used in the crime index are shown on below.

Wilmington Crime Index Categories

Stable Areas (Blue) – Complaints were below the city average for the current year

Crime is Down (Green) – Complaints were higher than the city average and both arrests and complaints were lower than the previous year

Arrests are Up (Light Green) – Complaints were higher than the city average, complaints were lower or the equal to the previous year, and arrests were higher than the previous year.

At Risk (Yellow) – Complaints were above the city average but less than the high crime threshold of 50 complaints (for violent crime) or 35 complaints (for drug crime), complaints and arrests were higher than or equal to the previous year.

Hot Spots (Orange) – High crime areas with at least 50 violent crime complaints or 35 drug complaints in the current year, complaints were higher than the previous year, and arrests were higher than or equal to the previous year.

Saturated (Red) – High crime areas with at least 65 violent crime complaints or 50 drug complaints in the current year, complaints were higher than the previous year, but arrests were lower than the previous year.

³Harris, R, O'Connell, J, Evaluation leads to a Better Understanding-Lessons Learned-The Wilmington Crime Index, Justice Research and Policy, 2003

⁴Harris, R, O'Connell, J, The Wilmington Crime Index, Weed and Seed Best Practices: Evaluation Based Series, Vol 1, 2006

Table 2
Wilmington Analysis Areas, Census Tracts and Grids

Analysis Area	Census Tract	Grid
Central	1	0101, 0102, 0103, 0104, 0105, 0106
Northwest	2	0201, 0202, 0203, 0204, 0205, 0206
Boulevard	3	0301, 0302
	4	0401, 0402, 0403, 0404
	5	0501, 0502
Price's Run	6.01	0601, 0602*, 0604*
	6.02	0602*, 0603, 0604*, 0605
Riverside	7	0701, 0702
	8	0801, 0802
Eastside	9	0901, 0902, 0903, 0904
	17	1701, 1702, 1703, 1704
	20	2001
Midtown Brandywine	10	1001, 1002
Delaware Avenue	11	1101, 1102, 1103
	12	1201, 1202
Bancroft Parkway	13	1301, 1302, 1303, 1304, 1305, 1306
Hilltop	14	1401, 1402
	15	1501, 1502,
	22	2201, 2202
	23	2301, 2302
West Center City	16	1601, 1602
	21	2101, 2102
Cherry Island	18	1801, 1802
South Wilmington	19	1901, 1902, 1903, 1904, 1905, 1906, 1907, 1908, 1909
Southwest	24	2401, 2402, 2403, 2404, 2405
Browntown/Hedgeville	25	2501, 2502, 2503, 2504
	26	2601, 2602
	27	2701, 2702

*Parts of Grids 0602 and 0604 lie within the boundaries of Census Tracts 6.01 and 6.02

Map 4 shows the grid boundaries used for the Wilmington Crime Index. Grids are subdivisions of the city's census tracts. The first two digits of the grid number correspond with the census tract that the grid falls within. The exceptions are Grids 0602 and 0604 which both overlap two census tracts, Census Tracts 6.01 and 6.02 in Price's Run. Map 4 is provided as an aid for comparing the complaint and arrest data provided on Tables 3 thru 6. The Price's Run Weed and Seed area is shown as a shaded area and includes all or parts of Grids 0602, 0603, 0604, and 0605. Table 2 shows the relationship between Wilmington's analysis areas, census tracts and grids.

This page is intentionally left blank

Violent Crime in Wilmington – 2004 to 2009

Maps 5 to 10 show the Wilmington Crime Index for violent crime complaints and arrests in Wilmington for the years 2004 to 2009. Violent crimes include aggravated assault, burglary, homicide, robbery and weapon offenses. Table 3 shows violent and illicit drug crime complaints and arrests in Wilmington from 2003 to 2009.

[2004] 2,115 violent crime complaints were reported in Wilmington in 2004, an increase of 5.8 percent compared to the 2003 total of 2,011 complaints. More than half of the city's 28 census tracts reported an increase in violent crime in 2004.

Contributing to the increase was a 17.9 percent increase in aggravated assault complaints, a 19.5 percent increase in robbery complaints, and a 10.1 percent increase in weapons complaints. Arrests for violent crime in Wilmington fell by 4.1 percent in 2004, from 798 arrests in 2003 to 765 arrests in 2004.

Price's Run, Boulevard, Eastside, Riverside and West Center City all reported an increase in violent crime in 2004. Map 5 shows several of "At Risk" areas and a few "Hot Spot" and "Saturated" areas in the neighborhoods that reported an increase in violent crime in 2004. Areas that reported fewer violent crimes in 2004 include Hilltop, South Wilmington, and Browntown/Hedgeville.

The Price's Run Weed and Seed Area/Census Tract 6.02 generated more violent crime complaints in 2004 than any other census tract in Wilmington. Violent crime complaints from Census Tract 6.02 rose by 58.3 percent to 182 complaints in 2004, while arrests for violent crime in Price's Run rose by 11.7 percent to 67 arrests. Grid 0603, the most criminally active grid in the Census Tract 6.02, accounted for 59.8 percent of the 182 violent complaints reported from Census Tract 6.02 in 2004. Grid 0603, shown as a "Hot Spot" area Map 5, generated 109 violent crime complaints in 2004, and increased 118 percent compared to the 2003 total of 50 complaints. Arrests for violent crime in Grid 0603 remained at the 2003 level of 39 arrests.

[2005] Violent crime complaints in Wilmington rose by 19.4 percent in 2005 to 2,156 complaints. 16 of the city's 28 census tracts reported an increase in violent crime compared to the previous year. Complaints for aggravated assault were down 18.9 percent, robbery complaints were down 16.3 percent, and weapon complaints were down 9.6 percent. Arrests for violent crime in Wilmington were down 10.6 percent in 2005 to 684 arrests. Areas that reported an increase in violent crime in 2005 include Browntown/Hedgeville, South Wilmington, Hilltop, and Delaware Avenue.

Map 6 shows a notable decrease in violent crime along the N. Market Street corridor, and this may be related to the additional police patrols that were assigned to Census Tract 6.02 in 2005. Map 6 shows an increase in the number of "At Risk" and Hot Spot" areas in Hilltop, Browntown/Hedgeville, and Delaware Avenue.

The Price's Run Weed and Seed Area/Census Tract 6.02 generated 156 violent crime complaints in 2005, a decrease of 14.3 percent compared to the 2004 total of 182

complaints. Violent crime arrests in Census Tract 6.02 were also down 28.4 percent in 2005 to 48 arrests. Map 6 shows that violent crime complaints and arrests were down in all parts of Census Tract 6.02 except Grid 0605, located south of Vandever Avenue to the Brandywine Creek. Violent crime complaints in Grid 0605 were up 77.4 percent to 55 complaints in 2005 and arrests for violent crime in Grid 0605 were up 83.3 percent to 22 arrests.

[2006] Reported violent crime in Wilmington reached its highest point in 2006.

2,641 violent crime incidents were reported in Wilmington in 2006, a 22.5 percent increase above the 2005 total of 2,156 complaints. Violent crime complaints were up in 20 of the city's 28 census tracts in 2006. The increase in violent crime complaints was fueled by a 39.6 percent increase in aggravated assault complaints, a 21.1 percent increase in burglary complaints, a 38.6 percent increase in robbery complaints, and a 34.3 percent increase in weapon complaints. Arrests for violent crimes in Wilmington were up 25.1 percent in 2006, from 684 arrests in 2005 to 856 arrests in 2006. Violent crime arrests were up in 21 of the city's 28 census tracts in 2006.

Neighborhoods that reported an increase in violent crime in 2006 include Boulevard, Browntown/Hedgeville, Eastside, Hilltop, Northwest, Price's Run, and West Center City. The increase in the number of "Hot Spot" and "Saturated" areas on Map 7 reflect the increase in violent crime complaints and arrests that occurred in 2006.

Violent crime complaints in the Price's Run Weed and Seed area/Census Tract 6.02 rose by 5.1 percent to 164 complaints in 2006, while arrests for violent crimes in Census Tract 6.02 increased by 18.8 percent to 57 arrests. Grid 0605, located between Vandever Avenue and the Brandywine Creek, was the only area in Census Tract 6.02 to generate fewer violent crime complaints and arrests than the previous year. Violent crime complaints in Grid 0605 were down 23.6 percent to 42 complaints in 2006, and arrests for violent crime in Grid 0605 were down 13.6 percent to 19 arrests in 2006. Map 7 shows Grid 0605 as the only "Crime is Down" area in Census Tract 6.02.

[2007] 2,084 violent crime complaints were reported in Wilmington in 2007, a decrease of 21.1 percent compared to the 2006 total of 2,641 complaints. Violent crime complaints were down in 26 of the city's 28 census tracts in 2007. Aggravated assault complaints in Wilmington were down 45 percent, burglary complaints were down 31.9 percent, and weapons complaints were down 2.1 percent in 2007. Arrests for violent crimes were down 1.4 percent in 2007, from 856 arrests in 2006 to 844 arrests in 2007.

Map 8 shows that most areas of the city reported fewer violent crime complaints and arrests in 2007. Map 8 shows that large areas of the city fall under the "Crime is Down" and "Arrests are Up" categories, indicating that volume of violent crime complaints in these areas are lower than the previous year.

In the Price's Run Weed and Seed Area/Census Tract 6.02, violent crime arrests were down 20.1 percent in 2006 to 131 complaints. and arrests for violent crimes were down 12.3 percent to 50 arrests. Map 8 shows that all grids in Census Tract 6.02 are in the

“Crime is Down” category, indicating a reduction in violent crime arrests and complaints throughout the Weed and Seed area in 2007.

[2008] Reported violent crime in Wilmington increased by 5.9 percent in 2008, from 2,084 complaints in 2007 to 2,206 complaints in 2008. Violent crime complaints were up in 17 of the city’s 28 census tracts. The increase in complaints was caused primarily to a 16.3 percent increase in reported burglaries, and a 7.3 percent increase in reported weapons offenses. Arrests for violent crime were also up in from 844 arrests in 2007 to 912 arrests in 2008.

Reported violent crime was up in Boulevard, Eastside, Hilltop, Price’s Run and Riverside. Map 9 shows an increase in the number of “At Risk” and “Hot Spot” areas where violent crime complaints and arrests increased compared to the previous year.

The Price’s Run Weed and Seed Area/Census Tract 6.02 led all other Wilmington census tracts in violent crime complaints in 2008. Census Tract 6.02 generated 154 violent crime complaints in 2008, an increase of 17.6 percent over 2007 total of 131 complaints. Arrests for violent crimes in Census Tract 6.02 were up 24 percent in 2008, from 50 arrests in 2007 to 62 arrests in 2008. In Grid 0603, violent crime complaints increased from 73 complaints in 2007 to 103 complaints in 2008 while arrests in Grid 0603 increased from 23 arrests in 2007 to 30 arrests in 2008.

Map 9 shows that violent crime complaints and arrests in Census Tract 6.02 were up in Grids 0603 and grids 0605, but arrests for violent crime rose as complaints fell in Grids 0602 and 0604. Grid 0605, shown as a “Hot Spot” on Map 9, generated more violent crime complaints than any other grid in Wilmington in 2008.

[2009] Reported violent crime in Wilmington decreased by 4.1 percent in 2009, from 2,206 complaints in 2008 to 2,116 complaints in 2009. The slight decrease in violent crime was attributed to a 14.9 percent drop in robbery complaints and a 13.9 percent drop in weapon complaints. Violent crime complaints were down in 15 of the city’s 28 neighborhoods. Arrests for violent crime in the city were also down 4.7 percent in 2009, from 917 arrests in 2008 to 874 arrests in 2009.

Map 10 shows an increase in “Crime is Down” areas where violent crime complaints and arrests decreased compared to the previous year. Despite the decrease in violent crime in Wilmington overall, reported violent crime was up in the Boulevard, Southwest and South Wilmington neighborhoods. Grid 2301 in Hilltop and Grid 1602 in West Center City are shown as “Saturated” in 2009.

Census Tract 6.02 generated more violent crime complaints than any other census tract in Wilmington in 2009. Violent crime complaints in Census Tract 6.02 increased by 8.4 percent in 2008 to 167 complaints with Grids 0602 and 0604 accounting for the increase in violent complaints. Arrests for violent crime in Census Tract 6.02 were down 7.8 Percent to 59 arrests. Map 10 shows violent crime complaints were down in the two most problem areas in Census Tract 6.02, Grids 0603 and 0605.

Chart 1
**Violent Crime Complaints and Arrests in the Price's Run
 Weed and Seed Area - Census Tract 6.02**

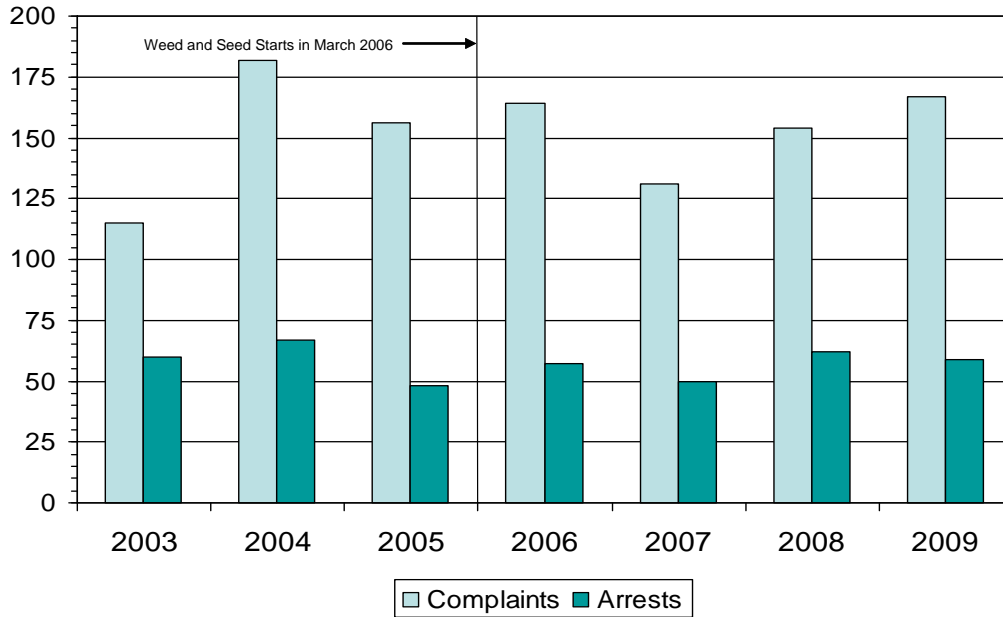


Chart 2
**Violent Crime Complaints and Arrests in Wilmington
 (Census Tract 6.02 Not Included)**

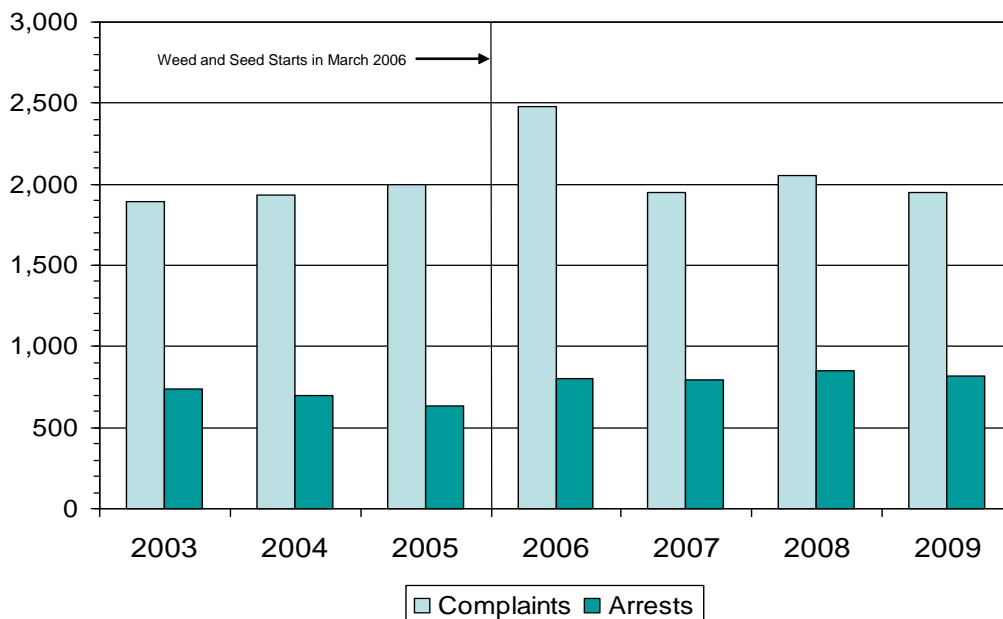
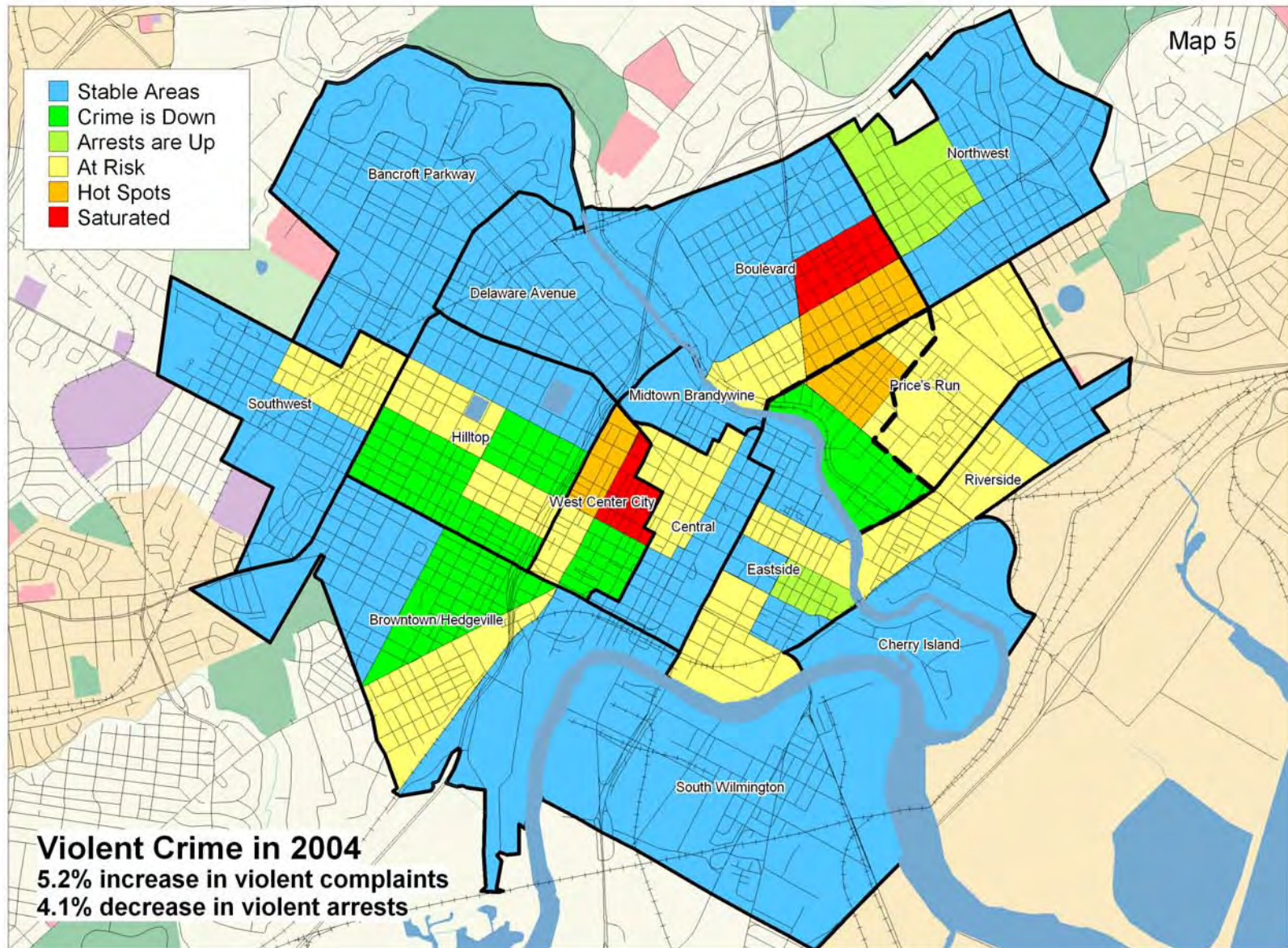
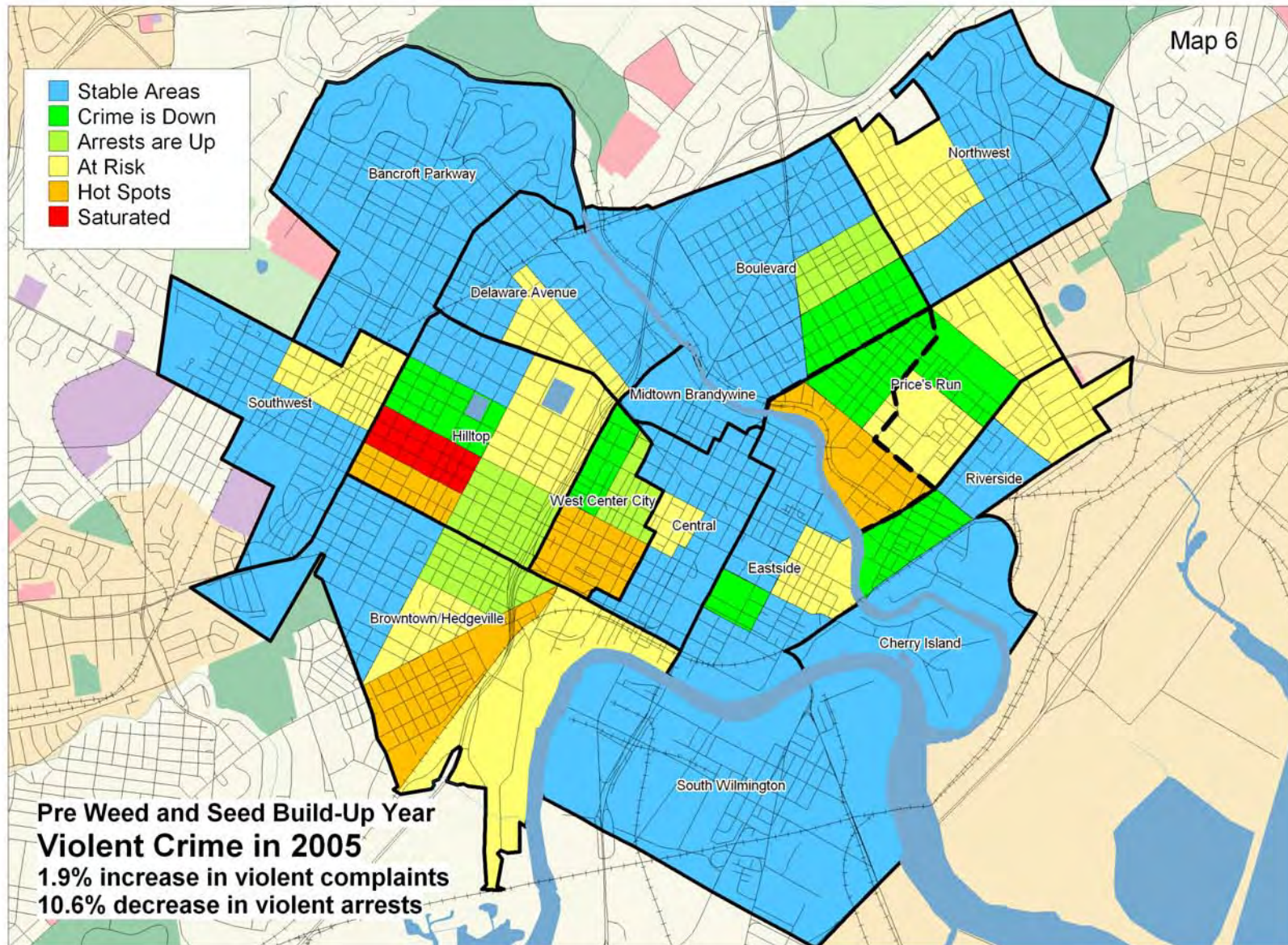
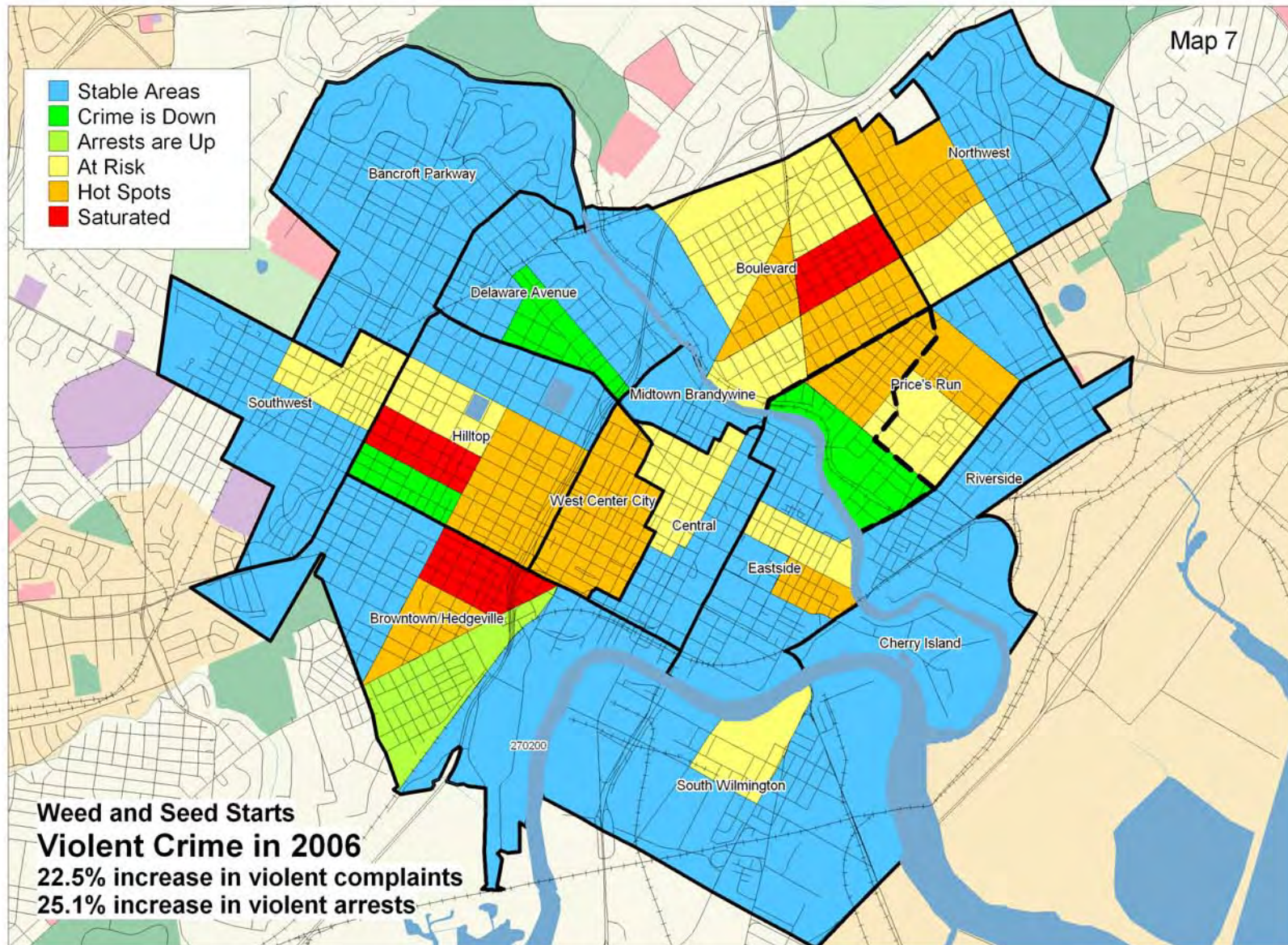


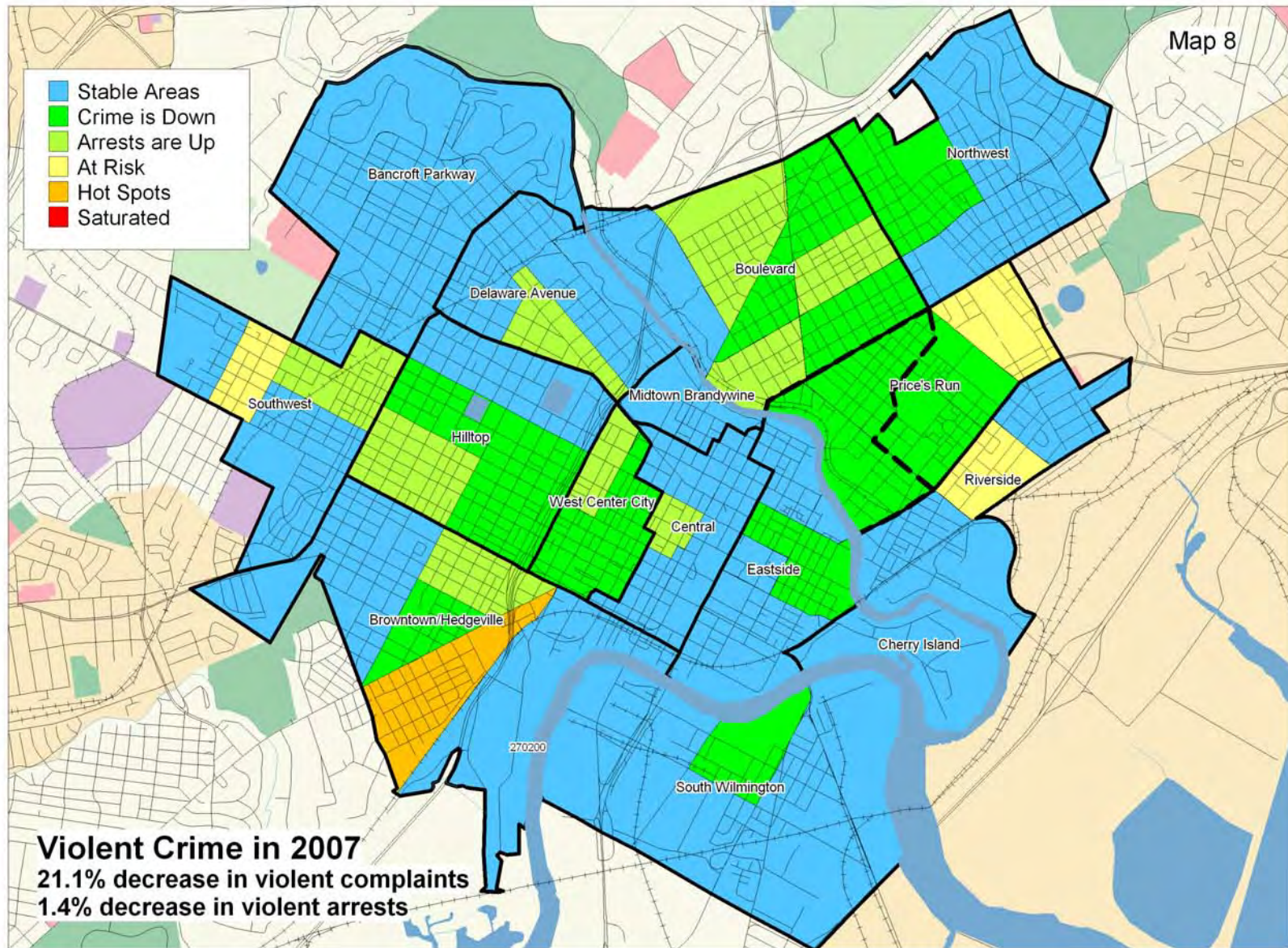
Table 3
Violent Crime Complaints and Arrests by Census Tract

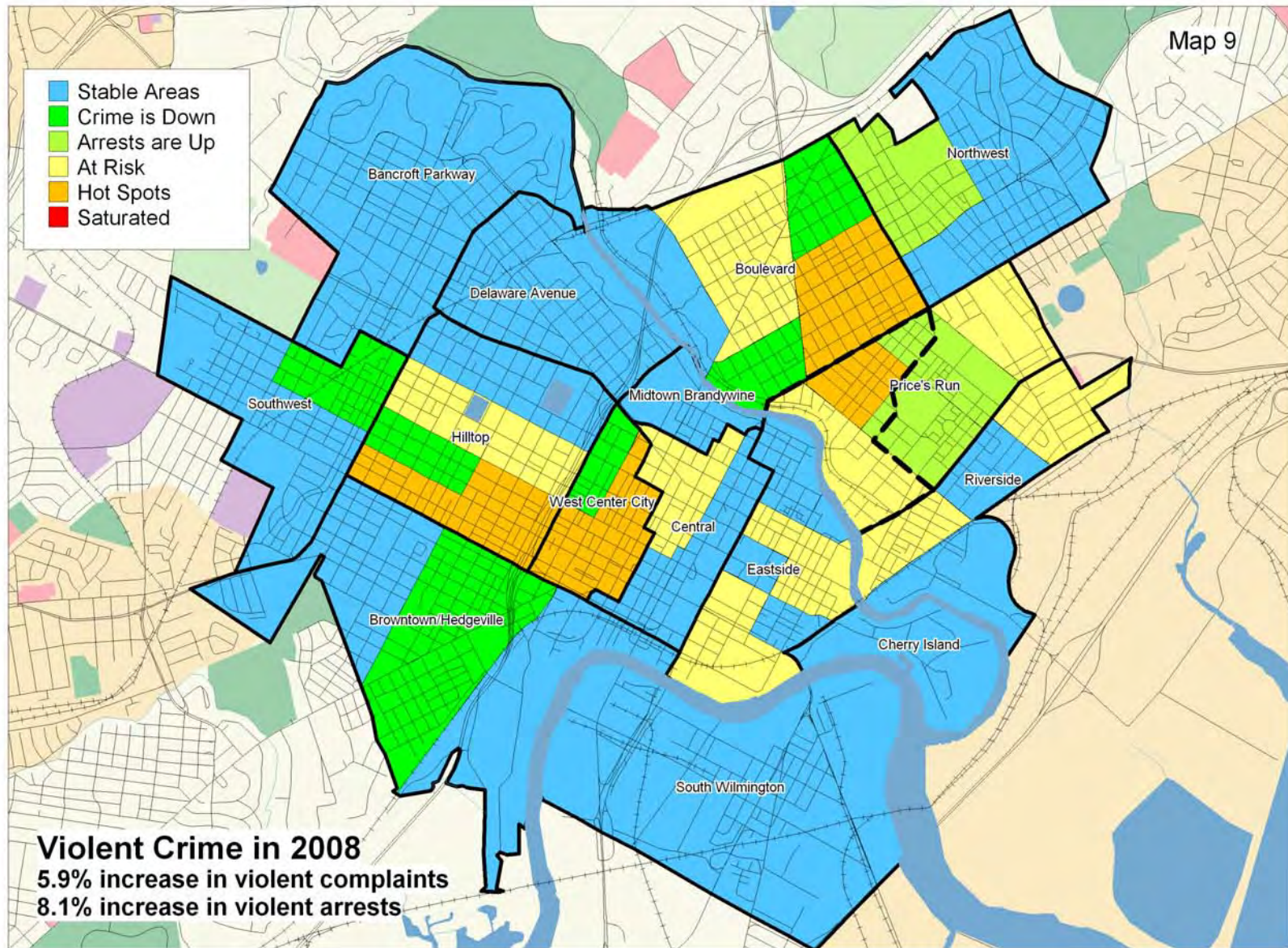
Analysis Area	Census Tract	2003		2004		2005		2006		2007		2008		2009	
		Complaints	Arrests	Complaints	Arrests	Complaints	Arrests	Complaints	Arrests	Complaints	Arrests	Complaints	Arrests	Complaints	Arrests
Central	01.00	94	28	104	55	118	33	131	37	109	44	114	52	85	48
Northwest	02.00	70	25	80	22	81	19	128	27	111	22	104	43	98	38
Boulevard	03.00	57	25	75	14	53	23	103	21	88	28	87	24	97	28
	04.00	60	16	44	19	45	9	100	16	72	24	79	28	85	43
	05.00	104	58	148	61	111	28	135	62	111	52	134	52	163	65
Price's Run	06.01	50	23	70	23	83	26	89	34	75	30	94	35	52	18
	06.02	115	60	182	67	156	48	164	57	131	50	154	62	167	59
Riverside	07.00	52	20	55	26	53	26	48	24	50	29	52	40	49	17
	08.00	23	7	31	12	31	3	29	10	26	17	40	17	37	15
Eastside	09.00	73	37	91	38	77	20	115	54	85	30	97	45	84	44
	17.00	99	31	103	45	119	40	133	54	89	40	115	55	94	58
	20.00	16	6	27	13	21	7	27	11	23	15	27	16	22	10
Midtown Brandywine	10.00	20	5	12	2	12	2	25	11	12	5	7		8	4
Delaware Avenue	11.00	49	7	39	8	63	7	58	7	45	20	16	7	30	15
	12.00	29	6	28	11	35	9	40	17	30	15	29	13	27	11
Bancroft Parkway	13.00	39	4	22	3	28	4	49	5	24		23	10	27	
Hilltop	14.00	40	19	46	14	48	8	68	19	40	9	43	9	44	14
	15.00	74	28	63	19	75	23	72	24	41	13	52	17	50	14
	22.00	131	53	137	50	117	58	140	63	107	44	144	66	85	33
	23.00	166	71	139	51	166	73	182	49	142	83	131	66	141	51
West Center City	16.00	85	46	121	41	85	43	134	45	114	41	109	51	116	56
	21.00	104	35	79	38	109	40	137	51	89	37	134	47	89	44
Cherry Island	18.00	5	1	4		3		3		2		5	5	4	1
South Wilmington	19.00	104	46	79	32	101	15	89	39	69	39	81	31	96	33
Southwest	24.00	96	22	90	26	91	27	129	34	103	33	80	26	118	48
Browntown/Hedgeville	25.00	71	30	68	23	67	20	80	19	51	23	57	25	46	14
	26.00	128	57	118	36	124	52	162	34	140	55	131	48	129	69
	27.00	57	32	60	16	84	21	71	32	105	46	67	22	73	24
Total		2,011	798	2,115	765	2,156	684	2,641	856	2,084	844	2,206	912	2,116	874
CT 6.02 Not Included		1,896	738	1,933	698	2,000	636	2,477	799	1,953	794	2,052	850	1,949	815

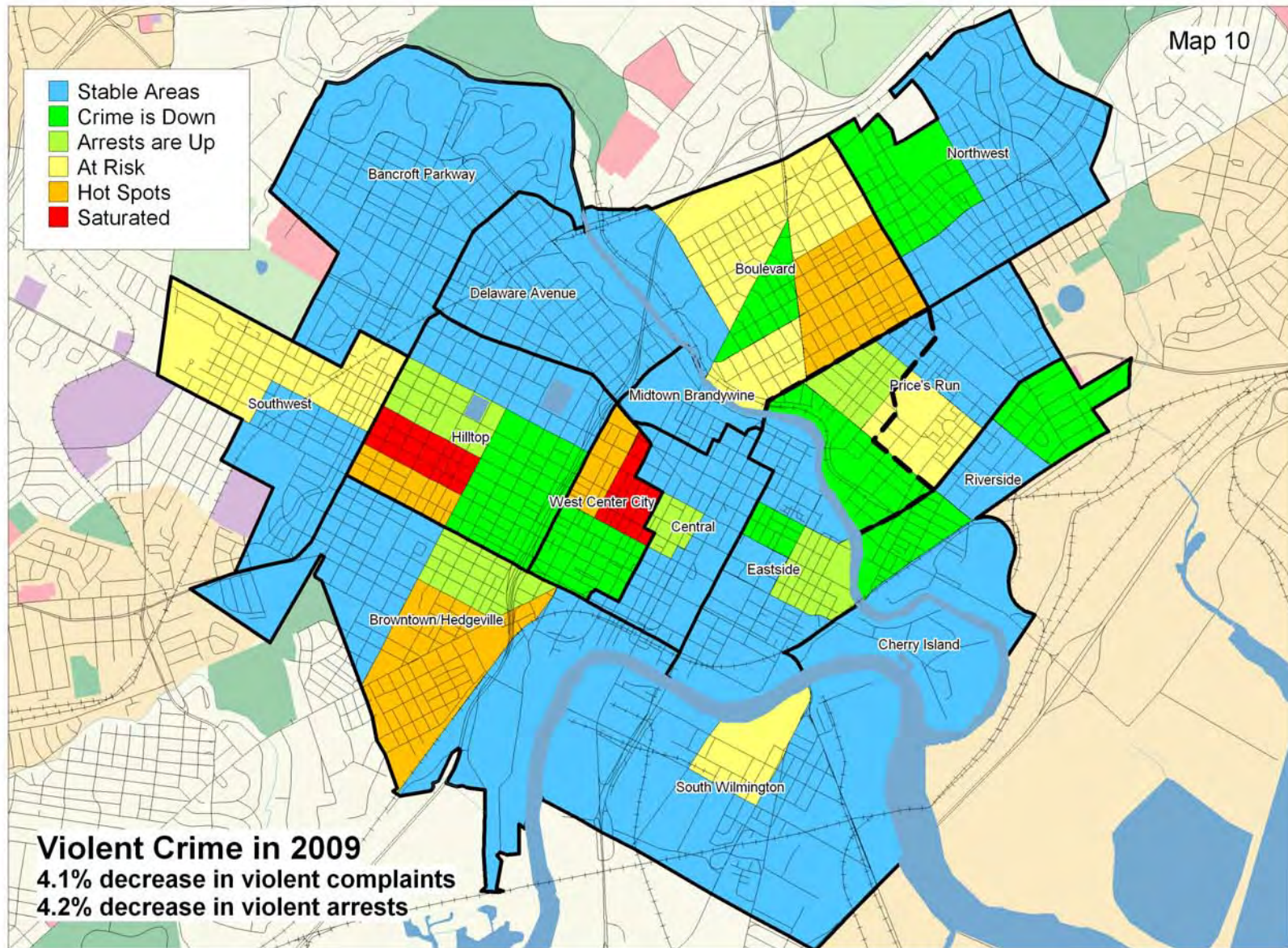












This page is intentionally left blank

Illicit Drug Crime in Wilmington – 2004 to 2009

Table 4 shows all illicit drug complaints and arrests reported in Wilmington between 2004 and 2009. Maps 11 thru 16 show the geographic distribution of reported drug crimes and drug related arrests in Wilmington. Illicit drug crimes encompass all Title 16 misdemeanor and felony drug offenses including illegal possession of narcotic, non-narcotic, and prescription drugs, possession with intent to deliver, delivery or trafficking of illegal drugs, drug possession or delivery within 300 feet of a school or public park, maintaining a dwelling/vehicle/business for the use or sale of illegal drugs, and possession of drug paraphernalia. Unlike arrests for violent crime, the volume of drug complaints for each census tract/grid is typically lower than drug arrests because each complaint can result in more than one arrest.

[2004] 1,245 drug related complaints were reported in Wilmington in 2004, a decrease of 9.3 percent below the 2003 total of 1,372 complaints. Reported drug crime was down in 18 of the city's 28 census tracts in 2004. Neighborhoods that reported a decrease in drug complaints in 2004 include Hilltop, West Center City, Boulevard, Price's Run, Riverside, West Center City, and Browntown/ Hedgeville. Drug related arrests were also down 17.3 percent in 2004, from 1,703 arrests in 2003 to 1,409 in 2004.

Drug complaints in the Price's Run Weed and Seed Area/Census Tract 6.02 were down 11.7 percent in 2004, from 103 complaints in 2003 to 91 complaints in 2004. Illicit drug related arrests in Census Tract 6.02 were also down by 17.5 percent in 2004, from 126 arrests in 2003 to 104 arrests in 2004.

Map 11 shows that illicit drug related complaints and arrests were down in many of Wilmington's most active drug areas in 2004. Drug complaints in Census Tract 6.02 were down in all areas except Grid 0602, located north of E. 26th Street.

[2005] Drug related complaints in Wilmington rose by 8.8 percent in 2005 to 1,354 complaints. 20 of the city's 28 census tracts reported an increase in drug related complaints in 2005. Browntown/Hedgeville, Boulevard, Hilltop, Price's Run, Riverside, and West Center City all reported an increase in drug crime in 2005. Drug related arrests in Wilmington were up 17.6 percent in 2005 to 1,657 arrests. Map 12 shows an increase in the number of "Hot Spots" and "At Risk" areas where drug related complaints and arrests increased compared to the previous year.

Drug related complaints in the Price's Run Weed and Seed Area/Census Tract 6.02 were up 25.3 percent in 2005 to 114 complaints, and drug related arrests were up 35.6 percent to 141 arrests. Map 12 shows that most areas in Census Tract 6.02 reported an increase in drug complaints and arrests in 2005. The exception was Grid 0602 located north of E. 26th Street.

[2006] 1,344 drug related complaints were reported in Wilmington in 2006, 0.7 percent fewer than the 2005 total of 1,354 complaints. 8 of the city's 28 census tracts reported a decrease in drug complaints in 2006. Despite the decrease in drug complaints

in Wilmington overall in 2006, many areas of the city reported an increase in drug complaints. Neighborhoods that reported a decrease in drug complaints in 2006 include Riverside and Eastside. Neighborhoods that reported an increase in drug complaints in 2006 include Hilltop, Boulevard, West Center City, and Browntown/Hedgeville. Drug related arrests in Wilmington were down 9.8 percent in 2006 to 1,495 arrests.

Map 13 shows that drug related complaints and arrests were down in parts of Riverside, West Center City, Hilltop, Eastside, and Price's Run in 2006. Map 13 shows fewer "At Risk" and "Hot Spot" areas and more "Crime is Down" areas compared to 2005.

Drug complaints in the Price's Run Weed and Seed Area/Census Tract 6.02 fell by 12.3 percent in 2006, from 114 complaints in 2005 to 100 complaints in 2006. Drug arrests were also down by 19.9 percent in 2006 in Census Tract 6.02, from 141 arrests in 2005 to 113 arrests in 2006. Map 13 shows that drug related complaints and arrests were down in Grids 0603 and 0605. These two grids combined accounted for 78 percent of all drug complaints and 75.2 percent of all drug related arrests from Census Tract 6.02 in 2006. The remaining grids in Census Tract 6.02, Grids 0602 and 0604, both reported an increase in drug related complaints and arrests in 2006.

[2007] The volume of reported drug complaints in Wilmington dropped for the second consecutive year in 2007 to 1,223 complaints, a decrease of 9 percent below 2006 total of 1,344 complaints. Drug complaints were down in 14 of the city's 28 census tracts in 2007. The city's Boulevard, Eastside, Browntown/Hedgeville, Hilltop, Price's Run, and West Center City neighborhoods all generated fewer drug complaints in 2007 compared to the previous year. Drug related arrests in Wilmington were also down 13.8 percent in 2007 to 1,289 arrests. Map 14 shows fewer "Hot Spots" and an increase in "Crime is Down" and "At Risk" areas compared to 2006.

Drug related complaints and arrests in Census Tract 6.02 were also down by 2 percent and 15.9 percent respectively in 2007. However, despite the decrease in reported drug crime and arrests in Census Tract 6.02 overall, drug related complaints from Grid 0603 increased by 47.8 percent in 2007 to 68 complaints, and arrests increased by 44.4 percent to 65 arrests. Map 14 shows Grid 0603 as the only "Hot Spot" in Price's Run. The remaining grids in Census Tract 6.02 are shown "Crime is Down" or "Arrests are Up".

[2008] Reported drug crime and drug arrests in Wilmington increased in 2008 after two consecutive years of declines in 2006 and 2007. 1,317 drug complaints were reported in Wilmington in 2008, an increase of 7.7 percent above the 2007 total of 1,223. Only 9 of the city's 28 census tracts reported an increase in drug complaints in 2008. Neighborhoods that reported an increase in drug complaints in 2007 include Hilltop, Boulevard, Price's Run, Browntown/Hedgeville, and Riverside. Drug arrests were also up 13.3 percent in 2008 to 1,461 arrests. Map 15 shows an increase in the number of "At Risk" areas in Price's Run, West Center City, Hilltop, and Riverside, and an increase in "Hot Spots" in Boulevard and Riverside.

Drug related complaints in the Price's Run Weed and Seed Area/Census Tract 6.02 were down by 4.1 percent in 2008 to 94 complaints and drug arrests were up 5.3 percent to 100 arrests. Map 15 shows that Grid 0603 was the only grid in Census Tract 6.02 to report a decrease in drug related arrests and complaints in 2008. Drug complaints and arrests in Grid 0603 were down by 2.9 percent and 1.5 percent respectively in 2008. Grids 0602, 0604, and 0605 all reported an increase in drug related complaints and arrests in 2008, and are shown as "At Risk" on Map 15.

[2009] Drug complaints in Wilmington were down 4.6 percent in 2009 to 1,256 complaints. 13 of the city's 28 census tracts reported fewer drug complaints in 2009. Neighborhoods that reported a decrease in drug complaints in 2009 include Hilltop, Riverside, Browntown/Hedgeville, and Eastside. Drug related arrests in Wilmington were also down 3.6 percent in 2008 to 1,408 arrests. Map 16 shows that drug related complaints and arrests were down in Riverside and along Lancaster Avenue between Interstate 95 and Broom Street, while drug related complaints and arrests increased along N. Market Street between Vandever Avenue and 26th Street and in most parts of West Center City.

More drug related complaints were generated from the Price's Run Weed and Seed Area/Census Tract 6.02 in 2009 than any other census tract in Wilmington. 168 drug related complaints were reported from Census Tract 6.02, an increase of 78.7 percent above the 2008 total of 94 complaints. Drug related arrests in Census Tract 6.02 also increased by 89 percent to 189 arrests in 2009.

Most of the increase in drug related complaints and arrests in Census Tract 6.02 was limited to Grid 0603, which alone accounted for 121 drug complaints and 133 drug arrests in 2009. Map 14 shows Grid 0603 as a "Hot Spot" in 2009. Grids 0604 and 0605 reported modest increases in drug related complaints and arrests in 2009, and Grid 0602, located north of 26th Street, generated fewer drug complaints and arrests than the previous year.

Chart 3
**Drug Crime Complaints and Arrests in the Price's Run
 Weed and Seed Area - Census Tract 6.02**

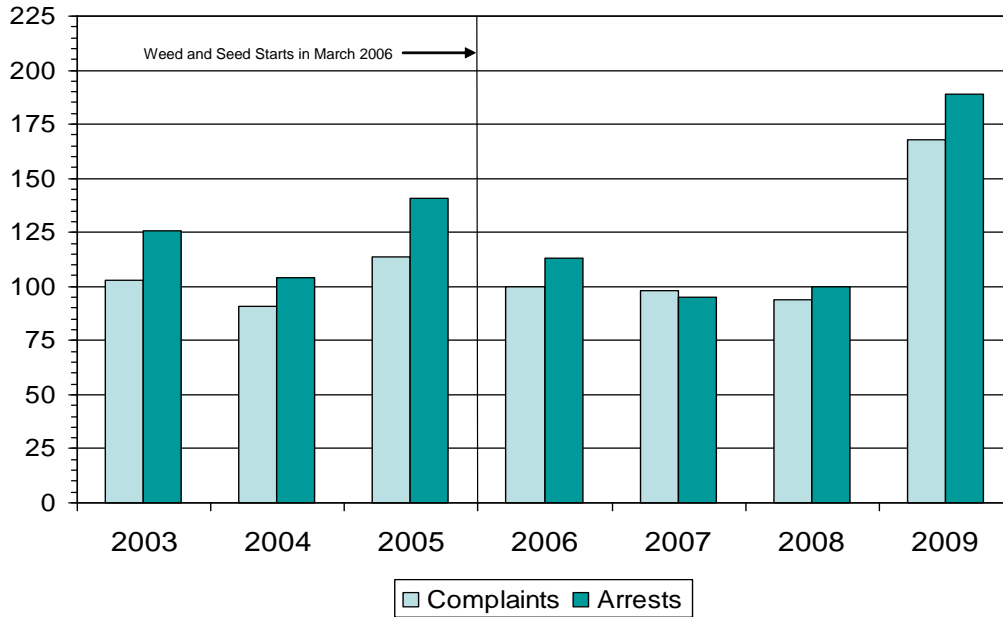


Chart 4
**Drug Crime Complaints and Arrests in Wilmington
 (Census Tract 6.02 Not Included)**

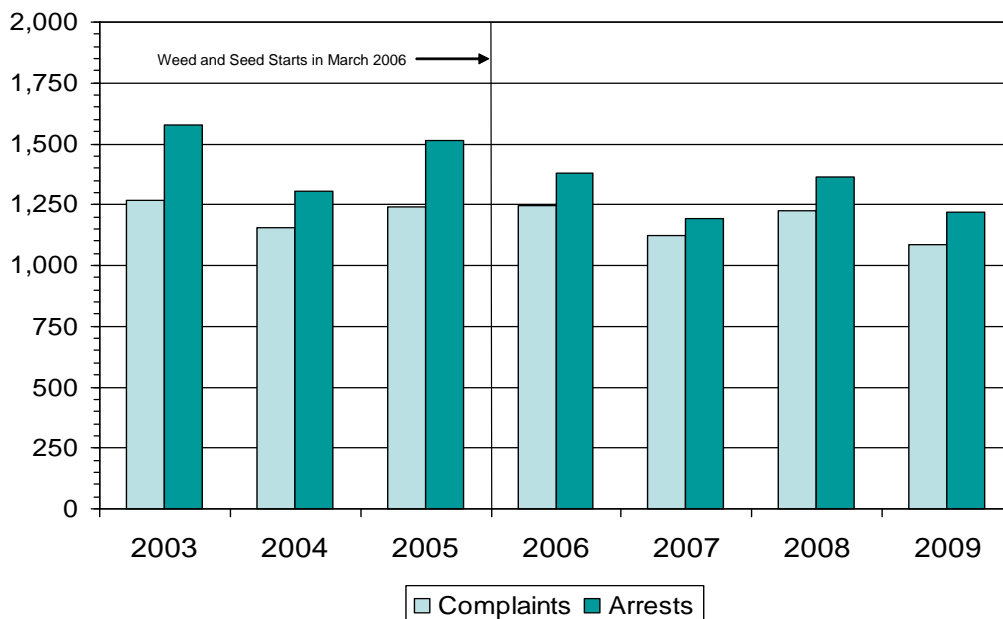
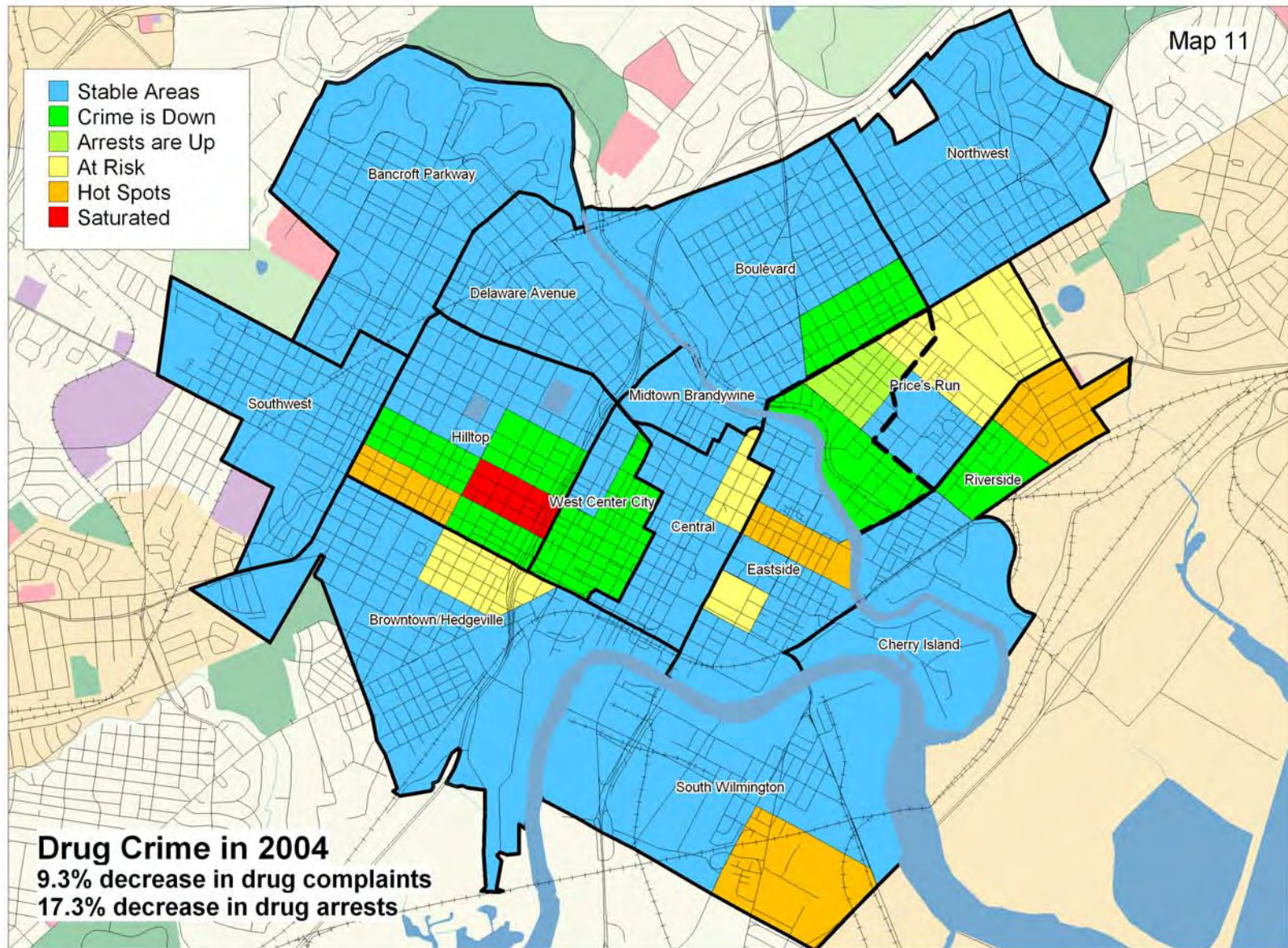
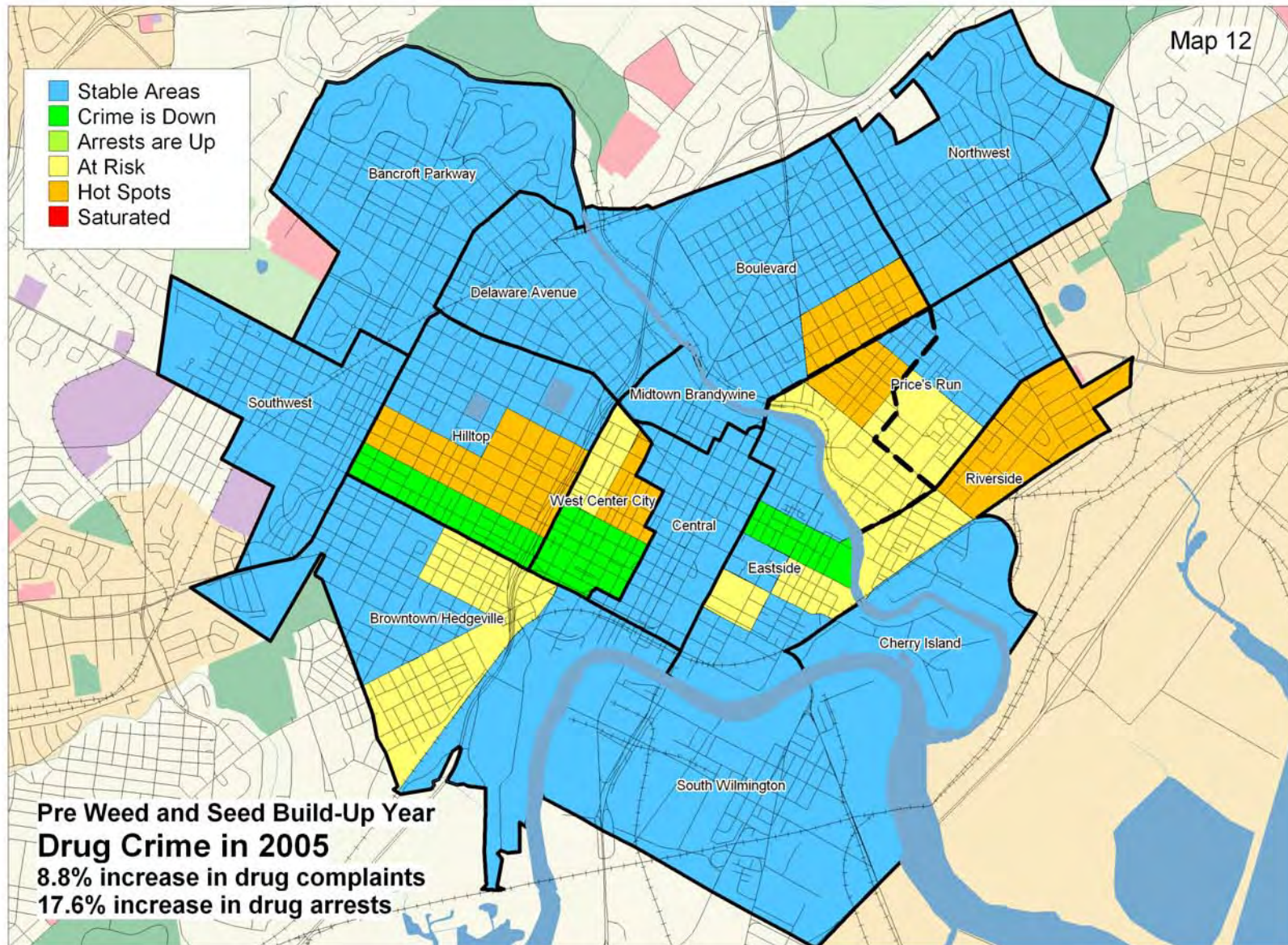
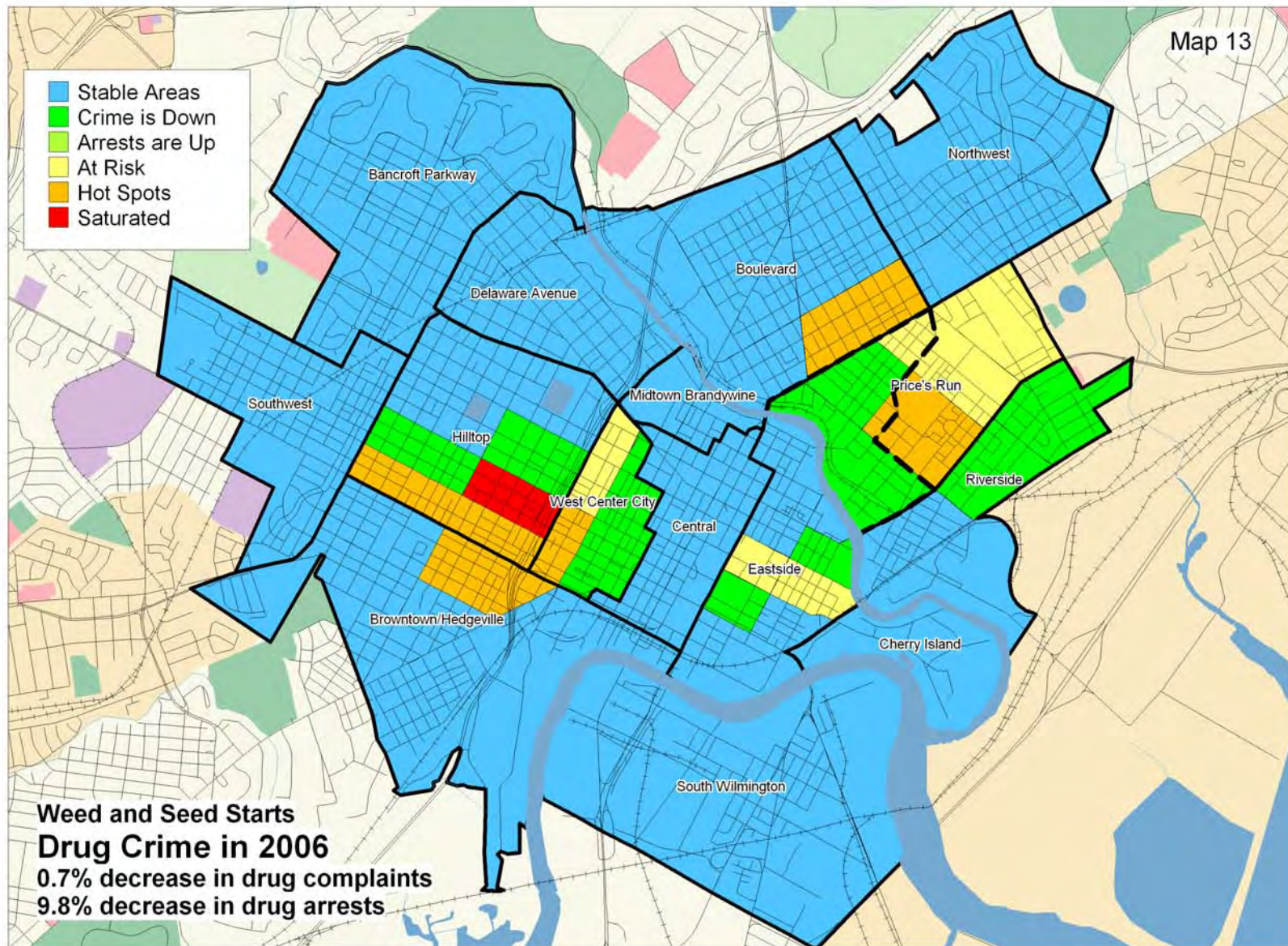


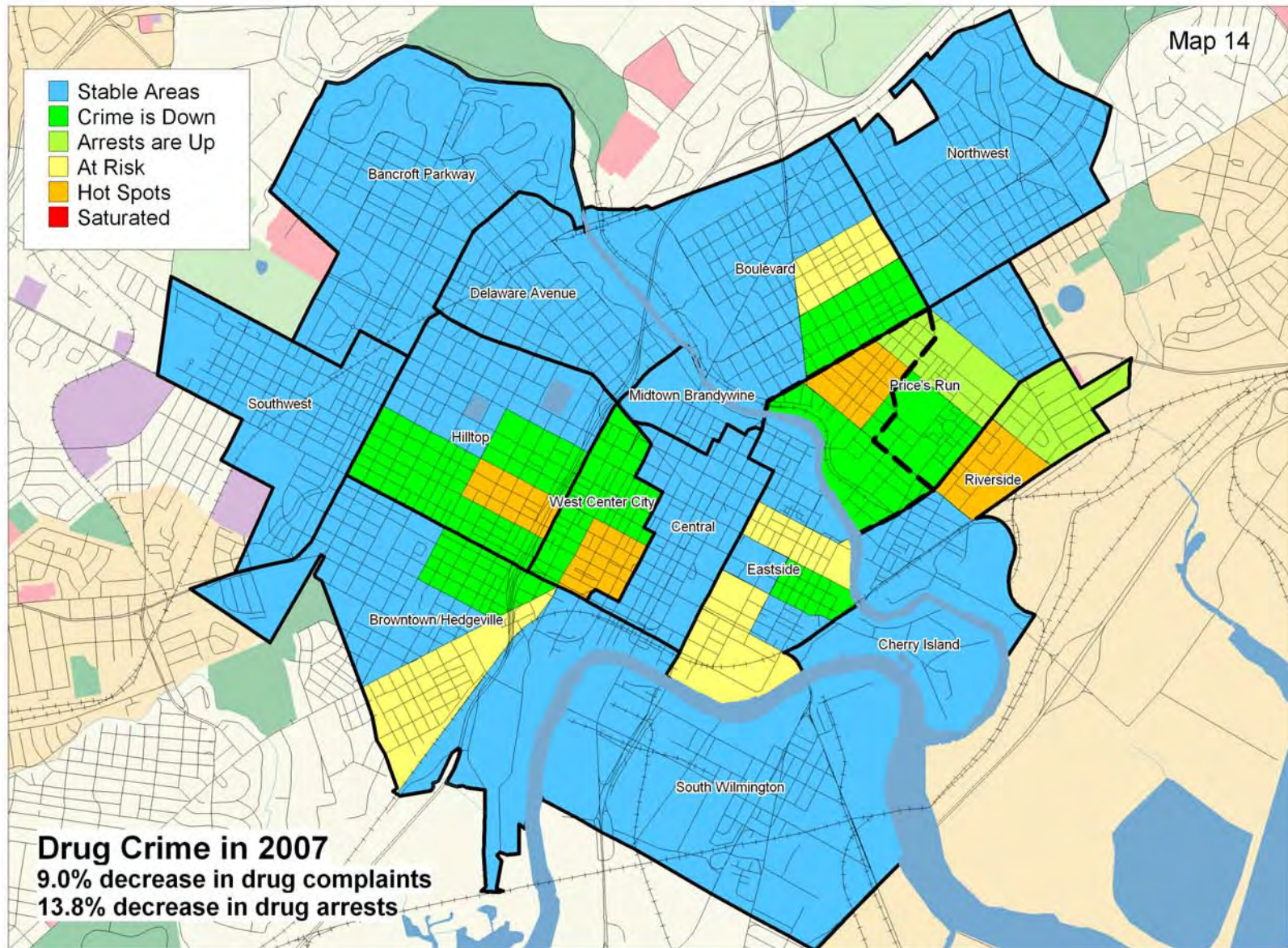
Table 4
Drug Crime Complaints and Arrests by Census Tract

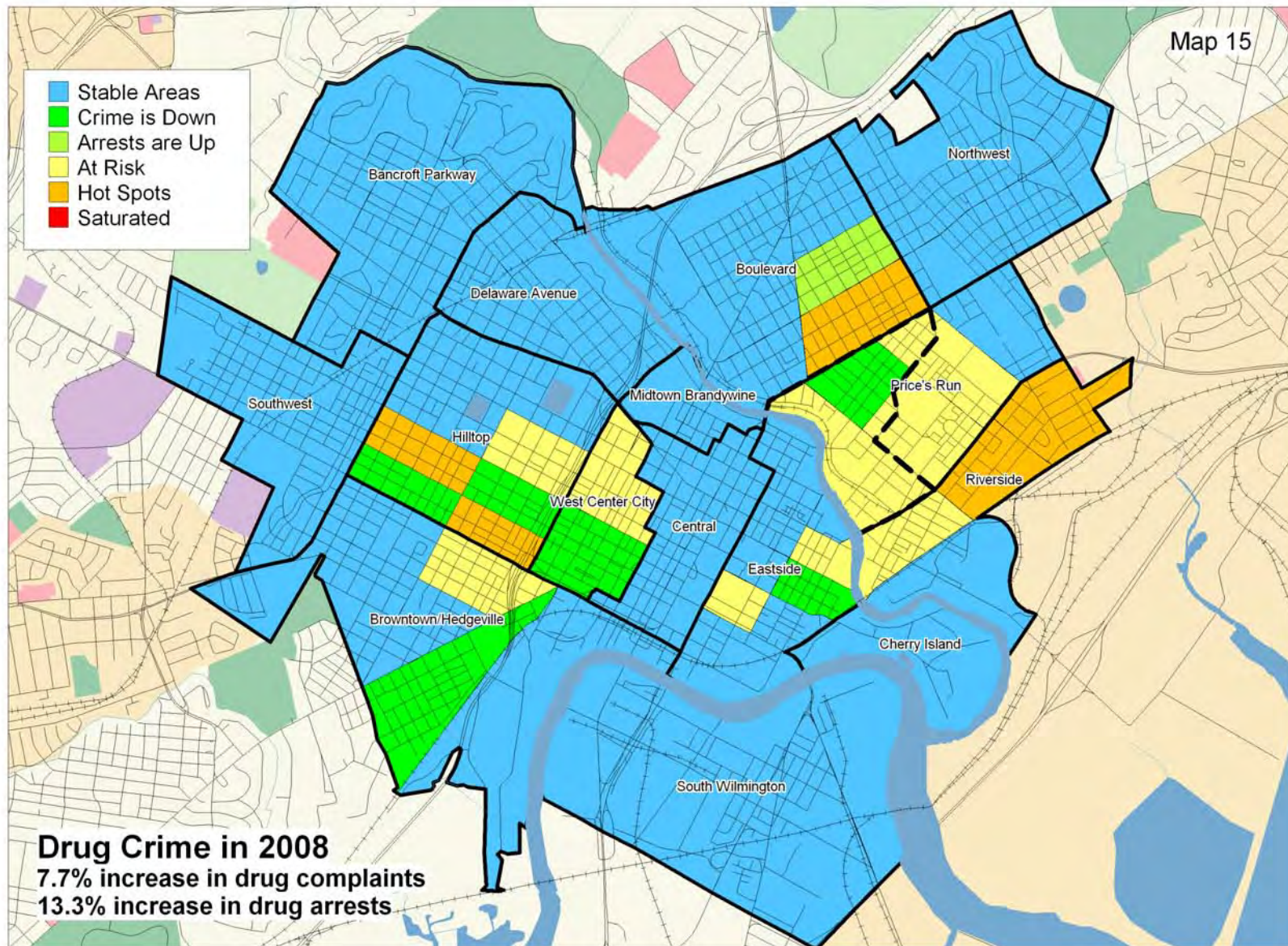
Analysis Area	Census Tract	2003		2004		2005		2006		2007		2008		2009	
		Complaints	Arrests	Complaints	Arrests	Complaints	Arrests	Complaints	Arrests	Complaints	Arrests	Complaints	Arrests	Complaints	Arrests
Central	01.00	48	57	44	46	46	55	49	54	38	39	34	36	41	50
Northwest	02.00	11	13	9	9	21	30	19	21	21	24	17	18	32	32
Boulevard	03.00	20	25	12	15	20	30	21	29	33	30	25	28	39	39
	04.00	12	15	4	6	6	12	13	12	11	7	9	12	16	21
	05.00	69	81	61	64	71	87	76	92	29	36	49	53	83	82
Price's Run	06.01	36	39	46	46	39	48	55	50	39	40	66	57	61	67
	06.02	103	126	91	104	114	141	100	113	98	95	94	100	168	189
Riverside	07.00	160	201	145	173	175	204	79	95	82	100	155	201	83	105
	08.00	26	33	18	19	22	26	15	13	19	21	30	33	7	14
Eastside	09.00	103	130	123	138	73	85	44	53	56	55	53	55	47	58
	17.00	49	56	56	60	79	85	87	95	71	70	71	73	53	50
	20.00	8	11	16	20	10	13	17	15	17	16	13	13	27	30
Midtown Brandywine	10.00	1	1	6	6	2	2	2	5	4		1	1	3	4
Delaware Avenue	11.00	6	9	6	7	11	11	9	8	15	12	5	7	5	3
	12.00	7	14	4	5	4	5	5	4	7	7	4	6	6	4
Bancroft Parkway	13.00	4	5	1	1	2	1	6	4	7	1	5	6	3	2
Hilltop	14.00	12	16	7	9	12	14	18	18	19	16	12	13	8	9
	15.00	42	56	31	37	51	62	38	45	23	25	20	20	25	27
	22.00	174	225	141	164	142	173	177	187	187	208	173	208	125	140
	23.00	145	176	144	164	165	203	175	194	160	177	197	228	150	161
West Center City	16.00	99	111	55	55	83	104	88	81	64	67	75	76	86	102
	21.00	110	132	92	97	84	80	88	99	84	91	63	65	68	80
Cherry Island	18.00			2	4	4	6					3	3	1	1
South Wilmington	19.00	48	66	67	70	29	44	41	54	33	33	28	25	23	25
Southwest	24.00	15	20	16	17	16	22	30	37	26	29	15	14	10	15
Browntown/Hedgeville	25.00	15	22	9	11	12	27	21	31	13	17	16	20	18	22
	26.00	30	39	30	47	37	52	47	41	39	41	63	70	45	49
	27.00	19	24	9	15	24	35	24	45	28	32	21	20	23	27
Total		1,372	1,703	1,245	1,409	1,354	1,657	1,344	1,495	1,223	1,289	1,317	1,461	1,256	1,408
CT 6.02 Not Included		1,269	1,577	1,154	1,305	1,240	1,516	1,244	1,382	1,125	1,194	1,223	1,361	1,088	1,219

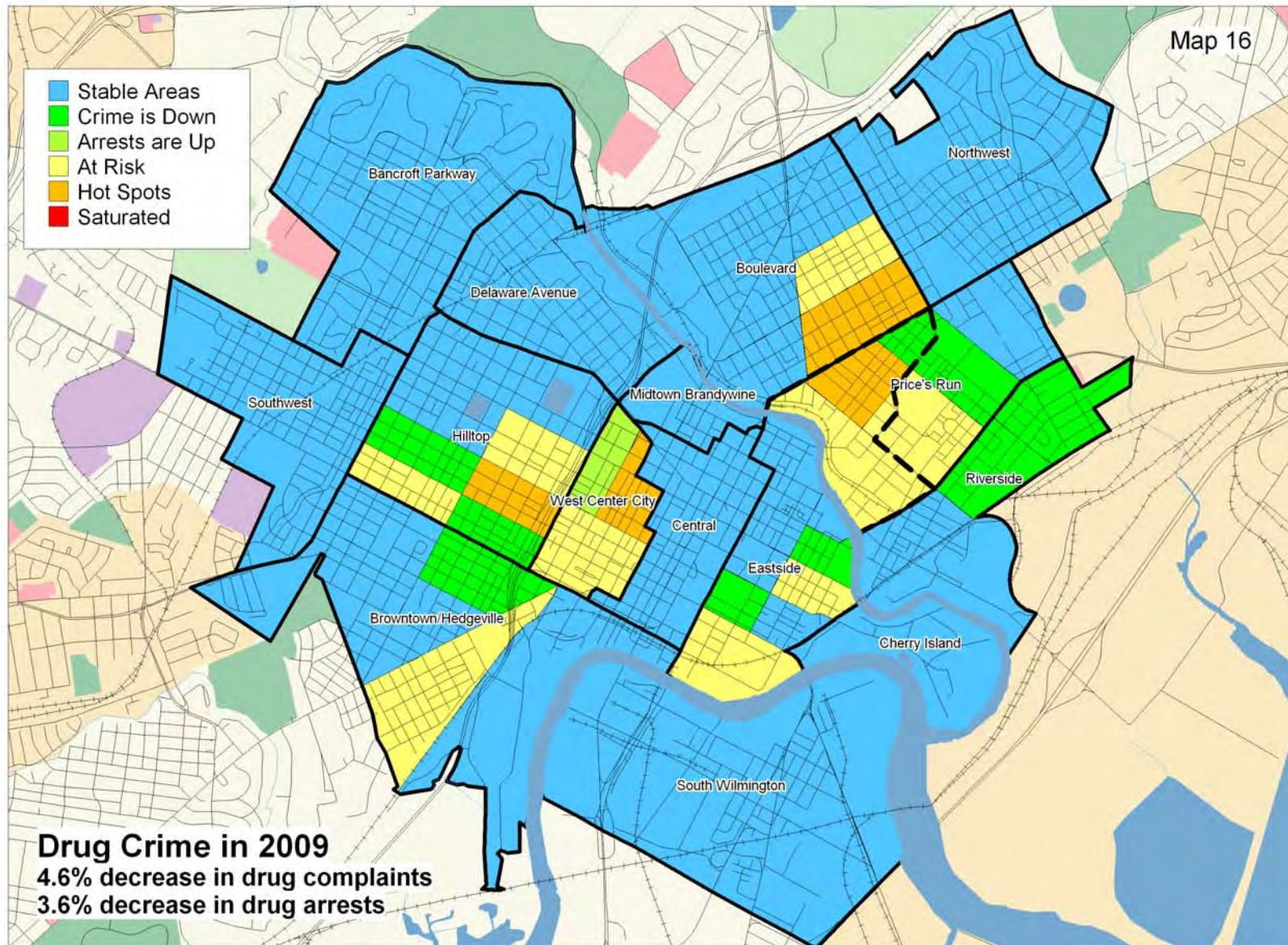












This page is intentionally left blank

Convictions and Sentencings for Weed and Seed Offenders

The following analysis examines the conviction and sentencing outcomes for offenders arrested for Title 11 violent crimes and Title 16 drug crimes in the Prices Run Weed and Seed area in 2008. Violent crimes include homicide, aggravated assault, burglary, robbery and weapons offenses. Drug crimes include all Title 16 drug offenses.

Wilmington police arrested 157 persons for violent and drug related crimes in the Price's Run Weed and Seed area in 2008. 57 persons were charged with a violent crime, 95 were charged with a drug crime, and 5 were charged with both a violent crime and a drug crime. Table 4 shows the distribution of drug and violent crime arrests by gender and age group. The 5 arrests that included both violent and drug charges are included in the "Violent Crime Offenders" section, bringing the total to 62. The "Drug Offenders" section total of 95 offenders is 5 offenders less than the overall drug arrests total of 100 (shown previously in Table 3) because the 5 drug offenders were also charged with a violent crime.

Eighty-one (51.6 percent) of the 157 Weed and Seed violent crime and drug offenders were convicted of a crime, and 42 (26.8 percent) were sentenced to Level V. Twenty (12.7 percent) of the 157 Weed and Seed arrestees were sentenced to Time Served, 10 (6.4 percent) were sentenced to Level V Jail (1 year or less), and 12 (7.6 percent) were sentenced to Level V Prison (more than 1 year).

123 adult males were arrested for violent and drug related crime in Census Tract 6.02 in 2008. Adult males accounted for 78.3 percent of 157 Weed and Seed violent crime and drug offenders. 39.8 percent of the 123 adult male offenders were arrested for violent crimes and 60.2 percent were arrested for drug related crimes.

The conviction rate for the 123 adult male offenders was 53.7 percent overall, higher than comparable conviction rates for juvenile male offenders and adult female offenders. The adult male conviction rate was even higher for drug cases (62.2 percent), but for violent crime cases, the adult male conviction rate of 40.8 percent was lower than comparable conviction rates for juvenile males but higher than the conviction rates for adult and juvenile females.

27.6 percent of the 123 adult male offenders were sentenced to Level V with 13 percent sentenced to Time Served, 5.7 percent sentenced to Level V Jail, and 8.9 percent sentenced to Level V Prison. Adult male drug offenders were sentenced to Level V Prison at a higher rate than violent crime offenders (12.2 percent vs. 4.1 percent).

Eighteen (11.5 percent) of the 157 violent crime and drug offenders arrested in Census Tract 6.02 in 2008 were juvenile males. 33.3 percent of juvenile male Weed and Seed offenders were arrested for violent crime, and 66.7 percent were arrested for a drug related crime.

The conviction rate for juvenile male offenders was 44.4 percent, lower than the comparable conviction rates for adult male or female offenders but higher than the rate for juvenile female offenders. 66.7 percent of juvenile male violent crime offenders were convicted, higher than comparable conviction rates for adult male offenders and all female violent crime offenders. The 33.3 percent conviction rate for juvenile male drug offenders is lower than comparable rates for adult male and adult female drug offenders.

22.2 percent of juvenile male offenders were sentenced to juvenile Level IV or Level V, with 5.6 percent sentenced to Time Served and 16.7 percent sentenced to juvenile Level IV or Level V. Juvenile male violent crime offenders and drug offenders were both sentenced to juvenile Level IV or Level V at the rate of 16.7 percent. None of the juvenile sentences exceeded one year.

Thirteen adult females were arrested for a violent or drug crime in Census Tract 6.02 in 2008. Adult females accounted for 8.3 percent of the 157 violent crime and drug offenders arrested in Census Tract 6.02 in 2008. 30.8 percent adult female offenders were arrested for a violent crime and 69.2 percent were arrested for a drug crime.

44.4 percent of adult female offenders were convicted, a lower comparable conviction rate than adult or juvenile male offenders. 25 percent of adult female violent crime offenders were convicted, a lower comparable conviction rate than adult male, juvenile male, or juvenile female violent crime offenders. The 55.6 percent conviction rate for adult female drug offenders is higher than the comparable rate for juvenile male drug offenders but less than the rate for adult male drug offenders.

30.8 percent of adult female offenders were sentenced to Level V, with 23.1 percent sentenced to Time Served and 7.7 percent sentenced to Level V Prison. 3 of the 4 adult female Weed and Seed offenders that received a Level V sentence were arrested for a drug crime.

Three juvenile female offenders were arrested in Census Tract 6.02 in 2008. All 3 offenders were arrested for violent crime, 1 was convicted and received a probation sentence.

Table 5
Conviction and Sentencing Outcomes for Violent Crime and Drug Offenders Arrested in the Price's Run Weed and Seed Area in 2008

Arrest Type	Gender	Age Group	Arrested		Convicted		Sentenced to Level V		Time Served		Level V Jail		Level V Prison	
			Num	Pct	Num	Pct	Num	Pct	Num	Pct	Num	Pct	Num	Pct
Violent Crime Offenders	Male	Adult*	49	100.0%	20	40.8%	13	26.5%	7	14.3%	4	8.2%	2	4.1%
		Juvenile	6	100.0%	4	66.7%	2	33.3%	1	16.7%	1	16.7%	0	0.0%
	Female	Adult	4	100.0%	1	25.0%	1	25.0%	1	25.0%	0	0.0%	0	0.0%
		Juvenile	3	100.0%	1	33.3%	0	0.0%	0	0.0%	0	0.0%	0	0.0%
Offenders Arrested and Charged With a Violent Crime			62	100.0%	26	41.9%	16	25.8%	9	14.5%	5	8.1%	2	3.2%
Drug Offenders	Male	Adult	74	100.0%	46	62.2%	21	28.4%	9	12.2%	3	4.1%	9	12.2%
		Juvenile	12	100.0%	4	33.3%	2	16.7%	0	0.0%	2	16.7%	0	0.0%
	Female	Adult	9	100.0%	5	55.6%	3	33.3%	2	22.2%	0	0.0%	1	11.1%
		Juvenile	0	-	0	-	0	-	0	-	0	-	0	-
Offenders Arrested and Charged With a Drug Crime			95	100.0%	55	57.9%	26	27.4%	11	11.6%	5	5.3%	10	10.5%
Violent Offenders + Drug Offenders	Male	Adult	123	100.0%	66	53.7%	34	27.6%	16	13.0%	7	5.7%	11	8.9%
		Juvenile	18	100.0%	8	44.4%	4	22.2%	1	5.6%	3	16.7%	0	0.0%
	Female	Adult	13	100.0%	6	46.2%	4	30.8%	3	23.1%	0	0.0%	1	7.7%
		Juvenile	3	100.0%	1	33.3%	0	0.0%	0	0.0%	0	0.0%	0	0.0%
Grand Total			157	100.0%	81	51.6%	42	26.8%	20	12.7%	10	6.4%	12	7.6%

*5 of the 49 adult male violent crime offenders were also charged with a drug crime

This page is intentionally left blank

Delaware SAC Publications on Crime in Wilmington, Delaware.

Eastside Substance Abuse Awareness Program Evaluation First Interim Report, September 1991.

Eastside Substance Abuse Awareness Program Evaluation, January 1993.

A Qualitative Assessment of the Implementation of Community Policing on the Eastside, November 1993.

City of Wilmington Weed and Seed Program Evaluation First Interim Report, June 1993.

City of Wilmington Weed and Seed Program Evaluation – 18 Month Report, June 1994.

Evaluation of the Wilmington Weed and Seed Program - 30 Month Report, August 1995.

Wilmington Shootings 1996: A Comparative Study of Victims and Offenders in Wilmington, Delaware, March 1997.

Evaluation of the Wilmington Weed & Seed Program – January to December 1995, April 1997.

City of Wilmington Operation Weed & Seed 1992 to 1996: An Evaluation, March 1998.

The Impact of Operation Safe Streets on Shootings in Wilmington, November 1998.

Evaluation of Operation Weed & Seed in Wilmington, Delaware, September 1999.

Of the Community, By the Community, and For the Community – Interviews with Selected Partners of the Weed and Seed Initiative, October 2000.

Evaluation of Operation Weed & Seed in Wilmington, Delaware, July 2001.

Operation Safe Streets/Governor's Task Force: Review and Impact, December 2004.

Evaluation of Operation Weed and Seed in Wilmington, Delaware – 2001 to 2004, August 2005

Substate Estimates from the 2006-2008 National Survey on Drug use and Health, U.S. Department of Health and Human Services, July 2010

This page is intentionally left blank

Appendices

Table 6
Violent Crime Complaints and Arrests by Neighborhood, Census Tract and Grid (Page 1 of 2)

Analysis Area	Census Tract	Grid	2003		2004		2005		2006		2007		2008		2009	
			Complaints	Arrests	Complaints	Arrests	Complaints	Arrests	Complaints	Arrests	Complaints	Arrests	Complaints	Arrests	Complaints	Arrests
Central	01.00	0101	26	7	29	26	23	9	33	11	16	13	27	15	17	8
		0102	10	1	18	10	12	5	13	3	22	8	10	8	14	7
		0103	27	9	30	9	41	14	42	9	27	10	41	17	28	24
		0104	5	1	4	1	8	2	2		14	3	4	1	4	1
		0105	11	2	10	2	21	2	25	11	15	4	19	10	14	7
		0106	15	8	13	7	13	1	16	3	15	6	13	1	8	1
Northwest	02.00	0201			9	2	11		8		5		8	2	8	1
		0202	2		2		2		3	1	2		1		2	
		0203	6	9	8	2	10	3	11	6	14	5	8	2	11	12
		0204	17	7	18	6	8	3	10	4	15	5	16	9	23	4
		0205	35	8	33	12	33	11	54	8	53	5	47	24	39	14
		0206	10	1	10		17	2	42	8	22	7	24	6	15	7
Boulevard	03.00	0301	24	9	23	5	9	5	33	7	32	6	30	3	31	7
		0302	33	16	52	9	44	18	70	14	56	22	57	21	66	21
	04.00	0401	27	7	16	8	20	4	39	4	31	10	31	7	42	18
		0402	32	9	24	11	23	5	58	12	40	12	46	19	37	16
		0403			4		2		3		1	2	2	2	6	9
		0404	1													
05.00	0501	26	11	41	14	23	5	45	11	32	13	30	10	46	22	
	0502	78	47	107	47	88	23	90	51	79	39	104	42	117	43	
Price's Run	06.01 + 06.02	0601	26	16	27	10	40	8	26	11	26	13	33	18	18	2
		0602	27	9	44	16	30	10	50	18	40	13	35	16	23	8
		0603	50	39	109	39	72	22	91	27	73	23	103	30	102	33
		0604	22	9	41	13	42	12	44	16	36	14	33	16	39	16
		0605	40	10	31	12	55	22	42	19	31	17	44	17	37	18
Riverside	07.00	0701	32	12	22	16	28	13	28	13	20	13	28	17	26	8
		0702	20	8	33	10	25	13	20	11	30	16	24	23	23	9
	08.00	0801	23	6	28	9	26	2	29	10	24	17	38	14	30	12
		0802		1	3	3	5	1			2		2	3	7	3
Eastside	09.00	0901	17	7	22	6	19	3	31	7	23	9	20	8	22	14
		0902	1		3				3		2	1	6	4	1	
		0903	25	13	34	19	20	4	39	22	27	10	31	17	28	8
		0904	30	17	32	13	38	13	42	25	33	10	40	16	33	22
	17.00	1701	20	7	21	3	22	13	16	8	17	4	25	17	17	11
		1702	35	12	34	14	43	12	66	18	35	14	47	17	36	29
		1703	23	5	34	20	32	12	30	20	22	14	28	15	19	9
		1704	21	7	14	8	22	3	21	8	15	8	15	6	22	9
20.00	2001	16	6	27	13	21	7	27	11	23	15	27	16	22	10	
Midtown Brandywine	10.00	1001	15	5	1	1	5	2	6	3	2	2	3		2	1
		1002	5		11	1	7		19	8	10	3	4		6	3
Delaware Avenue	11.00	1101	1				1	1	4		4	2	1	1	1	
		1102	21	1	18	4	25	1	22	3	15	3	5	1	9	4
		1103	27	6	21	4	37	5	32	4	26	15	10	5	20	11
	12.00	1201	7	2	9	2	16	3	19	10	11	4	13	6	13	3
		1202	22	4	19	9	19	6	21	7	19	11	16	7	14	8

Table 6
Violent Crime Complaints and Arrests by Neighborhood, Census Tract and Grid (Page 2 of 2)

Analysis Area	Census Tract	Grid	2003		2004		2005		2006		2007		2008		2009	
			Complaints	Arrests	Complaints	Arrests	Complaints	Arrests	Complaints	Arrests	Complaints	Arrests	Complaints	Arrests	Complaints	Arrests
Bancroft Parkway	13.00	1301	3	1			1		2				2		5	
		1302	1		1		5		3		2		3	3		
		1303	3		1	1	2		6				7	3	2	
		1304	8		2		3		10		4		1		3	
		1305	6	1	4	1	5		14	3	6		5	2	9	
		1306	18	2	14	1	12	4	14	2	12		5	2	8	
Hilltop	14.00	1401	19	10	12		18	2	24	9	12	2	11	2	17	4
		1402	21	9	34	14	30	6	44	10	28	7	32	7	27	10
	15.00	1501	24	7	17	3	28	4	19	3	11	4	14	2	17	4
		1502	50	21	46	16	47	19	53	21	30	9	38	15	33	10
	22.00	2201	64	23	71	32	63	34	80	37	54	25	68	27	46	22
		2202	67	30	66	18	54	24	60	26	53	19	76	39	39	11
	23.00	2301	103	43	88	40	102	38	123	34	94	46	79	38	85	30
		2302	63	28	51	11	64	35	59	15	48	37	52	28	56	21
West Center City	16.00	1601	42	22	53	19	38	17	64	19	59	23	44	17	50	29
		1602	43	24	68	22	47	26	70	26	55	18	65	34	66	27
	21.00	2101	41	13	43	21	53	19	64	28	41	15	56	20	39	19
		2102	63	22	36	17	56	21	73	23	48	22	78	27	50	25
Cherry Island	18.00	1801	3	1	3				2		2		4	5	3	1
		1802	2		1		3		1				1		1	
South Wilmington	19.00	1901	7	1	6		14		11	2	6	5	9	1	8	4
		1902	7	2	8	1	12		1	2	1	1	2		7	4
		1903	5		3		5		1		4	1	1	1	2	1
		1904	2				3						3	2		1
		1905	12	8	10	5	19	4	33	22	26	11	25	13	37	9
		1906	21	8	10	3	13	6	9	2	9	7	10	7	6	5
		1907		1	2		2	1	5				2		5	
		1908	22	12	16	15	16	1	11	7	21	12	16	3	24	7
		1909	28	14	24	8	17	3	18	4	2	2	13	4	7	2
Southwest	24.00	2401	12	5	13	5	16	8	9	7	12	6	8		15	6
		2402	23	3	19	3	25	5	27	3	27	9	16	6	26	9
		2403	29	12	33	12	37	12	49	6	38	12	34	11	43	23
		2404	23	1	12	2	5	2	20	10	14	5	10	5	15	4
		2405	9	1	13	4	8		24	8	12	1	12	4	19	6
Browntown/Hedgeville	25.00	2501	24	15	20	8	16	10	21	7	20	10	23	10	13	3
		2502	26	8	19	7	16	2	23	6	15	5	11	4	14	4
		2503	12	3	19	5	18	3	22	6	7	3	11	3	12	5
		2504	9	4	10	3	17	5	14		9	5	12	8	7	2
	26.00	2601	82	37	80	22	79	32	103	19	88	40	84	34	79	43
		2602	46	20	38	14	45	20	59	15	52	15	47	14	50	26
	27.00	2701	44	25	49	15	57	18	53	29	91	42	53	21	65	18
		2702	13	7	11	1	27	3	18	3	14	4	14	1	8	6

Table 7
Drug Crime Complaints and Arrests by Neighborhood, Census Tract, and Grid (Page 1 of 2)

Analysis Area	Census Tract	Grid	2003		2004		2005		2006		2007		2008		2009	
			Complaints	Arrests	Complaints	Arrests	Complaints	Arrests	Complaints	Arrests	Complaints	Arrests	Complaints	Arrests	Complaints	Arrests
Central	01.00	0101	7	8	6	8	8	9	14	14	5	6	10	8	7	10
		0102	6	9	20	18	16	16	11	15	5	6	6	6	7	5
		0103	13	14	7	8	9	14	8	10	13	14	7	6	10	16
		0104	4	4	2	1	2	3	3	2	4	4	3	6	2	2
		0105	6	8	4	3	5	7	8	9	3	2	4	5	10	14
		0106	12	14	5	8	6	6	5	4	8	7	4	5	5	3
Northwest	02.00	0201					1				1	2	1		2	
		0202	2	1					1	1					2	
		0203			1	1					2	2	1	2	2	4
		0204			2	3	4	5	6	6	1	1	3	3	1	3
		0205	6	8	4	4	10	15	7	9	12	15	5	7	15	13
		0206	3	4	2	1	6	10	5	5	5	4	7	6	12	12
Boulevard	03:00	0301	3	3	1	3	3	5	4	6	9	8	4	4	5	4
		0302	17	22	11	12	17	25	17	23	24	22	21	24	34	35
	04:00	0401	4	5	2	3	4	10	6	3	2	1	2	3	3	3
		0402	8	10	1	2	2	2	7	9	9	6	7	8	13	18
		0403			1	1								1		
		0404														
	05:00	0501	10	10	9	8	8	6	9	9	5	6	5	5	16	18
		0502	59	71	52	56	63	81	67	83	24	30	44	48	67	64
Price's Run	06.01 + 06.02	0601	11	12	20	12	12	17	22	25	11	5	13	8	16	12
		0602	17	22	22	25	12	14	19	17	17	20	29	37	18	21
		0603	57	66	54	67	71	87	46	45	68	65	66	64	121	133
		0604	25	27	16	23	25	31	36	36	23	27	31	30	48	59
		0605	29	38	25	23	33	40	32	40	18	18	21	18	26	31
Riverside	07.00	0701	56	71	71	74	98	101	39	43	39	51	76	99	42	56
		0702	104	130	74	99	77	103	40	52	43	49	79	102	41	49
	08.00	0801	21	28	15	14	19	24	12	9	16	16	24	28	5	11
		0802	5	5	3	5	3	2	3	4	3	5	6	5	2	3
Eastside	09.00	0901	7	11	10	14	11	12	10	14	7	8	8	9	10	19
		0902					1		2		2	3				
		0903	38	48	47	48	31	40	10	14	21	23	13	13	10	9
		0904	58	71	66	76	30	33	22	25	26	21	32	33	27	30
	17.00	1701	15	20	6	9	15	16	23	20	11	7	17	16	9	9
		1702	17	20	14	14	28	28	31	31	23	26	19	20	19	18
		1703	7	7	25	25	30	34	23	30	25	25	30	31	18	16
		1704	10	9	11	12	6	7	10	14	12	12	5	6	7	7
	20.00	2001	8	11	16	20	10	13	17	15	17	16	13	13	27	30
Midtown Brandywine	10.00	1001	1	1	3	1	1	1	1		1				2	3
		1002			3	5	1	1	2	5	3		1	1	1	1
Delaware Avenue	11.00	1101			1	1					1	1		1		1
		1102			4	4	2	3	1	1	2		3	2	1	
		1103	6	9	1	2	9	8	8	7	12	11	2	4	4	2
	12.00	1201	4	11	1	1			1	1	2	3	1	1	1	2
		1202	3	3	3	4	4	5	4	3	5	4	3	5	5	2

Table 7
Drug Crime Complaints and Arrests by Neighborhood, Census Tract, and Grid (Page 2 of 2)

Analysis Area	Census Tract	Grid	2003		2004		2005		2006		2007		2008		2009	
			Complaints	Arrests	Complaints	Arrests	Complaints	Arrests	Complaints	Arrests	Complaints	Arrests	Complaints	Arrests	Complaints	Arrests
Bancroft Parkway	13.00	1301	1	1							1	1				
		1302														
		1303	1	1					1				1	1		
		1304			1		1		1		1					
		1305	1	1					1	1			3	4	1	1
Hilltop	14.00	1401	1	3			5	6	4	7	7	6			2	2
		1402	11	13	7	9	7	8	14	11	12	10	12	13	6	7
	15.00	1501	6	9	3	4	5	4	5	9	2	2	4	5	5	5
		1502	36	47	28	33	46	58	33	36	21	23	16	15	20	22
	22.00	2201	82	96	86	94	94	116	110	115	122	141	96	110	96	108
		2202	92	129	55	70	48	57	67	72	65	67	77	98	29	32
	23.00	2301	92	108	81	90	129	156	124	131	112	121	151	173	101	105
		2302	53	68	63	74	36	47	51	63	48	56	46	55	49	56
	16.00	1601	28	32	11	11	17	22	30	25	22	23	25	27	19	29
		1602	71	79	44	44	66	82	58	56	42	44	50	49	67	73
West Center City	21.00	2101	36	51	29	34	24	28	49	55	32	33	19	19	24	26
		2102	74	81	63	63	60	52	39	44	52	58	44	46	44	54
Cherry Island	18.00	1801			2	4	3	5					3	3	1	1
		1802					1	1								
South Wilmington	19.00	1901	4	5	2	1	2	2	4						3	3
		1902	3	4	2	2	2	2	1	3						
		1903					2	3		4	1	1	1		1	1
		1904			2	2	1	2					1			
		1905	5	5	7	11	4	9	16	18	13	15	15	15	2	3
		1906		3	5	6	7	13	5	7	3	3	1	1		
		1907							1	1			1			
		1908	12	17	6	4	9	9	13	18	15	13	7	7	17	18
Southwest	24.00	2401	4	5	6	7	1	2	6	5	3	2	2	1		
		2402	2	2	5	6	3	3	7	5	4	6	5	7	5	8
		2403	4	5	2	1	6	9	5	8	8	8	5	3	2	4
		2404	4	6	1	1	2	4	6	10	8	7	2	2	1	1
		2405	1	2	2	2	4	4	6	9	3	6	1	1	2	2
Browntown/Hedgeville	25.00	2501	8	10	4	5	6	13	5	4	4	5	2	2	5	6
		2502	4	7	2	4	2	3	6	6	2	3	7	8	8	8
		2503	2	2	2	1	2	6	8	18	6	7	6	9	3	5
		2504	1	3	1	1	2	5	2	3	1	2	1	1	2	3
	26.00	2601	21	30	22	31	27	38	41	36	23	22	47	51	34	33
		2602	9	9	8	16	10	14	6	5	16	19	16	19	11	16
	27.00	2701	14	19	8	14	21	29	17	29	23	28	17	16	20	24
		2702	5	5	1	1	3	6	7	16	5	4	4	4	3	3