

Wilmington Shootings 2008: A Comparative Working Paper (August 2009)

WILMINGTON SHOOTINGS 2008
A COMPARATIVE WORKING PAPER OF
VICTIMS AND SUSPECTS
IN WILMINGTON, DELAWARE

DELAWARE CRIMINAL JUSTICE COUNCIL
AUGUST 2009



PREPARED BY
MICHAEL McLAUGHLIN
AMY REINBOLD

ACKNOWLEDGMENTS

The authors acknowledge the following individuals and agencies that assisted in the development of this report.

The Wilmington Police Department

- Captain James Jubb (576-3642)
Commander, Criminal Investigation Division
- Lawrence Kozicki, Crime Analyst (576-3663)

INTRODUCTION

Since 1996, the Delaware Criminal Justice Council has worked with the Wilmington Police Department on analyzing the shooting incidents in the city. This report continues the effort of the Delaware Criminal Justice Council to collect and present data on the shooting victims and suspects in the City of Wilmington.¹ The 2008 report continues to review the nature of shootings in Wilmington by looking at various demographics of victims and known suspects including criminal history, age, race and sex. This report includes a multi-year shooting chart (Appendix A). It is anticipated that future reports on shootings in Wilmington will include additional multi-year comparison charts along with statistical analysis, trends, and projections.

Although this report focuses on the shootings that occurred in 2008, data will be presented from previous year's shooting reports when appropriate. The reader is referred to previous reports for more detail on shooting victims in Wilmington in previous years. All tables and data discussion is related to 2008 shootings unless otherwise noted.

The following information was collected for completion of this report:

1. Case status
2. Victim / suspect sex
3. Victim / suspect race
4. Victim / suspect age
5. Victim / suspect age at first arrest
6. Victim / suspect criminal history
7. Incident Classification
8. Neighborhood
9. Date and time of incident
10. Area(s) of body shot
11. Firearm type used
12. Victim cooperation

¹ Garrison, A. (2004). **Wilmington Shootings 2002: A Comprehensive Study of Victims and Offenders in Wilmington, Delaware**. Delaware Criminal Justice Council: Wilmington, Delaware. See also, Garrison, A. (2002). **Wilmington Shootings 2001: A Comprehensive Study of Victims and Offenders in Wilmington, Delaware**. Delaware Criminal Justice Council: Wilmington, Delaware.

METHODOLOGY

The data used for this report was obtained from the Wilmington Police Department and Delaware Criminal Justice Information System (DELJIS) criminal history searches on victims and suspects.

The analysis in this study, as with prior reports, is the result of taking information gathered from the crime reports for all of the 2008 complaints that reported a person being shot and placing them in a database. Incident information obtained through Wilmington Police department and DELJIS searches. Criminal history was limited to State of Delaware records. The nature of the data for this report requires some limitations on the analysis of and conclusions about the nature of shootings in Wilmington. Of the 124 shooting incidents, 53.5 % of those did not have an identifiable suspect. 125 suspects were reported by sex and race, and 60 were reported further by age. Of the 60 reported by sex age and race 41 were formally charged in the incident. Analysis of criminal history is grouped into the following categories: misdemeanor, felony, drug, and weapons arrests. Drug arrests include both felony and misdemeanor arrests for Title 16 offenses. Felony and misdemeanor arrests do not include drug arrests.

EXECUTIVE SUMMARY

In 2008, there were 124 shootings incidents in the City of Wilmington resulting in 140 shooting victims and 41 known suspects.² 2008 was a record breaking year for both shootings and homicides.

According to the data reported, there appears to be an increasing trend in the number of known juvenile shooting suspects. In 2004, juveniles accounted for 7.9% of the known suspects. In 2006, 22.8% of known shooting suspects were juveniles.

The ten-year average (excluding 2005 and 2006) for known suspects that were juveniles at the time of the shooting incident is 10.5%. In 2008, 20.0% of known shooting suspects were juveniles. Although 2008 data showed a slight decrease from 2006, it is still significantly higher than the nine year trend.

For the first time this report has looked at age of first contact with the criminal justice system for both suspects and victims. This new information identified 80.6% of shooting victims were juveniles at the time of their first arrest. In addition 89.2% of shooting suspects were juveniles at the time of their first arrest.

Analysis of the shooting victims revealed the following:

- 17.8%, or 25, of the shooting victims (N=140) died as a result of their injuries.
- Males accounted for 91.5% of the shooting victims.
- Black males accounted for 80% of the shooting victims.
- The single largest category by age group of victims (23.5%) were between the ages of 18-21 years old.

In 2007 the single largest category by age group of victims (26%) were between 26-30 years old.

Analysis of the shooting suspects revealed the following

- In the one hundred twenty four shooting incidents where at least one suspect was identified by race and sex, there were a total of 125 suspects.
 - 96.8% of those identified by race and sex were minority males
 - 91.2% of those identified by race and sex were black males.
- Of the 60 suspects identified by age:
 - 20.0% were juveniles between 14 and 17 years old.
 - 48.3% were adults between 18 and 21 years old.
 - 15.0% were adults between 22 and 25 years old.
 - In total, 93.3% of the suspects were less than 26 years old.

In 2008, for the sixth year in a row, there were no known shooting suspects less than 14 years old.

Analysis of the shooting incidents revealed the following:

- Six out of a total of twenty-five homicides occurred in the last three months (October, November, December) of 2008
- The day of the week with the most shooting victims was Sunday.
- 12:00 – 1:00am was the hour of the day with the most victims.

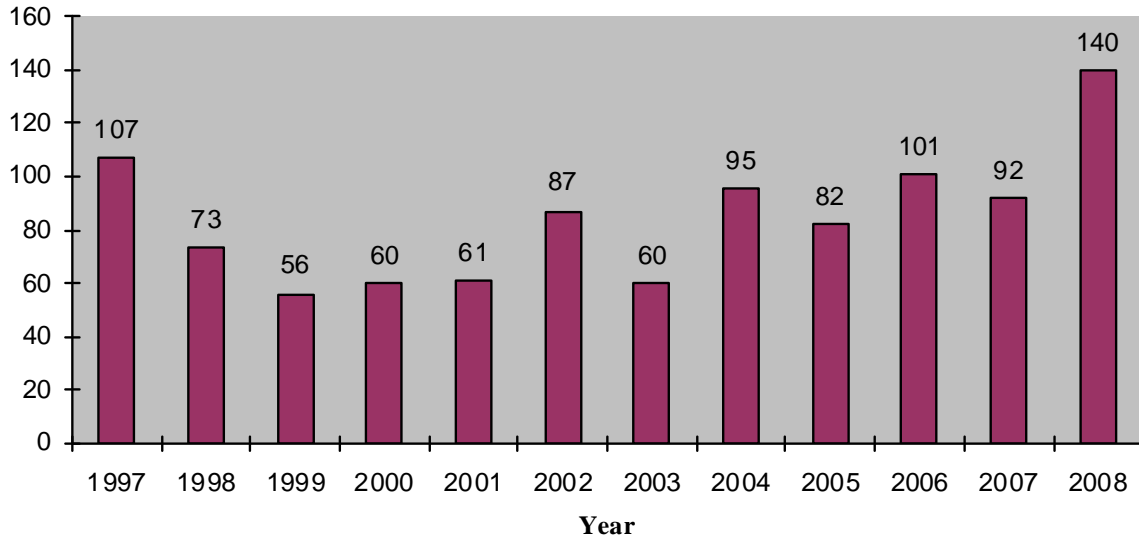
2. Known suspects are defined as suspect that have been formally charge for the incident.

- Of the 115 shooting non-fatal victims, 53.9% were not cooperative in the shooting investigation.

In 2007 31.1% were not cooperative in the shooting investigation.

GENERAL SHOOTING STATISTICS

**Table-One Total Number of Shooting Victims
1997 - 2008**



In 2008, there were 140 total shooting victims of which 25 died as a result of their injuries. 2008 marked the record year for homicides and shootings in the city of Wilmington.

Table Two - Case Status for Shooting Victims: 1997-2008 (Percentage)

Case Status	1997	1998	1999	2000	2001	2002	2003	2006	2007	2008	Average
Arrest	29.9	32.9	39.3	26.7	52.5	33.3	35.0	36.6	29.7	29.9	31.4
Open	59.8	63.0	57.1	61.7	8.2	12.6	1.7	0.0	0.0	0.0	24.0
Pending	0.0	0.0	0.0	1.7	3.3	1.1	0.0	8.9	28.5	33.8	7.0
Suspended	0.0	0.0	3.6	1.7	32.8	47.1	48.3	49.5	40.4	32.3	23.2
Warrant	5.6	4.1	0.0	8.3	1.6	2.3	3.3	3.0	0.0	0.0	9.06
Closed	4.7	0.0	0.0	0.0	1.6	3.4	0.0	2.0	0.0	2.4	1.2
Missing	0.0	0.0	0.0	0.0	0.0	0.0	11.7	0.0	1.4	1.6	1.3
Total	100	100	100	100	100	100	100	100	100	100	

Table Two is a summary of the case status for shooting incidents. It should be noted that there is no data available for 2004 and 2005. The percentage of cases that were cleared by arrest of at least one suspect has remained relatively constant at approximately one-third of all shooting victims. We are not able to make valid multi-year comparisons for

Wilmington Shootings 2008: A Comprehensive Study (Working Paper August 2009)

the Open, Pending, and Suspended categories as there was a change in definitions and counting practices between 2000 and 2001. Final clearance numbers are not available as these reported numbers represent a point in time and investigations are still on going at date of report production.

Table Three - Clearance Rates for Shooting Victims: 1997-2008 (Percentage)												
1997	1998	1999	2000	2001	2002	2003	2004	2005	2006	2007	2009	Average
34.6	32.9	39.3	26.7	54.1	36.8	35.0			38.6	37.3	31.4	37.3

The clearance rate for 2008 was 31.4%. This is a 16% decrease of clearance rate average for prior years for which there is available data.

VICTIM DEMOGRAPHICS

Table Four - Shooting Victims by Sex: 2008		
	Number	Percentage
Male	128	91.4
Female	12	8.6
Total	140	100.0

Table four shows that 91.4% of the shooting victims in 2008 were males and the remaining 8.6.0% were females.

Table Five - Shooting Victims by Race and Sex: 2008		
Victim's Race	Number	Percentage
Black Male	112	80
Black Female	11	7.8
White Male	4	2.9
White Female	0	0.0
Hispanic Male	12	8.6
Hispanic Female	1	.7
Total	140	100.0

In 2008, 97.1% of shooting victims were either Black or Hispanic.

Table Six - Shooting Victims by Age: 2008		
Victim's Age	Number	Percentage
Under 14 years old	0	0.0
14 – 17 years old	13	9.3
18 – 21 years old	33	23.6
22 – 25 years old	22	15.7
26 – 30 years old	30	21.4
31 – 35 years old	15	10.7
36 – 40 years old	13	9.3
41 – 45 years old	6	4.3
46 – 50 years old	5	3.6
Over 50 years old	3	2.1
Total	140	100.0

70 % of all shooting victims were between the ages of eighteen and thirty.

Table Seven - Shooting Victims with Criminal History: 2008		
Criminal History	Number	Percentage
Yes	109	77.9
No	31	22.1
Total	140	100.0

77.8 of the shooting victims in 2008 had previously been arrested for criminal charges.³

Table Eight - Shooting Victims by # of Misdemeanor Arrests: 2008		
Arrests	Number	Percentage
None	31	22.1
One – Two	17	12.2
Three or more	92	65.7
Total	140	100.0

Just under two-thirds of shooting victims (65.7%) had three or more misdemeanor arrests, excluding those that involved weapons or drugs, at the time of the shooting incident.

Table Nine - Shooting Victims by # of Felony Arrests: 2008		
Arrests	Number	Percentage
None	44	31.4
One – Two	39	27.9
Three or more	57	40.7
Total	140	100.0

Over 68% of victims had at least one prior felony arrest at the time of the shooting incident. Over one-third of the shooting victims (40.7%) had three or more felony arrests, excluding those that involved weapons or drugs.

³ Criminal charges include offenses enumerated in Titles 11 and 16 and local ordinances that substantially mirror those parts of the Delaware Code. Motor vehicle charges are not counted.

Table Ten - Shooting Victims by # of Drug Arrests: 2008		
Arrests	Number	Percentage
None	33	23.6
One	16	11.4
Two or more	91	65.0
Total	140	100.0

65 % of shooting victims had previously been arrested for two or more drug related offences.

Table Eleven - Shooting Victims by # of Weapons Arrests: 2008		
Arrests	Number	Percentage
None	88	62.8
One	20	14.3
Two or more	32	22.9
Total	140	100.0

37.2 % of shooting victims had previously been arrested for felony weapons-related charges.

Table Twelve - Shooting Victims by Career Criminal Candidate (CCC) Designation: 2008		
CCC	Number	Percentage
Yes	16	17.4
No	76	82.6
Total	92	100.0

17.4% of the victims in 2008 qualified for designation as Career Criminal Candidates as of the date of the shooting incident. In order to achieve this status, an individual must have a minimum of two convictions for Class A or B felonies as enumerated in Title 11, Sec. 4214(b) or a minimum of three convictions for any class of felony. Each conviction must be incurred as a result of a separate criminal act.

Table Thirteen - Shooting Victims by Drug Dealer Designation: 2008		
	Number	Percentage
Yes	61	43.5
No	79	56.5
Total	140	100.0

43.5% were suspected to be actively involved in the drug trades.

Table Fourteen Shooting Victims by Age of First Contact with Criminal Justice System. : 2008		
Arrests	Number	Percentage
< 13	28	25.6
14-17	60	55.0
18-21	12	11.0
22-25	4	3.7
26-30	3	2.8
31-35	2	1.9
Total	109	100.0

For the first time this report has looked at age of first contact with the criminal justice system for both suspects and victims. This newly discovered information identified 80.6% of shooting victims were juveniles at the time of their first arrest.

SUSPECT DEMOGRAPHICS

	Number	Percentage
Male	121	96.8
Female	4	3.2
Total	125	100.0

Table Fourteen shows that 125 individuals were identified as suspects in shooting incidents. 96.8% of these suspects were identified as being male.

	Number	Percentage
Black Male	113	90.4
Black Female	4	3.2
White Male	0	0.0
White Female	0	0.0
Hispanic Male	8	6.4
Hispanic Female	0.0	0.0
Total	125	100.0

In 2008, 96.8% of shooting suspects were identified as being black or Hispanic males.

The nature of the data for this report requires some limitations on the analysis of and conclusions about the nature of shootings in Wilmington. 125 suspects were reported by sex and race, and 60 were reported by age. Of the 60 identified by sex age and race 41 suspects were formally charged in the incident.

Table Sixteen - Shooting Suspects by Age: 2008		
Suspect's Age	Number	Percentage
Under 14 years old	0	0.0
14 – 17 years old	12	20.0
18 – 21 years old	29	48.3
22 – 25 years old	9	15.0
26 – 30 years old	6	10.0
31 – 35 years old	3	5.0
36 – 40 years old	1	1.7
41 – 45 years old	0	0.0
46 – 50 years old	0	0.0
Over 50 years old	0	0.0
Total	60	100.0

All but one (98.2%) of the identified shooting suspects were thirty five years of age or younger. In 2008, for the fifth year in a row, there were no known shooting suspects less than 14 years old.

Table Seventeen - Shooting Suspects with Criminal History: 2008		
Criminal History	Number	Percentage
Yes	34	91.8
No	3	8.2
Total	37	100.0

Thirty seven suspects have verifiable Delaware criminal history. The remaining four suspects charged in the incidents had no known criminal history in Delaware (out of state charges were not available for this report).

Table Eighteen - Shooting Suspects by # of Misdemeanor Arrests: 2008		
Arrests	Number	Percentage
None	4	10.9
One – Two	3	8.1
Three or more	30	81.0
Total	37	100.0

Over 81 % of shooting suspects had three or more previous misdemeanor charges. Thirty seven suspects have verifiable Delaware criminal history. The remaining four suspects charged in the incidents had no known criminal history in Delaware (out of state charges were not available for this report).

Table Nineteen - Shooting Suspects by # of Felony Arrests: 2008		
Arrests	Number	Percentage
None	3	8.1
One	4	10.9
Two or more	30	81.0
Total	37	100.0

91.9% of suspects have at least one prior felony arrest and 81% have been arrested two or more times for felony charges. Thirty seven suspects have verifiable Delaware criminal history. The remaining four suspects charged in the incidents had no known criminal history in Delaware (out of state charges were not available for this report).

Table Twenty - Shooting Suspects by # of Drug Arrests: 2008		
Arrests	Number	Percentage
None	8	21.6
One	8	21.6
Two or more	21	56.8
Total	37	100.0

Over half of shooting suspects were arrested two or more occasions for drug charges prior to the 2008 shooting incident. Thirty seven suspects have verifiable Delaware criminal history. The remaining four suspects charged in the incidents had no known criminal history in Delaware (out of state charges were not available for this report).

Table Twenty-One - Shooting Suspects by # of Weapons Arrests: 2008		
Arrests	Number	Percentage
None	7	19.0
One	15	40.5
Two or more	15	40.5
Total	37	100.0

81 % of the shooting suspects had prior arrests for weapons. Thirty seven suspects have verifiable Delaware criminal history. The remaining four suspects charged in the incidents had no known criminal history in Delaware (out of state charges were not available for this report).

Table Twenty-Two- Shooting Suspects by Career Criminal Designation: 2008		
Arrests	Number	Percentage
Yes	16	43.2
No	21	56.8
Total	37	100.0

43.2% of the suspects in 2008 qualified for designation as Career Criminal Candidates as of the date of the shooting incident. In order to achieve this status, an individual must have a minimum of two convictions for Class A or B felonies as enumerated in Title 11, Sec. 4214(b) or a minimum of three convictions for any class of felony. Each conviction must be incurred as a result of a separate criminal act.

Thirty seven suspects have verifiable Delaware criminal history. The remaining four suspects charged in the incidents had no known criminal history in Delaware (out of state charges were not available for this report).

Table Twenty-Three - Shooting Suspects by # of Drug Dealer Designation: 2008		
Arrests	Number	Percentage
Yes	29	48.3
Suspected	10	16.7
No	10	16.7
Unknown	11	18.3
Total	60	100.0

48.3% of shooting suspects were previously charged with drug-dealing offenses. 65 % were suspected to be actively involved in the drug trades and/or had prior drug arrest.

Table Fourteen Shooting Suspects by Age of First Contact with Criminal Justice System. : 2008		
Arrests	Number	Percentage
< 13	17	45.9
14-17	16	43.3
18-21	2	5.4
22-25	2	5.4
26-30	0	0.0
31-35	0	0.0
Total	37	100.0

For the first time this report has looked at age of first contact with the criminal justice system for both suspects and victims. This newly discovered information identified 89.2% of shooting suspects were juveniles at the time of their first arrest.

Thirty seven suspects have verifiable Delaware criminal history. The remaining four suspects charged in the incidents had no known criminal history in Delaware (out of state charges were not available for this report).

ANALYSIS OF SHOOTINGS

Quarter	Number	Percentage
1 (January – March)	36	25.7
2 (April – June)	29	20.7
3 (August – September)	41	29.3
4 (October – December)	34	24.3
Total	140	100.0

Just over half of the shooting victims (53.6%) were shot in the second-half of 2008. There were more shooting victims in the 3rd Quarter of 2008 (41) than in any other quarter.

	Number	Percentage
Murder I	25	20.1
Attempted Murder I	5	4.0
Assault I	77	62.0
Assault II	3.0	2.5
Rob 1st	7	5.6
Rob 2nd	6	4.8
Total	124	100.0

The leading crime involved in the majority of shooting incidents (62.0%) was Assault I. There were fatalities in twenty five of the shooting incidents and therefore they were classified as Murder I.

Table Twenty-Six- Incidents by Neighborhood: 2008		
Neighborhood	Number	Percentage
West Side	23	18.5
East Side	14	11.3
Prices Run	22	17.8
Boulevard	23	18.5
Riverside / 11th St. Bridge	3	2.4
Browntown / Hedgeville	11	8.9
West Center City	15	12.1
Midtown Brandywine	0	0.0
South Wilmington	8	6.5
Northwest	3	2.4
Southwest	0	0.0
Central	2	1.6
Cherry Island	0	0.0
Delaware Avenue	0	0.0
Bancroft Parkway	0	0.0
Total	124	100.0

Table Twenty-Five shows the shooting incidents by neighborhood.

Wilmington Shootings 2008: A Comprehensive Study (Working Paper August 2009)

Table Twenty-Seven- Victims by Day of Week and Hour of Day Shot: 2008								
	Sun	Mon	Tue	Wed	Thur	Fri	Sat	Total
0000-0100	6	1	3	1	3	3	1	18
0100-0200	1				3	1	2	7
0200-0300	1			1		1	1	4
0300-0400	2		3	1			2	8
0400-0500			1			1		2
0500-0600								0
0600-0700								0
0700-0800			1					1
0800-0900						2		2
0900-1000								0
1000-1100							1	1
1100-1200					2			2
1200-1300			1		1			2
1300-1400	3	1	1			1		6
1400-1500			1			1		2
1500-1600	2	1	2			1		6
1600-1700		3	2					5
1700-1800	2				1	1		4
1800-1900	1	1	1			2		5
1900-2000				1	1	2		4
2000-2100		2		1	1	1		5
2100-2200	1	3	2	2	1			9
2200-2300	3	1		4	4	3	1	16
2300-0000	4	1	2	4	2	2		15
Total	26	14	20	15	19	22	8	

The day of the week with the most shooting victims was Sunday. 12:00 – 1:00am was the hour of the day with the most victims. The day of the week with the fewest shooting victims was Saturday. The one-hour period in a week with the most shooting victims was Sunday Morning from 12:00 – 1:00am.

Table Twenty-Eight - Victims by Area of Body Shot: - 2008		
Area of Body Shot	Number	Percentage
Head, neck & face	19	13.6
Chest	11	7.9
Abdominal area	19	13.6
Hips, legs, groin & feet	54	38.6
Shoulders, arms & hands	24	17.1
Back	13	9.3
Total	140	100

The plurality of victims (38.6%) sustained gunshot wounds to their hips, legs, groin, or feet.

Table Twenty-Nine - Weapons Used in Shootings: 2008		
Type of Weapon	Number	Percentage
.22	5	7.8
.25	6	9.4
.32	2	3.1
9mm	26	40.6
.357	0	0.0
.380	0	0.0
.38	7	10.9
.40	11	17.2
.44	1	1.6
.45	6	9.4
Shotgun	0	0.0
Assault Rifle	0	0.0
Total	64	100.0

There were twelve categories of weapons identified as being used in shootings. The 9mm accounted for 40.6% the 64 weapons identified by calibre or other type as being used in 2008 shootings.

Table Thirty - Victim Cooperation: 2008		
Cooperative	Number	Percentage
Yes	53	46.1
No	62	53.9
Total	115	100.0

Of the 115 shooting non-fatal victims, 53.9% were found to be non-cooperative in the shooting investigation.

VICTIM / SUSPECT RELATIONSHIPS

Table Thirty - Known Suspect / Victim: Race and Sex Correlation: 2008			
Suspect	Victim	Number	Percentage of Total
Black Male	Black Male	107	85.6
Black Male	Black Female	4	3.2
Black Male	White Female	0	0.0
Black Male	Hispanic Male	1	.08
Black Male	Hispanic Female	1	.08
Black Female	Black Male	4	3.2
Hispanic Male	Black Female	1	.08
Hispanic Male	Hispanic Male	7	5.6
Total Known		125	100.0

In 2008, there were 125 instances of an individual being identified by race and sex as a suspect shooting a victim that was also identified by race and sex. In 111, or 88.8%, of those instances, it involved a black male shooting either another black male or a black female.

Table Thirty-One – Known Suspect / Victim: Age Correlation: 2008				
Suspect Age Group	Victim Age Group	Number in Victim Age Group by Suspect Age Group	Total Number / Percentage of Victims by Suspect Age Group	Percentage of Total
14 – 17	14-17	1	9 / 15.0	11.1
14 – 17	18 – 21	2		22.2
14 – 17	22 – 25	3		33.4
14 – 17	26 – 30	1		11.1
14 – 17	36 - 40	1		11.1
14 – 17	41 - 45	1		11.1
18 – 21	14 – 17	4	27 / 45.0	14.8
18 – 21	18 – 21	7		25.9
18 – 21	22 – 25	4		14.8
18 – 21	26 – 30	5		18.5
18 – 21	31 - 35	4		14.8
18 – 21	41 – 45	2		7.5
18 – 21	> 50	1	3.7	
22 – 25	14 – 17	1	16 / 26.6	6.3
22 – 25	18 – 21	5		31.3
22 – 25	22 – 25	2		12.4
22 – 25	26 – 30	5		31.3
22 – 25	31 – 35	2		12.4
22 – 25	46 – 50	1		6.3
26 – 30	18 – 21	1	5 / 8.3	20.0
26 - 30	26 - 30	2		40.0
26 – 30	31 - 35	1		2.0
26 – 30	41 - 45	1		20.0
31 - 35	26 - 30	1	2 / 3.4	50.0
31 – 35	36 - 40	1		50.0
36 – 40	26 - 30	1	1 / 1.7	100.0
Total	38	60 / 100.0		
			60 / 100.0	

In 2008, there were 38 instances of an individual being identified by age as a suspect shooting a victim that was also identified by age. 42.1% of those instances involved a 18-21 year old suspect shooting victim between the ages of 14-45 years.

APPENDIX A
 TWELVE-YEAR CHART OF SHOOTINGS IN WILMINGTON

Number of shooting victims in the City of Wilmington between calendar years 1996 – 2008																	
	1 st Quarter				2 nd Quarter				3 rd Quarter				4 th Quarter				Total
Year	Jan	Feb	Mar	Total	Apr	May	June	Total	July	Aug	Sept	Total	Oct	Nov	Dec	Total	
1996	6	7	5	18	13	7	5	25	21	6	12	39	4	11	10	25	107
1997	10	6	2	18	9	13	17	39	14	6	5	25	9	8	8	25	107
1998	9	3	6	18	3	9	3	15	3	14	3	20	11	7	2	20	73
1999	4	7	2	13	1	1	6	8	3	4	7	14	9	4	8	21	56
2000	4	3	1	8	7	4	4	15	7	9	6	22	3	5	7	15	60
2001	5	3	5	13	5	4	4	13	9	11	1	21	2	6	6	14	61
2002	2	16	5	23	7	9	4	20	6*	2	4	12	15	10	7	32	87
2003	7	2**	5**	14	6	6	4	16	7	6	**3*	16	5	7	2	14	60***
2004	7	5*	8	20	9	12	6	27	4	8	10	22	8	12	6	26	95
2005	6	11	8	25	3	8	5	16	5	6	12	23	4	8	6	18	82
2006	6	4	5	15	8	4	7	19	11	5	9	25	17	11	14	42	101
2007	3	4	2	9	8	7	11	26	8	7	9	24	13	12	8	33	92
2008	10	13	13	36	8	10	11	29	21	10	10	41	12	5	17	34	140

Area in gray shows shootings since the implementation of Operation Safe Streets in June 1997.

Data Source: WPD Crime Analysis Dept. 1/17/07

* Does not include an incident in which a police officer discharged his weapon.

**Does not include self-inflicted shooting victims.

***Disregard reporting of 2003 / 2004 shootings (prior August 12, 2004 memo). Data shown in this report shows corrections.