



**State of Delaware  
Executive Department  
Office of Management and Budget**

**To:** John Frazer  
**From:** Jorge Rodríguez-Labarca  
**Date:** October 29, 2009  
**Subject:** Third Quarter 2009 New Castle County Detention Center Status Report

---

On September 30, 2009, with a population of 68 the Detention Center was 6 percent over capacity. The capacity of 64 beds was exceeded by 4 youth.

*Admissions:* There were 219 admissions to the Detention Center during the third quarter of 2009.

*Admission demographics:* Of the 219 admissions, 58 were females and 161 were males. During the third quarter 154 African Americans, 3 Hispanics and 62 whites were admitted to the Detention Center.

*Leading charges at admission:* The most frequent leading charges at admission for the third quarter were violation of probation, 55; failure to appear in court, 14; and, burglary in the second degree and escape in the third degree, 10. Sixty-six youth, or 30 percent, were admitted to the Detention Center for violent felonies.

*Length of stay:* There were 68 youth at the Detention Center with an average length of stay (LOS) of 51 days and a maximum LOS of 372 days on September 30, 2009.

Of the 68 youth, there were 58 Family Court youth with an average LOS of 31 days, and 10 Superior Court youth with an average LOS of 167 days.

*Snapshot demographics:* Of the 68 youth on September 30, 7 were female and 61 were male. There were 53 African Americans, 2 whites, and 13 Hispanics.

*Youth's status:* There were 49 detained and 19 adjudicated youth on September 30, 2009.

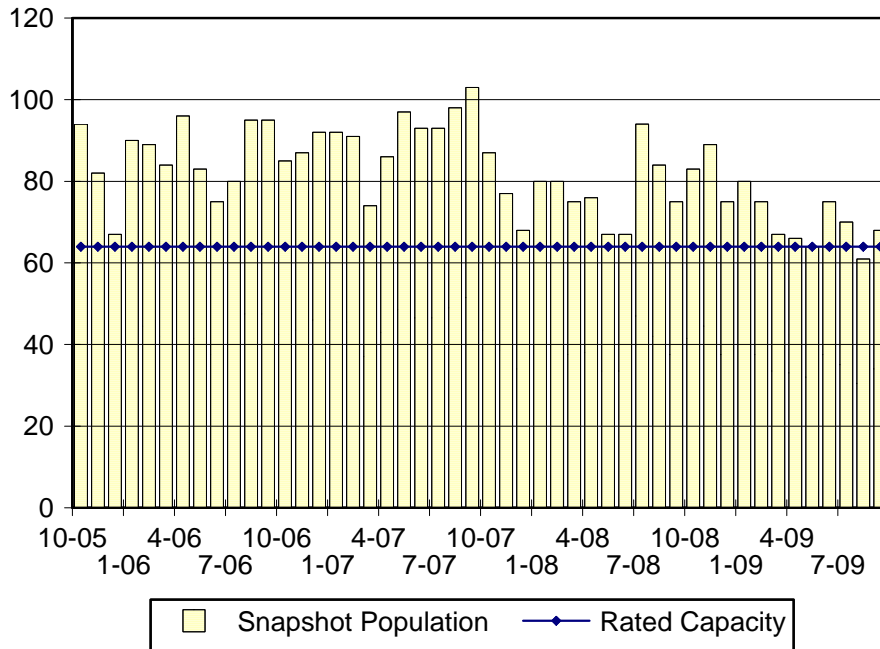
*Releases:* 227 youth were released during the third quarter of 2009 with an average LOS of 27 days, and a maximum of 258 days.



**Budget Development, Planning and Administration  
Statistical Analysis Center**

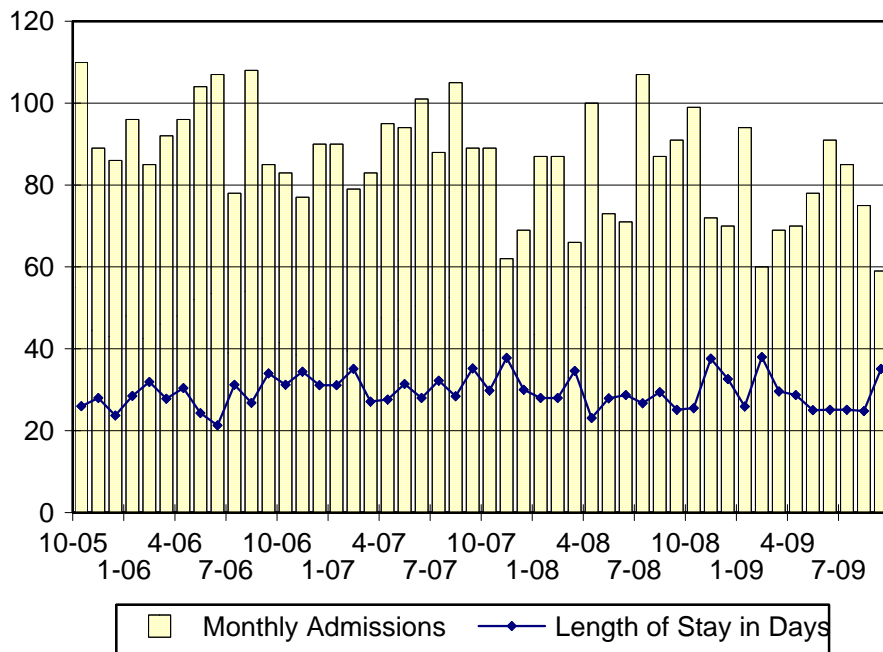
410 Federal Street • Suite 6 • Dover, DE 19901  
Phone: (302) 739-4626 • Fax: (302) 739-4630 • [www.omb.delaware.gov](http://www.omb.delaware.gov)

### NCCDC Snapshot Population and Rated Capacity



Snapshot populations are taken at the end of any given month.

### NCCDC Admissions and Time at NCCDC



Length of Stay: Average length of stay in days at the Detention Center given monthly admissions and populations.

## Admissions, Third Quarter 2009.

Month	Number	Percent
July	85	39
August	75	34
September	59	27
Total	219	100

## Admission Demographics, Third Quarter 2009.

Race/ethnicity and age	Gender		Total	
	Female	Male	Number	Percent
African American				
13	3	10	13	6
14	8	6	14	6
15	10	21	31	14
16	9	39	48	22
17	13	34	47	21
18	0	1	1	0
Subtotal	43	111	154	70
Hispanic				
16	0	2	2	1
17	0	1	1	0
Subtotal	0	3	3	1
White				
11	0	1	1	0
12	0	1	1	0
13	0	2	2	1
14	2	5	7	3
15	0	3	3	1
16	7	14	21	10
17	6	21	27	12
Subtotal	15	47	62	28
Total	58	161	219	100

### Admissions Profile for Third Quarter 2009 NCCDC Admittees.

Admissions	<u>Youth</u>			<u>Admissions</u>		
	Number	Percent	Cum. %	Number	Percent	Cum. %
Total	219	100%	100%	1,092	100%	100%
First admission	59	27%	27%	59	5%	5%
Multiple admissions	160	73%	73%	1,033	95%	95%
2 <sup>nd</sup>	29	13%	40%	58	5%	11%
3 <sup>rd</sup>	28	13%	53%	84	8%	18%
4 <sup>th</sup>	15	7%	60%	60	5%	24%
5 <sup>th</sup>	17	8%	68%	85	8%	32%
6 <sup>th</sup>	10	5%	72%	60	5%	37%
7 <sup>th</sup>	14	6%	79%	98	9%	46%
8 <sup>th</sup>	6	3%	81%	48	4%	51%
9 <sup>th</sup>	5	2%	84%	45	4%	55%
10 <sup>th</sup>	6	3%	86%	60	5%	60%
11 <sup>th</sup>	5	2%	89%	55	5%	65%
12 <sup>th</sup>	9	4%	93%	108	10%	75%
13 <sup>th</sup>	3	1%	94%	39	4%	79%
14 <sup>th</sup>	1	0%	95%	14	1%	80%
15 <sup>th</sup>	3	1%	96%	45	4%	84%
16 <sup>th</sup>	2	1%	97%	32	3%	87%
17 <sup>th</sup>	0	.	97%	0	.	87%
18 <sup>th</sup>	1	0%	97%	18	2%	89%
19 <sup>th</sup>	2	1%	98%	38	3%	92%
20 <sup>th</sup>	2	1%	99%	40	4%	96%
21 <sup>st</sup>	0	.	99%	0	.	96%
22 <sup>nd</sup>	1	0%	100%	22	2%	98%
...	.	.	100%	.	.	98%
39 <sup>th</sup>	1	0%	100%	24	2%	100%

Note: First admission means that, heretofore, a juvenile had never been admitted to Secure Detention, residential Level III, Level IV, Level V, or Division of Family Services (DFS) and Child Mental Health (CMH) programs that provide residential services. Included in the count of multiple admissions are those admitted to Secure Detention, residential Level III, Level IV, Level V, and DFS and CMH programs that provide residential services which are classified by DSCYF as crisis bed; mental health; residential group care; treatment center; residential Interagency Collaborative Team; residential treatment, mental health; and residential treatment, substance abuse.

**Admission Profile by Dispositional  
Level for Third Quarter 2009 NCCDC Admittees.**

Admissions	Number and percent of youth							
	Sec. Det.		L. V		L. IV		L. III	
	N.	%	N.	%	N.	%	N.	%
Total	219	100	219	100	219	100	219	100
No prior admissions	82	37	180	82	133	61	76	35
Multiple admissions	137	63	39	18	86	39	143	65
2 <sup>nd</sup>	39	18	23	11	11	5	40	18
3 <sup>rd</sup>	42	19	11	5	27	12	39	18
4 <sup>th</sup>	22	10	4	2	14	6	27	12
5 <sup>th</sup>	16	7	0	.	9	4	22	10
6 <sup>th</sup>	9	4	0	.	8	4	7	3
7 <sup>th</sup>	3	1	0	.	6	3	4	2
8 <sup>th</sup>	2	1	1	0	8	4	1	0
9 <sup>th</sup>	3	1	0	.	1	0	0	.
10 <sup>th</sup>	1	0	0	.	2	1	2	1
11 <sup>th</sup>	0	.	0	.	0	.	0	.
12 <sup>th</sup>	0	.	0	.	0	.	1	0

Note: Included in the count of multiple admissions are those admitted to Secure Detention (Sec. Det.), Level III, Level IV, Level V, and Division of Family Services and Child Mental Health programs that provide residential services which are classified by DSCYF as crisis bed; mental health; residential group care; treatment center; residential Interagency Collaborative Team; residential treatment, mental health; and residential treatment, substance abuse.

Reading this table: This table shows that 63 percent of youth admitted to the New Castle County Detention Center during the third quarter of 2009 had prior admissions to secure detention, 18 percent to Level V, 39 percent to Level IV, and 65 percent to Level III. Thirty-five of the 82 youth without prior detention admissions had prior admissions to Levels III, IV and/or V.

## Leading Charge at Admission, Third Quarter 2009.

Detained felonies and misdemeanors, 10 Del.C. § 1007(a)(2)	Total	Gender Minority			
		F	M	W	M
Acquire a controlled substance by robbery, theft or burglary	1	0	1	1	0
Arson in the second degree, attempted	1	0	1	0	1
Assault in the second degree	3	0	3	2	1
Assault in the third degree	7	5	2	1	6
Breach of conditions of release, felony	1	0	1	0	1
Burglary in the second degree	10	4	6	5	5
Burglary in the third degree	1	0	1	1	0
Carjacking in the second degree, class E felony	1	0	1	0	1
Carrying a concealed deadly weapon, prior	1	0	1	1	0
Distribution of a controlled substance within 300 feet of a park	3	0	3	0	3
Escape in the second degree	1	0	1	1	0
Escape after conviction	5	5	0	0	5
Failure to register as a sex offender	1	0	1	0	1
Kidnapping in the first degree	1	0	1	0	1
Menacing, aggravated	2	0	2	1	1
Murder in the first degree	1	0	1	0	1
Possession of a deadly weapon by a person prohibited	1	0	1	0	1
Possession of a deadly weapon by a person prohibited, firearm	2	0	2	0	2
Possession of a deadly weapon during the commission of a felony	4	1	3	2	2
Possession of a firearm during the commission of a felony	3	0	3	1	2
Possession with intent to deliver narcotics	4	0	4	0	4
Possession with intent to deliver non-narcotics	3	0	3	0	3
Rape in the first degree	1	0	1	1	0
Rape in the second degree	2	0	2	2	0
Rape in the fourth degree	1	1	0	0	1
Receiving stolen property, felony	1	0	1	0	1
Riot	2	0	2	0	2
Robbery in the first degree	7	0	7	2	5
Robbery in the first degree, attempted	5	1	4	0	5
Robbery in the second degree	3	0	3	0	3
Robbery in the second degree, attempted	1	0	1	0	1
Tampering with physical evidence	1	0	1	0	1
Theft of a firearm	1	0	1	0	1
Theft of a motor vehicle	3	0	3	2	1
Theft of a motor vehicle, attempted	1	0	1	0	1
Theft, felony	1	1	0	1	0
Trafficking in cocaine from 10 to 50 grams	1	0	1	1	0
Subtotal	88	18	70	25	63

## Leading Charge at Admission, Third Quarter 2009.

Detained admissions for charges not referenced in 10 Del.C. § 1007	Total	Gender		Minority	
		F	M	W	M
Breach of conditions of release, misdemeanor	2	0	2	0	2
Civil contempt, juvenile fails to pay fines	1	1	0	0	1
Criminal contempt	2	1	1	0	2
Criminal impersonation	2	1	1	1	1
Criminal trespassing in the third degree	1	0	1	0	1
Driving without a license	1	0	1	0	1
Escape in the third degree	8	0	8	0	8
Fail to give full time and attention to operating a motor vehicle	1	0	1	1	0
Offensive touching	6	3	3	3	3
Possession or use of narcotics	1	0	1	1	0
Receiving stolen property, misdemeanor	1	0	1	0	1
Resisting arrest	2	0	2	2	0
Shoplifting, misdemeanor	4	4	0	0	4
Terroristic threatening, misdemeanor	7	1	6	4	3
Unauthorized use of a motor vehicle	2	0	2	0	2
Underage possession or consumption of alcohol	1	0	1	1	0
Violation of curfew	2	0	2	0	2
<b>Subtotal</b>	<b>44</b>	<b>11</b>	<b>33</b>	<b>13</b>	<b>31</b>
<b>Administrative violations and holds</b>					
Administrative hold	1	0	1	0	1
Administrative hold, pending Aftercare revocation	2	0	2	2	0
Internal transfer	1	1	0	0	1
<b>Subtotal</b>	<b>4</b>	<b>1</b>	<b>3</b>	<b>2</b>	<b>2</b>
<b>Violation of probation pursuant to 11 Del.C. § 4334</b>					
Violation of probation	37	16	21	7	30
<b>Subtotal</b>	<b>37</b>	<b>16</b>	<b>21</b>	<b>7</b>	<b>30</b>
<b>Failure to appear, 10 Del.C. § 1007(a)(3)</b>					
Family court capias	1	1	0	0	1
Failure to appear in court	14	4	10	5	9
<b>Subtotal</b>	<b>15</b>	<b>5</b>	<b>10</b>	<b>5</b>	<b>10</b>
<b>Repeated failure to comply, 10 Del.C. § 1007(a)(4)</b>					
Escape in the third degree	2	0	2	1	1
<b>Subtotal</b>	<b>2</b>	<b>0</b>	<b>2</b>	<b>1</b>	<b>1</b>

## Leading Charge at Admission, Third Quarter 2009.

	Total	Gender		Minority	
		F	M	W	M
Fugitive from another state, 11 Del. C. § 2513					
Administrative hold, fugitive from another state	1	0	1	1	0
Subtotal	1	0	1	0	0
Sentenced admissions pursuant to an adjudication					
Assault in the third degree	1	0	1	1	0
Burglary in the first degree	1	0	1	0	1
Criminal impersonation	1	1	0	1	0
Disorderly conduct	1	0	1	0	1
Drug Court violation	2	0	2	0	2
Offensive touching, class A misdemeanor	1	0	1	0	1
Possession or use of narcotics	1	0	1	0	1
Shoplifting, misdemeanor	1	0	1	0	1
Terroristic threatening, misdemeanor	1	0	1	1	0
Violation of probation	18	6	12	5	13
Subtotal	28	7	21	8	20
Total	219	58	161	62	157

## Crime Category at Admission, Third Quarter 2009.

Category	Number	Percent
Violent felony	66	30
Violent misdemeanor	18	8
Nonviolent felony	16	7
Nonviolent misdemeanor	49	22
Traffic misdemeanor	2	1
Unclassified violation	3	1
Unclassified misdemeanor	2	1
Drug Court violation	2	1
Probation violation	55	25
Administrative hold/Aftercare revocation	5	2
Total	219	100

While 55 youth were admitted solely for a violation of probation (VOP), another 44 had a VOP and an arrest for another crime. A total of 99 youth were charged with a VOP.



### Length of Stay on September 30, 2009.

LOS in intervals	Youth	Length of Stay		
	Number	Average	Median	Maximum
1 to 3 days	7	2	2	3
4 to 14 days	15	9	9	14
15 to 29 days	14	23	24	29
30 to 59 days	14	41	40	51
60 to 119 days	13	83	85	106
120 to 179 days	1	161	161	161
180 plus days	4	300	286	372
Summary	68	51	29	372

### Legal Status by Average LOS on September 30, 2009.

	Detained		Sentenced		Total	
	No.	LOS	No.	LOS	No.	LOS
Family Court	40	26	18	43	58	31
30 days or less	26	10	9	22	35	13
31 days or more	14	55	9	64	23	58
Superior Court	9	151	1	313	10	167
120 days or less	5	63	0	.	5	63
121 days or more	4	262	1	313	5	272
Total	49	49	19	57	68	51

### Youth's Involvement on September 30, 2009.

Detained	Number	LOS in days
Aftercare	10	47
Probation	7	137
Serious Juvenile Offender and Comprehensive Aftercare Program	1	14
Division of Child Mental Health	3	44
Division of Family Services	0	.
Family Court detainees	40	26
Superior Court detainees	9	151
<b>Sentenced</b>		
Division of Family Services	0	.
Division of Child Mental Health	2	170
Family Court	18	43
Superior Court	0	.

Population Demographics on September 30, 2009.

Race/ethnicity and age	Gender		Total	
	Female	Male	Number	Percent
African American				
13	0	6	6	9
14	2	4	6	9
15	1	11	12	18
16	1	11	12	18
17	2	14	16	24
18	0	1	1	1
Subtotal	6	47	53	78
Hispanic				
16	0	1	1	1
17	0	1	1	1
Subtotal	0	2	2	3
White				
13	0	1	1	1
14	0	1	1	1
16	0	5	5	7
17	1	5	6	9
Subtotal	1	12	13	19
Total	7	61	68	100

Releases, Third Quarter 2009.

To whom released/program	Number	Percent	LOS in days	
			Mean	Max.
Releases to the community				
Child Mental Health, Pressley Ridge IRT	1	0	102	102
Community Services, Camelot Non-Secure Detention	14	6	7	33
Community Services, Camelot, Shelter	4	2	6	17
Community Services, G4S Justice Services, Inc., E. M.	2	1	61	105
Community Services, Peoples Place II	2	1	26	48
Community Services, Peoples Place II, Non-Secure Detention	13	6	4	19
Community Services, Peoples Place II, Shelter	1	0	26	26
Community Services, Project Stay Free, Day Treatment	2	1	70	135
Community Services, Project Stay Free, Electronic Monitoring	11	5	12	49
Community Services, Project Stay Free, ICCP	3	1	20	42
Community Services, Psychiatric Children Srv., M.S.T.	1	0	28	28
Community Services, VisionQuest, Community Based Services	1	0	21	21
Community Services, VisionQuest, FCIM	2	1	10	11
Division of Family Services	4	2	13	42
Division of Family Services, Child Inc., Shelter	1	0	12	12
Guardian	2	1	28	53
Parent	58	26	21	258
Relative	2	1	10	16
Releases to the community subtotal	124	55	18	258
Releases to a secure placement				
Child Mental Health, Dover Behavioral Health System	1	0	14	14
Child Mental Health, Red Lion RTC	1	0	3	3
Child Mental Health, Rockford Center	1	0	33	33
Child Mental Health, Terry Children's Center, Crisis Bed	2	1	8	13
Community Services, Chamberlain Academy High Impact	1	0	30	30
Community Services, Glen Mills Schools	3	1	61	84
Community Services, Mountain Manor Treatment Center	1	0	47	47
Community Services, Springfield Academy	1	0	25	25
Community Services, Today Inc.	1	0	28	28
Community Services, Youth Services Agency	9	4	38	123
Department Of Correction, General Population	1	0	172	172
Department Of Correction, YCOP	3	1	133	203
U.S. Immigration and Customs Enforcement Bureau	4	2	10	35
YRS, Ferris School For Boys	16	7	70	219
YRS, Grace Cottage	19	8	13	42
YRS, Mowlds Cottage	13	6	24	92
YRS, New Castle County Detention Center	1	0	1	1
YRS, Snowden	21	9	41	94
YRS, Stevenson House Detention Center	4	2	4	7
Total	103	45	38	219
Total releases	227	100	27	258

Legal Status by Average LOS at Release, Third Quarter 2009.

	<u>Detained</u>		<u>Sentenced</u>		<u>Total</u>	
	No.	LOS	No.	LOS	No.	LOS
Family Court	96	11	126	33	222	23
30 days or less	84	5	82	15	166	10
31 days or more	12	50	44	67	56	63
Superior Court	4	171	1	258	5	188
120 days or less	1	112	0	.	1	112
121 days or more	3	190	1	258	4	207
Total	100	17	127	35	227	27

Crime Category at Release, Third Quarter 2009.

Category	Number	Percent	<u>LOS in days</u>	
			Mean	Maximum
Violent felony	63	28	45	258
Violent misdemeanor	22	10	18	95
Non-violent felony	25	11	37	203
Non-violent misdemeanor	50	21	24	102
Traffic misdemeanor	2	1	2	2
Unclassified misdemeanor	2	1	16	16
Unclassified violation	1	0	32	32
Drug Court violation	2	1	9	17
Probation violation	56	25	12	39
Administrative hold/Aftercare revocation	4	2	11	36
Total	227	100	27	258