



STATE OF DELAWARE
EXECUTIVE DEPARTMENT
OFFICE OF MANAGEMENT AND BUDGET

To: John Frazer
From: Jorge Rodríguez-Labarca
Date: February 28, 2008
Subject: Fourth Quarter 2007 New Castle County Detention Center Status Report

On December 31, 2007, with a population of 69 the Detention Center was 8 percent over capacity. The capacity of 64 beds was exceeded by 5 youth.

Admissions: There were 220 admissions to the Detention Center during the fourth quarter of 2007.

Admission demographics: Of the 220 admissions, 46 were females and 174 were males. During the fourth quarter 152 African Americans, 3 Hispanics and 65 whites were admitted to the Detention Center.

Leading charges at admission: The most frequent leading charges at admission for the fourth quarter were violation of probation, 67; failure to appear in court, 20; burglary in the second degree, 19. 71 youth, or 32 percent, were admitted to the Detention Center for violent felonies.

Length of stay: There were 69 youth at the Detention Center with an average length of stay (LOS) of 72 days and a maximum LOS of 532 days on December 31, 2007.

Of the 69 youth, there were 41 Family Court youth with an average LOS of 25 days, and 28 Superior Court youth with an average LOS of 141 days.

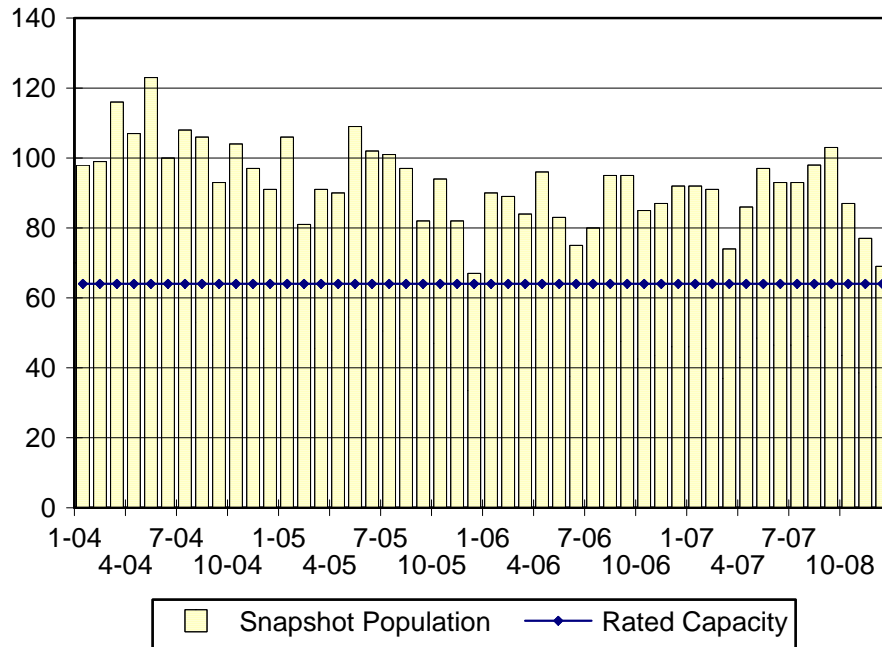
Snapshot demographics: Of the 69 youth on December 31, 8 were female and 61 were male. There were 48 African Americans, 2 Hispanic, and 19 whites.

Youth's status: There were 59 detained and 10 adjudicated youth on December 31, 2007.

Releases: 255 youth were released during the fourth quarter of 2007 with an average LOS of 32 days, and a maximum of 289 days.

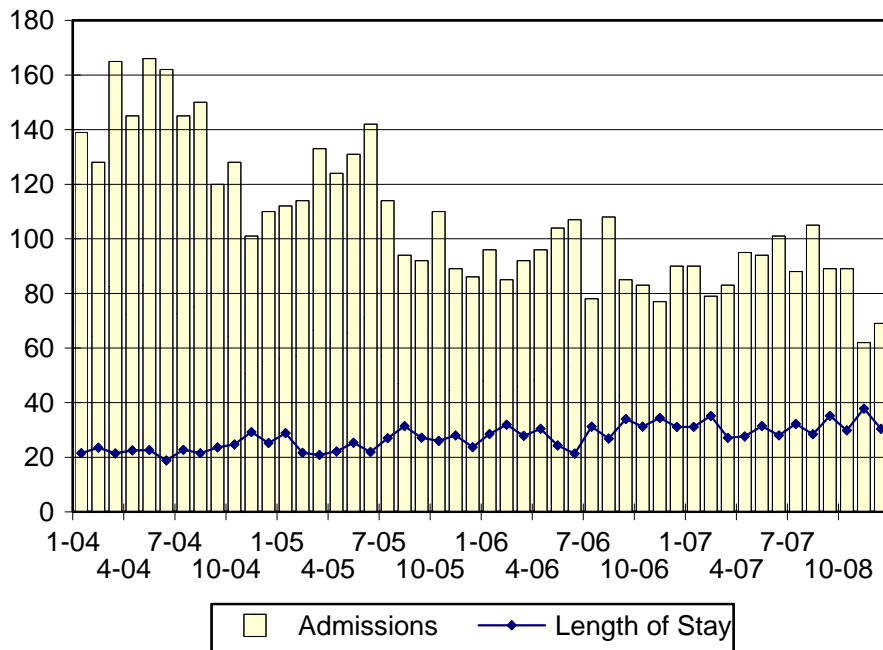


NCCDC Snapshot Population and Rated Capacity



Snapshot populations are taken at the end of any given month.

NCCDC Admissions and Time at NCCDC



Length of Stay: Average length of stay in days at the Detention Center given monthly admissions and populations.

Admissions, Fourth Quarter 2007.

Month	Number	Percent
October	89	40
November	62	28
December	69	31
Total	220	100

Admission Demographics, Fourth Quarter 2007.

Race/ethnicity and age	Gender		Total	
	Female	Male	Number	Percent
African American				
12	0	1	1	0
13	3	2	5	2
14	3	18	21	10
15	9	24	33	15
16	9	44	53	24
17	3	34	37	17
18	1	1	2	1
Subtotal	28	124	152	69
Hispanic				
16	0	1	1	0
17	0	2	2	1
Subtotal	0	3	3	1
White				
13	1	0	1	0
14	3	1	4	2
15	3	8	11	5
16	6	15	21	10
17	5	22	27	12
18	0	1	1	0
Subtotal	18	47	65	30
Total	46	174	220	100

Admissions Profile for Fourth Quarter 2007 NCCDC Admittees.

Admissions	Youth			Admissions		
	Number	Percent	Cum. %	Number	Percent	Cum. %
Total	220	100%	100%	860	100%	100%
First admission	77	35%	35%	77	9%	9%
Multiple admissions	143	65%	65%	783	91%	91%
2 nd	29	13%	48%	58	7%	16%
3 rd	28	13%	61%	84	10%	25%
4 th	16	7%	68%	64	7%	33%
5 th	15	7%	75%	75	9%	42%
6 th	11	5%	80%	66	8%	49%
7 th	8	4%	84%	56	7%	56%
8 th	8	4%	87%	64	7%	63%
9 th	8	4%	91%	72	8%	72%
10 th	6	3%	94%	60	7%	79%
11 th	5	2%	96%	55	6%	85%
12 th	1	0%	96%	12	1%	86%
13 th	4	2%	98%	52	6%	92%
14 th	0	.	98%	0	.	92%
15 th	1	0%	99%	15	2%	94%
16 th	2	1%	100%	32	4%	98%
17 th	0	.	100%	0	.	98%
18 th	1	0%	100%	18	2%	100%

Note: First admission means that, heretofore, a juvenile had never been admitted to Secure Detention, Level III Residential, Level IV, Level V, or Division of Family Services (DFS) and Child Mental Health (CMH) programs that provide residential services. Included in the count of multiple admissions are those admitted to Secure Detention, Level III Residential, Level IV, Level V, and DFS and CMH programs that provide residential services which are classified by DSCYF as crisis bed; mental health; residential group care; treatment center; residential Interagency Collaborative Team; residential treatment, mental health; and residential treatment, substance abuse.

**Admission Profile by Dispositional
Level for Fourth Quarter 2007 NCCDC Admittees.**

Admissions	Number and percent of youth							
	Sec. Det.		L. V		L. IV		L. IIIR	
	N.	%	N.	%	N.	%	N.	%
Total	220	100	220	100	220	100	220	100
No prior admissions	101	46	149	68	135	61	97	44
Multiple admissions	119	54	71	32	85	39	123	56
2 nd	56	25	44	20	37	17	49	22
3 rd	21	10	18	8	25	11	32	15
4 th	21	10	7	3	8	4	25	11
5 th	5	2	1	0	12	5	14	6
6 th	6	3	1	0	3	1	2	1
7 th	7	3	0	.	0	.	.	.
8 th	2	1	0	.	0	.	1	0
9 th	0	.	0	.	0	.	0	.
10 th	1	0	0	.	0	.	0	.

Note: Included in the count of multiple admissions are those admitted to Secure Detention (Sec. Det.), Level III Residential (L. IIIR), Level IV, Level V, and Division of Family Services and Child Mental Health programs that provide residential services which are classified by DSCYF as crisis bed; mental health; residential group care; treatment center; residential Interagency Collaborative Team; residential treatment, mental health; and residential treatment, substance abuse.

Reading this table: This table shows that 54 percent of youth admitted to the New Castle County Detention Center during the fourth quarter of 2007 had prior admissions to secure detention, 32 percent to Level V, 39 percent to Level IV, and 56 percent to Level IIIR. Thirty-nine of the 101 youth without prior detention admissions had prior admissions to Levels IIIR, IV and/or V.

Leading Charge at Admission, Fourth Quarter 2007.

Detained felonies and misdemeanors, 10 Del.C. § 1007(a)(2)	Total	Gender		Minority	
		F	M	W	M
Assault in the second degree	1	0	1	0	1
Assault in the third degree	2	1	1	0	2
Bombs, incendiary or explosive devices, molotov cocktails	1	0	1	1	0
Burglary in the second degree	19	1	18	6	13
Burglary in the third degree	4	0	4	3	1
Carjacking in the first degree, class B felony	1	0	1	0	1
Carjacking in the second degree, class E felony	1	0	1	0	1
Carrying a concealed deadly weapon	1	0	1	0	1
Possession of a deadly weapon by person prohibited, firearm	1	0	1	0	1
Possession of a deadly weapon during the commission of a felony	5	1	4	3	2
Possession of a firearm during the commission of a felony	3	1	2	3	0
Possession with intent to deliver schedule III, IV or V narcotics	1	0	1	1	0
Possession with intent to deliver narcotics	9	1	8	0	9
Possession with intent to deliver non-narcotics	2	0	2	0	2
Rape in the first degree	1	0	1	0	1
Rape in the first degree, attempted	1	0	1	0	1
Rape in the second degree	1	0	1	0	1
Receiving stolen property, felony	6	0	6	2	4
Robbery in the first degree	14	0	14	2	12
Robbery in the first degree, attempted	6	0	6	0	6
Robbery in the second degree	1	0	1	0	1
Theft, felony	1	0	1	1	0
Trafficking in cocaine from ten to 50 grams	1	0	1	0	1
Unlawful sexual contact in the second degree	1	0	1	0	1
Subtotal	84	5	79	22	62
Failure to appear, 10 Del.C. § 1007(a)(3)					
Failure to appear in court	20	5	15	3	17
Subtotal	20	5	15	3	17

Leading Charge at Admission, Fourth Quarter 2007.

Detained admissions for charges not referenced in 10 Del.C. § 1007	Total	Gender		Minority	
		F	M	W	M
Breach of conditions of release, misdemeanor	2	1	1	2	0
Criminal contempt, disorderly	1	0	1	0	1
Criminal mischief, unclassified misdemeanor	1	0	1	0	1
Disorderly conduct	1	0	1	0	1
Escape in the third degree	1	0	1	0	1
Offensive touching	3	1	2	2	1
Possession or use of a non-narcotic	1	0	1	0	1
Receiving stolen property, misdemeanor	1	0	1	1	0
Resisting arrest	1	1	0	0	1
Terroristic threatening, misdemeanor	4	1	3	2	2
Unlawful imprisonment in the second degree	1	0	1	0	1
Subtotal	17	4	13	7	10
Administrative violations and holds					
Administrative hold	3	1	2	0	3
Internal transfer	7	2	5	1	6
Subtotal	10	3	7	1	9
Repeated failure to comply, 10 Del.C. § 1007(a)(4)					
Escape in the third degree	1	0	1	0	1
Violation of probation	1	1	0	1	0
Subtotal	2	1	1	1	1
Fugitive from another state, 11 Del.C. § 2513					
Administrative hold, fugitive from another state	2	1	1	1	1
Subtotal	2	1	1	1	1

Leading Charge at Admission, Fourth Quarter 2007.

Sentenced admissions pursuant to an adjudication	Total	Gender		Minority	
		F	M	W	M
Assault in the third degree	1	0	1	1	0
Conspiracy in the second degree	1	0	1	0	1
Drug court violation	3	0	3	1	2
Forgery in the second degree	1	1	0	0	1
Identity theft	1	1	0	0	1
Loitering	2	0	2	0	2
Offensive touching	1	1	0	1	0
Possession or use of a non-narcotic	1	0	1	0	1
Possession with intent to deliver narcotics	2	0	2	0	2
Receiving stolen property, misdemeanor	1	0	1	0	1
Reckless endangering in the second degree	1	0	1	1	0
Resisting arrest with force or violence, class G felony	1	0	1	0	1
Unauthorized use of a motor vehicle	3	1	2	0	3
Violation of probation	29	9	20	14	15
Subtotal	48	13	35	18	30
Violation of probation pursuant to 11 Del.C. § 4334					
Violation of probation	37	14	23	12	25
Subtotal	37	14	23	12	25
Total	220	46	174	65	155

Crime Category at Admission, Fourth Quarter 2007.

Category	Number	Percent
Violent felony	71	32
Violent misdemeanor	8	4
Nonviolent felony	17	8
Nonviolent misdemeanor	40	18
Probation violation	67	30
Administrative hold/Aftercare revocation	12	5
Drug Court violation	3	1
Unclassified violation	2	1
Total	220	100

While 67 youth were admitted solely for a violation of probation (VOP), another 33 had a VOP and an arrest for another crime. A total of 100 youth were charged with a VOP.

Length of Stay on December 31, 2007.

LOS in intervals	<u>Youth</u>	<u>Length of Stay</u>		
	Number	Average	Median	Maximum
1 to 3 days	1	3	3	3
4 to 14 days	16	11	12	14
15 to 29 days	14	22	19	28
30 to 59 days	12	45	44	57
60 to 119 days	10	98	97	119
120 to 179 days	10	143	136	173
180 plus days	6	256	204	532
Summary	69	72	42	532

Legal Status by Average LOS on December 31, 2007.

	<u>Detained</u>		<u>Sentenced</u>		<u>Total</u>	
	No.	LOS	No.	LOS	No.	LOS
Family Court	32	22	9	34	41	25
30 days or less	25	16	5	14	30	16
31 days or more	7	46	4	58	11	50
Superior Court	27	138	1	214	28	141
120 days or less	12	81	0	.	12	81
121 days or more	15	183	1	214	16	185
Total	59	75	10	52	69	72

Youth's Involvement on December 31, 2007.

Detained	Number	LOS in days
Aftercare	2	79
Serious Juvenile Offender and Comprehensive Aftercare Program	4	126
Family Court detainees	32	22
Superior Court detainees	27	138
Sentenced		
Family Court	9	34
Superior Court	1	214

Population Demographics on December 31, 2007.

Race/ethnicity and age	Gender		Total	
	Female	Male	Number	Percent
African American				
13	0	1	1	1
14	0	5	5	7
15	1	7	8	12
16	3	14	17	25
17	1	16	17	25
Subtotal	5	43	48	70
Hispanic				
16	0	1	1	1
17	0	1	1	1
Subtotal	0	2	2	3
White				
14	2	0	2	3
15	1	1	2	3
16	0	6	6	9
17	0	9	9	13
Subtotal	3	16	19	28
Total	8	61	69	100

Releases, Fourth Quarter 2007.

To whom released/program	Number	Percent	LOS in days	
			Mean	Max.
Releases to the community				
Community Services, Camelot Non-Secure Detention	25	10	2	5
Community Services, Camelot Shelter Services	1	0	2	2
Community Services, Child, Inc.	1	0	4	4
Community Services, Lead, Inc.	1	0	127	127
Community Services, Peoples Place II Non-Secure Detention	6	2	9	36
Community Services, Project Stay Free	1	0	3	3
Community Services, Project Stay Free Electronic Monitoring	11	4	12	34
Community Services, Project Stay Free ICCP	5	2	13	30
Community Services, Providence Non-Secure Detention	5	2	2	2
Community Services, VisionQuest Community Based Services	1	0	5	5
Division of Family Services	3	1	12	26
Parent	67	25	33	272
Probation	1	0	21	21
Relative	3	1	65	172
Releases To The Community Subtotal	132	52	22	272
Releases To A Secure Placement				
Child Mental Health, Iron Hill Residential Treatment Center	1	0	3	3
Child Mental Health, Middletown Manor RTC	1	0	21	21
Child Mental Health, Therapeutic Center At Fox Chase	1	0	49	49
Community Services, Chamberlain Academy General	1	0	11	11
Community Services, Chamberlain Academy High Impact	6	2	52	124
Community Services, Clarinda Academy	1	0	72	72
Community Services, Glen Mills Schools	3	1	91	220
Community Services, Mountain Manor Treatment Center	1	0	99	99
Community Services, Palmetto Point Program	1	0	17	17
Community Services, Southwest Indiana	3	1	82	121
Community Services, Springfield Academy	9	4	34	87
Community Services, Summit Academy	8	3	61	117
Community Services, VisionQuest Boot Camp	4	2	29	73
Community Services, VisionQuest Lady Of The Lakes	4	2	45	62
Community Services, Youth Services Agency	15	6	21	63
Department of Correction	8	3	170	289
Department of Correction, Youthful Criminal Offender Program	2	1	129	165
Pennsylvania authorities	1	0	21	21
U.S. Citizen and Immigration Services	1	0	13	13
YRS, Ferris School For Boys	13	5	30	72
YRS, Grace Cottage	13	5	7	51
YRS, Mowlds Cottage	2	1	3	3
YRS, New Castle County Detention Center	2	1	7	8
YRS, Snowden Cottage	22	9	26	99
Releases to a secure placement subtotal	123	48	43	289
Total releases	255	100	32	289

Legal Status by Average LOS at Release, Fourth Quarter 2007.

	<u>Detained</u>		<u>Sentenced</u>		<u>Total</u>	
	No.	LOS	No.	LOS	No.	LOS
Family Court	95	11	139	32	234	24
30 days or less	88	5	89	14	177	9
31 days or more	7	89	50	65	57	68
Superior Court	14	99	7	182	21	127
120 days or less	6	19	2	100	8	40
121 days or more	8	159	5	215	13	181
Total	109	22	146	39	255	32

Crime Category at Release, Fourth Quarter 2007.

Category	Number	Percent	<u>LOS in days</u>	
			Mean	Maximum
Violent felony	102	40	55	289
Violent misdemeanor	20	8	24	85
Non-violent felony	15	6	32	127
Non-violent misdemeanor	31	12	18	56
Traffic misdemeanor	1	0	28	28
Unclassified misdemeanor	1	0	3	3
Unclassified violation	7	3	13	38
Probation violation	69	27	12	91
Drug Court violation	3	1	4	6
Administrative hold/Aftercare revocation	6	2	11	19
Total	255	100	32	289