



**STATE OF DELAWARE
EXECUTIVE DEPARTMENT
OFFICE OF MANAGEMENT AND BUDGET**

To: John Frazer
From: Jorge Rodríguez-Labarca
Date: August 11, 2006
Subject: Second Quarter 2006 New Castle County Detention Center Status Report

On June 30, 2006, with a population of 75, the Detention Center was 17 percent over capacity. The capacity of 64 beds was exceeded by 11 youth.

Admissions: There were 307 admissions to the Detention Center during the second quarter of 2006.

Admission demographics: Of the 307 admissions, 71 were females and 236 were males. During the second quarter 211 African Americans, one Asian American, 9 Hispanics and 86 whites were admitted to the Detention Center.

Leading charges at admission: The most frequent leading charges at admission for the second quarter were violation of probation, 75; robbery in the first degree, 27; and, failure to appear in court, 23. 106 youth, or 35 percent, were admitted to the Detention Center for violent felonies.

Length of stay: On June 30, there were 75 youth at the Detention Center with an average length of stay (LOS) of 34 days and a maximum LOS of 146 days.

Of the 75 youth, there were 58 Family Court youth with an average LOS of 22 days, and 17 Superior Court youth with an average LOS of 74 days.

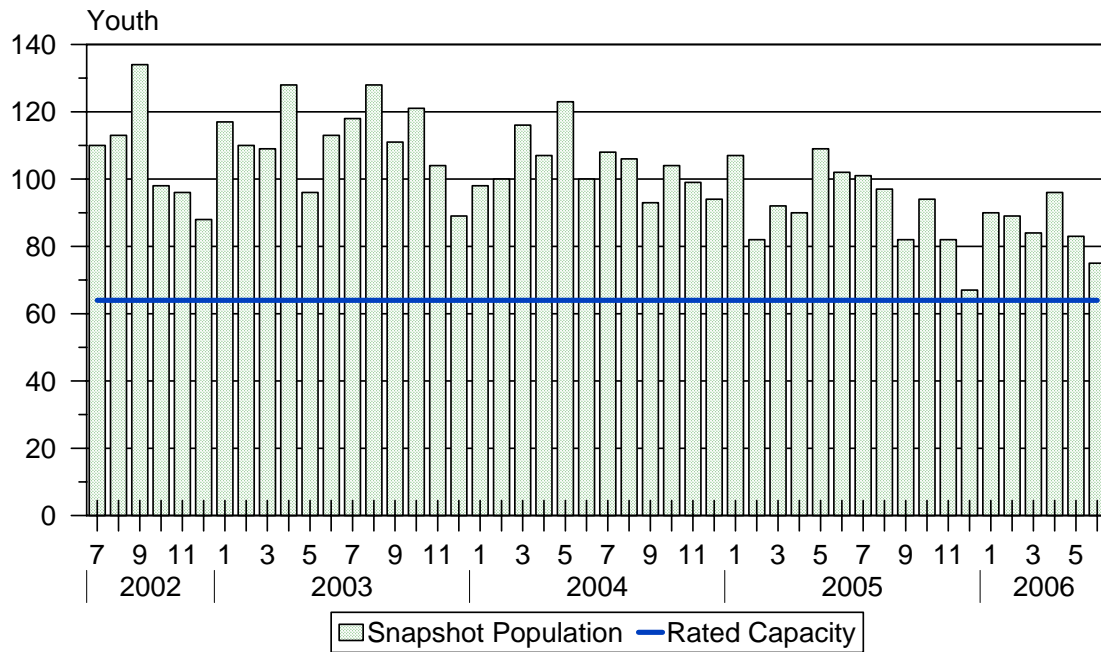
Snapshot demographics: Of the 75 youth on June 30, nine were female and 66 were male. There were 59 African Americans, 15 whites and one Hispanic.

Youth's status: On June 30, 2006, there were 58 detained and 17 adjudicated youth.

Releases: 315 youth were released during the second quarter of 2006 with an average LOS of 32 days, and a maximum of 444 days.

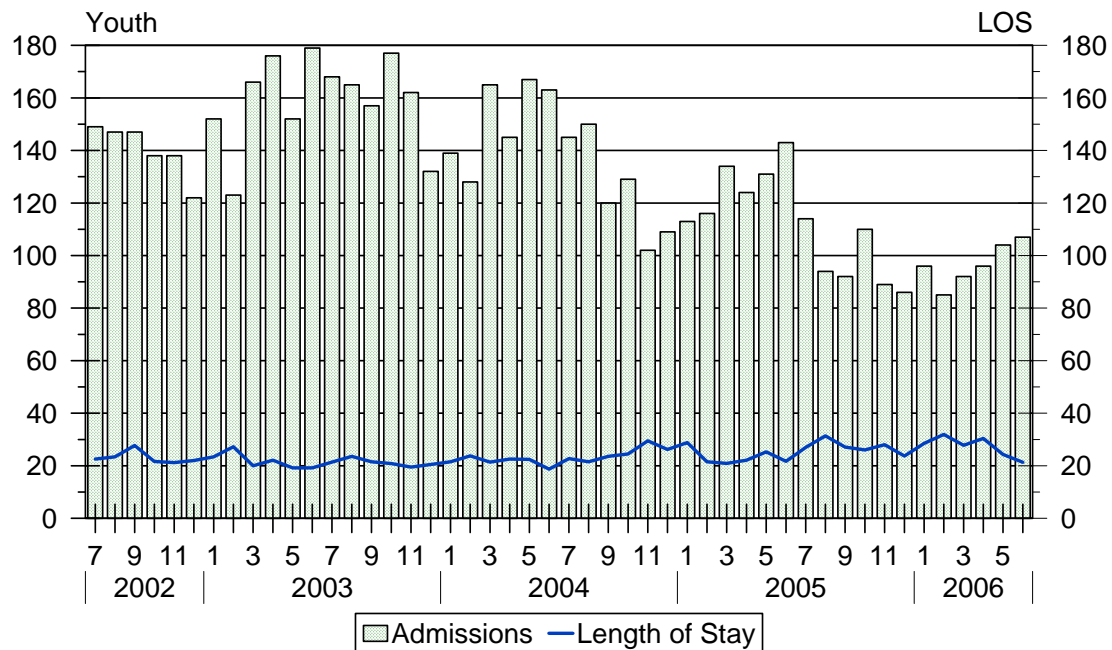


NCCDC Snapshot Population and Rated Capacity



Snapshot populations are taken at the end of any given month.

NCCDC Admissions and Time at NCCDC



Length of Stay: Average length of stay in days at the Detention Center given monthly admissions and populations.

Admissions, Second Quarter 2006.

Month	Number	Percent
April	96	31
May	104	34
June	107	35
Total	307	100

Admission Demographics, Second Quarter 2006.

Race/ethnicity and age	Gender		Total	
	Female	Male	Number	Percent
Asian American				
16	0	1	1	0
Subtotal	0	1	1	0
African American				
12	1	9	10	3
13	9	8	17	6
14	11	21	32	10
15	6	35	41	13
16	9	44	53	17
17	7	48	55	18
18	0	3	3	1
Subtotal	43	168	211	69
Hispanic				
14	0	1	1	0
15	1	2	3	1
16	1	2	3	1
17	0	2	2	1
Subtotal	2	7	9	3
White				
13	0	1	1	0
14	0	13	13	4
15	7	11	18	6
16	8	18	26	8
17	11	16	27	9
18	0	1	1	0
Subtotal	26	60	86	28
Total	71	236	307	100

Admissions Profile for Second Quarter 2006 NCCDC Admittees.

Admissions	<u>Youth</u>			<u>Admissions</u>		
	Number	Percent	Cum. %	Number	Percent	Cum. %
Total	307	100%	100%	1,383	100%	100%
First admission	91	30%	30%	91	7%	7%
Multiple admissions	216	70%	70%	1,292	93%	93%
2 nd	51	17%	46%	102	7%	14%
3 rd	38	12%	59%	114	8%	22%
4 th	17	6%	64%	68	5%	27%
5 th	23	7%	72%	115	8%	35%
6 th	10	3%	75%	60	4%	40%
7 th	17	6%	80%	119	9%	48%
8 th	11	4%	84%	88	6%	55%
9 th	9	3%	87%	81	6%	61%
10 th	7	2%	89%	70	5%	66%
11 th	8	3%	92%	88	6%	72%
12 th	5	2%	93%	60	4%	76%
13 th	6	2%	95%	78	6%	82%
14 th	2	1%	96%	28	2%	84%
15 th	2	1%	97%	30	2%	86%
16 th	4	1%	98%	64	5%	91%
17 th	0	.	98%	0	.	91%
18 th	2	1%	99%	36	3%	93%
19 th	1	0%	99%	19	1%	95%
20 th	0	.	99%	0	.	95%
21 st	1	0%	99%	21	2%	96%
22 nd	0	.	99%	0	.	96%
23 rd	1	0%	100%	23	2%	98%
24 th	0	.	100%	0	.	98%
25 th	0	.	100%	0	.	98%
26 th	0	.	100%	0	.	98%
27 th	0	.	100%	0	.	98%
28 th	1	0%	100%	28	2%	100%

Note: First admission means that, heretofore, a juvenile had never been admitted to Secure Detention, Level III Residential, Level IV, Level V, or Division of Family Services (DFS) and Child Mental Health (CMH) programs that provide residential services. Included in the count of multiple admissions are those admitted to Secure Detention, Level III Residential, Level IV, Level V, and DFS and CMH programs that provide residential services which are classified by DSCYF as crisis bed; mental health; residential group care; treatment center; residential Interagency Collaborative Team; residential treatment, mental health; and residential treatment, substance abuse.

**Admission Profile by Dispositional
Level for Second Quarter 2006 NCCDC Admittees.**

Admissions	Number and percent of youth							
	Sec. Det.		L. V		L. IV		L. IIIR	
	N.	%	N.	%	N.	%	N.	%
Total	307	100	307	100	307	100	307	100
No prior admissions	111	36	213	69	203	66	141	46
Multiple admissions	196	64	94	31	104	34	166	54
2 nd	70	23	52	17	47	15	64	21
3 rd	42	14	23	7	22	7	40	13
4 th	27	9	12	4	21	7	26	8
5 th	16	5	3	1	6	2	17	6
6 th	17	6	3	1	4	1	9	3
7 th	9	3	0	.	1	0	6	2
8 th	10	3	0	.	2	1	2	1
9 th	3	1	0	.	0	.	1	0
10 th	0	.	0	.	0	.	0	.
11 th	1	0	0	.	0	.	0	.
12 th	1	0	1	0	0	.	1	0
13 th	0	.	0	.	1	0	0	.

Note: Included in the count of multiple admissions are those admitted to Secure Detention (Sec. Det.), Level III Residential (L. IIIR), Level IV, Level V, and Division of Family Services and Child Mental Health programs that provide residential services which are classified by DSCYF as crisis bed; mental health; residential group care; treatment center; residential Interagency Collaborative Team; residential treatment, mental health; and residential treatment, substance abuse.

Reading this table: This table shows that 64 percent of youth admitted to the New Castle County Detention Center during the second quarter of 2006 had prior admissions to secure detention, 31 percent to Level V, 34 percent to Level IV, and 54 percent to Level IIIR. Twenty-nine of the 111 youth without prior detention admissions had prior admissions to Levels IIIR, IV and/or V.

Leading Charge at Admission, Second Quarter 2006.

Detained felonies and misdemeanors, 10 Del.C. § 1007(a)(2)	
Arson in the first degree	1
Assault in a detention facility, causing injury	2
Assault in the second degree	3
Assault in the third degree	10
Burglary in the second degree	11
Burglary in the second degree, attempted	1
Burglary in the third degree	3
Escape in the second degree	3
Maintaining a vehicle for keeping controlled substances	1
Menacing, aggravated	3
Possession of a deadly weapon during the commission of a felony	14
Possession of a destructive weapon	3
Possession of a firearm during felony	6
Possession of a weapon in a safe school zone	2
Possession of burglar's tools	1
Possession with intent to deliver narcotics	12
Possession with intent to deliver non-narcotics	7
Rape in the fourth degree	1
Rape in the second degree	1
Receiving stolen property, felony	2
Reckless endangering in the first degree	1
Robbery in the first degree	25
Robbery in the first degree, attempted	1
Robbery in the second degree	6
Theft of a firearm	1
Theft, felony	1
Trafficking in cocaine from 10 to 50 grams	2
Subtotal	124

Leading Charge at Admission, Second Quarter 2006.

Failure to appear, 10 Del.C. § 1007(a)(3)

Failure to appear in court	23
Subtotal	23

Detained admissions not pursuant to 10 Del.C. § 1007

Breach of conditions of release, misdemeanor	1
Civil contempt, juvenile fails to pay fines	4
Criminal contempt	8
Criminal impersonation	2
Criminal mischief, unclassified misdemeanor, attempted	1
Escape in the third degree	8
Harassment	1
Loitering	1
Offensive touching	12
Possession of drug paraphernalia	1
Possession or use of narcotics	1
Reckless burning or exploding	1
Resisting arrest	2
Shoplifting, misdemeanor	1
Terroristic threatening, misdemeanor	7
Theft, misdemeanor	1
Unauthorized use of a motor vehicle	1
Subtotal	53

Administrative violations and holds

Administrative hold	2
Administrative hold, Aftercare revocation	3
Administrative hold, internal transfer	1
Subtotal	6

Leading Charge at Admission, Second Quarter 2006.

<u>Sentenced admissions pursuant to an adjudication</u>	
Abandonment of a child	1
Administrative hold, returned from a Level IV program	4
Arson in the first degree	1
Assault in the second degree	1
Conspiracy in the third degree	1
Criminal contempt	1
Criminal impersonation	1
Criminal trespassing in the second degree	1
Drug Court violation	3
Harassment	1
Indecent exposure in the second degree	1
Offensive touching	2
Possession with intent to deliver narcotics	1
Receiving stolen property, felony	1
Resisting arrest	2
Robbery in the first degree	2
Robbery in the second degree	1
Unauthorized use of a motor vehicle	1
Violation of probation	31
Subtotal	57
<u>Violation of probation pursuant to 11 Del.C. § 4334</u>	
Violation of probation	44
Subtotal	44
Total	307

Crime Category at Admission, Second Quarter 2006.

Category	Number	Percent
Violent felony	106	35
Violent misdemeanor	18	6
Non-violent felony	15	5
Non-violent misdemeanor	75	24
Unclassified misdemeanor	4	1
Unclassified violation	1	0
Drug Court violation	3	1
Probation violation	75	24
Administrative hold/Aftercare revocation	10	3
Total	307	100

While 75 youth were admitted solely for a violation of probation (VOP), another 48 had a VOP and an arrest for another crime. A total of 123 youth were charged with VOP.

Length of Stay on June 30, 2006.

LOS in intervals	Youth	Length of Stay		
	Number	Average	Median	Maximum
1 to 3 days	9	2	1	3
4 to 14 days	13	7	8	12
15 to 29 days	24	21	21	27
30 to 59 days	14	46	45	58
60 to 119 days	13	77	73	104
120 to 179 days	2	146	146	146
180 plus days	0	.	.	.
Summary	75	34	22	146

Legal Status by Average LOS at Snapshot on June 30, 2006.

	Detained		Sentenced		Total	
	No.	LOS	No.	LOS	No.	LOS
Family Court	41	20	17	27	58	22
30 days or less	31	11	13	18	44	13
31 days or more	10	48	4	59	14	52
Superior Court	17	74	0	.	17	74
120 days or less	15	65	0	.	15	65
121 days or more	2	146	0	.	2	146
Total	58	36	17	27	75	34

Youth's Involvement on June 30, 2006.

Detained	Number	LOS in days
Aftercare	16	40
Child Mental Health	4	54
Division of Family Services	1	44
Serious Juvenile Offender and Comprehensive Aftercare Program	18	40
Family Court detainees	41	20
Superior Court detainees	17	74
<hr/>		
Sentenced		
Aftercare	7	27
Child Mental Health	2	25
Serious Juvenile Offender and Comprehensive Aftercare Program	9	25
Family Court	17	27

Population Demographics on June 30, 2006.

Race/ethnicity and age	<u>Gender</u>		<u>Total</u>	
	Female	Male	Number	Percent
African American				
12	0	1	1	1
13	0	1	1	1
14	3	5	8	11
15	0	12	12	16
16	1	17	18	24
17	2	17	19	25
Subtotal	6	53	59	79
Hispanic				
15	0	1	1	1
Subtotal	0	1	1	1
White				
14	0	5	5	7
15	0	3	3	4
16	0	2	2	3
17	3	2	5	7
Subtotal	3	12	15	20
Total	9	66	75	100

Releases, Second Quarter 2006.

To whom released/program	Number	Percent	LOS in days	
			Mean	Max.
Releases to the community				
Community Services, Camelot Non-secure Detention	35	11	9	108
Community Services, Peoples Place II	1	0	6	6
Community Services, Peoples Place II, Non-secure Det.	18	6	14	178
Community Services, Probation	3	1	154	318
Community Services, Project Stay Free	1	0	3	3
Community Services, Project Stay Free Day Treatment	1	0	25	25
Community Services, Project Stay Free E.M.	13	4	67	444
Community Services, Project Stay Free ICCP	2	1	13	19
Community Services, Providence Service Corporation	2	1	2	2
Community Services, VisionQuest Community Based	2	1	2	2
Division of Family Services	5	2	7	25
Guardian	1	0	4	4
Parent	77	24	23	162
Relative	6	2	45	128
Releases to the community subtotal	167	53	24	444
Releases to a secure placement				
Child Mental Health, Middletown Manor RTC	1	0	54	54
Child Mental Health, Riverside Treatment Services	1	0	38	38
Community Services, Chamberlain Academy General	1	0	41	41
Community Services, Clarinda Academy	1	0	2	2
Community Services, Cove PREP	1	0	35	35
Community Services, Glen Mills Schools	7	2	84	294
Community Services, Mountain Manor Treatment Center	3	1	9	22
Community Services, Southwest Indiana	3	1	23	44
Community Services, Springfield Academy	2	1	57	90
Community Services, Summit Academy	3	1	36	71
Community Services, Today, Inc. Short Term Drug Abuse	2	1	9	16
Community Services, VisionQuest Boot Camp	6	2	30	78
Community Services, Youth Services Agency	34	11	24	128
Department of Correction	2	1	74	143
Department of Correction, YCOP	9	3	180	280
New Jersey authorities	2	1	36	52
YRS, Ferris School for Boys	23	7	36	183
YRS, Grace Cottage	13	4	7	28
YRS, Mowlds Cottage	2	1	12	22
YRS, New Castle County Detention Center	3	1	15	40
YRS, Snowden Cottage	20	6	30	85
YRS, Stevenson House Detention Center	9	3	51	184
Releases to a secure placement subtotal	148	47	40	294
Total releases	315	100	32	444

Legal Status by Average LOS at Release, Second Quarter 2006.

	<u>Detained</u>		<u>Sentenced</u>		<u>Total</u>	
	No.	LOS	No.	LOS	No.	LOS
Family Court	117	16	177	29	294	23
30 days or less	108	5	126	15	234	10
31 days or more	9	145	51	63	60	76
Superior Court	11	114	10	187	21	149
120 days or less	5	51	2	105	7	67
121 days or more	6	167	8	208	14	190
Total	128	24	187	37	315	32

Crime Category at Release, Second Quarter 2006.

Category	Number	Percent	<u>LOS in days</u>	
			Mean	Maximum
Violent felony	97	31	55	444
Violent misdemeanor	24	8	17	92
Non-violent felony	28	9	38	162
Non-violent misdemeanor	70	22	14	85
Traffic misdemeanor	1	0	20	20
Unclassified misdemeanor	3	1	23	49
Unclassified violation	1	0	2	2
Drug Court violation	3	1	8	19
Probation violation	85	27	24	218
Administrative hold/Aftercare revocation	3	1	15	29
Total	315	100	32	444