



**State of Delaware
Executive Department
Office of Management and Budget**

To: John Frazer
From: Jorge Rodríguez-Labarca
Date: July 20, 2009
Subject: Fourth Quarter 2008 Mowlds Cottage Status Report

Admissions: There were 69 admissions during the fourth quarter of 2008.

Admission demographics: Forty-eight African Americans, 18 whites, and three Hispanics were admitted during the fourth quarter.

Leading charges at admission: The most frequent leading charges at admission for the fourth quarter were: violation of probation, 16; administrative hold, 12; and burglary in the third degree and robbery in the second degree, 3. Twenty-two percent, or 15 youth, were admitted for violent felonies.

Length of stay: On June 30, there were 19 Family Court youth at Mowlds Cottage with an average length of stay (LOS) of 21 days, a median LOS of 21 days, and a maximum LOS of 49 days.

Snapshot demographics: Of the 19 youth at Mowlds Cottage, there were thirteen African Americans, five whites and one Hispanic.

Youth's status: Nineteen youth were serving indefinite Family Court sentences.

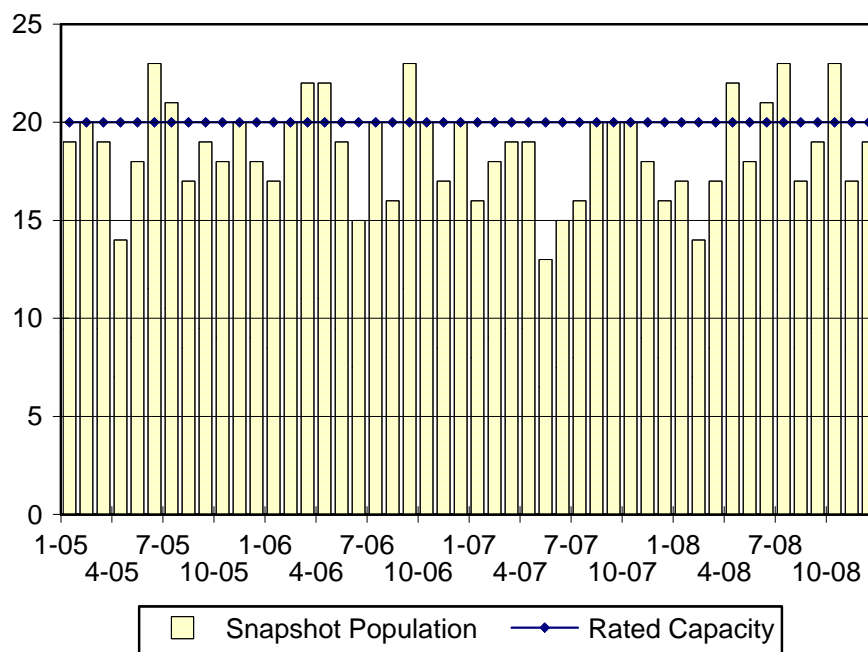
Releases: 69 youth were released during the fourth quarter of 2008 with an average LOS of 27 days and a maximum LOS of 57 days.



**Budget Development, Planning and Administration
Statistical Analysis Center**

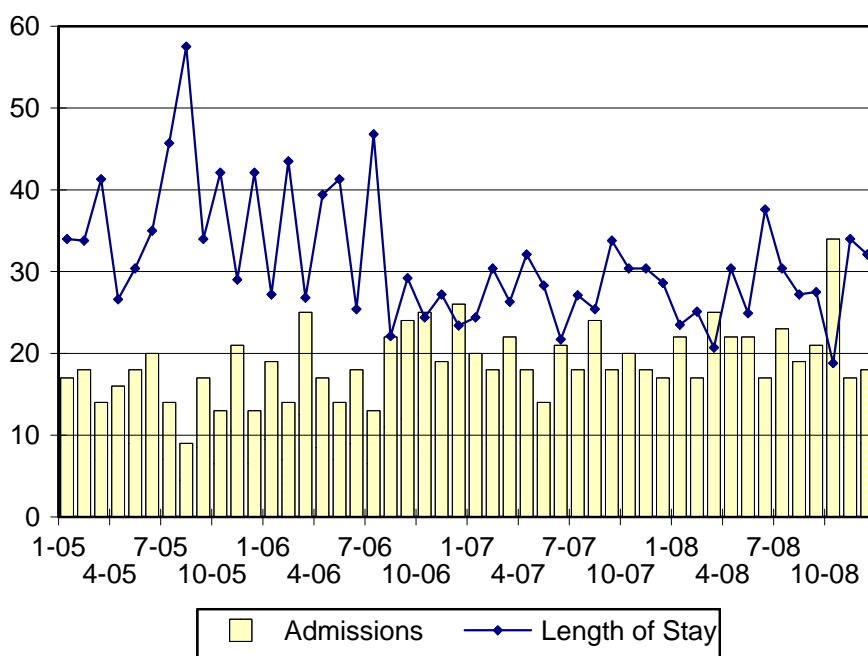
410 Federal Street • Suite 6 • Dover, DE 19901
Phone: (302) 739-4626 • Fax: (302) 739-4630 • www.omb.delaware.gov

Mowlds Cottage Snapshot Population and Rated Capacity



Snapshot populations are taken at the end of any given month.

Mowlds Cottage Admissions and Time Served



Length of Stay: Average time in days at the Mowlds for youth given monthly admissions and snapshot populations.

Admissions, Fourth Quarter 2008.

Month	Number	Percent
October	34	49
November	17	25
December	18	26
Total	69	100

Admission Demographics, Fourth Quarter 2008.

Race/ethnicity and age	Total	
	Number	Percent
African American		
13	1	1
14	2	3
15	7	10
16	16	23
17	18	26
18	4	6
Subtotal	48	70
Hispanic		
15	2	3
18	1	1
Subtotal	3	4
White		
16	5	7
17	5	7
18	8	12
Subtotal	18	26
Total	69	100

Admissions Profile for Fourth Quarter 2008 Mowlds Cottage Admittees

Admissions	<u>Youth</u>			<u>Admissions</u>		
	Number	Percent	Cum. %	Number	Percent	Cum. %
Total	69	100	100	548	100	100
First admission	1	1	1	1	0	0
Multiple admissions	68	99	99	547	100	100
2 nd	2	3	4	4	1	1
3 rd	10	14	19	30	5	6
4 th	11	16	35	44	8	14
5 th	8	12	46	40	7	22
6 th	1	1	48	6	1	23
7 th	4	6	54	28	5	28
8 th	6	9	62	48	9	37
9 th	5	7	70	45	8	45
10 th	3	4	74	30	5	50
11 th	3	4	78	33	6	56
12 th	1	1	80	12	2	59
13 th	5	7	87	65	12	70
14 th	3	4	91	42	8	78
15 th	0	.	91	0	.	78
16 th	1	1	93	16	3	81
17 th	0	.	93	0	.	81
18 th	2	3	96	36	7	88
19 th	0	.	96	0	.	88
20 th	1	1	97	20	4	91
21 st	0	.	97	0	.	91
22 nd	0	.	97	0	.	91
23 rd	1	1	99	23	4	95
24 th	0	.	99	0	.	95
25 th	1	1	100	25	5	100

Note: First admission means that, heretofore, a juvenile had never been admitted to Secure Detention, residential Level III, Level IV, Level V, or Division of Family Services (DFS) and Child Mental Health (CMH) programs that provide residential services. Included in the count of multiple admissions are those admitted to secure detention, residential Level III, Level IV, Level V, and DFS and CMH programs that provide residential services which are classified by DSCYF as crisis bed; mental health; residential group care; treatment center; residential Interagency Collaborative Team; residential treatment, mental health; and residential treatment, substance abuse.

**Admission Profile by Dispositional
Level for Fourth Quarter 2008 Mowlds Cottage Admittees**

Admissions	Number and percent of youth							
	<u>Sec. Det.</u>		<u>L. V</u>		<u>L. IV</u>		<u>L. III</u>	
	N.	%	N.	%	N.	%	N.	%
Total	69	100	69	100	69	100	69	100
No prior admissions	1	1	26	38	22	32	12	17
Multiple admissions	68	99	43	62	47	68	57	82
2 nd	14	20	33	48	11	16	13	19
3 rd	17	25	3	4	10	14	11	16
4 th	8	12	4	6	7	10	14	20
5 th	15	22	3	4	6	9	6	9
6 th	3	4	0	.	1	1	2	3
7 th	7	10	0	.	4	6	2	3
8 th	3	4	0	.	6	9	2	3
9 th	0	.	0	.	0	.	2	3
10 th	1	1	0	.	1	1	1	1
11 th	0	.	0	.	0	.	0	.
12 th	0	.	0	.	0	.	2	3
13 th	0	.	0	.	0	.	1	1
14 th	0	.	0	.	1	1	0	.
15 th	0	.	0	.	0	.	1	1

Note: Included in the count of multiple admissions are those admitted to Secure Detention (Sec. Det.), Level III, Level IV, Level V, and Division of Family Services and Child Mental Health programs that provide residential services which are classified by DSCYF as crisis bed; mental health; residential group care; treatment center; residential Interagency Collaborative Team; residential treatment, mental health; and residential treatment, substance abuse.

Reading this table: This table shows that 99 percent of youth admitted to Mowlds Cottage during the fourth quarter of 2008 had prior admissions to secure detention, 62 percent to Level V, 68 percent to Level IV, and 82 percent to Level III. All youth without prior Level IV admissions had prior admissions to secure detention, Levels III, and/or V.

Leading Charge at Admission, Fourth Quarter 2008.

Sentenced admissions	Total	<u>Race</u>	
		White	Minority
Administrative hold, Aftercare revocation	2	0	2
Administrative hold	12	1	11
Arson in the third degree	1	1	0
Assault in the second degree	2	2	0
Assault in the third degree	2	2	0
Burglary in the first degree	2	0	2
Burglary in the second degree	2	1	1
Burglary in the third degree	3	2	1
Carrying a concealed dangerous instrument	1	0	1
Conspiracy in the second degree	1	0	1
Conspiracy in the third degree	1	0	1
Criminal mischief, class G felony	1	1	0
Criminal trespassing in the first degree	1	1	0
Escape in the third degree	1	0	1
Failure to register as a sex offender	1	0	1
Menacing, aggravated	2	0	2
Offensive touching, attempted	1	0	1
Possession of a deadly weapon by person prohibited, firearm	2	0	2
Possession of a deadly weapon during the commission of a felony	1	0	1
Possession of a weapon in a safe school zone	1	0	1
Possession of drug paraphernalia	2	1	1
Possession or use of narcotics	1	0	1
Resisting arrest	1	0	1
Robbery in the first degree	2	1	1
Robbery in the second degree	3	0	3
Terroristic threatening, misdemeanor	2	1	1
Theft of a motor vehicle	1	0	1
Trafficking in cocaine from 10 to 50 grams	1	1	0
Violation of probation	16	3	13
Total	69	18	51

Crime Category at Admission, Fourth Quarter 2008.

Category	Count	Percent
Violent felony	15	22
Violent misdemeanor	6	9
Non-violent felony	11	16
Non-violent misdemeanor	7	10
Probation violation	16	23
Administrative hold/Aftercare revocation	14	20
Total	69	100

Length of Stay on June 30, 2008.

LOS in intervals	<u>Youth</u>	<u>Length of Stay</u>		
	Number	Average	Median	Maximum
1 to 3 days	0	.	.	.
4 to 14 days	9	10	14	14
15 to 29 days	6	24	24	28
30 to 59 days	4	39	39	49
60 to 119 days	0	.	.	.
120 to 179 days	0	.	.	.
180 plus days	0	.	.	.
Summary	19	21	21	49

Legal Status by Average LOS at Snapshot on June 30, 2008.

	<u>Administrative Hold</u>		<u>Sentenced</u>		<u>Total</u>	
	No.	LOS	No.	LOS	No.	LOS
Family Court	0	.	19	21	19	21
30 days or less	0	.	16	17	16	17
31 days or more	0	.	3	42	3	42
Superior Court	0	.	0	.	0	.
120 days or less	0	.	0	.	0	.
121 days or more	0	.	0	.	0	.
Total	0	.	19	21	19	21

Population Demographics on June 30, 2008.

Race/ethnicity and age	Total	
	Number	Percent
African American		
14	1	5
16	4	21
17	6	32
18	2	11
Subtotal	13	68
Hispanic		
18	1	5
Subtotal	1	5
White		
16	2	11
17	1	5
18	2	11
Subtotal	5	26
Total	19	100

Youth's Involvement on December 31, 2008.

Sentenced	Number	LOS in days
Division of Child Mental Health	1	14
Division of Family Services	2	18
Aftercare	15	21
Probation Case	1	6
Serious Juvenile Offender and Comprehensive Aftercare Program	0	.
Indefinite sentences	19	21

Releases, Fourth Quarter 2008.

To whom released/program	Number	Percent	LOS in days	
			Mean	Maximum
AWOL	1	1	26	26
Community Services, Aftercare	5	6	34	36
Community Services, Project Stay Free day treatment	1	1	36	36
Community Services, Project Stay Free ICCP	5	7	12	36
Community Services, VisionQuest FCIM	1	1	36	36
Division of Family Services	1	1	37	37
Guardian	1	1	29	29
Parent	45	65	29	57
Community Services, Project Stay Free MST	1	1	34	34
Relative	6	9	19	36
YRS New Castle County Detention Center	2	3	36	43
Total	69	100	27	57

Legal Status by Average LOS at Release, Fourth Quarter 2008.

	Administrative Hold		Sentenced		Total	
	No.	LOS	No.	LOS	No.	LOS
Family Court	15	9	54	33	69	27
30 days or less	14	6	19	24	33	17
31 days or more	1	43	35	37	36	37
Superior Court	0	.	0	.	0	.
120 days or less	0	.	0	.	0	.
121 days or more	0	.	0	.	0	.
Total	15	9	54	33	69	27

Crime Category at Release, Fourth Quarter 2008.

Category	Number	Percent	LOS in days	
			Mean	Maximum
Violent felony	11	16	31	36
Violent misdemeanor	4	6	31	44
Non-violent felony	12	17	31	36
Non-violent misdemeanor	8	12	32	36
Probation violation	19	28	36	57
Administrative hold/Aftercare revocation	15	22	7	43
Total	69	100	27	57