



STATE OF DELAWARE  
EXECUTIVE DEPARTMENT  
OFFICE OF MANAGEMENT AND BUDGET

To: John Frazer  
From: Jorge Rodríguez-Labarca  
Date: March 5, 2008  
Subject: Fourth Quarter 2007 Mowlds Cottage Status Report

---

*Admissions:* There were 55 admissions during the fourth quarter of 2007.

*Admission demographics:* Thirty-nine African Americans and 16 whites were admitted during the fourth quarter.

*Leading charges at admission:* The most frequent leading charges at admission for the fourth quarter were: violation of probation, 14; administrative hold, 12; and, possession with intent to deliver narcotics, 4. Twenty-five percent, or 14 youth, were admitted for violent felonies.

*Length of stay:* On December 31, there were 17 Family Court youth at Mowlds Cottage with an average length of stay (LOS) of 25 days, a median LOS of 19 days, and a maximum LOS of 68 days.

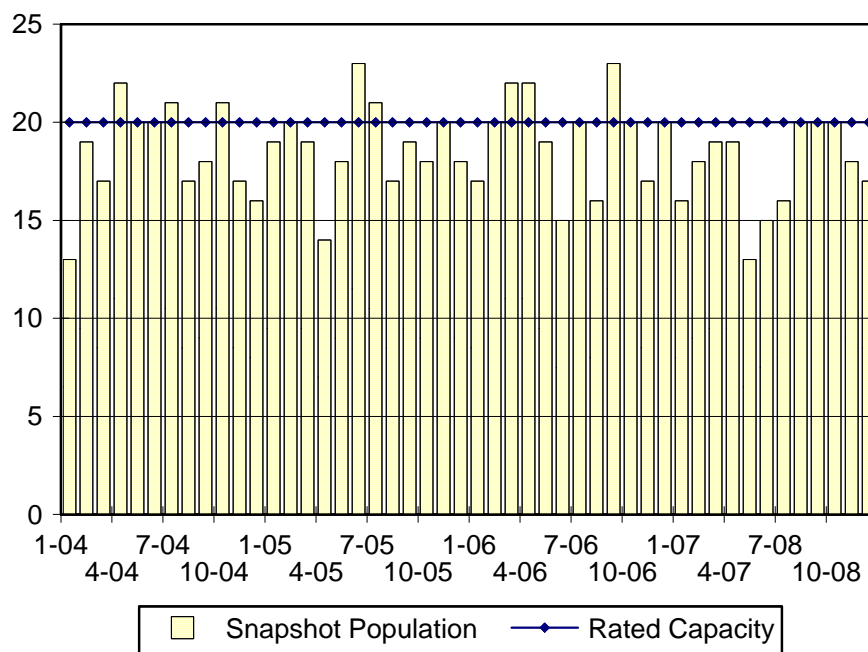
*Snapshot demographics:* Of the 17 youth at Mowlds Cottage, there were fourteen African Americans and three whites.

*Youth's status:* Seventeen youth were serving indefinite Family Court sentences.

*Releases:* 55 youth were released during the fourth quarter of 2007 with an average LOS of 32 days and a maximum LOS of 91 days.

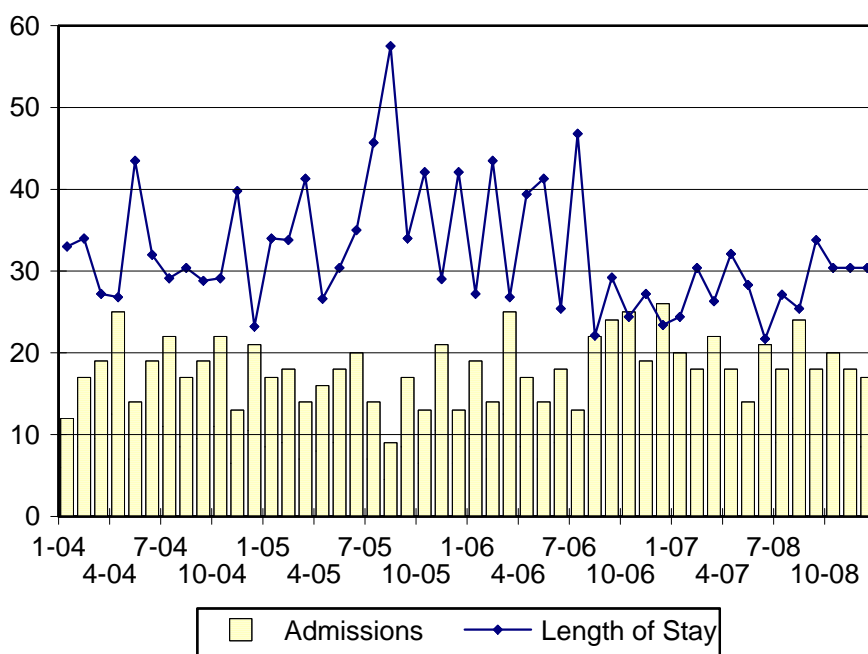


### Mowlds Cottage Snapshot Population and Rated Capacity



Snapshot populations are taken at the end of any given month.

### Mowlds Cottage Admissions and Time Served



Length of Stay: Average time in days at the Mowlds for youth given monthly admissions and snapshot populations.

### Admissions, Fourth Quarter 2007.

Month	Number	Percent
October	20	36
November	18	33
December	17	31
Total	55	100

### Admission Demographics, Fourth Quarter 2007.

Race/ethnicity and age	Total	
	Number	Percent
African American		
13	1	2
14	2	4
15	4	7
16	16	29
17	9	16
18	7	13
Subtotal	39	71
White		
15	1	2
16	5	9
17	5	9
18	5	9
Subtotal	16	29
Total	55	100

### Admissions Profile for Fourth Quarter 2007 Mowlds Cottage Admittees

Admissions	<u>Youth</u>			<u>Admissions</u>		
	Number	Percent	Cum. %	Number	Percent	Cum. %
Total	55	100	100	433	100	100
First admission	0	.	.	0	.	.
Multiple admissions	55	100	100	433	100	100
2 <sup>nd</sup>	1	2	2	2	0	0
3 <sup>rd</sup>	6	11	13	18	4	5
4 <sup>th</sup>	10	18	31	40	9	14
5 <sup>th</sup>	2	4	35	10	2	16
6 <sup>th</sup>	9	16	51	54	12	29
7 <sup>th</sup>	2	4	55	14	3	32
8 <sup>th</sup>	4	7	62	32	7	39
9 <sup>th</sup>	2	4	65	18	4	43
10 <sup>th</sup>	5	9	75	50	12	55
11 <sup>th</sup>	2	4	78	22	5	60
12 <sup>th</sup>	4	7	85	48	11	71
13 <sup>th</sup>	0	.	85	0	.	71
14 <sup>th</sup>	2	4	89	28	6	78
15 <sup>th</sup>	3	5	95	45	10	88
16 <sup>th</sup>	1	2	96	16	4	92
17 <sup>th</sup>	0	.	96	0	.	92
18 <sup>th</sup>	2	4	100	36	8	100

Note: First admission means that, heretofore, a juvenile had never been admitted to Secure Detention, Level III Residential, Level IV, Level V, or Division of Family Services (DFS) and Child Mental Health (CMH) programs that provide residential services. Included in the count of multiple admissions are those admitted to secure detention, Level III Residential, Level IV, Level V, and DFS and CMH programs that provide residential services which are classified by DSCYF as crisis bed; mental health; residential group care; treatment center; residential Interagency Collaborative Team; residential treatment, mental health; and residential treatment, substance abuse.

### Admission Profile by Dispositional Level for Fourth Quarter 2007 Mowlds Cottage Admittees

Admissions	Number and percent of youth							
	Sec. Det.		L. V		L. IV		L. IIIR	
	N.	%	N.	%	N.	%	N.	%
Total	55	100	55	100	55	100	55	100
No prior admissions	11	20	6	11	11	20	11	20
Multiple admissions	44	80	49	89	44	80	44	80
2 <sup>nd</sup>	9	16	12	22	21	38	13	24
3 <sup>rd</sup>	12	22	15	27	7	13	10	18
4 <sup>th</sup>	8	15	11	20	10	18	8	15
5 <sup>th</sup>	5	9	5	9	2	4	5	9
6 <sup>th</sup>	4	7	5	9	2	4	4	7
7 <sup>th</sup>	4	7	0	.	2	4	2	4
8 <sup>th</sup>	2	4	1	2	0	.	2	4

Note: Included in the count of multiple admissions are those admitted to Secure Detention (Sec. Det.), Level III Residential (L. IIIR), Level IV, Level V, and Division of Family Services and Child Mental Health programs that provide residential services which are classified by DSCYF as crisis bed; mental health; residential group care; treatment center; residential Interagency Collaborative Team; residential treatment, mental health; and residential treatment, substance abuse.

Reading this table: This table shows that 80 percent of youth admitted to Mowlds Cottage during the fourth quarter of 2007 had prior admissions to secure detention, 89 percent to Level V, 80 percent to Level IV, and 80 percent to Level IIIR. All youth without prior Level IV admissions had prior admissions to secure detention, Levels IIIR, and/or V.

Leading Charge at Admission, Fourth Quarter 2007.

Sentenced admissions	Total	<u>Race</u>	
		White	Minority
Administrative hold	12	5	7
Assault in the third degree	1	1	0
Burglary in the first degree	1	1	0
Burglary in the second degree	2	1	1
Burglary in the second degree, attempted	1	0	1
Conspiracy in the second degree	2	1	1
Criminal impersonation	1	0	1
Distribution of a controlled substance within 300 feet of a park	1	0	1
Possession of a firearm by a person prohibited	1	0	1
Possession of a deadly weapon during the commission of a felony	1	0	1
Possession of a weapon in a safe school zone	1	0	1
Possession with intent to deliver narcotics	4	0	4
Receiving a stolen firearm	1	0	1
Receiving stolen property, felony	2	0	2
Receiving stolen property, misdemeanor	3	0	3
Robbery in the first degree	1	0	1
Robbery in the second degree	2	0	2
Theft, felony	2	0	2
Theft, misdemeanor	1	0	1
Unlawful sexual contact in the second degree	1	0	1
Violation of probation	14	7	7
Total	55	16	39

### Crime Category at Admission, Fourth Quarter 2007.

Category	Count	Percent
Violent felony	14	25
Violent misdemeanor	1	2
Non-violent felony	9	16
Non-violent misdemeanor	5	9
Probation violation	14	25
Administrative hold/Aftercare revocation	12	22
Total	55	100

### Length of Stay on December 31, 2007.

LOS in intervals	<u>Youth</u>	<u>Length of Stay</u>		
	Number	Average	Median	Maximum
1 to 3 days	0	.	.	.
4 to 14 days	5	11	12	13
15 to 29 days	7	22	19	26
30 to 59 days	4	39	41	41
60 to 119 days	1	68	68	68
120 to 179 days	0	.	.	.
180 plus days	0	.	.	.
Summary	17	25	19	68

### Legal Status by Average LOS at Snapshot on December 31, 2007.

	<u>Administrative Hold</u>		<u>Sentenced</u>		<u>Total</u>	
	No.	LOS	No.	LOS	No.	LOS
Family Court	0	.	17	25	17	25
30 days or less	0	.	12	17	12	17
31 days or more	0	.	5	45	5	45
Superior Court	0	.	0	.	0	.
120 days or less	0	.	0	.	0	.
121 days or more	0	.	0	.	0	.
Total	0	.	17	25	17	25

### Population Demographics on December 31, 2007.

Race/ethnicity and age	<u>Total</u>	
	Number	Percent
African American		
16	6	35
17	4	24
18	4	24
Subtotal	14	82
White		
16	1	6
18	2	12
Subtotal	3	18
Total	17	100

### Youth's Involvement on December 31, 2007.

Administrative hold	Number	LOS in days
Aftercare	0	.
Sentenced		
Aftercare	2	27
Division of Family Services	1	41
Serious Juvenile Offender and Comprehensive Aftercare Program	4	25
Indefinite sentences	17	25
Superior Court	0	.



## Releases, Fourth Quarter 2007.

To whom released/program	Number	Percent	<u>LOS in days</u>	
			Mean	Maximum
Community Services, Aftercare	2	4	45	58
Community Services, P.C.S. Multisystemic T.	1	2	91	91
Community Services, Hennepin County Home School	1	2	4	4
Parent	51	93	31	70
Total	55	100	32	91

## Legal Status by Average LOS at Release, Fourth Quarter 2007.

	<u>Administrative Hold</u>		<u>Sentenced</u>		<u>Total</u>	
	No.	LOS	No.	LOS	No.	LOS
Family Court	13	6	42	40	55	32
30 days or less	12	3	7	27	19	12
31 days or more	1	46	35	42	36	42
Superior Court	0	.	0	.	0	.
120 days or less	0	.	0	.	0	.
121 days or more	0	.	0	.	0	.
Total	13	6	42	40	55	32

## Crime Category at Release, Fourth Quarter 2007.

Category	Number	Percent	<u>LOS in days</u>	
			Mean	Maximum
Violent felony	16	29	42	58
Non-violent felony	1	2	28	28
Non-violent misdemeanor	6	11	36	43
Probation violation	7	13	36	43
Administrative hold/Aftercare revocation	12	22	41	91
Drug Court violation	13	24	6	46
Total	55	100	32	91