



STATE OF DELAWARE
EXECUTIVE DEPARTMENT
OFFICE OF MANAGEMENT AND BUDGET

To: John Frazer
From: Jorge Rodríguez-Labarca
Date: October 3, 2007
Subject: First Quarter 2007 Mowlds Cottage Status Report

Admissions: There were 60 admissions during the first quarter of 2007.

Admission demographics: Thirty-seven African Americans and 23 whites were admitted during the first quarter.

Leading charges at admission: The most frequent leading charges at admission for the first quarter were: violation of probation, 18, and administrative hold, 15. Twenty-three percent, or 14 youth, were admitted for violent felonies.

Length of stay: On March 31, there were 19 Family Court youth at Mowlds Cottage with an average length of stay (LOS) of 17 days, a median LOS of 17 days, and a maximum LOS of 38 days.

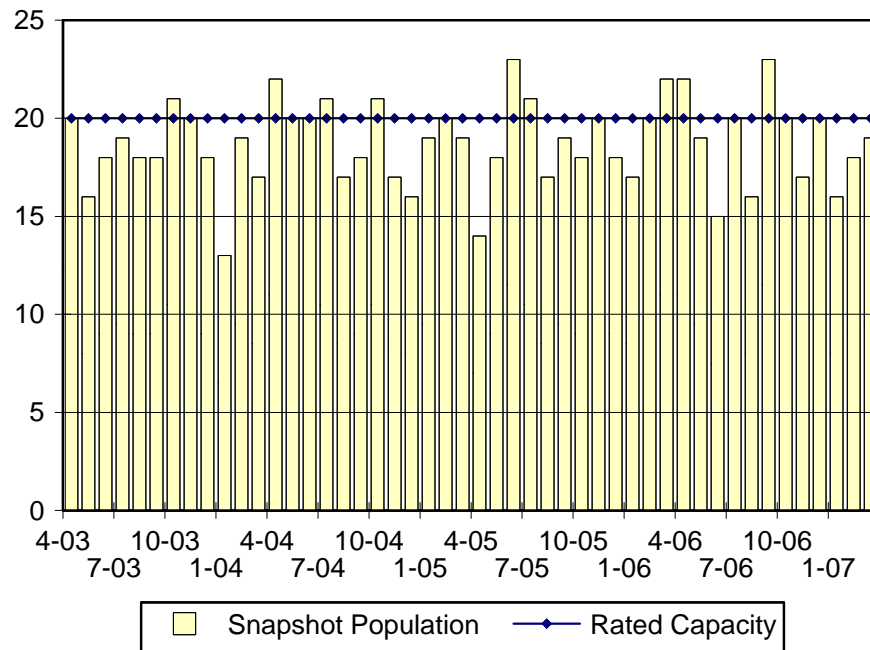
Snapshot demographics: Of the 19 youth at Mowlds Cottage, there were 13 African Americans and six whites.

Youth's status: Eighteen youth were serving indefinite Family Court sentences while one youth was serving administrative sanction.

Releases: 60 youth were released during the first quarter of 2007 with an average LOS of 27 days and a maximum LOS of 73 days.

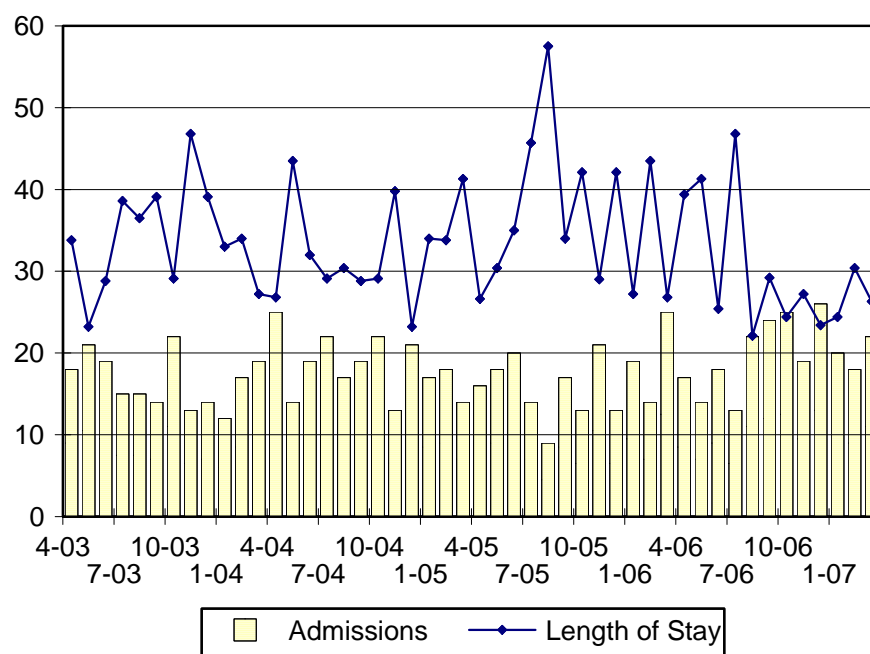


Mowlds Cottage Snapshot Population and Rated Capacity



Snapshot populations are taken at the end of any given month.

Mowlds Cottage Admissions and Time Served



Length of Stay: Average time in days at the Mowlds for youth given monthly admissions and snapshot populations.

Admissions, First Quarter 2007.

| Month | Number | Percent |
|----------|--------|---------|
| January | 20 | 33 |
| February | 18 | 30 |
| March | 22 | 37 |
| Total | 60 | 100 |

Admission Demographics, First Quarter 2007.

| Race/ethnicity and age | Total | |
|------------------------|--------|---------|
| | Number | Percent |
| African American | | |
| 12 | 1 | 2 |
| 13 | 1 | 2 |
| 14 | 1 | 2 |
| 15 | 3 | 5 |
| 16 | 13 | 22 |
| 17 | 13 | 22 |
| 18 | 5 | 8 |
| Subtotal | 37 | 62 |
| White | | |
| 14 | 1 | 2 |
| 15 | 1 | 2 |
| 16 | 7 | 12 |
| 17 | 11 | 18 |
| 18 | 3 | 5 |
| Subtotal | 23 | 38 |
| Total | 60 | 100 |

Admissions Profile for First Quarter 2007 Mowlds Cottage Admittees

| Admissions | <u>Youth</u> | | | <u>Admissions</u> | | |
|---------------------|--------------|---------|--------|-------------------|---------|--------|
| | Number | Percent | Cum. % | Number | Percent | Cum. % |
| Total | 60 | 100 | 100 | 252 | 100 | 100 |
| First admission | 7 | 12 | 12 | 7 | 3 | 3 |
| Multiple admissions | 53 | 88 | 88 | 245 | 97 | 97 |
| 2 nd | 12 | 20 | 32 | 24 | 10 | 12 |
| 3 rd | 11 | 18 | 50 | 33 | 13 | 25 |
| 4 th | 8 | 13 | 63 | 32 | 13 | 38 |
| 5 th | 7 | 12 | 75 | 35 | 14 | 52 |
| 6 th | 2 | 3 | 78 | 12 | 5 | 57 |
| 7 th | 5 | 8 | 87 | 35 | 14 | 71 |
| 8 th | 3 | 5 | 92 | 24 | 10 | 80 |
| 9 th | 3 | 5 | 97 | 27 | 11 | 91 |
| 10 th | 1 | 2 | 98 | 10 | 4 | 95 |
| 11 th | 0 | . | 98 | 0 | . | 95 |
| 12 th | 0 | . | 98 | 0 | . | 95 |
| 13 th | 1 | 2 | 100 | 13 | 5 | 100 |

Note: First admission means that, heretofore, a juvenile had never been admitted to Secure Detention, Level III Residential, Level IV, Level V, or Division of Family Services (DFS) and Child Mental Health (CMH) programs that provide residential services. Included in the count of multiple admissions are those admitted to secure detention, Level III Residential, Level IV, Level V, and DFS and CMH programs that provide residential services which are classified by DSCYF as crisis bed; mental health; residential group care; treatment center; residential Interagency Collaborative Team; residential treatment, mental health; and residential treatment, substance abuse.

Admission Profile by Dispositional Level for First Quarter 2007 Mowlds Cottage Admittees

| Admissions | Number and percent of youth | | | | | | | |
|---------------------|-----------------------------|-----|------|-----|-------|-----|---------|-----|
| | Sec. Det. | | L. V | | L. IV | | L. IIIR | |
| | N. | % | N. | % | N. | % | N. | % |
| Total | 60 | 100 | 60 | 100 | 60 | 100 | 60 | 100 |
| No prior admissions | 7 | 12 | 5 | 8 | 12 | 20 | 8 | 13 |
| Multiple admissions | 53 | 88 | 55 | 92 | 48 | 80 | 52 | 87 |
| 2 nd | 12 | 20 | 18 | 30 | 17 | 28 | 13 | 22 |
| 3 rd | 11 | 18 | 18 | 30 | 11 | 18 | 9 | 15 |
| 4 th | 8 | 13 | 11 | 18 | 9 | 15 | 10 | 17 |
| 5 th | 7 | 12 | 5 | 8 | 8 | 13 | 2 | 3 |
| 6 th | 2 | 3 | 3 | 5 | 2 | 3 | 4 | 7 |
| 7 th | 5 | 8 | 0 | . | 0 | . | 4 | 7 |
| 8 th | 3 | 5 | 0 | . | 0 | . | 6 | 10 |
| 9 th | 3 | 5 | 0 | . | 0 | . | 1 | 2 |
| 10 th | 1 | 2 | 0 | . | 0 | . | 0 | . |
| 11 th | 0 | . | 0 | . | 0 | . | 2 | 3 |
| 12 th | 1 | 2 | 0 | . | 1 | 2 | 1 | 2 |

Note: Included in the count of multiple admissions are those admitted to Secure Detention (Sec. Det.), Level III Residential (L. IIIR), Level IV, Level V, and Division of Family Services and Child Mental Health programs that provide residential services which are classified by DSCYF as crisis bed; mental health; residential group care; treatment center; residential Interagency Collaborative Team; residential treatment, mental health; and residential treatment, substance abuse.

Reading this table: This table shows that 88 percent of youth admitted to Mowlds Cottage during the first quarter of 2007 had prior admissions to secure detention, 92 percent to Level V, 80 percent to Level IV, and 87 percent to Level IIIR. All youth without prior Level IV admissions had prior admissions to secure detention, Levels IIIR, and/or V.

Leading Charge at Admission, First Quarter 2007.

| Sentenced admissions | Total | <u>Race</u> | |
|---|-------|-------------|----------|
| | | White | Minority |
| Administrative hold, Aftercare revocation | 1 | 0 | 1 |
| Administrative hold | 15 | 6 | 9 |
| Assault in a detention facility causing serious injury | 1 | 0 | 1 |
| Burglary in the second degree | 3 | 3 | 0 |
| Criminal contempt | 1 | 1 | 0 |
| Escape in the third degree | 2 | 0 | 2 |
| Forgery in the second degree | 1 | 1 | 0 |
| Menacing | 1 | 1 | 0 |
| Menacing, aggravated | 1 | 0 | 1 |
| Possession of a deadly weapon by person prohibited, firearm | 1 | 0 | 1 |
| Possession of a firearm during the commission of a felony | 1 | 0 | 1 |
| Possession of burglary tools | 1 | 1 | 0 |
| Possession of drug paraphernalia | 1 | 0 | 1 |
| Possession or use of a non-narcotic | 1 | 0 | 1 |
| Possession with intent to deliver narcotics | 3 | 0 | 3 |
| Receiving stolen property, felony | 1 | 0 | 1 |
| Receiving stolen property, misdemeanor | 1 | 1 | 0 |
| Robbery in the first degree | 3 | 1 | 2 |
| Robbery in the first degree, attempted | 1 | 1 | 0 |
| Robbery in the second degree | 1 | 1 | 0 |
| Theft, felony | 1 | 0 | 1 |
| Violation of probation | 18 | 6 | 12 |
| Total | 60 | 23 | 37 |

Crime Category at Admission, First Quarter 2007.

| Category | Count | Percent |
|--|-------|---------|
| Violent felony | 14 | 23 |
| Non-violent felony | 5 | 8 |
| Non-violent misdemeanor | 7 | 12 |
| Probation violation | 18 | 30 |
| Administrative hold/Aftercare revocation | 16 | 27 |
| Total | 60 | 100 |

Length of Stay on March 31, 2007.

| LOS in intervals | Youth | Length of Stay | | |
|------------------|--------|----------------|--------|---------|
| | Number | Average | Median | Maximum |
| 1 to 3 days | 3 | 3 | 3 | 3 |
| 4 to 14 days | 5 | 9 | 10 | 13 |
| 15 to 29 days | 9 | 22 | 23 | 26 |
| 30 to 59 days | 2 | 38 | 38 | 38 |
| 60 to 119 days | 0 | . | . | . |
| 120 to 179 days | 0 | . | . | . |
| 180 plus days | 0 | . | . | . |
| Summary | 19 | 17 | 17 | 38 |

Legal Status by Average LOS at Snapshot on March 31, 2007.

| | Administrative Hold | | Sentenced | | Total | |
|------------------|---------------------|-----|-----------|-----|-------|-----|
| | No. | LOS | No. | LOS | No. | LOS |
| Family Court | 1 | 13 | 18 | 17 | 19 | 17 |
| 30 days or less | 1 | 13 | 16 | 15 | 17 | 15 |
| 31 days or more | 0 | . | 2 | 38 | 2 | 38 |
| Superior Court | 0 | . | 0 | . | 0 | . |
| 120 days or less | 0 | . | 0 | . | 0 | . |
| 121 days or more | 0 | . | 0 | . | 0 | . |
| Total | 1 | 13 | 18 | 17 | 19 | 17 |

Population Demographics on March 31, 2007.

| Race/ethnicity and age | Total | |
|------------------------|--------|---------|
| | Number | Percent |
| African American | | |
| 15 | 1 | 5 |
| 16 | 6 | 32 |
| 17 | 4 | 21 |
| 18 | 2 | 11 |
| Subtotal | 13 | 68 |
| White | | |
| 15 | 1 | 5 |
| 16 | 3 | 16 |
| 17 | 1 | 5 |
| 18 | 1 | 5 |
| Subtotal | 6 | 32 |
| Total | 19 | 100 |

Youth's Involvement on March 31, 2007.

| Administrative hold | Number | LOS in days |
|---|--------|-------------|
| Aftercare | 1 | 13 |
| Sentenced | | |
| Aftercare | 0 | . |
| Child Mental Health | 3 | 26 |
| Division of Family Services | 1 | 23 |
| Serious Juvenile Offender and Comprehensive Aftercare Program | 6 | 21 |
| Indefinite sentences | 18 | 17 |
| Superior Court | 0 | . |

Releases, First Quarter 2007.

| To whom released/program | Number | Percent | LOS in days | |
|--|--------|---------|-------------|---------|
| | | | Mean | Maximum |
| Aftercare | 2 | 3 | 43 | 50 |
| Awol status | 2 | 3 | 39 | 52 |
| Child, Inc. | 2 | 3 | 30 | 32 |
| New Castle County Detention Center | 1 | 2 | 20 | 20 |
| Parent | 50 | 83 | 27 | 73 |
| Project Stay Free, electronic monitoring | 1 | 2 | 33 | 33 |
| Relative | 1 | 2 | 3 | 3 |
| VisionQuest, FICM | 1 | 2 | 15 | 15 |
| Total | 60 | 100 | 27 | 73 |

Legal Status by Average LOS at Release, First Quarter 2007.

| | Administrative Hold | | Sentenced | | Total | |
|------------------|---------------------|-----|-----------|-----|-------|-----|
| | No. | LOS | No. | LOS | No. | LOS |
| Family Court | 18 | 4 | 42 | 37 | 60 | 27 |
| 30 days or less | 18 | 4 | 8 | 25 | 26 | 11 |
| 31 days or more | 0 | . | 34 | 40 | 34 | 40 |
| Superior Court | 0 | . | 0 | . | 0 | . |
| 120 days or less | 0 | . | 0 | . | 0 | . |
| 121 days or more | 0 | . | 0 | . | 0 | . |
| Total | 18 | 4 | 42 | 37 | 60 | 27 |

Crime Category at Release, First Quarter 2007.

| Category | Number | Percent | LOS in days | |
|--|--------|---------|-------------|---------|
| | | | Mean | Maximum |
| Violent felony | 15 | 25 | 38 | 50 |
| Violent misdemeanor | 2 | 3 | 31 | 31 |
| Non-violent felony | 4 | 7 | 33 | 43 |
| Non-violent misdemeanor | 8 | 13 | 37 | 52 |
| Traffic misdemeanor | 1 | 2 | 73 | 73 |
| Probation violation | 12 | 20 | 34 | 44 |
| Administrative hold/Aftercare revocation | 18 | 30 | 4 | 20 |
| Total | 60 | 100 | 27 | 73 |