



STATE OF DELAWARE  
EXECUTIVE DEPARTMENT  
OFFICE OF MANAGEMENT AND BUDGET

To: John Frazer  
From: Jorge Rodríguez-Labarca  
Date: October 16, 2006  
Subject: Second Quarter 2006 Mowlds Cottage Status Report

---

*Admissions:* There were 49 admissions during the second quarter of 2006.

*Admission demographics:* Thirty-six African Americans, 10 whites and three Hispanics were admitted during the second quarter.

*Leading charges at admission:* The most frequent leading charges at admission for the second quarter were: administrative hold, 14; and, violation of probation, 11. 22 percent, or 11 youth, were admitted for violent felonies.

*Length of stay:* On June 30, there were 15 youth at Mowlds Cottage with an average length of stay (LOS) of 15 days, a median LOS of 11 days, and a maximum LOS of 37 days.

On June 30, there were 15 Family Court youth with an average LOS of 15 days.

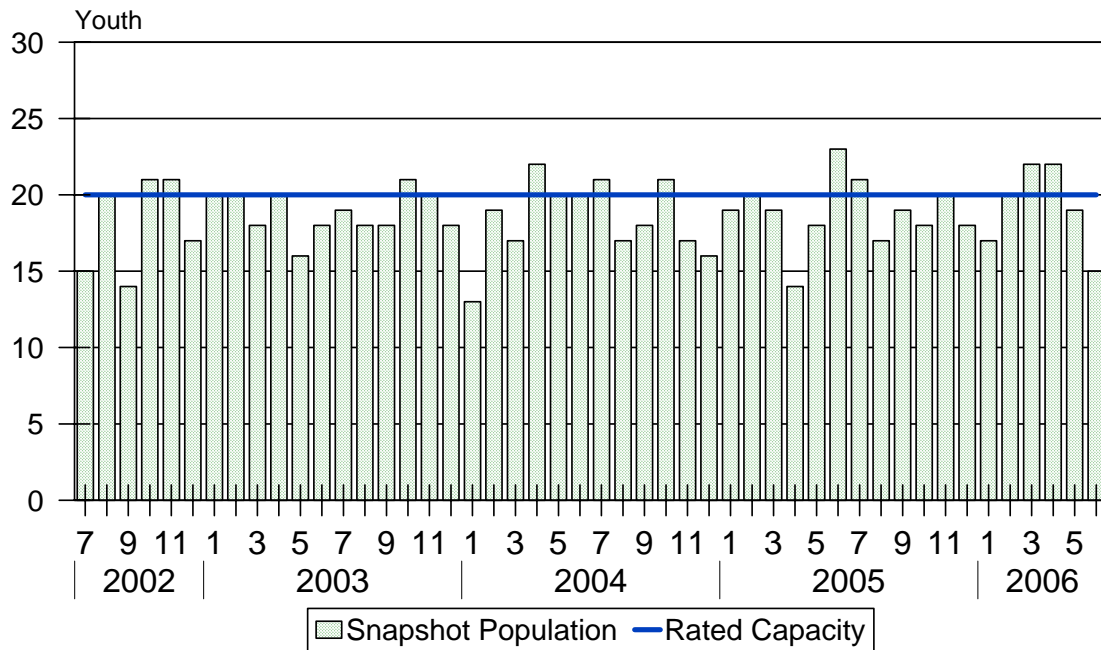
*Snapshot demographics:* Of the 15 youth at Mowlds Cottage, there were 12 African Americans, one Hispanic and two whites.

*Youth's status:* Twelve youth were serving indefinite Family Court sentences while three youth were serving administrative sanctions.

*Releases:* 56 youth were released during the second quarter of 2006 with an average LOS of 36 days and a maximum LOS of 106 days.

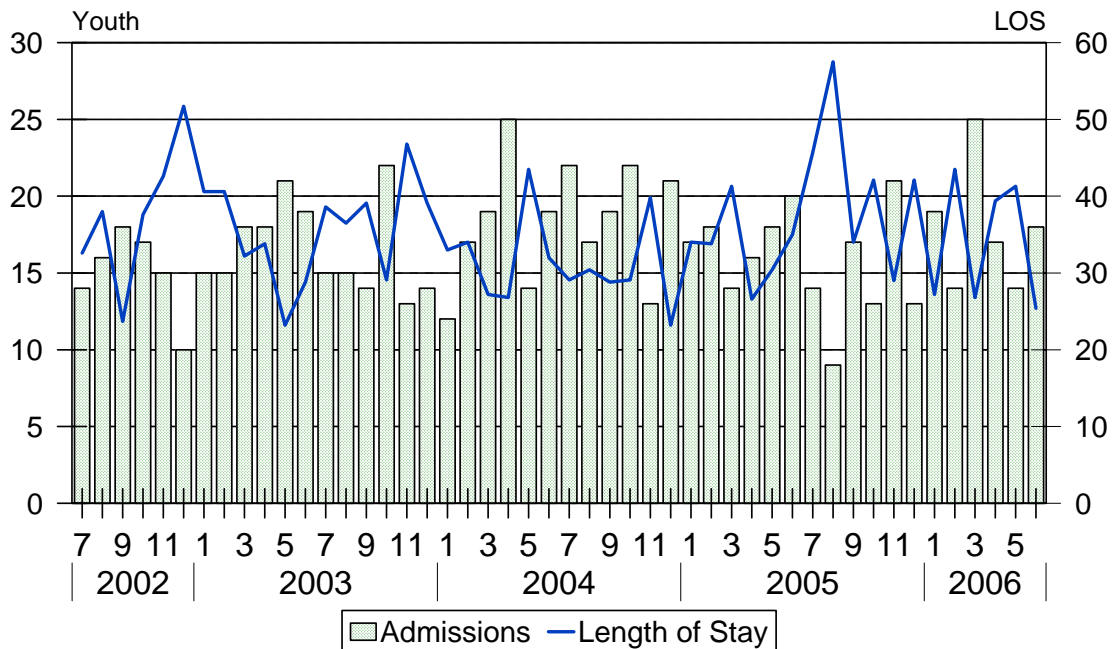


### Mowlds Cottage Snapshot Population and Rated Capacity



Snapshot populations are taken at the end of any given month.

### Mowlds Cottage Admissions and Time Served



Length of Stay: Average time in days at the Mowlds for youth given monthly admissions and snapshot populations.

### Admissions, Second Quarter 2006.

Month	Number	Percent
April	17	35
May	14	29
June	18	37
Total	49	100

### Admission Demographics, Second Quarter 2006.

Race/ethnicity and age	Total	
	Number	Percent
African American		
12	1	2
14	3	6
15	1	2
16	14	29
17	12	24
18	5	10
Subtotal	36	73
Hispanic		
16	1	2
17	2	4
Subtotal	3	6
White		
15	1	2
16	3	6
17	4	8
18	2	4
Subtotal	10	20
Total	49	100

### Admissions Profile for Second Quarter 2006 Mowlds Cottage Admittees

Admissions	<u>Youth</u>			<u>Admissions</u>		
	Number	Percent	Cum. %	Number	Percent	Cum. %
Total	49	100	100	419	100	100
First admission	0	.	.	0	.	.
Multiple admissions	49	100	100	419	100	100
2 <sup>nd</sup>	2	4	4	4	1	1
3 <sup>rd</sup>	4	8	12	12	3	4
4 <sup>th</sup>	6	12	24	24	6	9
5 <sup>th</sup>	6	12	37	30	7	16
6 <sup>th</sup>	3	6	43	18	4	20
7 <sup>th</sup>	2	4	47	14	3	23
8 <sup>th</sup>	2	4	51	16	4	26
9 <sup>th</sup>	3	6	57	27	6	33
10 <sup>th</sup>	4	8	65	40	10	41
11 <sup>th</sup>	1	2	67	11	3	44
12 <sup>th</sup>	3	6	73	36	9	52
13 <sup>th</sup>	2	4	78	26	6	58
14 <sup>th</sup>	2	4	82	28	7	64
15 <sup>th</sup>	1	2	84	15	4	67
16 <sup>th</sup>	3	6	90	48	11	78
17 <sup>th</sup>	3	6	96	51	12	90
18 <sup>th</sup>	0	.	96	0	.	90
19 <sup>th</sup>	1	2	98	19	5	94
20 <sup>th</sup>	0	.	98	0	.	94
21 <sup>st</sup>	0	.	98	0	.	94
22 <sup>nd</sup>	0	.	98	0	.	94
23 <sup>rd</sup>	0	.	98	0	.	94
24 <sup>th</sup>	0	.	98	0	.	94
25 <sup>th</sup>	0	.	98	0	.	94
26 <sup>th</sup>	0	.	98	0	.	94
27 <sup>th</sup>	1	2	100	27	6	100

Note: First admission means that, heretofore, a juvenile had never been admitted to Secure Detention, Level III Residential, Level IV, Level V, or Division of Family Services (DFS) and Child Mental Health (CMH) programs that provide residential services. Included in the count of multiple admissions are those admitted to secure detention, Level III Residential, Level IV, Level V, and DFS and CMH programs that provide residential services which are classified by DSCYF as crisis bed; mental health; residential group care; treatment center; residential Interagency Collaborative Team; residential treatment, mental health; and residential treatment, substance abuse.

### Admission Profile by Dispositional Level for Second Quarter 2006 Mowlds Cottage Admittees

Admissions	Number and percent of youth							
	Sec. Det.		L. V		L. IV		L. IIIR	
	N.	%	N.	%	N.	%	N.	%
Total	49	100	49	100	49	100	49	100
No prior admissions	4	8	6	12	15	31	17	35
Multiple admissions	45	92	43	88	34	69	32	65
2 <sup>nd</sup>	14	29	13	27	11	22	7	14
3 <sup>rd</sup>	4	8	11	22	8	16	5	10
4 <sup>th</sup>	4	8	9	18	6	12	10	20
5 <sup>th</sup>	9	18	5	10	4	8	6	12
6 <sup>th</sup>	4	8	5	10	1	2	3	6
7 <sup>th</sup>	6	12	0	.	2	4	1	2
8 <sup>th</sup>	1	2	0	.	0	.	0	.
9 <sup>th</sup>	1	2	0	.	1	2	0	.
10 <sup>th</sup>	1	2	0	.	0	.	0	.
11 <sup>th</sup>	0	.	0	.	0	.	0	.
12 <sup>th</sup>	1	2	0	.	1	2	0	.
13 <sup>th</sup>	0	.	0	.	0	0	0	.

Note: Included in the count of multiple admissions are those admitted to Secure Detention (Sec. Det.), Level III Residential (L. IIIR), Level IV, Level V, and Division of Family Services and Child Mental Health programs that provide residential services which are classified by DSCYF as crisis bed; mental health; residential group care; treatment center; residential Interagency Collaborative Team; residential treatment, mental health; and residential treatment, substance abuse.

Reading this table: This table shows that 92 percent of youth admitted to Mowlds Cottage during the second quarter of 2006 had prior admissions to secure detention, 88 percent to Level V, 69 percent to Level IV, and 65 percent to Level IIIR. All youth without prior Level IV admissions had prior admissions to secure detention, Levels IIIR, and/or V.

### Leading Charge at Admission, Second Quarter 2006.

Leading charge	
Administrative hold	14
Administrative hold, Aftercare revocation	2
Arson in the second degree	1
Assault in the third degree	1
Burglary in the second degree	2
Burglary in the third degree	1
Conspiracy in the second degree	1
Criminal impersonation	1
Distribution of a controlled substance within 300 feet of a park	1
Escape in the third degree	1
Menacing, aggravated	1
Offensive touching	1
Possession of a deadly weapon by a person prohibited, firearm	2
Possession of a destructive weapon	1
Possession with intent to deliver narcotics	1
Possession with intent to deliver non-narcotics	1
Receiving stolen property, felony	1
Robbery in the first degree	1
Robbery in the second degree	1
Robbery in the second degree, attempted	1
Terroristic threatening, misdemeanor	1
Theft, misdemeanor	1
Violation of probation	11
Total	49

### Crime Category at Admission, Second Quarter 2006.

Category	Count	Percent
Violent felony	11	22
Violent misdemeanor	2	4
Non-violent felony	5	10
Non-violent misdemeanor	4	8
Probation violation	11	22
Administrative hold/Aftercare revocation	16	33
Total	49	100

### Length of Stay on June 30, 2006.

LOS in intervals	<u>Youth</u>	<u>Length of Stay</u>		
	Number	Average	Median	Maximum
1 to 3 days	5	2	2	2
4 to 14 days	3	8	9	11
15 to 29 days	4	21	21	29
30 to 59 days	3	35	37	37
60 to 119 days	0	.	.	.
120 to 179 days	0	.	.	.
180 plus days	0	.	.	.
Summary	15	15	11	37

### Legal Status by Average LOS at Snapshot on June 30, 2006.

	<u>Administrative Hold</u>		<u>Sentenced</u>		<u>Total</u>	
	No.	LOS	No.	LOS	No.	LOS
Family Court	3	6	12	17	15	15
30 days or less	3	6	10	13	13	11
31 days or more	0	.	2	37	2	37
Superior Court	0	.	0	.	0	.
120 days or less	0	.	0	.	0	.
121 days or more	0	.	0	.	0	.
Total	3	6	12	17	15	15

### Population Demographics on June 30, 2006.

Race/ethnicity and age	Total	
	Number	Percent
African American		
12	1	7
14	1	7
16	6	40
17	3	20
18	1	7
Subtotal	12	80
Hispanic		
17	1	7
Subtotal	1	7
White		
16	1	7
17	1	7
Subtotal	2	14
Total	15	100

### Youth's Involvement on June 30, 2006.

Administrative hold	Number	LOS in days
Aftercare	3	6
Sentenced	Number	LOS in days
Aftercare	6	10
Child Mental Health	3	6
Division of Family Services	0	.
Serious Juvenile Offender and Comprehensive Aftercare Program	6	10
Indefinite sentences	12	17
Superior Court	0	.



## Releases, Second Quarter 2006.

To whom released/program	Number	Percent	<u>LOS in days</u>	
			Mean	Maximum
AWOL status	2	4	29	32
Community Services, Camelot	1	2	8	8
Community Services, Lead, Inc.	1	2	36	36
Community Services, Ministry Of Caring	4	7	45	106
Community Services, PSF Electronic M.	1	2	83	83
Parent	46	82	35	64
YRS, Ferris School For Boys	1	2	23	23
Total	56	100	36	106

## Legal Status by Average LOS at Release, Second Quarter 2006.

	<u>Administrative Hold</u>		<u>Sentenced</u>		<u>Total</u>	
	No.	LOS	No.	LOS	No.	LOS
Family Court	16	7	40	48	56	36
30 days or less	15	4	3	24	18	7
31 days or more	1	50	37	49	38	50
Superior Court	0	.	0	.	0	.
120 days or less	0	.	0	.	0	.
121 days or more	0	.	0	.	0	.
Total	16	7	40	48	56	36

## Crime Category at Release, Second Quarter 2006.

Category	Number	Percent	<u>LOS in days</u>	
			Mean	Maximum
Violent felony	17	30	43	64
Non-violent felony	9	16	60	106
Non-violent misdemeanor	6	11	38	57
Probation violation	9	16	50	83
Administrative hold/Aftercare revocation	15	27	4	10
Total	56	100	36	106