



**STATE OF DELAWARE  
EXECUTIVE DEPARTMENT  
OFFICE OF MANAGEMENT AND BUDGET**

**To:** John Frazer  
**From:** Jorge Rodríguez-Labarca  
**Date:** April 20, 2006  
**Subject:** First Quarter 2006 Mowlds Cottage Status Report

---

*Admissions:* There were 58 admissions during the first quarter of 2006.

*Admission demographics:* Thirty-nine African Americans, 18 whites and one Hispanic were admitted during the first quarter.

*Leading charges at admission:* The most frequent leading charges at admission for the first quarter were: administrative hold, 15; possession with intent to deliver narcotics, 5; and, possession of a deadly weapon - firearm - by person prohibited and robbery in the first degree, 4. 40 percent, or 23 youth, were admitted for violent felonies.

*Length of stay:* On March 31, there were 22 youth at Mowlds Cottage with an average length of stay (LOS) of 25 days, a median LOS of 23 days, and a maximum LOS of 79 days.

On March 31, there were 22 Family Court youth with an average LOS of 25 days.

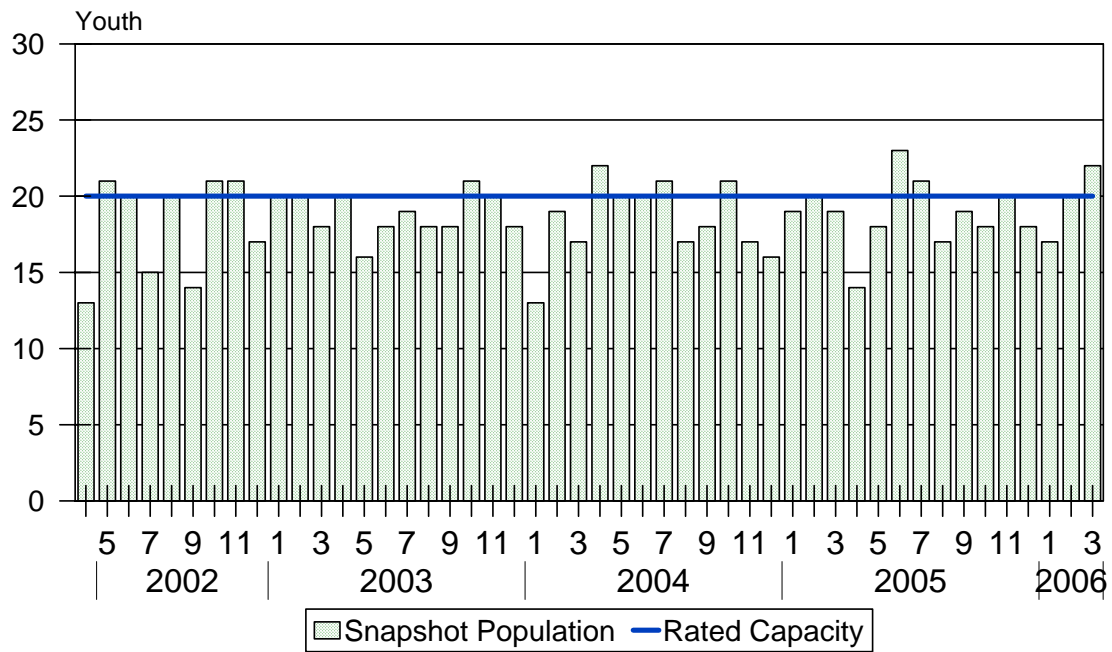
*Snapshot demographics:* Of the 22 youth at Mowlds Cottage, there were 15 African Americans and seven whites.

*Youth's status:* Twenty youth were serving indefinite Family Court sentences while two youth were serving administrative sanctions.

*Releases:* 54 youth were released during the first quarter of 2006 with an average LOS of 31 days and a maximum LOS of 77 days.

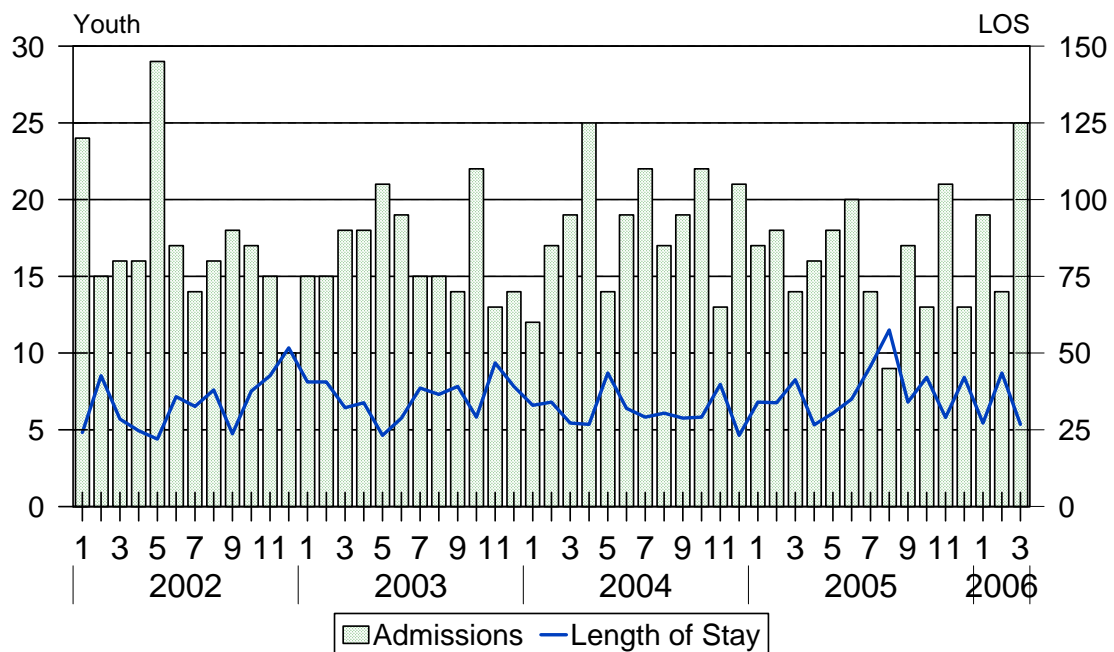


### Mowlds Cottage Snapshot Population and Rated Capacity



Snapshot populations are taken at the end of any given month.

### Mowlds Cottage Admissions and Time Served



Length of Stay: Average time in days at the Mowlds for youth given monthly admissions and snapshot populations.

### Admissions, First Quarter 2006.

Month	Number	Percent
January	19	33
February	14	24
March	25	43
Total	58	100

### Admission Demographics, First Quarter 2006.

Race/ethnicity and age	Total	
	Number	Percent
African American		
14	14	2
15	15	2
16	16	9
17	17	18
18	18	8
Subtotal	39	67
Hispanic		
16	1	2
Subtotal	1	2
White		
14	1	2
15	3	5
16	5	9
17	5	9
18	4	7
Subtotal	18	31
Total	58	100

### Admissions Profile for First Quarter 2006 Mowlds Cottage Admittees

Admissions	<u>Youth</u>			<u>Admissions</u>		
	Number	Percent	Cum. %	Number	Percent	Cum. %
Total	58	100	100	457	100	100
First admission	0	0	0	0	0	0
Multiple admissions	58	100	100	457	100	100
2 <sup>nd</sup>	0	0	0	0	0	0
3 <sup>rd</sup>	6	10	10	18	4	4
4 <sup>th</sup>	9	16	26	36	8	12
5 <sup>th</sup>	5	9	34	25	5	17
6 <sup>th</sup>	9	16	50	54	12	29
7 <sup>th</sup>	4	7	57	28	6	35
8 <sup>th</sup>	3	5	62	24	5	40
9 <sup>th</sup>	6	10	72	54	12	52
10 <sup>th</sup>	4	7	79	40	9	61
11 <sup>th</sup>	1	2	81	11	2	63
12 <sup>th</sup>	3	5	86	36	8	71
13 <sup>th</sup>	2	3	90	26	6	77
14 <sup>th</sup>	2	3	93	28	6	83
15 <sup>th</sup>	0	0	93	0	0	83
16 <sup>th</sup>	1	2	95	16	4	87
17 <sup>th</sup>	0	0	95	0	0	87
18 <sup>th</sup>	1	2	97	18	4	91
19 <sup>th</sup>	0	0	97	0	0	91
20 <sup>th</sup>	0	0	97	0	0	91
21 <sup>st</sup>	1	2	98	21	5	95
22 <sup>nd</sup>	1	2	100	22	5	100

Note: First admission means that, heretofore, a juvenile had never been admitted to Secure Detention, Level III Residential, Level IV, Level V, or Division of Family Services (DFS) and Child Mental Health (CMH) programs that provide residential services. Included in the count of multiple admissions are those admitted to secure detention, Level III Residential, Level IV, Level V, and DFS and CMH programs that provide residential services which are classified by DSCYF as crisis bed; mental health; residential group care; treatment center; residential Interagency Collaborative Team; residential treatment, mental health; and residential treatment, substance abuse.

### Admission Profile by Dispositional Level for First Quarter 2006 Mowlds Cottage Admittees

Admissions	Number and percent of youth							
	Sec. Det.		L. V		L. IV		L. IIIR	
	N.	%	N.	%	N.	%	N.	%
Total	58	100	58	100	58	100	58	100
No prior admissions	4	7	2	3	19	33	14	24
Multiple admissions	54	93	56	97	39	67	44	76
2 <sup>nd</sup>	11	19	22	38	16	28	11	19
3 <sup>rd</sup>	16	28	17	29	13	22	18	31
4 <sup>th</sup>	8	14	12	21	5	9	6	10
5 <sup>th</sup>	6	10	2	3	2	3	5	9
6 <sup>th</sup>	6	10	3	5	1	2	3	5
7 <sup>th</sup>	3	5	0	.	0	.	0	.
8 <sup>th</sup>	2	3	0	.	2	3	1	2
9 <sup>th</sup>	1	2	0	.	0	.	0	.
10 <sup>th</sup>	0	0	0	.	0	.	0	0

Note: Included in the count of multiple admissions are those admitted to Secure Detention (Sec. Det.), Level III Residential (L. IIIR), Level IV, Level V, and Division of Family Services and Child Mental Health programs that provide residential services which are classified by DSCYF as crisis bed; mental health; residential group care; treatment center; residential Interagency Collaborative Team; residential treatment, mental health; and residential treatment, substance abuse.

Reading this table: This table shows that 93 percent of youth admitted to Mowlds Cottage during the first quarter of 2006 had prior admissions to secure detention, 97 percent to Level V, 67 percent to Level IV, and 76 percent to Level IIIR. All youth without prior Level IV admissions had prior admissions to secure detention, Levels IIIR, and/or V.

### Leading Charge at Admission, First Quarter 2006.

Leading charge	
Administrative hold	15
Arson in the first degree	1
Assault in the second degree	3
Burglary in the second degree	2
Burglary in the third degree	2
Carjacking in the first degree, class B felony	1
Conspiracy in the second degree	1
Criminal trespass in the first degree	1
Distribution of a controlled substance within 300 feet of a park	1
Escape in the second degree	2
Forgery in the third degree	1
Possession of a deadly weapon by person prohibited, firearm	4
Possession of a deadly weapon during the commission of a felony	1
Possession of a weapon with a removed serial number	1
Possession of drug paraphernalia	1
Possession of non-controlled drug	1
Possession or use of a non-narcotic	1
Possession with intent to deliver narcotics	5
Possession with intent to deliver non-narcotics	1
Robbery in the first degree	4
Robbery in the second degree	2
Terroristic threatening, unclassified misdemeanor	1
Trafficking in cocaine from ten to 50 grams	1
Unauthorized use of a vehicle	1
Underage possession or consumption of alcohol	1
Violation of probation	3
Total	47

### Crime Category at Admission, First Quarter 2006.

Category	Count	Percent
Violent felony	23	40
Violent misdemeanor	1	2
Non-violent felony	9	16
Non-violent misdemeanor	6	10
Unclassified misdemeanor	1	2
Probation violation	3	5
Administrative hold/Aftercare revocation	15	26
Total	58	100

### Length of Stay on March 31, 2006.

LOS in intervals	<u>Youth</u>	<u>Length of Stay</u>		
	Number	Average	Median	Maximum
1 to 3 days	4	2	2	2
4 to 14 days	3	9	9	9
15 to 29 days	7	20	22	23
30 to 59 days	6	37	35	58
60 to 119	2	72	72	79
120 to 179	0	.	.	.
180 plus days	0	.	.	.
Summary	22	25	23	79

### Legal Status by Average LOS at Snapshot on March 31, 2006.

	<u>Administrative Hold</u>		<u>Sentenced</u>		<u>Total</u>	
	No.	LOS	No.	LOS	No.	LOS
Family Court	2	1	20	27	22	25
30 days or less	2	1	14	16	16	15
31 days or more	0	.	6	51	6	51
Superior Court	0	.	0	.	0	.
120 days or less	0	.	0	.	0	.
121 days or more	0	.	0	.	0	.
Total	2	1	20	27	22	25

### Population Demographics on March 31, 2006.

Race/ethnicity and age	Total	
	Number	Percent
African American		
15	1	5
16	3	14
17	7	32
18	4	18
Subtotal	15	68
White		
14	1	5
15	1	5
16	2	9
17	2	9
18	1	5
Subtotal	7	32
Total	22	100

### Youth's Involvement on March 31, 2006.

Administrative hold	Number	LOS in days
Aftercare	2	1
Sentenced	Number	LOS in days
Aftercare	8	40
Child Mental Health	3	39
Division of Family Services	3	49
Serious Juvenile Offender and Comprehensive Aftercare Program	11	33
Indefinite sentences	20	27
Superior Court	0	.



## Releases, First Quarter 2006.

To whom released/program	Number	Percent	LOS in days	
			Mean	Maximum
AWOL status	1	2	12	12
Community Services, Project Stay Free	1	2	3	3
Parent	49	91	33	77
Community Services, Ministry of Caring	3	6	16	43
Total	54	100	31	77

## Legal Status by Average LOS at Release, First Quarter 2006.

	Administrative Hold		Sentenced		Total	
	No.	LOS	No.	LOS	No.	LOS
Family Court	16	4	38	42	54	31
30 days or less	16	4	3	23	19	6
31 days or more	0	.	35	44	35	44
Superior Court	0	.	0	.	0	.
120 days or less	0	.	0	.	0	.
121 days or more	0	.	0	.	0	.
Total	16	4	38	42	54	31

## Crime Category at Release, First Quarter 2006.

Category	Number	Percent	LOS in days	
			Mean	Maximum
Violent felony	21	39	44	77
Violent misdemeanor	3	6	39	44
Non-violent felony	5	9	37	57
Non-violent misdemeanor	5	9	41	50
Unclassified misdemeanor	1	2	50	50
Probation violation	4	7	38	43
Administrative hold/Aftercare revocation	15	28	3	4
Total	54	100	31	77