



STATE OF DELAWARE  
EXECUTIVE DEPARTMENT  
OFFICE OF MANAGEMENT AND BUDGET

To: John Frazer  
From: Jorge Rodríguez-Labarca  
Date: November 16, 2009  
Subject: Third Quarter 2009 Ferris School Status Report

---

*Admissions:* There were 36 admissions during the third quarter of 2009.

Admission demographics: Of the 36 admissions during the third quarter of 2009, 26 were African American and 10 were white.

*Leading charges at admission:* The most frequent leading charges at admission for the third quarter were: robbery in the first degree and violation of probation, 6; and, burglary in the second degree, 3. Fifty-three percent, or 19 youth, were admitted for violent felonies.

*Length of stay:* On September 30, there were 79 youth at the Ferris School for Boys with an average length of stay (LOS) of 111 days, a median LOS of 105 days, and a maximum LOS of 287 days.

On September 30, there were 79 Family Court youth with an average LOS of 111 days.

*Snapshot demographics:* Of the 79 youth at the Ferris School for Boys, there were 56 African American and 23 whites.

*Youth's status:* On September 30, 16 were serving 12 month mandatory sentences, 8 were serving 6 month mandatory sentences, and 55 were serving indefinite sentences.

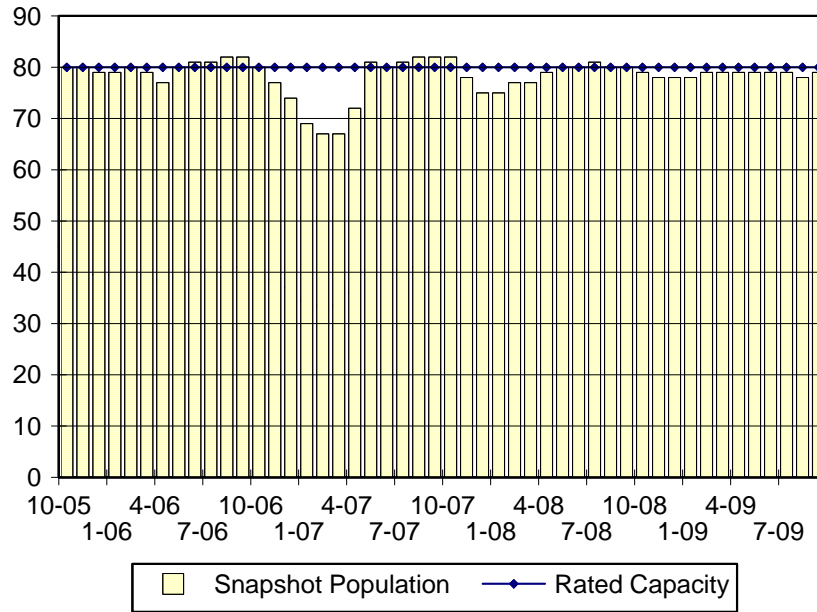
*Releases:* 36 youth were released during the third quarter of 2009 with an average LOS of 195 days and a maximum LOS at release of 350 days.



**Budget Development, Planning and Administration**  
**Statistical Analysis Center**

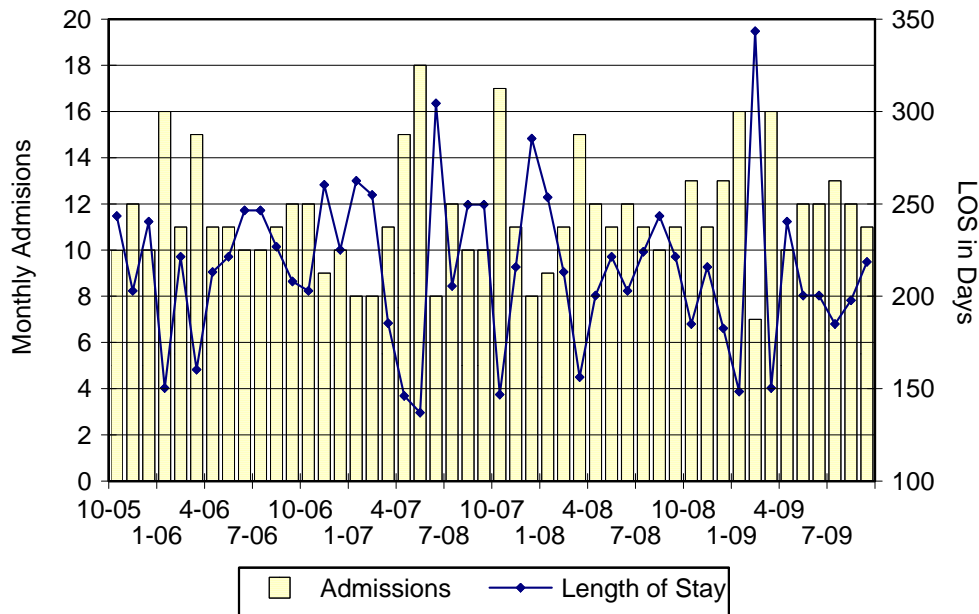
410 Federal Street • Suite 6 • Dover, DE 19901  
Phone: (302) 739-4626 • Fax: (302) 739-4630 • [www.omb.delaware.gov](http://www.omb.delaware.gov)

### Ferris School Snapshot Population and Rated Capacity



Snapshot populations are taken at the end of any given month.

### Ferris School Admissions and Time at Ferris School



Length of Stay: Average length of stay in days at the Ferris School given monthly admissions and populations.

## Admissions, Third Quarter 2009.

Month	Number	Percent
July	13	36
August	12	33
September	11	31
Total	36	100

## Admission Demographics, Third Quarter 2009.

Race/ethnicity and age	Total	
	Number	Percent
African American		
13	1	3
14	1	3
15	5	14
16	9	25
17	9	25
18	1	3
Subtotal	26	72
White		
15	2	6
16	1	3
17	6	17
18	1	3
Subtotal	10	28
Total	36	100

Admissions Profile for  
Third Quarter 2009 Ferris School Admittees.

Admissions	<u>Youth</u>			<u>Admissions</u>		
	Number	Percent	Cum. %	Number	Percent	Cum. %
Total	36	100%	100%	205	100%	100%
First admission	0	.	.	0	.	.
Multiple admissions	36	100%	100%	205	100%	100%
2 <sup>nd</sup>	9	25%	25%	18	9%	9%
3 <sup>rd</sup>	5	14%	39%	15	7%	16%
4 <sup>th</sup>	7	19%	58%	28	14%	30%
5 <sup>th</sup>	2	6%	64%	10	5%	35%
6 <sup>th</sup>	4	11%	75%	24	12%	46%
7 <sup>th</sup>	1	3%	78%	7	3%	50%
8 <sup>th</sup>	0	.	78%	0	.	50%
9 <sup>th</sup>	1	3%	81%	9	4%	54%
10 <sup>th</sup>	1	3%	83%	10	5%	59%
11 <sup>th</sup>	2	6%	89%	22	11%	70%
12 <sup>th</sup>	1	3%	92%	12	6%	76%
13 <sup>th</sup>	0	.	92%	0	.	76%
14 <sup>th</sup>	2	6%	97%	28	14%	89%
...	.	.	97%	.	.	89%
22 <sup>nd</sup>	1	3%	100%	22	11%	100%

Note: First admission means that, heretofore, a juvenile had never been admitted to Secure Detention, Level III, Level IV, Level V, or Division of Family Services (DFS) and Child Mental Health (CMH) programs that provide residential services. Included in the count of multiple admissions are those admitted to Secure Detention, Level III, Level IV, Level V, and DFS and CMH programs that provide residential services which are classified by DSCYF as crisis bed; mental health; residential group care; treatment center; residential Interagency Collaborative Team; residential treatment, mental health; and residential treatment, substance abuse.

**Admission Profile by Dispositional  
Level for Third Quarter 2009 Ferris School Admittees.**

Admissions	Number and percent of youth							
	Sec. Det.		L. V		L. IV		L. III	
	N.	%	N.	%	N.	%	N.	%
Total	36	100%	36	100%	36	100%	36	100%
No prior admissions	12	33%	0	.	20	56%	12	33%
Multiple admissions	24	67%	36	100%	16	44%	24	67%
2 <sup>nd</sup>	13	36%	30	83%	2	6%	5	14%
3 <sup>rd</sup>	4	11%	4	11%	6	17%	6	17%
4 <sup>th</sup>	5	14%	2	6%	2	6%	6	17%
5 <sup>th</sup>	2	6%	0	.	2	6%	4	11%
6 <sup>th</sup>	0	.	0	.	0	.	1	3%
7 <sup>th</sup>	0	.	0	.	1	3%	1	3%
8 <sup>th</sup>	0	.	0	.	1	3%	1	3%
9 <sup>th</sup>	0	.	0	.	1	3%	0	.
...	.	.	.	.	.	.	.	.
19 <sup>th</sup>	0	.	0	.	1	3%	0	.

Note: Included in the count of multiple admissions are those admitted to Secure Detention (Sec. Det.), Level III, Level IV, Level V, and Division of Family Services and Child Mental Health programs that provide residential services which are classified by DSCYF as crisis bed; mental health; residential group care; treatment center; residential Interagency Collaborative Team; residential treatment, mental health; and residential treatment, substance abuse.

Reading this table: This table shows that 67 percent of youth admitted to the Ferris School during the third quarter of 2009 had prior admissions to secure detention, 100 percent to Level V, 44 percent to Level IV, and 67 percent to Level III.

Leading Charge at Admission, Third Quarter 2009.

Sentenced admissions	Total	Race	
		White	Minority
Breach of conditions of release, felony	1	0	1
Burglary in the first degree	1	0	1
Burglary in the second degree	3	2	1
Burglary in the third degree	2	1	1
Carrying a concealed dangerous instrument	1	1	0
Distribution of a controlled substance within 300 feet of a park	1	0	1
Escape in the third degree	2	0	2
Menacing, aggravated	2	1	1
Possession of a deadly weapon by person prohibited	1	0	1
Possession of a deadly weapon by person prohibited, firearm	1	1	0
Possession with intent to deliver narcotics	1	0	1
Possession with intent to deliver non-narcotics	1	0	1
Receiving stolen property, felony	1	0	1
Robbery in the first degree	6	1	5
Robbery in the first degree, attempted	2	0	2
Robbery in the second degree	2	0	2
Theft of a motor vehicle	1	1	0
Theft, misdemeanor	1	0	1
Violation of probation	6	2	4
<b>Total</b>	<b>36</b>	<b>10</b>	<b>26</b>

### Crime Category at Admission, Third Quarter 2009.

<u>Category</u>	<u>Number</u>	<u>Percent</u>
Violent felony	19	53
Violent misdemeanor	1	3
Non-violent felony	7	19
Non-violent misdemeanor	3	8
Probation violation	6	17
<b>Total</b>	<b>36</b>	<b>100</b>

While 6 youth were admitted solely for a violation of probation (VOP), another 3 had a VOP and an arrest for another crime. A total of 9 youth were charged with a VOP.

### Length of Stay on September 30, 2009.

<u>LOS in intervals</u>	<u>Youth</u>	<u>Length of Stay</u>		
	<u>Number</u>	<u>Mean</u>	<u>Median</u>	<u>Maximum</u>
1 to 3 days	0	.	.	.
4 to 14 days	4	12	13	14
15 to 29 days	6	23	21	28
30 to 59 days	13	45	42	56
60 to 119 days	25	94	91	119
120 to 179 days	19	151	153	175
180 plus days	12	232	231	287
<b>Summary</b>	<b>79</b>	<b>111</b>	<b>105</b>	<b>287</b>

### Legal Status by Average LOS at Snapshot on September 30, 2009.

	<u>Aftercare Revocation</u>		<u>Sentenced</u>		<u>Total</u>	
	<u>No.</u>	<u>LOS</u>	<u>No.</u>	<u>LOS</u>	<u>No.</u>	<u>LOS</u>
Family Court	0	.	79	111	79	111
30 days or less	0	.	11	20	11	20
31 days or more	0	.	68	126	68	126
Superior Court	0	.	0	.	0	.
120 days or less	0	.	0	.	0	.
121 days or more	0	.	0	.	0	.
<b>Total</b>	<b>0</b>	<b>.</b>	<b>79</b>	<b>111</b>	<b>79</b>	<b>111</b>

Population Demographics on September 30, 2009.

Race/ethnicity and age	Total	
	Number	Percent
African American		
13	1	1
14	4	5
15	11	14
16	18	23
17	21	27
18	1	1
Subtotal	56	71
White		
14	1	1
15	4	5
16	3	4
17	13	16
18	2	3
Subtotal	23	29
Total	79	100

Youth's Involvement on September 30, 2009.

Sentenced	No.	LOS
Aftercare	41	132
Child Mental Health	16	93
Division of Family Services	5	145
Probation	9	91
Serious Juvenile Offender and Comprehensive Aftercare Program	1	209
Indefinite sentence	55	96
Mandatory sentence	24	145
Family Court	79	111
Superior Court	0	.



## Releases, Third Quarter 2009.

To whom released/program	Number	Percent	LOS in days	
			Mean	Maximum
Maryland authorities	1	3	209	209
Parent	2	6	250	350
Mowlds Cottage	33	92	191	308
Total	36	100	195	350

## Legal Status by Average LOS at Release, Third Quarter 2009.

	Aftercare Revocation		Sentenced		Total	
	No.	LOS	No.	LOS	No.	LOS
Family Court	0	.	36	195	36	195
30 days or less	0	.	0	.	0	.
31 days or more	0	.	36	195	36	195
Superior Court	0	.	0	.	0	.
120 days or less	0	.	0	.	0	.
121 days or more	0	.	0	.	0	.
Total	0	.	36	195	36	195

## Crime Category at Release, Third Quarter 2009.

Category	Number	Percent	LOS in days		
			Minimum	Mean	Maximum
Violent felony	11	31	113	225	350
Violent misdemeanor	2	6	148	152	155
Non-violent felony	14	39	147	187	260
Non-violent misdemeanor	4	11	155	174	209
Probation violation	5	14	169	188	252
Total	36	100	113	195	350

Distribution of Ferris School Releases by LOS, Third Quarter 2009.

