



STATE OF DELAWARE
EXECUTIVE DEPARTMENT
OFFICE OF MANAGEMENT AND BUDGET

To: John Frazer
From: Jorge Rodríguez-Labarca
Date: December 15, 2008
Subject: Third Quarter 2008 Ferris School Status Report

Admissions: There were 32 admissions during the third quarter of 2008.

Admission demographics: Of the 32 admissions during the third quarter of 2008, 24 were African American and 8 were white.

Leading charges at admission: The most frequent leading charges at admission for the third quarter were: violation of probation, 9; and, possession of a firearm by person prohibited, 3. Twenty-two percent, or 7 youth, were admitted for violent felonies.

Length of stay: On September 30, there were 80 youth at the Ferris School for Boys with an average length of stay (LOS) of 122 days, a median LOS of 118 days, and a maximum LOS of 370 days.

On September 30, there were 80 Family Court youth with an average LOS of 122 days.

Snapshot demographics: Of the 80 youth at the Ferris School for Boys, there were 57 African American, 1 was Hispanic and 22 white.

Youth's status: On September 30, there were 48 youth serving indefinite sentences, 24 were serving 6 month mandatory sentences, and 8 were serving 12 month mandatory sentences.

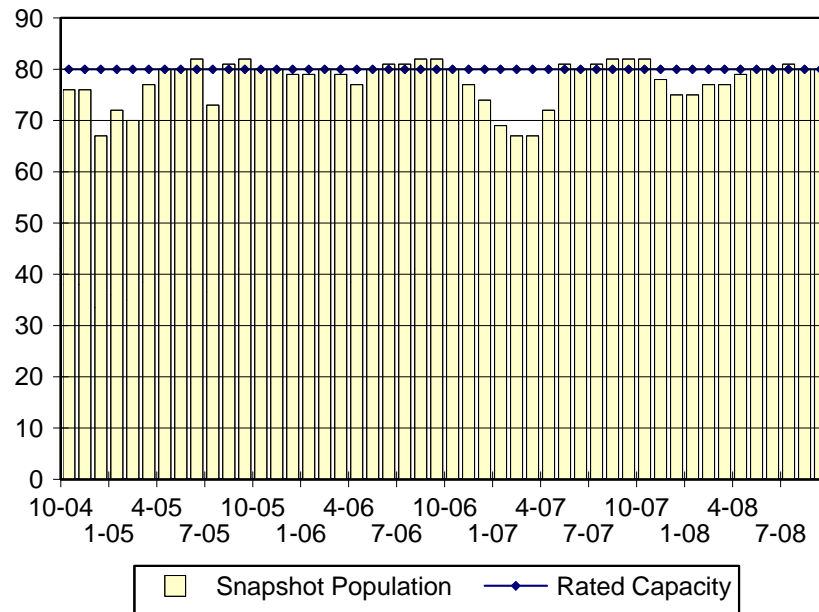
Releases: 32 youth were released during the third quarter of 2008 with an average LOS of 192 days and a maximum LOS at release of 345 days.



**Budget Development, Planning and Administration
Statistical Analysis Center**

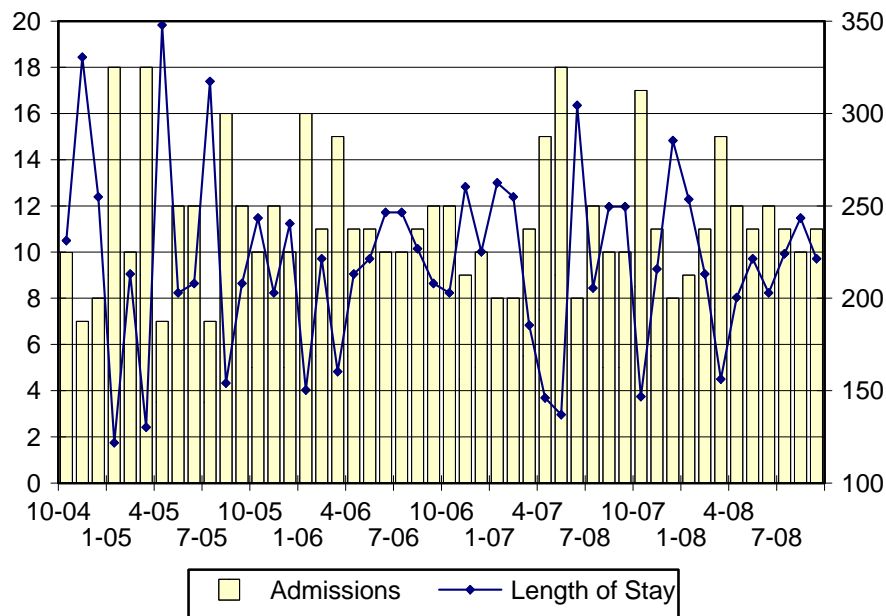
410 Federal Street • Suite 6 • Dover, DE 19901
Phone: (302) 739-4626 • Fax: (302) 739-4630 • www.omb.delaware.gov

Ferris School Snapshot Population and Rated Capacity



Snapshot populations are taken at the end of any given month.

Ferris School Admissions and Time at Ferris School



Length of Stay: Average length of stay in days at the Ferris School given monthly admissions and populations.

Admissions, Third Quarter 2008.

Month	Number	Percent
July	11	34
August	10	31
September	11	34
Total	32	100

Admission Demographics, Third Quarter 2008.

Race/ethnicity and age	<u>Total</u>	
	Number	Percent
African American		
15	8	25
16	7	22
17	6	19
18	3	9
Subtotal	24	75
White		
16	1	3
17	3	9
18	4	13
Subtotal	8	25
Total	32	100

Admissions Profile for
Third Quarter 2008 Ferris School Admittees.

Admissions	<u>Youth</u>			<u>Admissions</u>		
	Number	Percent	Cum. %	Number	Percent	Cum. %
Total	32	100%	100%	245	100%	100%
First admission	0	.	.	0	.	.
Multiple admissions	32	100%	100%	245	100%	100%
2 nd	4	13%	13%	8	3%	3%
3 rd	5	16%	28%	15	6%	9%
4 th	5	16%	44%	20	8%	18%
5 th	0	.	44%	0	.	18%
6 th	2	6%	50%	12	5%	22%
7 th	1	3%	53%	7	3%	25%
8 th	0	.	53%	0	.	25%
9 th	3	9%	63%	27	11%	36%
10 th	2	6%	69%	20	8%	44%
11 th	2	6%	75%	22	9%	53%
12 th	1	3%	78%	12	5%	58%
13 th	3	9%	88%	39	16%	74%
14 th	2	6%	94%	28	11%	86%
15 th	0	.	94%	0	.	86%
16 th	0	.	94%	0	.	86%
17 th	1	3%	97%	17	7%	93%
18 th	1	3%	100%	18	7%	100%

Note: First admission means that, heretofore, a juvenile had never been admitted to Secure Detention, Level III, Level IV, Level V, or Division of Family Services (DFS) and Child Mental Health (CMH) programs that provide residential services. Included in the count of multiple admissions are those admitted to Secure Detention, Level III, Level IV, Level V, and DFS and CMH programs that provide residential services which are classified by DSCYF as crisis bed; mental health; residential group care; treatment center; residential Interagency Collaborative Team; residential treatment, mental health; and residential treatment, substance abuse.

**Admission Profile by Dispositional
Level for Third Quarter 2008 Ferris School Admittees.**

Admissions	Number and percent of youth							
	Sec. Det.		L. V		L. IV		L. III	
	N.	%	N.	%	N.	%	N.	%
Total	32	100%	32	100%	32	100%	32	100%
No prior admissions	7	22%	1	3%	10	31%	8	25%
Multiple admissions	25	78%	31	97%	22	69%	24	75%
2 nd	12	38%	28	88%	3	9%	4	13%
3 rd	5	16%	2	6%	1	3%	4	13%
4 th	6	19%	0	.	0	.	6	19%
5 th	1	3%	1	3%	5	16%	7	22%
6 th	1	3%	0	.	4	13%	1	3%
7 th	0	.	0	.	3	9%	0	.
8 th	0	.	0	.	2	6%	1	3%
9 th	0	.	0	.	1	3%	0	.
10 th	0	.	0	.	1	3%	0	.
11 th	0	.	0	.	0	.	0	.
12 th	0	.	0	.	1	3%	0	.
13 th	0	.	0	.	0	.	0	.
14 th	0	.	0	.	0	.	1	3%
15 th	0	.	0	.	1	3%	0	.

Note: Included in the count of multiple admissions are those admitted to Secure Detention (Sec. Det.), Level III, Level IV, Level V, and Division of Family Services and Child Mental Health programs that provide residential services which are classified by DSCYF as crisis bed; mental health; residential group care; treatment center; residential Interagency Collaborative Team; residential treatment, mental health; and residential treatment, substance abuse.

Reading this table: This table shows that 78 percent of youth admitted to the Ferris School during the third quarter of 2008 had prior admissions to secure detention, 97 percent to Level V, 69 percent to Level IV, and 75 percent to Level III. All youth without prior Level V admissions had prior admissions to secure detention.

Leading Charge at Admission, Third Quarter 2008.

Sentenced admissions	Total	<u>Race</u>	
		White	Minority
Conspiracy in the second degree	1	0	1
Criminal contempt	1	1	0
Criminal mischief, class G felony	1	0	1
Criminal mischief, unclassified misdemeanor	1	0	1
Escape in the third degree	1	1	0
Possession of a deadly weapon by a person prohibited	1	1	0
Possession of a deadly weapon by a person prohibited, firearm	3	0	3
Possession of a firearm during the commission of a felony	1	1	0
Possession of drug paraphernalia	1	1	0
Possession or use of narcotics	2	0	2
Possession with intent to deliver narcotics	2	1	1
Possession with intent to deliver non-narcotics	1	1	0
Receiving stolen property, felony	1	0	1
Reckless endangering in the first degree	1	0	1
Robbery in the first degree	1	0	1
Robbery in the second degree	1	0	1
Tampering with physical evidence	1	0	1
Terroristic threatening, misdemeanor	1	0	1
Violation of probation	9	1	8
Total	32	8	24

Crime Category at Admission, Third Quarter 2008.

Category	Number	Percent
Violent felony	7	22
Violent misdemeanor	3	9
Non-violent felony	8	25
Non-violent misdemeanor	5	16
Probation violation	9	28
Total	32	100

Length of Stay on September 30, 2008.

LOS in intervals	Youth	Length of Stay		
	Number	Mean	Median	Maximum
1 to 3 days	0	.	.	.
4 to 14 days	4	8	8	13
15 to 29 days	7	24	26	27
30 to 59 days	9	45	48	55
60 to 119 days	23	91	90	118
120 to 179 days	18	148	149	177
180 plus days	19	232	202	370
Summary	80	122	118	370

Legal Status by Average LOS at Snapshot on September 30, 2008.

	Aftercare Revocation		Sentenced		Total	
	No.	LOS	No.	LOS	No.	LOS
Family Court	0	.	80	122	80	122
30 days or less	0	.	11	18	11	18
31 days or more	0	.	69	139	69	139
Superior Court	0	.	0	.	0	.
120 days or less	0	.	0	.	0	.
121 days or more	0	.	0	.	0	.
Total	0	.	80	122	80	122

Population Demographics on September 30, 2008.

Race/ethnicity and age	Total	
	Number	Percent
African American		
13	1	1
14	3	4
15	16	20
16	21	26
17	13	16
18	3	4
Subtotal	57	71
Hispanic		
17	1	1
Subtotal	1	1
White		
15	1	1
16	5	6
17	15	19
18	1	1
Subtotal	22	28
Total	80	100

Youth's Involvement on September 30, 2008.

Sentenced	No.	LOS
Aftercare	55	122
Child Mental Health	7	123
Division of Family Services	8	120
Probation	14	136
Serious Juvenile Offender and Comprehensive Aftercare Program	1	83
Indefinite sentence	48	113
Mandatory sentence	32	138
Family Court	80	122
Superior Court	0	.

Releases, Third Quarter 2008.

To whom released/program	Number	Percent	LOS in days	
			Mean	Maximum
CMH, Children and Family First	1	3	37	37
Mowlds Cottage	28	88	192	310
Parent	3	9	243	345
Total	32	100	192	345

Legal Status by Average LOS at Release, Third Quarter 2008.

	Aftercare Revocation		Sentenced		Total	
	No.	LOS	No.	LOS	No.	LOS
Family Court	0	.	32	192	32	192
30 days or less	0	.	0	.	0	.
31 days or more	0	.	32	192	32	192
Superior Court	0	.	0	.	0	.
120 days or less	0	.	0	.	0	.
121 days or more	0	.	0	.	0	.
Total	0	.	32	192	32	192

Crime Category at Release, Third Quarter 2008.

Category	Number	Percent	LOS in days		
			Minimum	Mean	Maximum
Violent felony	11	34	107	209	345
Violent misdemeanor	1	3	162	162	162
Non-violent felony	9	28	37	177	220
Non-violent misdemeanor	4	13	164	183	211
Probation violation	7	22	158	195	304
Total	32	100	37	192	345

Distribution of Ferris School Releases by LOS, Third Quarter 2008.