



STATE OF DELAWARE  
EXECUTIVE DEPARTMENT  
OFFICE OF MANAGEMENT AND BUDGET

To: John Frazer  
From: Jorge Rodríguez-Labarca  
Date: September 26, 2008  
Subject: Second Quarter 2008 Ferris School Status Report

---

*Admissions:* There were 35 admissions during the second quarter of 2008.

Admission demographics: Of the 35 admissions during the second quarter of 2008, 19 were African American, 1 was Hispanic, and 15 were white.

*Leading charges at admission:* The most frequent leading charges at admission for the second quarter were: violation of probation, 8; and, burglary in the third degree, 5. Forty-nine percent, or 17 youth, were admitted for violent felonies.

*Length of stay:* On June 30, there were 80 youth at the Ferris School for Boys with an average length of stay (LOS) of 107 days, a median LOS of 104 days, and a maximum LOS of 301 days.

On June 30, there were 80 Family Court youth with an average LOS of 107 days.

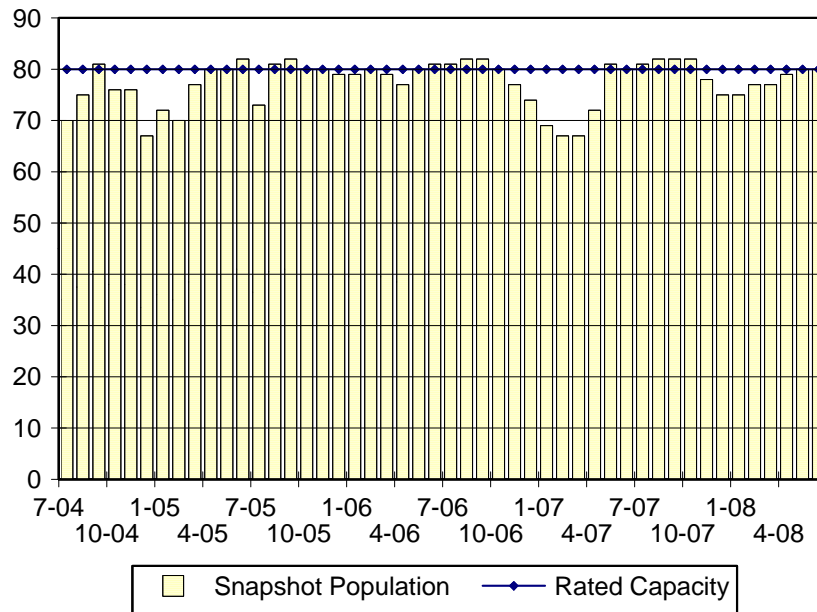
*Snapshot demographics:* Of the 80 youth at the Ferris School for Boys, there were 52 African American, 1 was Hispanic and 27 white.

*Youth's status:* On June 30, there were 55 youth serving indefinite sentences, 10 were serving 6 month mandatory sentences, and 15 were serving 12 month mandatory sentences.

*Releases:* 34 youth were released during the second quarter of 2008 with an average LOS of 224 days and a maximum LOS at release of 395 days.

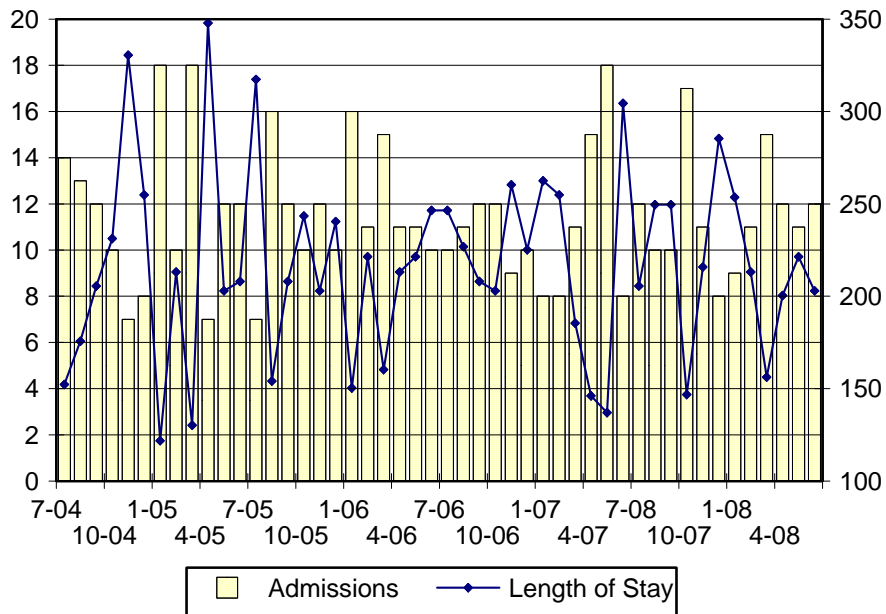


Ferris School Snapshot Population and Rated Capacity



Snapshot populations are taken at the end of any given month.

Ferris School Admissions and Time at Ferris School



Length of Stay: Average length of stay in days at the Ferris School given monthly admissions and populations.

## Admissions, Second Quarter 2008.

Month	Number	Percent
April	12	34
May	11	31
June	12	34
Total	35	100

## Admission Demographics, Second Quarter 2008.

Race/ethnicity and age	Total	
	Number	Percent
African American		
13	1	3
14	3	9
15	4	11
16	7	20
17	4	11
Subtotal	19	54
Hispanic		
17	1	3
Subtotal	1	3
White		
16	3	9
17	11	31
18	1	3
Subtotal	15	43
Total	35	100

Admissions Profile for  
Second Quarter 2008 Ferris School Admittees.

Admissions	<u>Youth</u>			<u>Admissions</u>		
	Number	Percent	Cum. %	Number	Percent	Cum. %
Total	35	100%	100%	246	100%	100%
First admission	1	3%	3%	1	0%	0%
Multiple admissions	34	97%	100%	245	100%	100%
2 <sup>nd</sup>	5	14%	17%	10	4%	4%
3 <sup>rd</sup>	4	11%	29%	12	5%	9%
4 <sup>th</sup>	4	11%	40%	16	7%	16%
5 <sup>th</sup>	0	.	40%	0	.	16%
6 <sup>th</sup>	4	11%	51%	24	10%	26%
7 <sup>th</sup>	4	11%	63%	28	11%	37%
8 <sup>th</sup>	2	6%	69%	16	7%	43%
9 <sup>th</sup>	1	3%	71%	9	4%	47%
10 <sup>th</sup>	5	14%	86%	50	20%	67%
11 <sup>th</sup>	1	3%	89%	11	4%	72%
12 <sup>th</sup>	0	.	89%	0	.	72%
13 <sup>th</sup>	1	3%	91%	13	5%	77%
14 <sup>th</sup>	0	.	91%	0	.	77%
15 <sup>th</sup>	1	3%	94%	15	6%	83%
...	.	.	94%	.	.	83%
19 <sup>th</sup>	1	3%	97%	19	8%	91%
...	.	.	97%	.	.	91%
22 <sup>nd</sup>	1	3%	100%	22	9%	100%

Note: First admission means that, heretofore, a juvenile had never been admitted to Secure Detention, Level III, Level IV, Level V, or Division of Family Services (DFS) and Child Mental Health (CMH) programs that provide residential services. Included in the count of multiple admissions are those admitted to Secure Detention, Level III, Level IV, Level V, and DFS and CMH programs that provide residential services which are classified by DSCYF as crisis bed; mental health; residential group care; treatment center; residential Interagency Collaborative Team; residential treatment, mental health; and residential treatment, substance abuse.

**Admission Profile by Dispositional  
Level for Second Quarter 2008 Ferris School Admittees.**

Admissions	Number and percent of youth							
	Sec. Det.		L. V		L. IV		L. III	
	N.	%	N.	%	N.	%	N.	%
Total	35	100%	35	100%	35	97%	35	100%
No prior admissions	5	14%	13	37%	14	40%	10	29%
Multiple admissions	30	86%	22	63%	21	57%	25	71%
2 <sup>nd</sup>	7	20%	16	46%	1	3%	6	17%
3 <sup>rd</sup>	10	29%	4	11%	5	14%	6	17%
4 <sup>th</sup>	6	17%	1	3%	2	6%	5	14%
5 <sup>th</sup>	3	9%	0	.	5	14%	1	3%
6 <sup>th</sup>	2	6%	1	3%	2	6%	3	9%
7 <sup>th</sup>	2	6%	0	.	2	6%	0	.
8 <sup>th</sup>	0	.	0	.	2	6%	0	.
9 <sup>th</sup>	0	.	0	.	1	3%	1	3%
10 <sup>th</sup>	0	.	0	.	0	.	1	3%
11 <sup>th</sup>	0	.	0	.	1	3%	0	.
12 <sup>th</sup>	0	.	0	.	0	.	1	3%
13 <sup>th</sup>	0	.	0	.	0	.	0	.
14 <sup>th</sup>	0	.	0	.	0	.	0	.
15 <sup>th</sup>	0	.	0	.	0	.	1	3%

Note: Included in the count of multiple admissions are those admitted to Secure Detention (Sec. Det.), Level III, Level IV, Level V, and Division of Family Services and Child Mental Health programs that provide residential services which are classified by DSCYF as crisis bed; mental health; residential group care; treatment center; residential Interagency Collaborative Team; residential treatment, mental health; and residential treatment, substance abuse.

Reading this table: This table shows that 86 percent of youth admitted to the Ferris School during the second quarter of 2008 had prior admissions to secure detention, 63 percent to Level V, 60 percent to Level IV, and 71 percent to Level III. All youth without prior Level V admissions had prior admissions to secure detention.

### Leading Charge at Admission, Second Quarter 2008.

Sentenced admissions	Total	<u>Race</u>	
		White	Minority
Arson in the third degree	1	1	0
Assault in the third degree	1	1	0
Burglary in the second degree	4	2	2
Burglary in the third degree	5	3	2
Failure to register as a sex offender	1	0	1
Menacing, aggravated	1	0	1
Possession of a deadly weapon by person prohibited, firearm	1	0	1
Possession of a deadly weapon during commission of a felony	4	2	2
Possession or use of narcotics	1	0	1
Robbery in the first degree	4	3	1
Robbery in the second degree	3	0	3
Violation of probation	8	3	5
Total	35	15	20

Crime Category at Admission, Second Quarter 2008.

Category	Number	Percent
Violent felony	17	49
Violent misdemeanor	2	6
Non-violent felony	8	23
Probation violation	8	23
Total	35	100

Length of Stay on June 30, 2008.

LOS in intervals	Youth	Length of Stay		
	Number	Mean	Median	Maximum
1 to 3 days	0	.	.	.
4 to 14 days	6	8	8	12
15 to 29 days	6	25	26	26
30 to 59 days	10	41	40	54
60 to 119 days	29	92	95	117
120 to 179 days	19	147	140	176
180 plus days	10	245	253	301
Summary	80	107	104	301

Legal Status by Average LOS at Snapshot on June 30, 2008.

	Aftercare Revocation		Sentenced		Total	
	No.	LOS	No.	LOS	No.	LOS
Family Court	0	.	80	107	80	107
30 days or less	0	.	12	17	12	17
31 days or more	0	.	68	123	68	123
Superior Court	0	.	0	.	0	.
120 days or less	0	.	0	.	0	.
121 days or more	0	.	0	.	0	.
Total	0	.	80	107	80	107

### Population Demographics on June 30, 2008.

Race/ethnicity and age	Total	
	Number	Percent
African American		
13	2	3
14	3	4
15	12	15
16	19	24
17	16	20
Subtotal	52	65
Hispanic		
17	1	1
Subtotal	1	1
White		
16	6	8
17	18	23
18	3	4
Subtotal	27	34
Total	80	100

### Youth's Involvement on June 30, 2008.

Sentenced	No.	LOS
Aftercare	45	91
Child Mental Health	8	77
Division of Family Services	7	68
Probation	9	65
Serious Juvenile Offender and Comprehensive Aftercare Program	1	47
Indefinite sentence	55	106
Mandatory sentence	25	109
Family Court	80	107
Superior Court	0	.



## Releases, Second Quarter 2008.

To whom released/program	Number	Percent	<u>LOS in days</u>	
			Mean	Maximum
New Jersey authorities	1	3	203	203
Mowlds Cottage	31	91	217	395
Parent	2	6	337	370
Total	34	100	224	395

## Legal Status by Average LOS at Release, Second Quarter 2008.

	<u>Aftercare Revocation</u>		<u>Sentenced</u>		<u>Total</u>	
	No.	LOS	No.	LOS	No.	LOS
Family Court	0	.	34	224	34	224
30 days or less	0	.	0	.	0	.
31 days or more	0	.	34	224	34	224
Superior Court	0	.	0	.	0	.
120 days or less	0	.	0	.	0	.
121 days or more	0	.	0	.	0	.
Total	0	.	34	224	34	224

## Crime Category at Release, Second Quarter 2008.

Category	Number	Percent	<u>LOS in days</u>		
			Minimum	Mean	Maximum
Violent felony	16	47	135	252	395
Violent misdemeanor	6	18	157	183	214
Non-violent misdemeanor	4	12	148	184	214
Probation violation	8	24	143	216	323
Total	34	100	135	224	395

Distribution of Ferris School Releases by LOS, Second Quarter 2008.