



STATE OF DELAWARE  
EXECUTIVE DEPARTMENT  
OFFICE OF MANAGEMENT AND BUDGET

To: John Frazer  
From: Jorge Rodríguez-Labarca  
Date: May 16, 2008  
Subject: First Quarter 2008 Ferris School Status Report

---

*Admissions:* There were 36 admissions during the first quarter of 2008.

Admission demographics: Of the 36 admissions during the first quarter of 2008, 25 were African American and 11 were white.

*Leading charges at admission:* The most frequent leading charges at admission for the first quarter were: violation of probation, 6; and, possession of a firearm by a person prohibited, 4. Thirty-three percent, or 12 youth, were admitted for violent felonies.

*Length of stay:* On March 31, there were 78 youth at the Ferris School for Boys with an average length of stay (LOS) of 118 days, a median LOS of 114 days, and a maximum LOS of 474 days.

On March 31, there were 78 Family Court youth with an average LOS of 118 days.

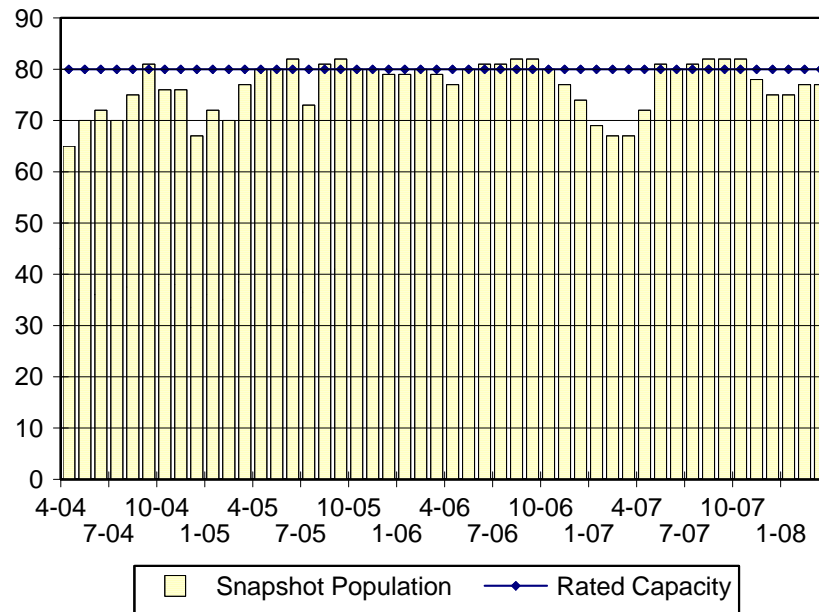
*Snapshot demographics:* Of the 78 youth at the Ferris School for Boys, there were 56 African American and 22 white.

*Youth's status:* On March 31, there were 57 youth serving indefinite sentences, 11 were serving 6 month mandatory sentences, and 10 were serving 12 month mandatory sentences.

*Releases:* 31 youth were released during the first quarter of 2008 with an average LOS of 221 days and a maximum LOS at release of 449 days.

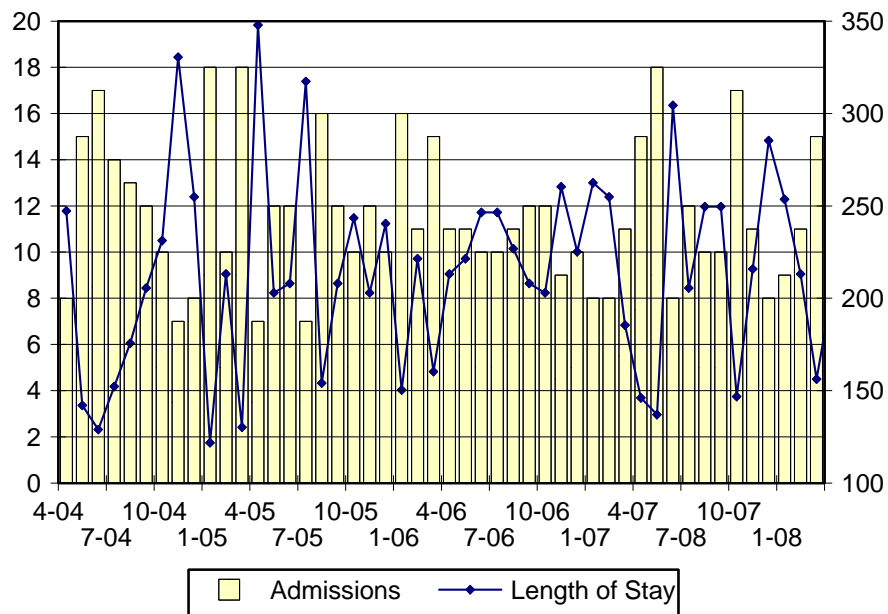


### Ferris School Snapshot Population and Rated Capacity



Snapshot populations are taken at the end of any given month.

### Ferris School Admissions and Time at Ferris School



Length of Stay: Average length of stay in days at the Ferris School given monthly admissions and populations.

## Admissions, First Quarter 2008.

Month	Number	Percent
January	9	25
February	11	31
March	16	44
Total	36	100

## Admission Demographics, First Quarter 2008.

Race/ethnicity and age	<u>Total</u>	
	Number	Percent
African American		
13	1	3
15	5	14
16	8	22
17	11	31
Subtotal	25	69
White		
16	3	8
17	7	19
18	1	3
Subtotal	11	31
Total	36	100

Admissions Profile for  
First Quarter 2008 Ferris School Admittees.

Admissions	<u>Youth</u>			<u>Admissions</u>		
	Number	Percent	Cum. %	Number	Percent	Cum. %
Total	36	100%	100%	261	100%	100%
First admission	0	.	.	0	.	.
Multiple admissions	36	100%	100%	261	100%	100%
2 <sup>nd</sup>	7	19%	19%	14	5%	5%
3 <sup>rd</sup>	1	3%	22%	3	1%	7%
4 <sup>th</sup>	1	3%	25%	4	2%	8%
5 <sup>th</sup>	3	8%	33%	15	6%	14%
6 <sup>th</sup>	5	14%	47%	30	11%	25%
7 <sup>th</sup>	5	14%	61%	35	13%	39%
8 <sup>th</sup>	2	6%	67%	16	6%	45%
9 <sup>th</sup>	6	17%	83%	54	21%	66%
10 <sup>th</sup>	0	.	83%	0	.	66%
11 <sup>th</sup>	2	6%	89%	22	8%	74%
12 <sup>th</sup>	1	3%	92%	12	5%	79%
13 <sup>th</sup>	1	3%	94%	13	5%	84%
14 <sup>th</sup>	0	.	94%	0	.	84%
15 <sup>th</sup>	0	.	94%	0	.	84%
16 <sup>th</sup>	0	.	94%	0	.	84%
17 <sup>th</sup>	1	3%	97%	17	7%	90%
...	.	.	97%	.	.	90%
26 <sup>th</sup>	1	3%	100%	26	10%	100%

Note: First admission means that, heretofore, a juvenile had never been admitted to Secure Detention, Level III, Level IV, Level V, or Division of Family Services (DFS) and Child Mental Health (CMH) programs that provide residential services. Included in the count of multiple admissions are those admitted to Secure Detention, Level III, Level IV, Level V, and DFS and CMH programs that provide residential services which are classified by DSCYF as crisis bed; mental health; residential group care; treatment center; residential Interagency Collaborative Team; residential treatment, mental health; and residential treatment, substance abuse.

**Admission Profile by Dispositional  
Level for First Quarter 2008 Ferris School Admittees.**

Admissions	Number and percent of youth							
	Sec. Det.		L. V		L. IV		L. III	
	N.	%	N.	%	N.	%	N.	%
Total	36	100%	36	100%	36	94%	36	100%
No prior admissions	7	19%	19	53%	9	25%	6	17%
Multiple admissions	29	81%	17	47%	27	69%	30	83%
2 <sup>nd</sup>	6	17%	12	33%	4	11%	6	17%
3 <sup>rd</sup>	4	11%	3	8%	5	14%	8	22%
4 <sup>th</sup>	10	28%	2	6%	7	19%	6	17%
5 <sup>th</sup>	5	14%	0	0%	4	11%	7	19%
6 <sup>th</sup>	1	3%	0	0%	3	8%	0	0%
7 <sup>th</sup>	0	0%	0	0%	1	3%	2	6%
8 <sup>th</sup>	1	3%	0	.	1	3%	0	0%

Note: Included in the count of multiple admissions are those admitted to Secure Detention (Sec. Det.), Level III, Level IV, Level V, and Division of Family Services and Child Mental Health programs that provide residential services which are classified by DSCYF as crisis bed; mental health; residential group care; treatment center; residential Interagency Collaborative Team; residential treatment, mental health; and residential treatment, substance abuse.

Reading this table: This table shows that 81 percent of youth admitted to the Ferris School during the first quarter of 2008 had prior admissions to secure detention, 47 percent to Level V, 69 percent to Level IV, and 83 percent to Level III. All youth without prior Level V admissions had prior admissions to secure detention.

### Leading Charge at Admission, First Quarter 2008.

Sentenced admissions	Total	<u>Race</u>	
		White	Minority
Assault in the third degree	1	1	0
Burglary in the first degree	1	0	1
Burglary in the second degree	3	0	3
Burglary in the third degree	2	2	0
Criminal mischief, class G felony	1	1	0
Criminal trespass in the third degree	1	0	1
Escape in the third degree	2	1	1
Maintaining a vehicle for keeping controlled substances	1	0	1
Offensive touching, attempted	1	0	1
Possession of a deadly weapon by person prohibited, firearm	4	0	4
Possession of shoplifters' tools or instruments	1	0	1
Possession or use of a non-narcotic	1	1	0
Possession with intent to deliver narcotics	3	0	3
Receiving stolen property, misdemeanor	2	2	0
Robbery in the first degree	2	1	1
Robbery in the second degree	3	0	3
Terroristic threatening, misdemeanor	1	1	0
Violation of probation	6	1	5
Total	36	11	25

### Crime Category at Admission, First Quarter 2008.

Category	Number	Percent
Violent felony	12	33
Violent misdemeanor	2	6
Non-violent felony	9	25
Non-violent misdemeanor	6	17
Probation violation	6	17
Unclassified violation	1	3
Total	36	100

### Length of Stay on March 31, 2008.

LOS in intervals	Youth	Length of Stay		
	Number	Mean	Median	Maximum
1 to 3 days	0	.	.	.
4 to 14 days	9	9	12	13
15 to 29 days	7	22	20	26
30 to 59 days	11	43	41	55
60 to 119 days	16	94	94	119
120 to 179 days	19	152	151	173
180 plus days	16	256	236	474
Summary	78	118	114	474

### Legal Status by Average LOS at Snapshot on March 31, 2008.

	Aftercare Revocation		Sentenced		Total	
	No.	LOS	No.	LOS	No.	LOS
Family Court	0	.	78	118	78	118
30 days or less	0	.	16	15	16	15
31 days or more	0	.	62	144	62	144
Superior Court	0	.	0	.	0	.
120 days or less	0	.	0	.	0	.
121 days or more	0	.	0	.	0	.
Total	0	.	78	118	78	118

Population Demographics on March 31, 2008.

Race/ethnicity and age	Total	
	Number	Percent
African American		
13	2	3
14	1	1
15	12	15
16	16	21
17	24	31
18	1	1
Subtotal	56	72
White		
15	3	4
16	6	8
17	10	13
18	3	4
Subtotal	22	28
Total	78	100

Youth's Involvement on March 31, 2008.

Sentenced	No.	LOS
Aftercare	2	206
Child Mental Health	3	145
Division of Family Services	3	82
Serious Juvenile Offender and Comprehensive Aftercare Program	9	128
Indefinite sentence	57	106
Mandatory sentence	21	157
Family Court	78	118
Superior Court	0	.



## Releases, First Quarter 2008.

To whom released/program	Number	Percent	<u>LOS in days</u>	
			Mean	Maximum
Chesapeake Youth Center	1	3	133	133
Mowlds Cottage	27	84	223	449
Parent	3	10	234	390
Total	31	100	221	449

## Legal Status by Average LOS at Release, First Quarter 2008.

	<u>Aftercare Revocation</u>		<u>Sentenced</u>		<u>Total</u>	
	No.	LOS	No.	LOS	No.	LOS
Family Court	0	.	31	221	31	221
30 days or less	0	.	0	.	0	.
31 days or more	0	.	31	221	31	221
Superior Court	0	.	0	.	0	.
120 days or less	0	.	0	.	0	.
121 days or more	0	.	0	.	0	.
Total	0	.	31	221	31	221

## Crime Category at Release, First Quarter 2008.

Category	Number	Percent	<u>LOS in days</u>		
			Minimum	Mean	Maximum
Violent felony	18	58	141	253	449
Violent misdemeanor	1	3	148	148	148
Non-violent misdemeanor	5	16	133	178	232
Probation violation	7	23	141	180	260
Total	31	100	133	221	449

Distribution of Ferris School Releases by LOS, First Quarter 2008.

