



STATE OF DELAWARE  
EXECUTIVE DEPARTMENT  
OFFICE OF MANAGEMENT AND BUDGET

To: John Frazer  
From: Jorge Rodríguez-Labarca  
Date: March 4, 2008  
Subject: Fourth Quarter 2007 Ferris School Status Report

---

*Admissions:* There were 36 admissions during the fourth quarter of 2007.

Admission demographics: Of the 36 admissions during the fourth quarter of 2007, 26 were African American, nine were white, and one was Hispanic.

*Leading charges at admission:* The most frequent leading charges at admission for the fourth quarter were: robbery in the first degree and violation of probation, 6. Forty-two percent, or 15 youth, were admitted for violent felonies.

*Length of stay:* On December 31, there were 75 youth at the Ferris School for Boys with an average length of stay (LOS) of 125 days, a median LOS of 96 days, and a maximum LOS of 383 days.

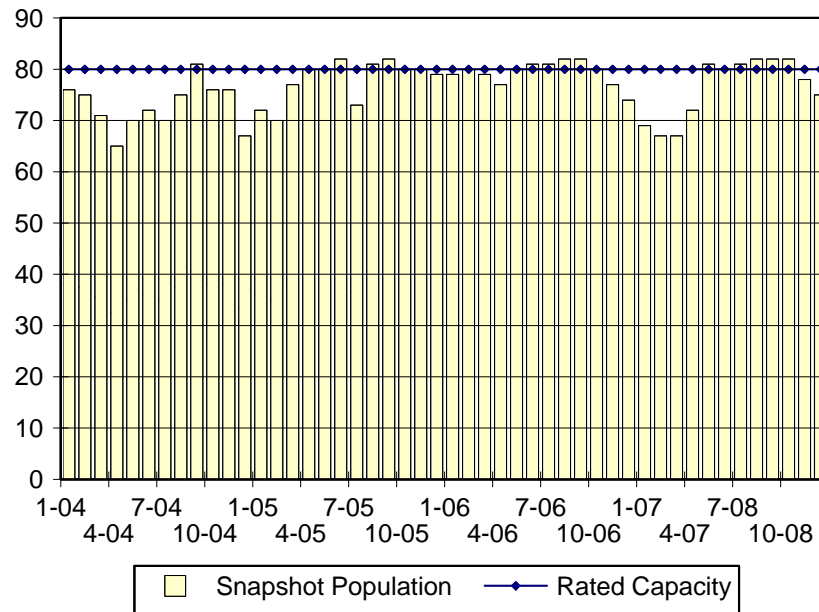
On December 31, there were 75 Family Court youth with an average LOS of 125 days.

*Snapshot demographics:* Of the 75 youth at the Ferris School for Boys, there were 54 African American, 20 white, and one Hispanic.

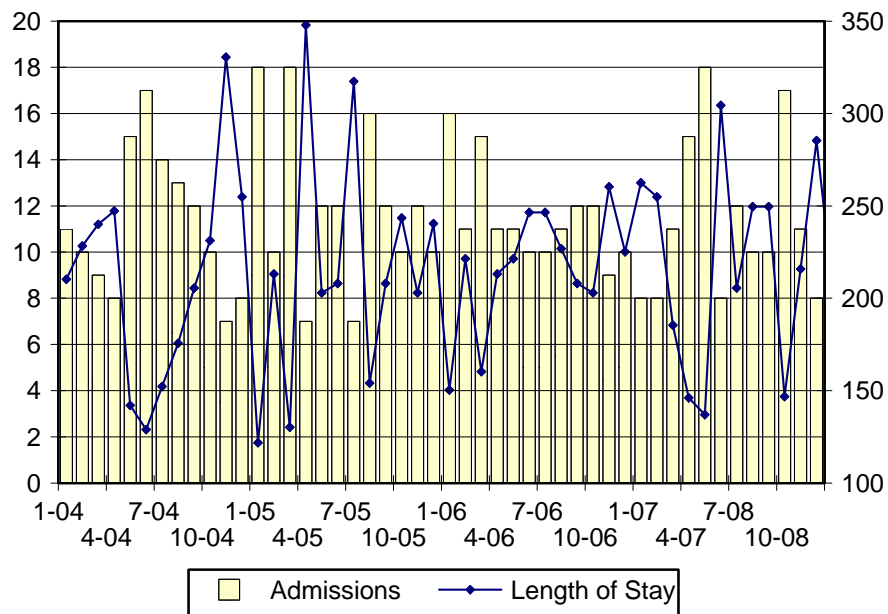
*Youth's status:* On December 31, there were 48 youth serving indefinite sentences and 27 serving mandatory sentences.

*Releases:* 43 youth were released during the fourth quarter of 2007 with an average LOS of 197 days and a maximum LOS at release of 671 days.



Ferris School Snapshot Population and Rated Capacity

Snapshot populations are taken at the end of any given month.

Ferris School Admissions and Time at Ferris School

Length of Stay: Average length of stay in days at the Ferris School given monthly admissions and populations.

## Admissions, Fourth Quarter 2007.

Month	Number	Percent
October	17	47
November	11	31
December	8	22
Total	36	100

## Admission Demographics, Fourth Quarter 2007.

Race/ethnicity and age	Total	
	Number	Percent
African American		
13	1	3
15	6	17
16	9	25
17	10	28
Subtotal	26	72
Hispanic		
17	1	3
Subtotal	1	3
White		
15	1	3
16	3	8
17	3	8
18	2	6
Subtotal	9	25
Total	36	100

Admissions Profile for  
Fourth Quarter 2007 Ferris School Admittees.

Admissions	<u>Youth</u>			<u>Admissions</u>		
	Number	Percent	Cum. %	Number	Percent	Cum. %
Total	36	100%	100%	219	100%	100%
First admission	0	.	0%	0	.	0%
Multiple admissions	36	100%	100%	219	100%	100%
2 <sup>nd</sup>	4	11%	11%	8	4%	4%
3 <sup>rd</sup>	6	17%	28%	18	8%	12%
4 <sup>th</sup>	6	17%	44%	24	11%	23%
5 <sup>th</sup>	3	8%	53%	15	7%	30%
6 <sup>th</sup>	4	11%	64%	24	11%	41%
7 <sup>th</sup>	2	6%	69%	14	6%	47%
8 <sup>th</sup>	4	11%	81%	32	15%	62%
9 <sup>th</sup>	1	3%	83%	9	4%	66%
10 <sup>th</sup>	1	3%	86%	10	5%	70%
11 <sup>th</sup>	2	6%	92%	22	10%	80%
12 <sup>th</sup>	0	.	92%	0	.	80%
13 <sup>th</sup>	0	.	92%	0	.	80%
14 <sup>th</sup>	2	6%	97%	28	13%	93%
15 <sup>th</sup>	1	3%	100%	15	7%	100%

Note: First admission means that, heretofore, a juvenile had never been admitted to Secure Detention, Level III Residential, Level IV, Level V, or Division of Family Services (DFS) and Child Mental Health (CMH) programs that provide residential services. Included in the count of multiple admissions are those admitted to Secure Detention, Level III Residential, Level IV, Level V, and DFS and CMH programs that provide residential services which are classified by DSCYF as crisis bed; mental health; residential group care; treatment center; residential Interagency Collaborative Team; residential treatment, mental health; and residential treatment, substance abuse.

**Admission Profile by Dispositional  
Level for Fourth Quarter 2007 Ferris School Admittees.**

Admissions	Number and percent of youth							
	<u>Sec. Det.</u>		<u>L. V</u>		<u>L. IV</u>		<u>L. IIIR</u>	
	N.	%	N.	%	N.	%	N.	%
Total	36	100%	36	100%	36	100%	36	100%
No prior admissions	6	17%	7	19%	13	36%	8	22%
Multiple admissions	30	83%	29	81%	23	64%	28	78%
2 <sup>nd</sup>	12	33%	17	47%	8	22%	4	11%
3 <sup>rd</sup>	10	28%	5	14%	10	28%	10	28%
4 <sup>th</sup>	2	6%	6	17%	3	8%	8	22%
5 <sup>th</sup>	2	6%	1	3%	1	3%	3	8%
6 <sup>th</sup>	0	.	0	.	1	3%	2	6%
7 <sup>th</sup>	2	6%	0	.	0	.	1	3%
8 <sup>th</sup>	1	3%	0	.	0	.	0	.
9 <sup>th</sup>	0	.	0	.	0	.	0	.
10 <sup>th</sup>	0	.	0	.	0	.	0	.
11 <sup>th</sup>	1	3%	0	.	0	.	0	.

Note: Included in the count of multiple admissions are those admitted to Secure Detention (Sec. Det.), Level III Residential (L. IIIR), Level IV, Level V, and Division of Family Services and Child Mental Health programs that provide residential services which are classified by DSCYF as crisis bed; mental health; residential group care; treatment center; residential Interagency Collaborative Team; residential treatment, mental health; and residential treatment, substance abuse.

Reading this table: This table shows that 83 percent of youth admitted to the Ferris School during the fourth quarter of 2007 had prior admissions to secure detention, 81 percent to Level V, 64 percent to Level IV, and 78 percent to Level IIIR. All youth without prior Level V admissions had prior admissions to secure detention.

### Leading Charge at Admission, Fourth Quarter 2007.

Sentenced admissions	Total	Race	
		White	Minority
Burglary in the second degree	2	0	2
Burglary in the third degree	2	1	1
Conspiracy in the second degree	2	0	2
Criminal mischief, unclassified misdemeanor	2	2	0
Escape in the third degree	1	0	1
Own or use an animal for the purpose of fighting	1	0	1
Possession of a deadly weapon by a person prohibited, firearm	2	0	2
Possession or use of a non-narcotic	1	1	0
Possession or use of narcotics	1	0	1
Possession with intent to deliver narcotics	2	0	2
Possession with intent to deliver non-narcotics	1	1	0
Receiving a stolen firearm	1	1	0
Receiving stolen property, felony	1	1	0
Resisting arrest	1	0	1
Robbery in the first degree	6	1	5
Robbery in the first degree, attempted	1	0	1
Robbery in the second degree	2	0	2
Theft, felony	1	0	1
Violation of probation	6	1	5
Total	36	9	27

Crime Category at Admission, Fourth Quarter 2007.

Category	Number	Percent
Violent felony	15	42
Violent misdemeanor	1	3
Non-violent felony	9	25
Non-violent misdemeanor	5	14
Probation violation	6	17
Total	36	100

Length of Stay on December 31, 2007.

LOS in intervals	Youth	Length of Stay		
	Number	Mean	Median	Maximum
1 to 3 days	0	.	.	.
4 to 14 days	2	13	13	14
15 to 29 days	6	25	27	28
30 to 59 days	7	44	46	57
60 to 119 days	29	83	81	119
120 to 179 days	15	148	138	176
180 plus days	16	267	230	383
Summary	75	125	96	383

Legal Status by Average LOS at Snapshot on December 31, 2007.

	Aftercare Revocation		Sentenced		Total	
	No.	LOS	No.	LOS	No.	LOS
Family Court	0	.	75	125	75	125
30 days or less	0	.	8	22	8	22
31 days or more	0	.	67	137	67	137
Superior Court	0	.	0	.	0	.
120 days or less	0	.	0	.	0	.
121 days or more	0	.	0	.	0	.
Total	0	.	75	125	75	125

### Population Demographics on December 31, 2007.

Race/ethnicity and age	Total	
	Number	Percent
African American		
13	1	1
14	2	3
15	10	13
16	15	20
17	22	29
18	4	5
Subtotal	54	72
Hispanic		
17	1	1
Subtotal	1	1
White		
15	3	4
16	5	7
17	9	12
18	3	4
Subtotal	20	27
Total	75	100

### Youth's Involvement on December 31, 2007.

Sentenced	No.	LOS
Aftercare	2	156
Child Mental Health	5	137
Division of Family Services	3	195
Serious Juvenile Offender and Comprehensive Aftercare Program	16	141
Indefinite sentence	48	105
Mandatory sentence	27	161
Family Court	75	125
Superior Court	0	.

## Releases, Fourth Quarter 2007.

To whom released/program	Number	Percent	LOS in days	
			Mean	Maximum
Cove PREP	2	5	194	363
Mowlds Cottage	1	2	671	671
Parent	40	93	185	276
Total	43	100	197	671

## Legal Status by Average LOS at Release, Fourth Quarter 2007.

	Aftercare Revocation		Sentenced		Total	
	No.	LOS	No.	LOS	No.	LOS
Family Court	0	.	43	197	43	197
30 days or less	0	.	1	25	1	25
31 days or more	0	.	42	201	42	201
Superior Court	0	.	0	.	0	.
120 days or less	0	.	0	.	0	.
121 days or more	0	.	0	.	0	.
Total	0	.	43	197	43	197

## Crime Category at Release, Fourth Quarter 2007.

Category	Number	Percent	LOS in days		
			Minimum	Mean	Maximum
Violent felony	18	42	25	220	671
Violent misdemeanor	1	2	141	141	141
Non-violent felony	7	16	190	214	255
Non-violent misdemeanor	5	12	126	174	199
Probation violation	12	28	56	167	276
Total	43	100	25	197	671

Distribution of Ferris School Releases by LOS, Fourth Quarter 2007.