



STATE OF DELAWARE  
EXECUTIVE DEPARTMENT  
OFFICE OF MANAGEMENT AND BUDGET

To: John Frazer  
From: Jorge Rodríguez-Labarca  
Date: December 14, 2007  
Subject: Second Quarter 2007 Ferris School Status Report

---

*Admissions:* There were 41 admissions during the Second quarter of 2007.

Admission demographics: Of the 41 admissions during the second quarter of 2007, 26 were African American and fifteen white.

*Leading charges at admission:* The most frequent leading charges at admission for the second quarter were: violation of probation, 11; possession with intent to deliver narcotics, 6; and robbery in the first degree, 5. Forty-one percent, or 17 youth, were admitted for violent felonies.

*Length of stay:* On June 30, there were 80 youth at the Ferris School for Boys with an average length of stay (LOS) of 116 days, a median LOS of 89 days, and a maximum LOS of 562 days.

On June 30, there were 80 Family Court youth with an average LOS of 116 days.

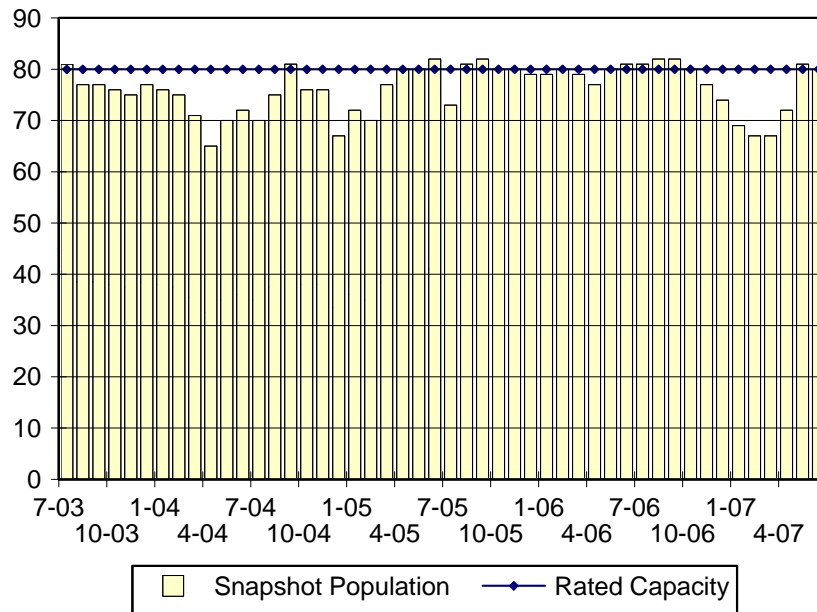
*Snapshot demographics:* Of the 80 youth at the Ferris School for Boys, there were 52 African American, 27 white and one Hispanic.

*Youth's status:* On June 30, there were 47 youth serving indefinite sentences and 33 serving mandatory sentences.

*Releases:* 28 youth were released during the second quarter of 2007 with an average LOS of 206 days and a maximum LOS at release of 372 days.

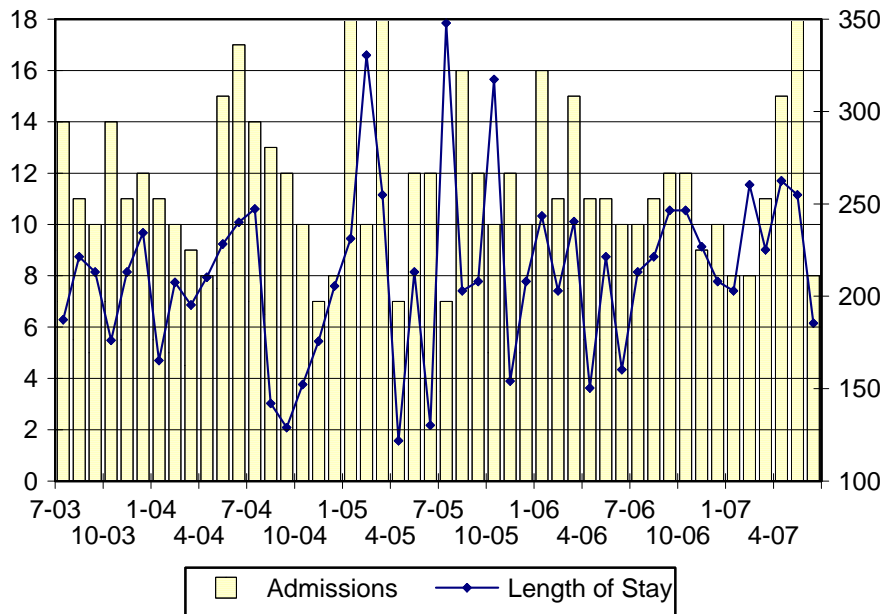


### Ferris School Snapshot Population and Rated Capacity



Snapshot populations are taken at the end of any given month.

### Ferris School Admissions and Time at Ferris School



Length of Stay: Average length of stay in days at the Ferris School given monthly admissions and populations.

## Admissions, Second Quarter 2007.

Month	Number	Percent
April	15	37
May	18	44
June	8	20
Total	41	100

## Admission Demographics, Second Quarter 2007.

Race/ethnicity and age	Total	
	Number	Percent
African American		
13	1	1
14	2	2
15	6	6
16	9	9
17	8	8
Subtotal	26	26
White		
15	2	2
16	5	5
17	8	8
Subtotal	15	15
Total	41	41

**Admissions Profile for  
Second Quarter 2007 Ferris School Admittees.**

Admissions	<u>Youth</u>			<u>Admissions</u>		
	Number	Percent	Cum. %	Number	Percent	Cum. %
Total	32	100%	100%	331	100%	100%
First admission	0	.	.	0	.	.
Multiple admissions	32	100%	100%	331	100%	100%
2 <sup>nd</sup>	1	3%	3%	2	1%	1%
3 <sup>rd</sup>	3	9%	13%	9	3%	3%
4 <sup>th</sup>	1	3%	16%	4	1%	5%
5 <sup>th</sup>	2	6%	22%	10	3%	8%
6 <sup>th</sup>	1	3%	25%	6	2%	9%
7 <sup>th</sup>	0	.	25%	0	.	9%
8 <sup>th</sup>	4	13%	38%	32	10%	19%
9 <sup>th</sup>	3	9%	47%	27	8%	27%
10 <sup>th</sup>	2	6%	53%	20	6%	33%
11 <sup>th</sup>	4	13%	66%	44	13%	47%
12 <sup>th</sup>	0	.	66%	0	.	47%
13 <sup>th</sup>	0	.	66%	0	.	47%
14 <sup>th</sup>	5	16%	81%	70	21%	68%
15 <sup>th</sup>	1	3%	84%	15	5%	72%
16 <sup>th</sup>	0	.	84%	0	.	72%
17 <sup>th</sup>	4	13%	97%	68	21%	93%
18 <sup>th</sup>	0	.	97%	0	.	93%
19 <sup>th</sup>	0	.	97%	0	.	93%
20 <sup>th</sup>	0	.	97%	0	.	93%
21 <sup>st</sup>	0	.	97%	0	.	93%
22 <sup>nd</sup>	0	.	97%	0	.	93%
23 <sup>rd</sup>	0	.	97%	0	.	93%
24 <sup>th</sup>	1	3%	100%	24	7%	100%

Note: First admission means that, heretofore, a juvenile had never been admitted to Secure Detention, Level III Residential, Level IV, Level V, or Division of Family Services (DFS) and Child Mental Health (CMH) programs that provide residential services. Included in the count of multiple admissions are those admitted to Secure Detention, Level III Residential, Level IV, Level V, and DFS and CMH programs that provide residential services which are classified by DSCYF as crisis bed; mental health; residential group care; treatment center; residential Interagency Collaborative Team; residential treatment, mental health; and residential treatment, substance abuse.

**Admission Profile by Dispositional  
Level for Second Quarter 2007 Ferris School Admittees.**

Admissions	Number and percent of youth							
	<u>Sec. Det.</u>		<u>L. V</u>		<u>L. IV</u>		<u>L. IIIR</u>	
	N.	%	N.	%	N.	%	N.	%
Total	32	100%	41	100%	30	87%	32	100%
No prior admissions	3	9%	9	22%	5	17%	4	13%
Multiple admissions	29	91%	32	78%	25	70%	28	88%
2 <sup>nd</sup>	6	19%	6	15%	5	17%	9	28%
3 <sup>rd</sup>	5	16%	7	17%	7	23%	3	9%
4 <sup>th</sup>	5	16%	8	20%	3	10%	5	16%
5 <sup>th</sup>	2	6%	7	17%	4	13%	0	.
6 <sup>th</sup>	5	16%	3	7%	2	7%	4	13%
7 <sup>th</sup>	3	9%	1	2%	3	0%	2	6%
8 <sup>th</sup>	2	6%	0	.	1	0%	1	3%
9 <sup>th</sup>	0	0%	0	.	2	0%	1	3%
10 <sup>th</sup>	0	.	0	.	0	.	2	6%
11 <sup>th</sup>	1	3%	0	.	0	.	0	.
12 <sup>th</sup>	0	.	0	.	0	.	0	.
13 <sup>th</sup>	0	.	0	.	0	.	0	.
14 <sup>th</sup>	0	.	0	.	0	.	1	3%

Note: Included in the count of multiple admissions are those admitted to Secure Detention (Sec. Det.), Level III Residential (L. IIIR), Level IV, Level V, and Division of Family Services and Child Mental Health programs that provide residential services which are classified by DSCYF as crisis bed; mental health; residential group care; treatment center; residential Interagency Collaborative Team; residential treatment, mental health; and residential treatment, substance abuse.

Reading this table: This table shows that 91 percent of youth admitted to the Ferris School during the second quarter of 2007 had prior admissions to secure detention, 78 percent to Level V, 83 percent to Level IV, and 88 percent to Level IIIR. All youth without prior Level V admissions had prior admissions to secure detention.

### Leading Charge at Admission, Second Quarter 2007.

Sentenced admissions	Total	Race	
		White	Minority
Assault in the third degree	1	1	0
Burglary in the second degree	2	1	1
Burglary in the second degree, attempted	1	0	1
Criminal impersonation	1	0	1
Escape in the third degree	1	1	0
Maintaining a vehicle for keeping controlled substances	1	1	0
Possession of a weapon in a safe school zone	1	0	1
Possession or use of narcotics	1	0	1
Possession with intent to deliver narcotics	6	0	6
Receiving a stolen firearm	1	0	1
Receiving stolen property, misdemeanor	1	0	1
Robbery in the first degree	5	2	3
Robbery in the first degree, attempted	1	0	1
Robbery in the second degree	2	0	2
Theft, felony	2	0	2
Theft, misdemeanor	2	1	1
Unauthorized use of a motor vehicle	1	1	0
Violation of probation	11	7	4
Total	41	15	26

Crime Category at Admission, Second Quarter 2007.

Category	Number	Percent
Violent felony	17	41
Violent misdemeanor	2	5
Non-violent felony	5	12
Non-violent misdemeanor	6	15
Probation violation	11	27
Total	41	100

Length of Stay on June 30, 2007.

LOS in intervals	Youth	Length of Stay		
	Number	Mean	Median	Maximum
1 to 3 days	1	3	3	3
4 to 14 days	2	11	11	11
15 to 29 days	5	22	24	24
30 to 59 days	17	47	47	58
60 to 119 days	26	87	83	117
120 to 179 days	14	142	131	178
180 plus days	15	274	227	562
Summary	80	116	89	562

Legal Status by Average LOS at Snapshot on June 30, 2007.

	Aftercare Revocation		Sentenced		Total	
	No.	LOS	No.	LOS	No.	LOS
Family Court	0	.	80	116	80	116
30 days or less	0	.	8	17	8	17
31 days or more	0	.	72	127	72	127
Superior Court	0	.	0	.	0	.
120 days or less	0	.	0	.	0	.
121 days or more	0	.	0	.	0	.
Total	0	.	80	116	80	116

### Population Demographics on June 30, 2007.

Race/ethnicity and age	Total	
	Number	Percent
African American		
13	1	1
14	5	6
15	9	11
16	21	26
17	15	19
18	1	1
Subtotal	52	65
Hispanic		
17	1	1
Subtotal	1	1
White		
15	4	5
16	8	10
17	15	19
Subtotal	27	34
Total	80	100

### Youth's Involvement on June 30, 2007.

Sentenced	No.	LOS
Aftercare	7	107
Child Mental Health	2	32
Division of Family Services	2	110
Serious Juvenile Offender and Comprehensive Aftercare Program	13	95
Indefinite sentence	47	85
Mandatory sentence	33	160
Family Court	80	116
Superior Court	0	.

## Releases, Second Quarter 2007.

To whom released/program	Number	Percent	LOS in days	
			Mean	Maximum
Mowlds Cottage	26	93	208	372
Parent	2	7	182	207
Total	28	100	206	372

## Legal Status by Average LOS at Release, Second Quarter 2007.

	Aftercare Revocation		Sentenced		Total	
	No.	LOS	No.	LOS	No.	LOS
Family Court	0	.	28	206	28	206
30 days or less	0	.	0	.	0	.
31 days or more	0	.	28	206	28	206
Superior Court	0	.	0	.	0	.
120 days or less	0	.	0	.	0	.
121 days or more	0	.	0	.	0	.
Total	0	.	28	206	28	206

## Crime Category at Release, Second Quarter 2007.

Category	Number	Percent	LOS in days		
			Minimum	Mean	Maximum
Violent felony	16	57	150	209	372
Violent misdemeanor	1	4	170	170	170
Non-violent felony	4	14	176	213	246
Non-violent misdemeanor	4	14	179	186	190
Probation violation	3	11	149	221	330
Total	28	100	149	206	372

Distribution of Ferris School Releases by LOS, Second Quarter 2007.