



STATE OF DELAWARE  
EXECUTIVE DEPARTMENT  
OFFICE OF MANAGEMENT AND BUDGET

To: John Frazer  
From: Jorge Rodríguez-Labarca  
Date: September 26, 2007  
Subject: First Quarter 2007 Ferris School Status Report

---

*Admissions:* There were 27 admissions during the first quarter of 2007.

Admission demographics: Of the 27 admissions during the first quarter of 2007, 18 were African American, nine white and one Hispanic.

*Leading charges at admission:* The most frequent leading charges at admission for the first quarter were: possession with intent to deliver narcotics, 6; violation of probation, 5; and felony receiving stolen property, 3. Forty-eight percent, or 13 youth, were admitted for violent felonies.

*Length of stay:* On March 31, there were 67 youth at the Ferris School for Boys with an average length of stay (LOS) of 124 days, a median LOS of 117 days, and a maximum LOS of 471 days.

On March 31, there were 67 Family Court youth with an average LOS of 124 days.

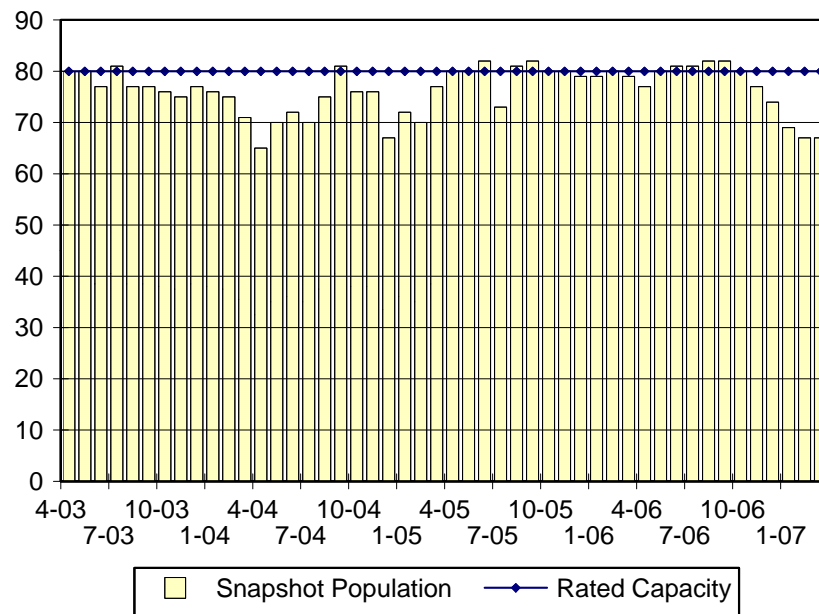
*Snapshot demographics:* Of the 67 youth at the Ferris School for Boys, there were 49 African American, 17 white and one Hispanic.

*Youth's status:* On March 31, there were 35 youth serving indefinite sentences and 32 serving mandatory sentences.

*Releases:* 34 youth were released during the first quarter of 2007 with an average LOS of 201 days and a maximum LOS at release of 392 days.

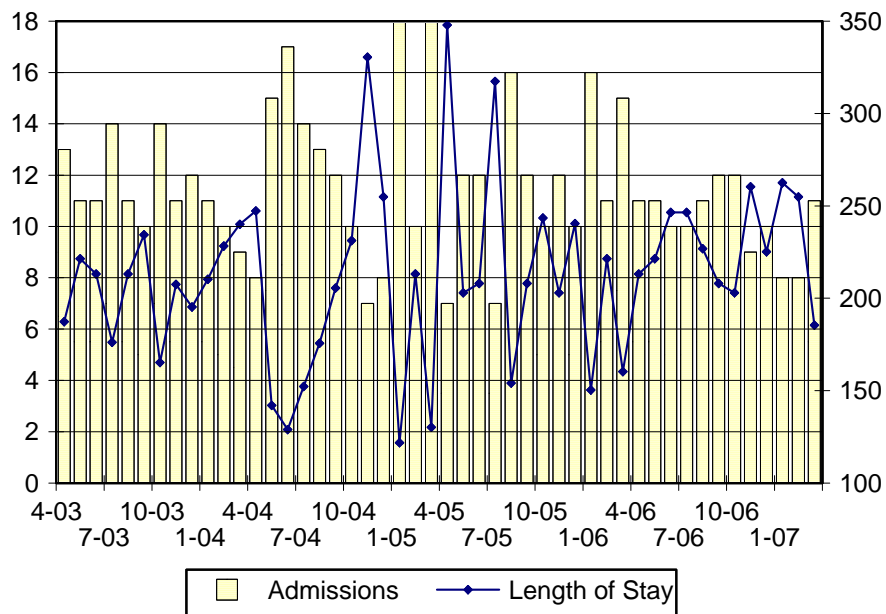


### Ferris School Snapshot Population and Rated Capacity



Snapshot populations are taken at the end of any given month.

### Ferris School Admissions and Time at Ferris School



Length of Stay: Average length of stay in days at the Ferris School given monthly admissions and populations.

## Admissions, First Quarter 2007.

Month	Number	Percent
January	8	30
February	8	30
March	11	41
Total	27	100

## Admission Demographics, First Quarter 2007.

Race/ethnicity and age	Total	
	Number	Percent
African American		
14	1	4
15	1	4
16	7	26
17	8	30
18	1	4
Subtotal	18	67
Hispanic		
17	1	4
Subtotal	1	4
White		
15	2	7
16	1	4
17	5	19
Subtotal	8	30
Total	27	100

### Admissions Profile for First Quarter 2007 Ferris School Admittees.

Admissions	<u>Youth</u>			<u>Admissions</u>		
	Number	Percent	Cum. %	Number	Percent	Cum. %
Total	27	100%	100%	206	100%	100%
Third admission	0	.	.	0	.	.
Multiple admissions	27	100%	100%	206	100%	100%
2 <sup>nd</sup>	4	15%	15%	8	4%	4%
3 <sup>rd</sup>	3	11%	26%	9	4%	8%
4 <sup>th</sup>	1	4%	30%	4	2%	10%
5 <sup>th</sup>	1	4%	33%	5	2%	13%
6 <sup>th</sup>	4	15%	48%	24	12%	24%
7 <sup>th</sup>	3	11%	59%	21	10%	34%
8 <sup>th</sup>	1	4%	63%	8	4%	38%
9 <sup>th</sup>	1	4%	67%	9	4%	43%
10 <sup>th</sup>	2	7%	74%	20	10%	52%
11 <sup>th</sup>	1	4%	78%	11	5%	58%
12 <sup>th</sup>	1	4%	81%	12	6%	64%
13 <sup>th</sup>	2	7%	89%	26	13%	76%
14 <sup>th</sup>	1	4%	93%	14	7%	83%
15 <sup>th</sup>	0	.	93%	0	.	83%
16 <sup>th</sup>	1	4%	96%	16	8%	91%
17 <sup>th</sup>	0	.	96%	0	.	91%
18 <sup>th</sup>	0	.	96%	0	.	91%
19 <sup>th</sup>	1	4%	100%	19	9%	100%

Note: First admission means that, heretofore, a juvenile had never been admitted to Secure Detention, Level III Residential, Level IV, Level V, or Division of Family Services (DFS) and Child Mental Health (CMH) programs that provide residential services. Included in the count of multiple admissions are those admitted to Secure Detention, Level III Residential, Level IV, Level V, and DFS and CMH programs that provide residential services which are classified by DSCYF as crisis bed; mental health; residential group care; treatment center; residential Interagency Collaborative Team; residential treatment, mental health; and residential treatment, substance abuse.

**Admission Profile by Dispositional  
Level for First Quarter 2007 Ferris School Admittees.**

Admissions	Number and percent of youth							
	<u>Sec. Det.</u>		<u>L. V</u>		<u>L. IV</u>		<u>L. IIIR</u>	
	N.	%	N.	%	N.	%	N.	%
Total	27	100%	27	100%	27	93%	27	100%
No prior admissions	2	7%	9	33%	8	30%	7	26%
Multiple admissions	25	93%	18	67%	19	63%	20	74%
2 <sup>nd</sup>	5	19%	9	33%	6	22%	8	30%
3 <sup>rd</sup>	6	22%	6	22%	1	4%	4	15%
4 <sup>th</sup>	6	22%	2	7%	4	15%	3	11%
5 <sup>th</sup>	2	7%	0	.	5	19%	3	11%
6 <sup>th</sup>	3	11%	1	4%	1	4%	1	4%
7 <sup>th</sup>	1	4%	0	.	2	0%	0	.
8 <sup>th</sup>	1	4%	0	.	0	.	1	4%
9 <sup>th</sup>	1	4%	0	.	0	.	0	.

Note: Included in the count of multiple admissions are those admitted to Secure Detention (Sec. Det.), Level III Residential (L. IIIR), Level IV, Level V, and Division of Family Services and Child Mental Health programs that provide residential services which are classified by DSCYF as crisis bed; mental health; residential group care; treatment center; residential Interagency Collaborative Team; residential treatment, mental health; and residential treatment, substance abuse.

Reading this table: This table shows that 93 percent of youth admitted to the Ferris School during the first quarter of 2007 had prior admissions to secure detention, 67 percent to Level V, 63 percent to Level IV, and 74 percent to Level IIIR. All youth without prior Level V admissions had prior admissions to secure detention.

## Leading Charge at Admission, First Quarter 2007.

Sentenced admissions	Total	<u>Race</u>	
		White	Minority
Bombs, incendiary devices, Molotov cocktails	1	1	0
Burglary in the first degree	1	1	0
Burglary in the second degree	1	0	1
Burglary in the third degree	1	1	0
Conspiracy, second degree	2	1	1
Possession of a deadly weapon by person prohibited, firearm	1	0	1
Possession of a firearm during the commission of a felony	1	1	0
Possession with intent to deliver narcotics	6	0	6
Receiving stolen property, felony	3	1	2
Riot	1	1	0
Robbery in the first degree	1	0	1
Theft, felony	1	0	1
Theft, misdemeanor	1	1	0
Unlawful sexual contact in the second degree	1	0	1
Violation of probation	5	0	5
Total	27	8	19

### Crime Category at Admission, First Quarter 2007.

Category	Number	Percent
Violent felony	13	48
Non-violent felony	8	30
Non-violent misdemeanor	1	4
Probation violation	5	19
Total	27	100

### Length of Stay on March 31, 2007.

LOS in intervals	Youth	Length of Stay		
	Number	Mean	Median	Maximum
1 to 3 days	0	.	.	.
4 to 14 days	5	6	5	13
15 to 29 days	5	23	24	26
30 to 59 days	9	37	39	47
60 to 119 days	16	95	98	117
120 to 179 days	17	156	157	178
180 plus days	15	242	234	471
Summary	67	124	117	471

### Legal Status by Average LOS at Snapshot on March 31, 2007.

	Aftercare Revocation		Sentenced		Total	
	No.	LOS	No.	LOS	No.	LOS
Family Court	0	.	67	124	67	124
30 days or less	0	.	10	15	10	15
31 days or more	0	.	57	143	57	143
Superior Court	0	.	0	.	0	.
120 days or less	0	.	0	.	0	.
121 days or more	0	.	0	.	0	.
Total	0	.	0	.	67	124

### Population Demographics on March 31, 2007.

Race/ethnicity and age	Total	
	Number	Percent
African American		
14	3	4
15	8	12
16	16	24
17	21	31
18	1	1
Subtotal	49	73
Hispanic		
17	1	1
Subtotal	1	1
White		
15	3	4
16	4	6
17	9	13
18	1	1
Subtotal	17	25
Total	67	100

### Youth's Involvement on March 31, 2007.

Sentenced	No.	LOS
Aftercare	11	154
Child Mental Health	4	210
Division of Family Services	3	159
Serious Juvenile Offender and Comprehensive Aftercare Program	20	141
Indefinite sentence	35	108
Mandatory sentence	32	140
Family Court	67	124
Superior Court	0	.



## Releases, First Quarter 2007.

To whom released/program	Number	Percent	LOS in days	
			Mean	Maximum
Child Mental Health, Rockford Center	1	3	154	154
Department of Correction	1	3	45	45
Glen Mills Schools	1	3	71	71
Mowlds Cottage	30	88	219	392
Parent	1	3	4	4
Total	34	100	201	392

## Legal Status by Average LOS at Release, First Quarter 2007.

	Aftercare Revocation		Sentenced		Total	
	No.	LOS	No.	LOS	No.	LOS
Family Court	0	.	34	201	34	201
30 days or less	0	.	1	4	1	4
31 days or more	0	.	33	207	33	207
Superior Court	0	.	0	.	0	.
120 days or less	0	.	0	.	0	.
121 days or more	0	.	0	.	0	.
Total	0	.	34	201	34	201

## Crime Category at Release, First Quarter 2007.

Category	Number	Percent	LOS in days		
			Minimum	Mean	Maximum
Violent felony	16	47	4	245	392
Violent misdemeanor	1	3	204	204	204
Non-violent felony	4	12	45	156	204
Non-violent misdemeanor	5	15	71	159	197
Probation violation	8	24	126	164	204
Total	34	100	4	201	392

Distribution of Ferris School Releases by LOS, First Quarter 2007.