



STATE OF DELAWARE  
EXECUTIVE DEPARTMENT  
OFFICE OF MANAGEMENT AND BUDGET

To: John Frazer  
From: Jorge Rodríguez-Labarca  
Date: November 30, 2006  
Subject: Third Quarter 2006 Ferris School Status Report

---

*Admissions:* There were 33 admissions during the third quarter of 2006.

Admission demographics: Of the 33 admissions during the third quarter of 2006, 24 were African American and nine were white.

*Leading charges at admission:* The most frequent leading charges at admission for the third quarter were: violation of probation, 7; and, possession with intent to deliver narcotics, 5. Forty-eight percent, or 16 youth, were admitted for violent felonies.

*Length of stay:* On September 30, there were 82 youth at the Ferris School for Boys with an average length of stay (LOS) of 135 days, a median LOS of 119 days, and a maximum LOS of 671 days.

On September 30, there were 82 Family Court youth with an average LOS of 135 days.

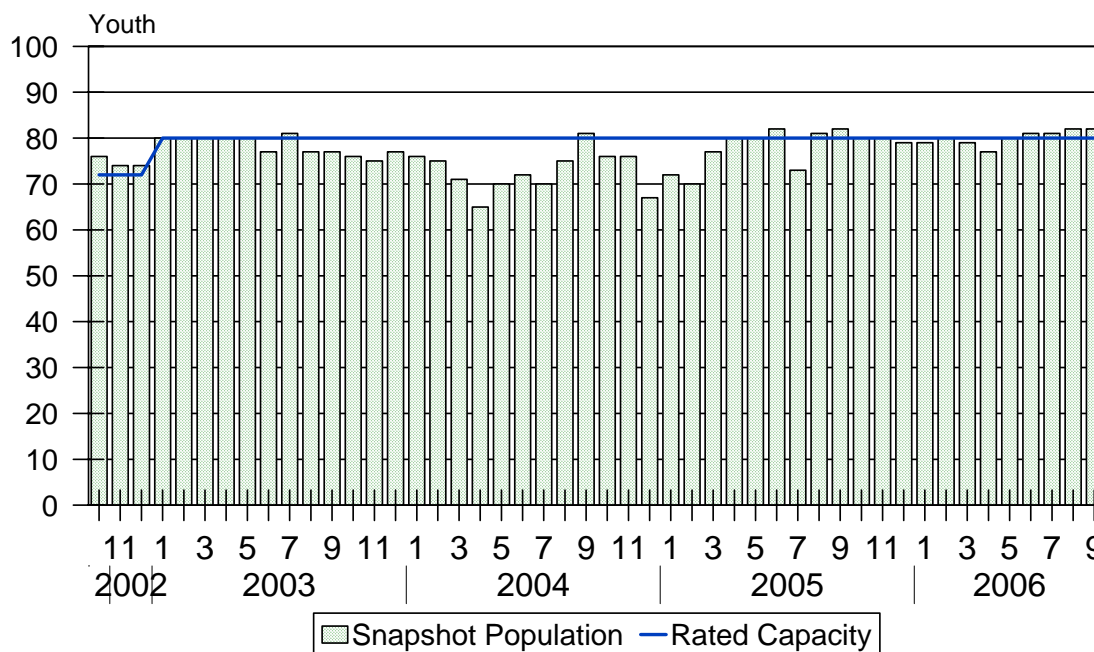
*Snapshot demographics:* Of the 82 youth at the Ferris School for Boys, there were 60 African American, 21 white and one Hispanic.

*Youth's status:* On September 30, there were 47 youth serving indefinite sentences and 35 serving mandatory sentences.

*Releases:* 32 youth were released during the third quarter of 2006 with an average LOS of 181 days and a maximum LOS at release of 232 days.

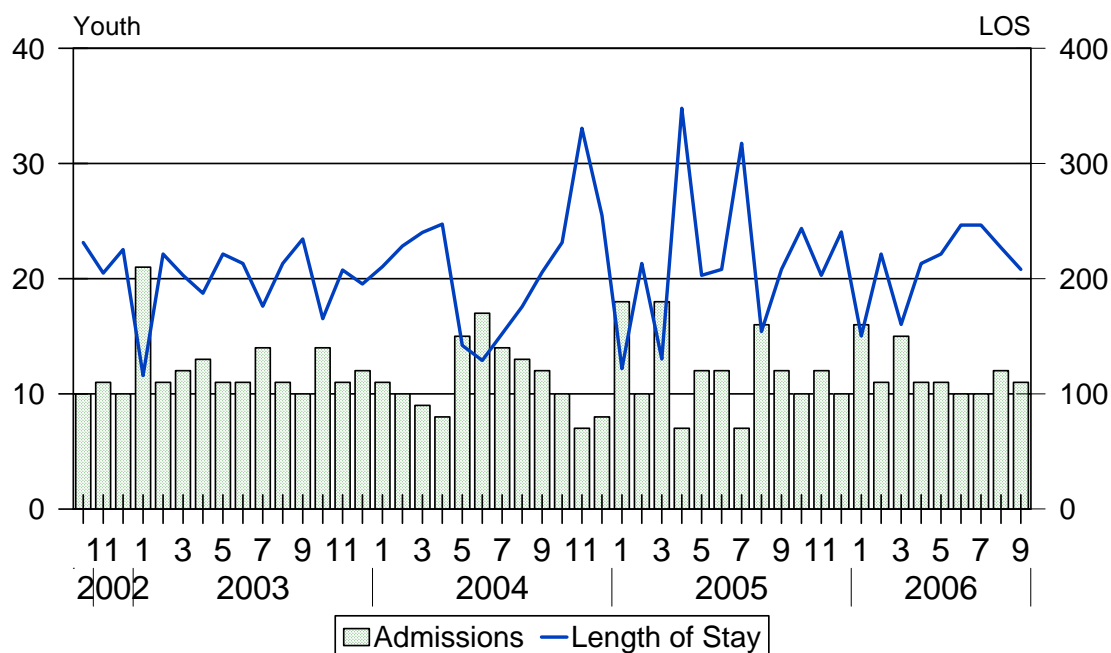


### Ferris School Snapshot Population and Rated Capacity



Snapshot populations are taken at the end of any given month. The Ferris School capacity increased from 72 beds to 80 beds during January 2003.

### Ferris School Admissions and Time at Ferris School



Length of Stay: Average length of stay in days at the Ferris School given monthly admissions and populations.

## Admissions, Third Quarter 2006.

Month	Number	Percent
July	10	30
August	12	36
September	11	33
Total	33	100

## Admission Demographics, Third Quarter 2006.

Race/ethnicity and age	<u>Total</u>	
	Number	Percent
African American		
14	1	3
15	9	27
16	5	15
17	9	27
Subtotal	24	73
White		
15	1	3
16	4	12
17	4	12
Subtotal	9	27
Total	33	100

Admissions Profile for  
Third Quarter 2006 Ferris School Admittees.

Admissions	<u>Youth</u>			<u>Admissions</u>		
	Number	Percent	Cum. %	Number	Percent	Cum. %
Total	33	100%	100%	291	100%	100%
Third admission	0	.	.	0	.	.
Multiple admissions	33	100%	100%	291	100%	100%
2 <sup>nd</sup>	5	15%	15%	10	3%	3%
3 <sup>rd</sup>	2	6%	21%	6	2%	5%
4 <sup>th</sup>	3	9%	30%	12	4%	10%
5 <sup>th</sup>	2	6%	36%	10	3%	13%
6 <sup>th</sup>	1	3%	39%	6	2%	15%
7 <sup>th</sup>	4	12%	52%	28	10%	25%
8 <sup>th</sup>	1	3%	55%	8	3%	27%
9 <sup>th</sup>	2	6%	61%	18	6%	34%
10 <sup>th</sup>	0	.	61%	0	.	34%
11 <sup>th</sup>	1	3%	64%	11	4%	37%
12 <sup>th</sup>	0	.	64%	0	.	37%
13 <sup>th</sup>	2	6%	70%	26	9%	46%
14 <sup>th</sup>	3	9%	79%	42	14%	61%
15 <sup>th</sup>	2	6%	85%	30	10%	71%
16 <sup>th</sup>	2	6%	91%	32	11%	82%
17 <sup>th</sup>	2	6%	97%	34	12%	94%
18 <sup>th</sup>	1	3%	100%	18	6%	100%

Note: Third admission means that, heretofore, a juvenile had never been admitted to Secure Detention, Level III Residential, Level IV, Level V, or Division of Family Services (DFS) and Child Mental Health (CMH) programs that provide residential services. Included in the count of multiple admissions are those admitted to Secure Detention, Level III Residential, Level IV, Level V, and DFS and CMH programs that provide residential services which are classified by DSCYF as crisis bed; mental health; residential group care; treatment center; residential Interagency Collaborative Team; residential treatment, mental health; and residential treatment, substance abuse.

**Admission Profile by Dispositional  
Level for Third Quarter 2006 Ferris School Admittees.**

Admissions	Number and percent of youth							
	<u>Sec. Det.</u>		<u>L. V</u>		<u>L. IV</u>		<u>L. IIIR</u>	
	N.	%	N.	%	N.	%	N.	%
Total	33	88%	33	100%	33	100%	33	100%
No prior admissions	5	15%	4	12%	8	24%	8	24%
Multiple admissions	28	85%	29	88%	25	76%	25	76%
2 <sup>nd</sup>	4	12%	12	36%	10	30%	8	24%
3 <sup>rd</sup>	4	12%	7	21%	1	3%	3	9%
4 <sup>th</sup>	3	9%	6	18%	9	27%	4	12%
5 <sup>th</sup>	5	15%	3	9%	1	3%	4	12%
6 <sup>th</sup>	2	6%	1	3%	3	9%	1	3%
7 <sup>th</sup>	5	15%	0	.	1	3%	1	3%
8 <sup>th</sup>	1	3%	0	.	0	.	3	9%
9 <sup>th</sup>	3	9%	0	.	0	.	0	.
10 <sup>th</sup>	1	3%	0	.	0	.	0	.
11 <sup>th</sup>	0	.	0	.	0	.	1	3%

Note: Included in the count of multiple admissions are those admitted to Secure Detention (Sec. Det.), Level III Residential (L. IIIR), Level IV, Level V, and Division of Family Services and Child Mental Health programs that provide residential services which are classified by DSCYF as crisis bed; mental health; residential group care; treatment center; residential Interagency Collaborative Team; residential treatment, mental health; and residential treatment, substance abuse.

Reading this table: This table shows that 85 percent of youth admitted to the Ferris School during the third quarter of 2006 had prior admissions to secure detention, 88 percent to Level V, 76 percent to Level IV, and 76 percent to Level IIIR. All youth without prior Level V admissions had prior admissions to secure detention.

### Leading Charge at Admission, Third Quarter 2006.

---

Leading charge	
Assault in the second degree	1
Burglary in the second degree	3
Escape in the third degree	1
Forgery in the second degree	1
Menacing, aggravated	1
Possession of a deadly weapon by a person prohibited, firearm	1
Possession of a firearm during the commission of a felony	1
Possession of burglary tools	2
Possession of drug paraphernalia	1
Possession or use of a non-narcotic	1
Possession with intent to deliver narcotics	5
Possession with intent to deliver non-narcotics	1
Robbery in the first degree	3
Robbery in the first degree, attempted	1
Theft, felony	2
Unlawful use of a credit card, misdemeanor	1
Violation of probation	7
<hr/>	
Total	33

### Crime Category at Admission, Third Quarter 2006.

Category	Number	Percent
Violent felony	16	48
Violent misdemeanor	6	18
Non-violent felony	4	12
Probation violation	7	21
Total	33	100

### Length of Stay on September 30, 2006.

LOS in intervals	Youth	Length of Stay		
	Number	Mean	Median	Maximum
1 to 3 days	3	3	3	3
4 to 14 days	2	10	10	10
15 to 29 days	6	22	24	26
30 to 59 days	12	44	45	59
60 to 119 days	18	89	87	116
120 to 179 days	21	150	150	178
180 plus days	20	281	252	671
Summary	82	135	119	671

### Legal Status by Average LOS at Snapshot on September 30, 2006.

	Aftercare Revocation		Sentenced		Total	
	No.	LOS	No.	LOS	No.	LOS
Family Court	0	.	82	135	82	135
30 days or less	0	.	11	12	11	12
31 days or more	0	.	71	154	71	154
Superior Court	0	.	0	.	0	.
120 days or less	0	.	0	.	0	.
121 days or more	0	.	0	.	0	.
Total	0	.	82	135	82	135

### Population Demographics on September 30, 2006.

Race/ethnicity and age	Total	
	Number	Percent
African American		
14	4	5
15	16	20
16	20	24
17	19	23
18	1	1
Subtotal	60	73
Hispanic		
17	1	1
Subtotal	1	1
White		
15	2	2
16	9	11
17	10	12
Subtotal	21	26
Total	82	100

### Youth's Involvement on September 30, 2006.

Sentenced	No.	LOS
Aftercare	10	198
Child Mental Health	13	124
Division of Family Services	6	154
Serious Juvenile Offender and Comprehensive Aftercare Program	39	149
Indefinite sentence	47	127
Mandatory sentence	35	146
Family Court	82	135
Superior Court	0	.

## Releases, Third Quarter 2006.

To whom released/program	Number	Percent	LOS in days	
			Mean	Maximum
Mowlds Cottage	32	100	181	232
Total	32	100	181	232

## Legal Status by Average LOS at Release, Third Quarter 2006.

	Aftercare Revocation		Sentenced		Total	
	No.	LOS	No.	LOS	No.	LOS
Family Court	0	.	32	181	32	181
30 days or less	0	.	0	.	0	.
31 days or more	0	.	32	181	32	181
Superior Court	0	.	0	.	0	.
120 days or less	0	.	0	.	0	.
121 days or more	0	.	0	.	0	.
Total	0	.	32	181	32	181

## Crime Category at Release, Third Quarter 2006.

Category	Number	Percent	LOS in days		
			Minimum	Mean	Maximum
Violent felony	17	53	49	180	227
Violent misdemeanor	2	6	128	152	176
Non-violent felony	5	16	162	199	232
Non-violent misdemeanor	4	13	169	183	204
Probation violation	4	13	155	174	211
Total	32	100	49	181	232

Distribution of Ferris School Releases by LOS, Third Quarter 2006.