



STATE OF DELAWARE  
EXECUTIVE DEPARTMENT  
OFFICE OF MANAGEMENT AND BUDGET

To: John Frazer  
From: Jorge Rodríguez-Labarca  
Date: October 6, 2006  
Subject: Second Quarter 2006 Ferris School Status Report

---

*Admissions:* There were 32 admissions during the second quarter of 2006.

Admission demographics: Of the 32 admissions during the second quarter of 2006, 23 were African American, eight were white and one was Hispanic.

*Leading charges at admission:* The most frequent leading charges at admission for the second quarter were: violation of probation, 7; and, possession with intent to deliver narcotics, 5. Fifty-three percent, or 17 youth, were admitted for violent felonies.

*Length of stay:* On June 30, there were 81 youth at the Ferris School for Boys with an average length of stay (LOS) of 116 days, a median LOS of 107 days, and a maximum LOS of 579 days.

On June 30, there were 81 Family Court youth with an average LOS of 116 days.

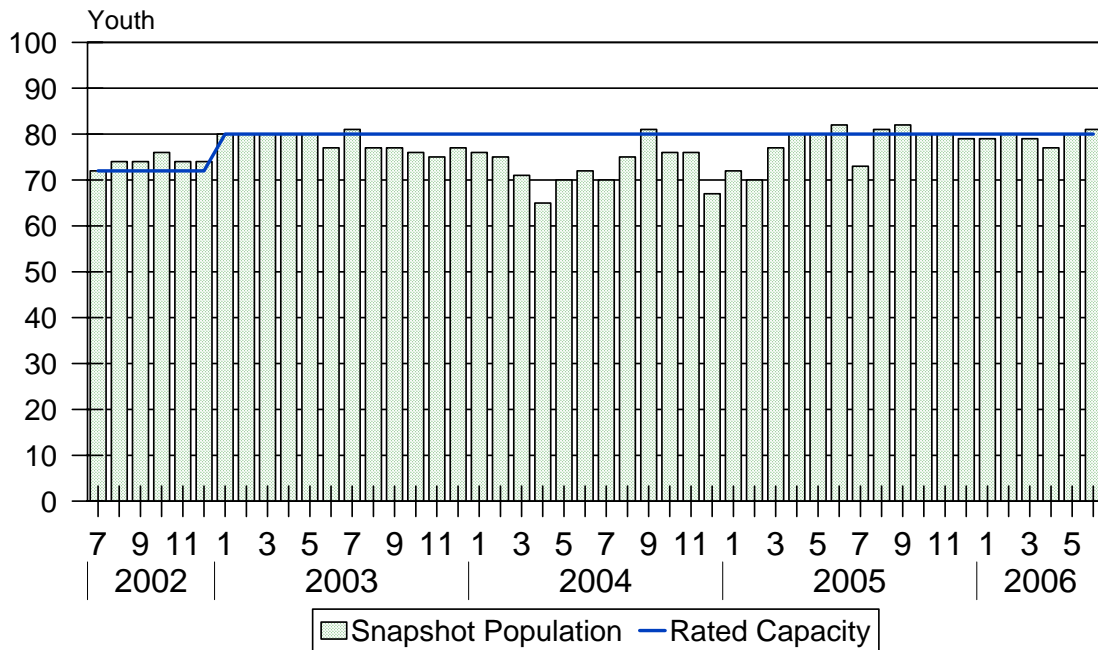
*Snapshot demographics:* Of the 81 youth at the Ferris School for Boys, there were 59 African American, 20 white and two Hispanics.

*Youth's status:* On June 30, there were 50 youth serving indefinite sentences and 31 serving mandatory sentences.

*Releases:* 32 youth were released during the second quarter of 2006 with an average LOS of 192 days and a maximum LOS at release of 372 days.

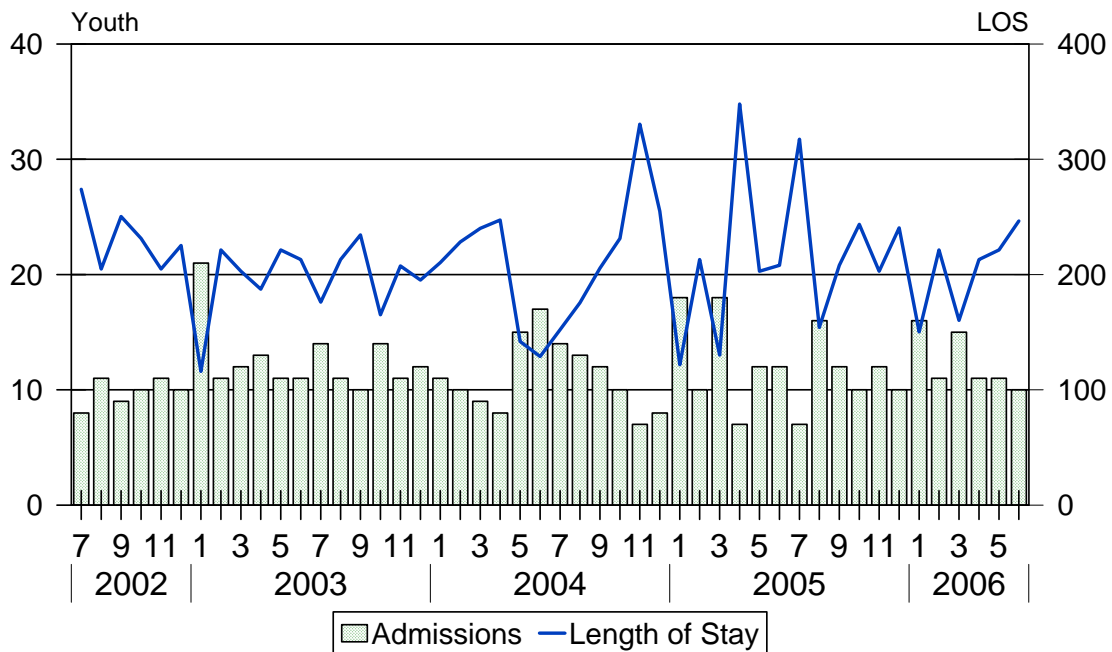


### Ferris School Snapshot Population and Rated Capacity



Snapshot populations are taken at the end of any given month. The Ferris School capacity increased from 72 beds to 80 beds during January 2003.

### Ferris School Admissions and Time at Ferris School



Length of Stay: Average length of stay in days at the Ferris School given monthly admissions and populations.

## Admissions, Second Quarter 2006.

Month	Number	Percent
April	11	34
May	11	34
June	10	31
Total	32	100

## Admission Demographics, Second Quarter 2006.

Race/ethnicity and age	Total	
	Number	Percent
African American		
14	1	3
15	4	13
16	9	28
17	7	22
18	2	6
Subtotal	23	72
Hispanic		
17	1	3
Subtotal	1	3
White		
16	4	13
17	4	13
Subtotal	8	25
Total	32	100

### Admissions Profile for Second Quarter 2006 Ferris School Admittees.

Admissions	<u>Youth</u>			<u>Admissions</u>		
	Number	Percent	Cum. %	Number	Percent	Cum. %
Total	32	100%	100%	295	100%	100%
Second admission	0	.	.	0	.	.
Multiple admissions	32	100%	100%	295	100%	100%
2 <sup>nd</sup>	3	9%	9%	6	2%	2%
3 <sup>rd</sup>	2	6%	16%	6	2%	4%
4 <sup>th</sup>	3	9%	25%	12	4%	8%
5 <sup>th</sup>	1	3%	28%	5	2%	10%
6 <sup>th</sup>	2	6%	34%	12	4%	14%
7 <sup>th</sup>	1	3%	38%	7	2%	16%
8 <sup>th</sup>	4	13%	50%	32	11%	27%
9 <sup>th</sup>	3	9%	59%	27	9%	36%
10 <sup>th</sup>	3	9%	69%	30	10%	46%
11 <sup>th</sup>	1	3%	72%	11	4%	50%
12 <sup>th</sup>	2	6%	78%	24	8%	58%
13 <sup>th</sup>	1	3%	81%	13	4%	63%
14 <sup>th</sup>	2	6%	88%	28	9%	72%
15 <sup>th</sup>	0	.	88%	0	.	72%
16 <sup>th</sup>	0	.	88%	0	.	72%
17 <sup>th</sup>	2	6%	94%	34	12%	84%
18 <sup>th</sup>	0	.	94%	0	.	84%
19 <sup>th</sup>	0	.	94%	0	.	84%
20 <sup>th</sup>	0	.	94%	0	.	84%
21 <sup>st</sup>	1	0%	94%	21	7%	91%
22 <sup>nd</sup>	0	.	94%	0	.	91%
23 <sup>rd</sup>	0	.	94%	0	.	91%
24 <sup>th</sup>	0	.	94%	0	.	91%
25 <sup>th</sup>	0	.	94%	0	.	91%
26 <sup>th</sup>	0	.	94%	0	.	91%
27 <sup>th</sup>	1	0%	94%	27	9%	100%

Note: Second admission means that, heretofore, a juvenile had never been admitted to Secure Detention, Level III Residential, Level IV, Level V, or Division of Family Services (DFS) and Child Mental Health (CMH) programs that provide residential services. Included in the count of multiple admissions are those admitted to Secure Detention, Level III Residential, Level IV, Level V, and DFS and CMH programs that provide residential services which are classified by DSCYF as crisis bed; mental health; residential group care; treatment center; residential Interagency Collaborative Team; residential treatment, mental health; and residential treatment, substance abuse.

**Admission Profile by Dispositional  
Level for Second Quarter 2006 Ferris School Admittees.**

Admissions	Number and percent of youth							
	<u>Sec. Det.</u>		<u>L. V</u>		<u>L. IV</u>		<u>L. IIIR</u>	
	N.	%	N.	%	N.	%	N.	%
Total	32	91%	32	100%	32	100%	32	100%
No prior admissions	2	6%	3	9%	7	22%	9	28%
Multiple admissions	30	84%	29	91%	25	78%	23	72%
2 <sup>nd</sup>	6	19%	18	56%	6	19%	7	22%
3 <sup>rd</sup>	3	9%	6	19%	7	22%	4	13%
4 <sup>th</sup>	4	13%	2	6%	8	25%	5	16%
5 <sup>th</sup>	7	22%	2	6%	3	9%	2	6%
6 <sup>th</sup>	0	.	1	3%	1	3%	2	6%
7 <sup>th</sup>	4	13%	0	.	0	.	1	3%
8 <sup>th</sup>	3	9%	0	.	0	.	2	6%
9 <sup>th</sup>	2	6%	0	.	0	.	0	.
10 <sup>th</sup>	0	.	0	.	0	.	0	.
11 <sup>th</sup>	1	3%	0	.	0	.	0	.

Note: Included in the count of multiple admissions are those admitted to Secure Detention (Sec. Det.), Level III Residential (L. IIIR), Level IV, Level V, and Division of Family Services and Child Mental Health programs that provide residential services which are classified by DSCYF as crisis bed; mental health; residential group care; treatment center; residential Interagency Collaborative Team; residential treatment, mental health; and residential treatment, substance abuse.

Reading this table: This table shows that 84 percent of youth admitted to the Ferris School during the second quarter of 2006 had prior admissions to secure detention, 91 percent to Level V, 78 percent to Level IV, and 72 percent to Level IIIR. All youth without prior Level V admissions had prior admissions to Secure Detention.

### Leading Charge at Admission, Second Quarter 2006.

Leading charge	
Assault in the second degree	3
Assault in the third degree	2
Burglary in the second degree	3
Criminal impersonation	1
Leaving the scene of an accident	1
Possession of a deadly weapon by person prohibited	1
Possession of a deadly weapon by person prohibited, firearm	1
Possession of a firearm during the commission of a felony	1
Possession with intent to deliver narcotics	5
Possession with intent to deliver non-narcotics	1
Robbery in the first degree	1
Robbery in the second degree	3
Shoplifting, misdemeanor	1
Theft, misdemeanor	1
Violation of probation	7
Total	42

Crime Category at Admission, Second Quarter 2006.

Category	Number	Percent
Violent felony	17	53
Violent misdemeanor	2	6
Non-violent felony	2	6
Non-violent misdemeanor	3	9
Traffic misdemeanor	1	3
Probation violation	7	22
Total	32	100

Length of Stay on June 30, 2006.

LOS in intervals	Youth	Length of Stay		
	Number	Mean	Median	Maximum
1 to 3 days	4	2	2	3
4 to 14 days	1	9	9	9
15 to 29 days	5	21	23	29
30 to 59 days	11	45	44	58
60 to 119 days	24	93	93	114
120 to 179 days	25	150	149	177
180 plus days	11	252	213	579
Summary	81	116	107	579

Legal Status by Average LOS at Snapshot on June 30, 2006.

	Aftercare Revocation		Sentenced		Total	
	No.	LOS	No.	LOS	No.	LOS
Family Court	0	.	81	116	81	116
30 days or less	0	.	10	13	10	13
31 days or more	0	.	71	130	71	130
Superior Court	0	.	0	.	0	.
120 days or less	0	.	0	.	0	.
121 days or more	0	.	0	.	0	.
Total	0	.	81	116	81	116

### Population Demographics on June 30, 2006.

Race/ethnicity and age	Total	
	Number	Percent
African American		
13	1	1
14	4	5
15	13	16
16	21	26
17	18	22
18	2	2
Subtotal	59	73
Hispanic		
14	1	1
17	1	1
Subtotal	2	2
White		
15	2	2
16	6	7
17	12	15
Subtotal	20	25
Total	81	100

### Youth's Involvement on June 30, 2006.

Sentenced	No.	LOS
Aftercare	14	138
Child Mental Health	10	83
Division of Family Services	7	97
Serious Juvenile Offender and Comprehensive Aftercare Program	39	120
Indefinite sentence	50	108
Mandatory sentence	31	129
Family Court	81	116
Superior Court	0	.



## Releases, Second Quarter 2006.

To whom released/program	Number	Percent	<u>LOS in days</u>	
			Mean	Maximum
Mowlds Cottage	32	100	192	372
Total	32	100	192	372

## Legal Status by Average LOS at Release, Second Quarter 2006.

	<u>Aftercare Revocation</u>		<u>Sentenced</u>		<u>Total</u>	
	No.	LOS	No.	LOS	No.	LOS
Family Court	0	.	32	192	32	192
30 days or less	0	.	0	.	0	.
31 days or more	0	.	32	192	32	192
Superior Court	0	.	0	.	0	.
120 days or less	0	.	0	.	0	.
121 days or more	0	.	0	.	0	.
Total	0	.	32	192	32	192

## Crime Category at Release, Second Quarter 2006.

Category	Number	Percent	<u>LOS in days</u>		
			Minimum	Mean	Maximum
Violent felony	11	34	155	197	372
Violent misdemeanor	2	6	172	188	204
Non-violent felony	5	16	155	226	322
Non-violent misdemeanor	3	9	161	176	193
Probation violation	11	34	149	175	237
Total	32	100	149	192	372

Distribution of Ferris School Releases by LOS, Second Quarter 2006.