



**STATE OF DELAWARE  
EXECUTIVE DEPARTMENT  
OFFICE OF MANAGEMENT AND BUDGET**

**To:** John Frazer  
**From:** Jorge Rodríguez-Labarca  
**Date:** April 19, 2006  
**Subject:** First Quarter 2006 Ferris School Status Report

---

*Admissions:* There were 42 admissions during the first quarter of 2006.

*Admission demographics:* Of the 42 admissions during the first quarter of 2006, 30 were African Americans, 11 were whites and one was Hispanic.

*Leading charges at admission:* The most frequent leading charges at admission for the first quarter were: possession with intent to deliver narcotics, 8; violation of probation, 6; and, burglary in the second degree, 5. Fifty-five percent, or 23 youth, were admitted for violent felonies.

*Length of stay:* On March 31, there were 79 youth at the Ferris School for Boys with an average length of stay (LOS) of 96 days, a median LOS of 86 days, and a maximum LOS of 366 days.

On March 31, there were 79 Family Court youth with an average LOS of 96 days.

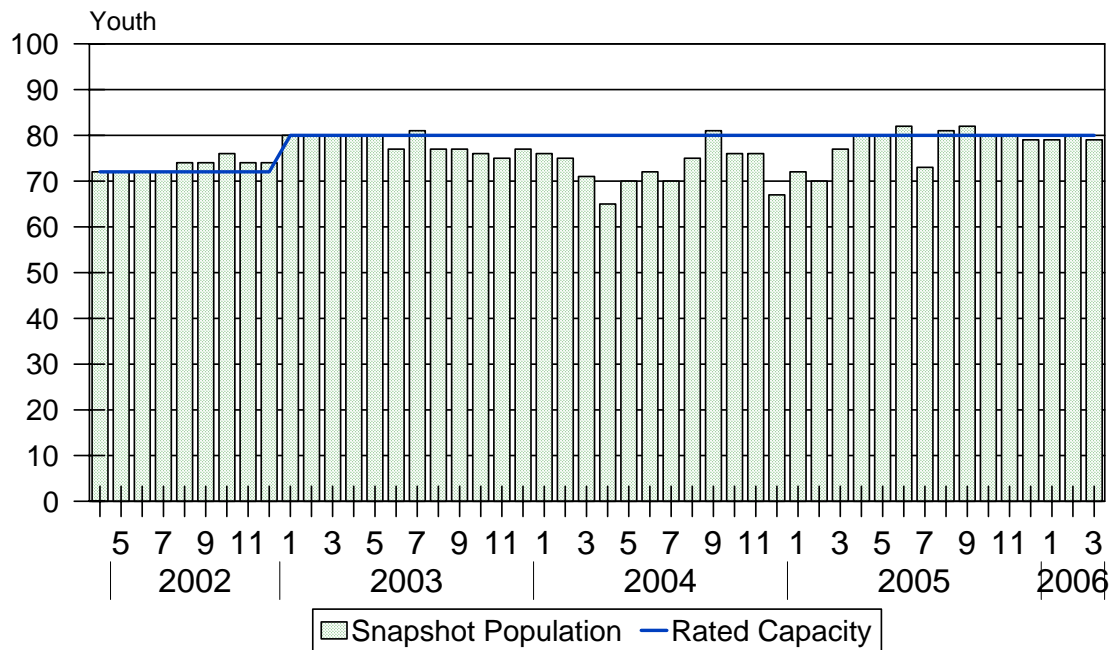
*Snapshot demographics:* Of the 79 youth at the Ferris School for Boys, there were 60 African Americans, 16 whites and three Hispanics.

*Youth's status:* On March 31, there were 46 youth serving indefinite sentences and 33 serving mandatory sentences.

*Releases:* 42 youth were released during the first quarter of 2006 with an average LOS of 204 days and a maximum LOS at release of 386 days.

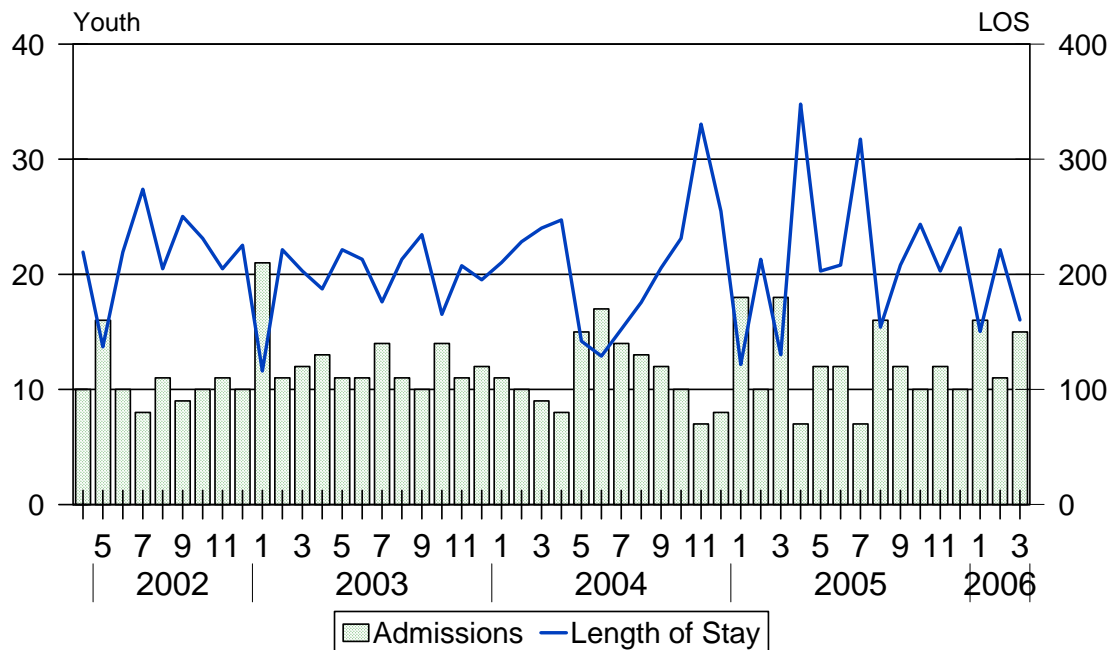


### Ferris School Snapshot Population and Rated Capacity



Snapshot populations are taken at the end of any given month. The Ferris School capacity increased from 72 beds to 80 beds during January 2003.

### Ferris School Admissions and Time at Ferris School



Length of Stay: Average length of stay in days at the Ferris School given monthly admissions and populations.

## Admissions, First Quarter 2006.

Month	Number	Percent
January	16	38
February	11	26
March	15	36
Total	42	100

## Admission Demographics, First Quarter 2006.

Race/ethnicity and age	Total	
	Number	Percent
African American		
13	1	2
14	2	5
15	9	21
16	9	21
17	9	21
Subtotal	30	71
Hispanic		
16	1	2
Subtotal	1	2
White		
15	2	5
16	2	5
17	7	17
Subtotal	11	26
Total	42	100

### Admissions Profile for First Quarter 2006 Ferris School Admittees.

Admissions	<u>Youth</u>			<u>Admissions</u>		
	Number	Percent	Cum. %	Number	Percent	Cum. %
Total	42	100	100	295	100	100
First admission	0	.	.	0	.	.
Multiple admissions	42	100	100	295	100	100
2 <sup>nd</sup>	3	7	7	6	2	2
3 <sup>rd</sup>	8	19	26	24	8	10
4 <sup>th</sup>	2	5	31	8	3	13
5 <sup>th</sup>	5	12	43	25	8	21
6 <sup>th</sup>	4	10	52	24	8	29
7 <sup>th</sup>	2	5	57	14	5	34
8 <sup>th</sup>	4	10	67	32	11	45
9 <sup>th</sup>	3	7	74	27	9	54
10 <sup>th</sup>	2	5	79	20	7	61
11 <sup>th</sup>	3	7	86	33	11	72
12 <sup>th</sup>	2	5	90	24	8	80
13 <sup>th</sup>	1	2	93	13	4	85
14 <sup>th</sup>	1	2	95	14	5	89
15 <sup>th</sup>	1	2	98	15	5	95
16 <sup>th</sup>	1	2	100	16	5	100

Note: First admission means that, heretofore, a juvenile had never been admitted to Secure Detention, Level III Residential, Level IV, Level V, or Division of Family Services (DFS) and Child Mental Health (CMH) programs that provide residential services. Included in the count of multiple admissions are those admitted to Secure Detention, Level III Residential, Level IV, Level V, and DFS and CMH programs that provide residential services which are classified by DSCYF as crisis bed; mental health; residential group care; treatment center; residential Interagency Collaborative Team; residential treatment, mental health; and residential treatment, substance abuse.

**Admission Profile by Dispositional  
Level for First Quarter 2006 Ferris School Admittees.**

Admissions	Number and percent of youth							
	<u>Sec. Det.</u>		<u>L. V</u>		<u>L. IV</u>		<u>L. IIIR</u>	
	N.	%	N.	%	N.	%	N.	%
Total	42	100	42	100	42	100	42	100
No prior admissions	5	12	11	26	17	40	13	31
Multiple admissions	37	88	31	74	25	60	29	69
2 <sup>nd</sup>	9	21	14	33	12	29	12	29
3 <sup>rd</sup>	8	19	9	21	5	12	7	17
4 <sup>th</sup>	6	14	6	14	4	10	4	10
5 <sup>th</sup>	1	2	1	2	3	7	2	5
6 <sup>th</sup>	6	14	1	2	0	.	1	2
7 <sup>th</sup>	4	10	0	.	0	.	2	5
8 <sup>th</sup>	1	2	0	.	1	2	0	.
9 <sup>th</sup>	1	2	0	.	0	.	0	.
10 <sup>th</sup>	1	2	0	.	0	.	1	2

Note: Included in the count of multiple admissions are those admitted to Secure Detention (Sec. Det.), Level III Residential (L. IIIR), Level IV, Level V, and Division of Family Services and Child Mental Health programs that provide residential services which are classified by DSCYF as crisis bed; mental health; residential group care; treatment center; residential Interagency Collaborative Team; residential treatment, mental health; and residential treatment, substance abuse.

Reading this table: This table shows that 88 percent of youth admitted to the Ferris School during the first quarter of 2006 had prior admissions to secure detention, 74 percent to Level V, 60 percent to Level IV, and 69 percent to Level IIIR. All youth without prior Level V admissions had prior admissions to Secure Detention.

### Leading Charge at Admission, First Quarter 2006.

Leading charge	
Assault in the third degree	1
Burglary in the second degree	5
Criminal mischief, unclassified misdemeanor	1
Disorderly conduct	1
Distribution of a controlled substance within 300 feet of a park	2
Escape in the third degree	1
Possession of a deadly weapon by a person prohibited	1
Possession of a deadly weapon by a person prohibited, firearm	3
Possession of a weapon in a safe school zone	1
Possession of a weapon with a removed serial number	1
Possession of drug paraphernalia	1
Possession with intent to deliver narcotics	8
Possession with intent to deliver non-narcotics	1
Receiving a stolen firearm	1
Reckless endangering in the first degree	1
Resisting arrest	2
Robbery in the first degree	3
Robbery in the second degree, attempted	1
Robbery in the second degree	1
Violation of probation	6
Total	42

### Crime Category at Admission, First Quarter 2006.

Category	Number	Percent
Violent felony	23	55
Violent misdemeanor	1	2
Non-violent felony	6	14
Non-violent misdemeanor	6	14
Probation violation	6	14
Total	42	100

### Length of Stay on March 31, 2006.

LOS in intervals	Youth	Length of Stay		
	Number	Mean	Median	Maximum
1 to 3 days	2	2	2	2
4 to 14 days	3	9	9	9
15 to 29 days	8	20	20	23
30 to 59 days	13	45	44	58
60 to 119 days	26	86	83	116
120 to 179 days	20	146	149	177
180 plus days	7	238	198	366
Summary	79	96	86	366

### Legal Status by Average LOS at Snapshot on March 31, 2006.

	Aftercare Revocation		Sentenced		Total	
	No.	LOS	No.	LOS	No.	LOS
Family Court	0	.	79	96	79	96
30 days or less	0	.	15	16	15	16
31 days or more	0	.	64	115	64	115
Superior Court	0	.	0	.	0	.
120 days or less	0	.	0	.	0	.
121 days or more	0	.	0	.	0	.
Total	0	.	79	96	79	96

### Population Demographics on March 31, 2006.

Race/ethnicity and age	Total	
	Number	Percent
African American		
13	1	1
14	4	5
15	15	19
16	25	32
17	14	18
18	1	1
Subtotal	60	76
Hispanic		
14	1	1
16	2	3
Subtotal	3	4
White		
15	3	4
16	2	3
17	11	14
Subtotal	16	20
Total	79	100

### Youth's Involvement on March 31, 2006.

Sentenced		
Aftercare	9	156
Child Mental Health	8	95
Division of Family Services	5	83
Serious Juvenile Offender and Comprehensive Aftercare Program	40	104
Indefinite sentence	46	86
Mandatory sentence	33	111
Family Court	79	96
Superior Court	0	.



## Releases, First Quarter 2006.

To whom released/program	Number	Percent	LOS in days	
			Mean	Maximum
Mowlds Cottage	42	100	204	386
Total	42	100	204	386

## Legal Status by Average LOS at Release, First Quarter 2006.

	Aftercare Revocation		Sentenced		Total	
	No.	LOS	No.	LOS	No.	LOS
Family Court	0	.	41	206	41	206
30 days or less	0	.	0	.	0	.
31 days or more	0	.	41	206	41	206
Superior Court	0	.	1	143	1	143
120 days or less	0	.	0	.	0	.
121 days or more	0	.	1	143	1	143
Total	0	.	42	204	42	204

## Crime Category at Release, First Quarter 2006.

Category	Number	Percent	LOS in days		
			Minimum	Mean	Maximum
Violent felony	22	52	143	219	386
Violent misdemeanor	1	2	200	200	200
Non-violent felony	9	21	150	198	248
Non-violent misdemeanor	6	14	143	182	245
Unclassified misdemeanor	1	2	163	163	163
Probation violation	3	7	134	183	238
Total	42	100	134	204	386

Distribution of Ferris School Releases by LOS, First Quarter 2006.