



**STATE OF DELAWARE
EXECUTIVE DEPARTMENT
OFFICE OF MANAGEMENT AND BUDGET**

To: John Frazer
From: Jorge Rodríguez-Labarca
Date: February 13, 2006
Subject: Fourth Quarter 2005 Ferris School Status Report

Admissions: There were 32 admissions during the fourth quarter of 2005.

Admission demographics: Of the 32 admissions during the fourth quarter of 2005, 25 were African Americans, six were whites and one was Hispanic.

Leading charges at admission: The most frequent leading charges at admission for the fourth quarter were: violation of probation, 9; and, robbery in the first degree, 3. Forty-four percent, or 14 youth, were admitted for violent felonies.

Length of stay: On December 31, there were 79 youth at the Ferris School for Boys with an average length of stay (LOS) was 114 days, a median LOS of 108 days, and a maximum LOS of 318 days.

On December 31, there were 79 Family Court youth with an average LOS of 114 days.

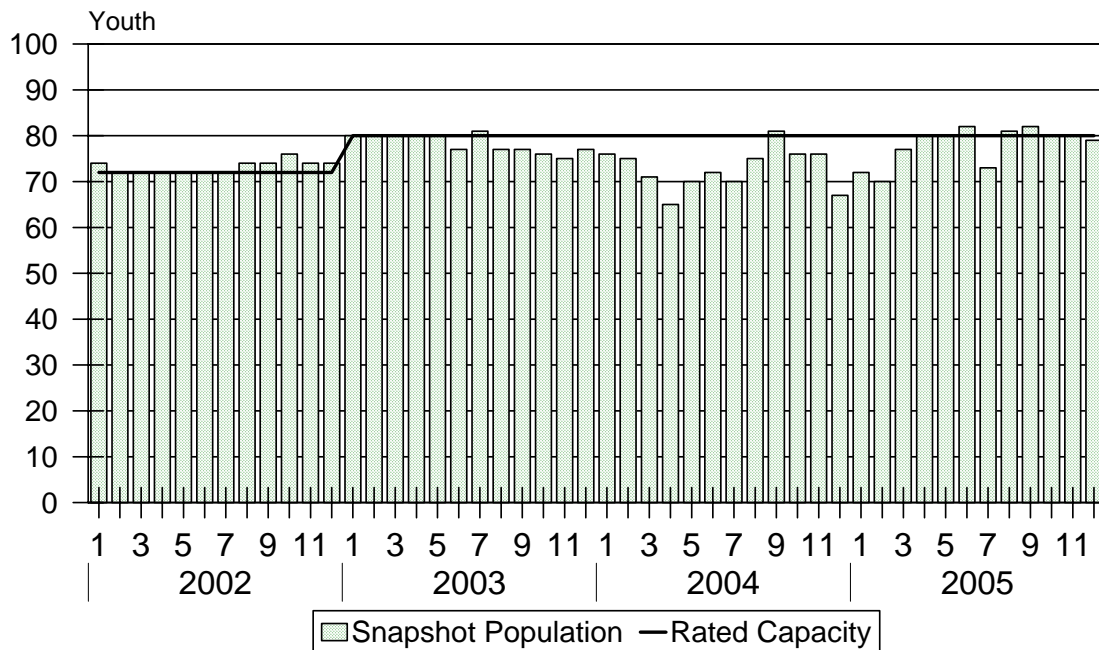
Snapshot demographics: Of the 79 youth at the Ferris School for Boys, there were 60 African Americans, 17 whites and two Hispanics.

Youth's status: On December 31, there were 44 youth serving indefinite sentences and 35 serving mandatory sentences.

Releases: 32 youth were released during the fourth quarter of 2005 with an average LOS of 205 days and a maximum LOS at release of 295 days.

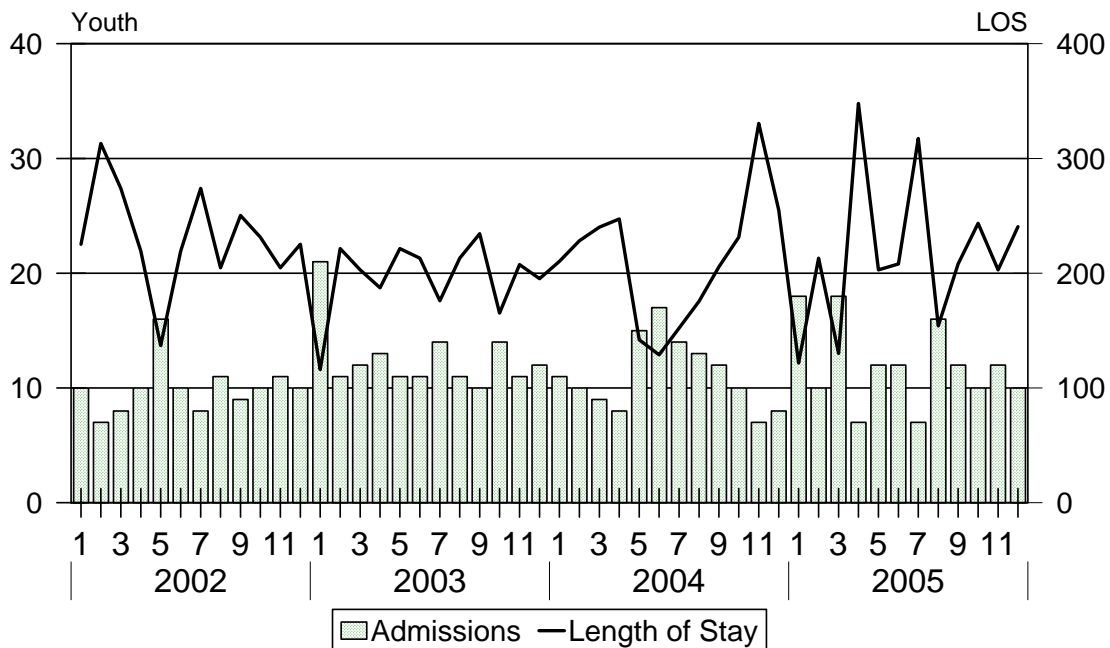


Ferris School Snapshot Population and Rated Capacity



Snapshot populations are taken at the end of any given month. The Ferris School capacity increased from 72 beds to 80 beds during January 2003.

Ferris School Admissions and Time at Ferris School



Length of Stay: Average length of stay in days at the Ferris School given monthly admissions and populations.

Admissions, Fourth Quarter 2005.

Month	Number	Percent
October	10	31
November	12	38
December	10	31
Total	32	100

Admission Demographics, Fourth Quarter 2005.

Race/ethnicity and age	Total	
	Number	Percent
African American		
14	1	3
15	3	9
16	16	50
17	4	13
18	1	3
Subtotal	25	78
Hispanic		
14	1	3
Subtotal	1	3
White		
15	1	3
17	5	16
Subtotal	6	19
Total	32	100

Admissions Profile for
Fourth Quarter 2005 Ferris School Admittees.

Admissions	<u>Youth</u>			<u>Admissions</u>		
	Number	Percent	Cum. %	Number	Percent	Cum. %
Total	32	100%	100%	245	100%	100%
First admission	0	0%	0%	0	0%	0%
Multiple admissions	32	100%	100%	245	100%	100%
2 nd	5	16%	16%	10	4%	4%
3 rd	5	16%	31%	15	6%	10%
4 th	2	6%	38%	8	3%	13%
5 th	3	9%	47%	15	6%	20%
6 th	2	6%	53%	12	5%	24%
7 th	1	3%	56%	7	3%	27%
8 th	1	3%	59%	8	3%	31%
9 th	2	6%	66%	18	7%	38%
10 th	1	3%	69%	10	4%	42%
11 th	1	3%	72%	11	4%	47%
12 th	2	6%	78%	24	10%	56%
13 th	1	3%	81%	13	5%	62%
14 th	0	.	81%	0	.	62%
15 th	2	6%	88%	30	12%	74%
16 th	4	13%	100%	64	26%	100%

Note: First admission means that, heretofore, a juvenile had never been admitted to Secure Detention, Level III Residential, Level IV, Level V, or Division of Family Services (DFS) and Child Mental Health (CMH) programs that provide residential services. Included in the count of multiple admissions are those admitted to Secure Detention, Level III Residential, Level IV, Level V, and DFS and CMH programs that provide residential services which are classified by DSCYF as crisis bed; mental health; residential group care; treatment center; residential Interagency Collaborative Team; residential treatment, mental health; and residential treatment, substance abuse.

**Admission Profile by Dispositional
Level for Fourth Quarter 2005 Ferris School Admittees.**

Admissions	Number and percent of youth							
	<u>Sec. Det.</u>		<u>L. V</u>		<u>L. IV</u>		<u>L. IIIR</u>	
	N.	%	N.	%	N.	%	N.	%
Total	32	97%	32	100%	32	100%	32	100%
No prior admissions	2	6%	10	31%	15	47%	16	50%
Multiple admissions	30	91%	22	69%	17	53%	16	50%
2 nd	6	19%	11	34%	3	9%	4	13%
3 rd	5	16%	3	9%	5	16%	5	16%
4 th	5	16%	4	13%	4	13%	5	16%
5 th	4	13%	4	13%	1	3%	1	3%
6 th	5	16%	0	.	1	3%	1	3%
7 th	4	13%	0	.	2	6%	0	.
8 th	0	.	0	.	1	3%	0	.

Note: Included in the count of multiple admissions are those admitted to Secure Detention (Sec. Det.), Level III Residential (L. IIIR), Level IV, Level V, and Division of Family Services and Child Mental Health programs that provide residential services which are classified by DSCYF as crisis bed; mental health; residential group care; treatment center; residential Interagency Collaborative Team; residential treatment, mental health; and residential treatment, substance abuse.

Reading this table: This table shows that 91 percent of youth admitted to the Ferris School during the fourth quarter of 2005 had prior admissions to secure detention, 69 percent to Level V, 53 percent to Level IV, and 50 percent to Level IIIR. All youth without prior Level V admissions had prior admissions to Secure Detention.

Leading Charge at Admission, Fourth Quarter 2005.

Leading charge	
Assault in the second degree	1
Assault in the third degree	1
Burglary in the second degree	1
Burglary in the third degree	1
Criminal impersonation	1
Distribution of a controlled substance within 300 feet of a park	1
Manslaughter	1
Menacing, aggravated	1
Offensive touching	1
Possession of a deadly weapon by a person prohibited	1
Possession of a deadly weapon during the commission of a felony	1
Possessing a destructive weapon	1
Possession of burglar's tools	1
Possession with intent to deliver narcotics	1
Receiving stolen property, misdemeanor	1
Robbery in the first degree	3
Robbery in the second degree	1
Robbery in the second degree, attempted	1
Terroristic threatening, misdemeanor	1
Theft, misdemeanor	1
Trafficking in cocaine from 10 to 50 grams	1
Violation of probation	9
Total	32

Crime Category at Admission, Fourth Quarter 2005.

Category	Number	Percent
Violent felony	14	44
Violent misdemeanor	2	6
Non-violent felony	3	9
Non-violent misdemeanor	4	13
Probation violation	9	28
Total	32	100

Length of Stay on December 31, 2005.

LOS in intervals	Youth	Length of Stay		
	Number	Mean	Median	Maximum
1 to 3 days	1	2	2	2
4 to 14 days	3	12	13	13
15 to 29 days	6	20	17	26
30 to 59 days	12	45	46	59
60 to 119 days	20	89	90	110
120 to 179 days	24	149	148	178
180 plus days	13	230	219	318
Summary	79	114	108	318

Legal Status by Average LOS at Snapshot on December 31, 2005.

	Aftercare Revocation		Sentenced		Total	
	No.	LOS	No.	LOS	No.	LOS
Family Court	0	.	79	114	79	114
30 days or less	0	.	10	16	10	16
31 days or more	0	.	69	129	69	129
Superior Court	0	.	0	.	0	.
120 days or less	0	.	0	.	0	.
121 days or more	0	.	0	.	0	.
Total	0	.	0	.	79	114

Population Demographics on December 31, 2005.

Race/ethnicity and age	Total	
	Number	Percent
African American		
14	2	3
15	12	15
16	23	29
17	22	28
18	1	1
Subtotal	60	76
Hispanic		
14	1	1
16	1	1
Subtotal	2	4
White		
15	4	5
16	2	3
17	10	13
18	1	1
Subtotal	17	22
Total	79	100

Youth's Involvement on December 31, 2005.

Sentenced		
Aftercare	13	161
Child Mental Health	11	131
Division of Family Services	8	115
Serious Juvenile Offender and Comprehensive Aftercare Program	47	117
Indefinite sentence	44	100
Mandatory sentence	35	134
Family Court	79	114
Superior Court	0	.

Releases, Fourth Quarter 2005.

To whom released/program	Number	Percent	<u>LOS in days</u>	
			Mean	Maximum
Mowlds Cottage	32	100	205	295
Total	32	100	205	295

Legal Status by Average LOS at Release, Fourth Quarter 2005.

	<u>Aftercare Revocation</u>		<u>Sentenced</u>		<u>Total</u>	
	No.	LOS	No.	LOS	No.	LOS
Family Court	0	.	31	205	31	205
30 days or less	0	.	0	.	0	.
31 days or more	0	.	31	205	31	205
Superior Court	0	.	1	204	1	204
120 days or less	0	.	0	.	0	.
121 days or more	0	.	1	204	1	204
Total	0	.	32	205	32	205

Crime Category at Release, Fourth Quarter 2005.

Category	Number	Percent	<u>LOS in days</u>		
			Minimum	Mean	Maximum
Violent felony	13	41	181	217	295
Violent misdemeanor	3	9	176	189	211
Non-violent felony	7	22	182	204	239
Non-violent misdemeanor	6	19	148	194	249
Probation violation	3	9	156	190	225
Total	32	100	148	205	295

Distribution of Ferris School Releases by LOS, Fourth Quarter 2005.