



**State of Delaware Executive Department  
Office of Management and Budget**

April 8, 2009

To: Sentencing Research and Evaluation  
Sentencing Accountability Commission

Fr: Jack O'Connell and Philisa J. Weidlein-Crist

Subj: Department of Corrections Population Patterns 2000 to March 2009

Attached are four graphs providing a summary of the Department of Correction Bureau of Prison's population based on the daily population reports for the period of January 2000 to March 2009. Also, on the second page of this report is a table that provides a detailed quarterly breakout of DOC facility types by offender status. Offender status types include offenders sentenced for Level V Prison (offender serving more than one year), Level V Jail (offenders serving one year or less), Level IV offenders, Level III offenders, and detainees.

Graph 1 shows that between January 2000 and March 2009 that the detention, Level V and Level IV facilities populations have decreased from about 7,250 to 6,900. The peak daily population during this period was September 2007 when the population surpassed 7,300.

Graph 2 provides a year-to-year overlay for the total DOC population. It shows that there was a long period of slow population growth between 2002 and 2005 when the population remained relatively stable, and in 2003, the population actually decreased. In the second half of 2005, a separation began and in 2006 and 2007 a period of accelerated growth became evident. In 2006 and 2007, the population peaked at about 7,250 and 7,375, respectively, in the fourth quarter of each year. Now, in 2009, the average population is closer to 6,950 and decreasing which is significantly lower than the past 4 years during the first quarter.

Graph 3 shows the same type of year-to-year overlay but for only the detention and Level V major institutions beds. This population, while smaller, shows a very similar pattern seen in Graph 2.

Graph 4 shows that the Level IV work releases and VOP Centers have remained tightly bunched until this year in which the population is at it's highest at 1,350. The Level IV facility population has increased steadily, noting that there are approximately 100 to 150 more individuals than there were last year at this time, the decrease in the overall Department of Corrections was in the major institutions.



**Budget Development, Planning and Administration  
Statistical Analysis Center**

410 Federal Street • Suite 6 • Dover, DE 19901  
Phone: (302) 739-4626 • Fax: (302) 739-4630 • [www.omb.delaware.gov](http://www.omb.delaware.gov)

*DOC Facility Type by Offender Status Type by Quarter*

		Offender Status					Totals
		Level V Prison <sup>1</sup>	Level V Jail <sup>2</sup>	Level IV <sup>3</sup>	Level III <sup>3</sup>	Detention <sup>4</sup>	
Prison Facilities <sup>5</sup>	4 <sup>th</sup> Quarter 2007 (12/28/07)	3,785	664	148	16	1,243	5,856
	1 <sup>st</sup> Quarter 2008 (3/31/08)	3,809	617	133	12	1,346	5,917
	2 <sup>nd</sup> Quarter 2008 (6/30/08)	3,723	555	48	5	1,537	5,868
	3 <sup>rd</sup> Quarter 2008 (9/30/08)	3,739	597	42	2	1,565	5,945
	4 <sup>th</sup> Quarter 2008 (12/31/08)	3,642	535	56	7	1,398	5,638
	1 <sup>st</sup> Quarter 2009 (3/31/09)	3,642	588	57	3	1,335	5,625
Community Corrections Facilities <sup>6</sup>	4 <sup>th</sup> Quarter 2007 (12/28/07)	114	55	945	6	70	1,190
	1 <sup>st</sup> Quarter 2008 (3/31/08)	106	57	952	15	63	1,193
	2 <sup>nd</sup> Quarter 2008 (6/30/08)	136	64	1,027	8	63	1,298
	3 <sup>rd</sup> Quarter 2008 (9/30/08)	150	64	999	2	64	1,279
	4 <sup>th</sup> Quarter 2008 (12/31/08)	147	68	976	1	70	1,262
	1 <sup>st</sup> Quarter 2009 (3/31/09)	155	77	965	3	96	1,296
Delaware State Hospital <sup>7</sup> and Interstate Compact <sup>8</sup>	4 <sup>th</sup> Quarter 2007 (12/28/07)	33	1	1	0	22	57
	1 <sup>st</sup> Quarter 2008 (3/31/08)	35	2	2	1	17	57
	2 <sup>nd</sup> Quarter 2008 (6/30/08)	39	1	0	1	18	59
	3 <sup>rd</sup> Quarter 2008 (9/30/08)	40	0	1	0	13	54
	4 <sup>th</sup> Quarter 2008 (12/31/08)	41	2	0	0	11	54
	1 <sup>st</sup> Quarter 2009 (3/31/09)	38	1	0	1	15	55
Totals	4 <sup>th</sup> Quarter 2007 (12/28/07)	3,932	720	1,094	22	1,335	7,103
	1 <sup>st</sup> Quarter 2008 (3/31/08)	3,950	676	1,087	28	1,426	7,167
	2 <sup>nd</sup> Quarter 2008 (6/30/08)	3,898	620	1,075	14	1,618	7,225
	3 <sup>rd</sup> Quarter 2008 (9/30/08)	3,929	661	1,042	4	1,642	7,278
	4 <sup>th</sup> Quarter 2008 (12/31/08)	3,830	605	1,032	8	1,479	6,954
	1 <sup>st</sup> Quarter 2009 (3/31/09)	3,835	666	1,022	7	1,446	6,976

<sup>1</sup> Level V Prison refers to offenders sentenced to greater than one year.

<sup>2</sup> Level V Jail refers to offenders sentenced to one year or less, or offenders serving an “indefinite” sentence such as Boot Camp.

<sup>3</sup> Offenders sentenced to probation Levels IV and III may be held with a court order while awaiting a probation program.

<sup>4</sup> Detention refers to those offenders who are held in pre-sentence custody.

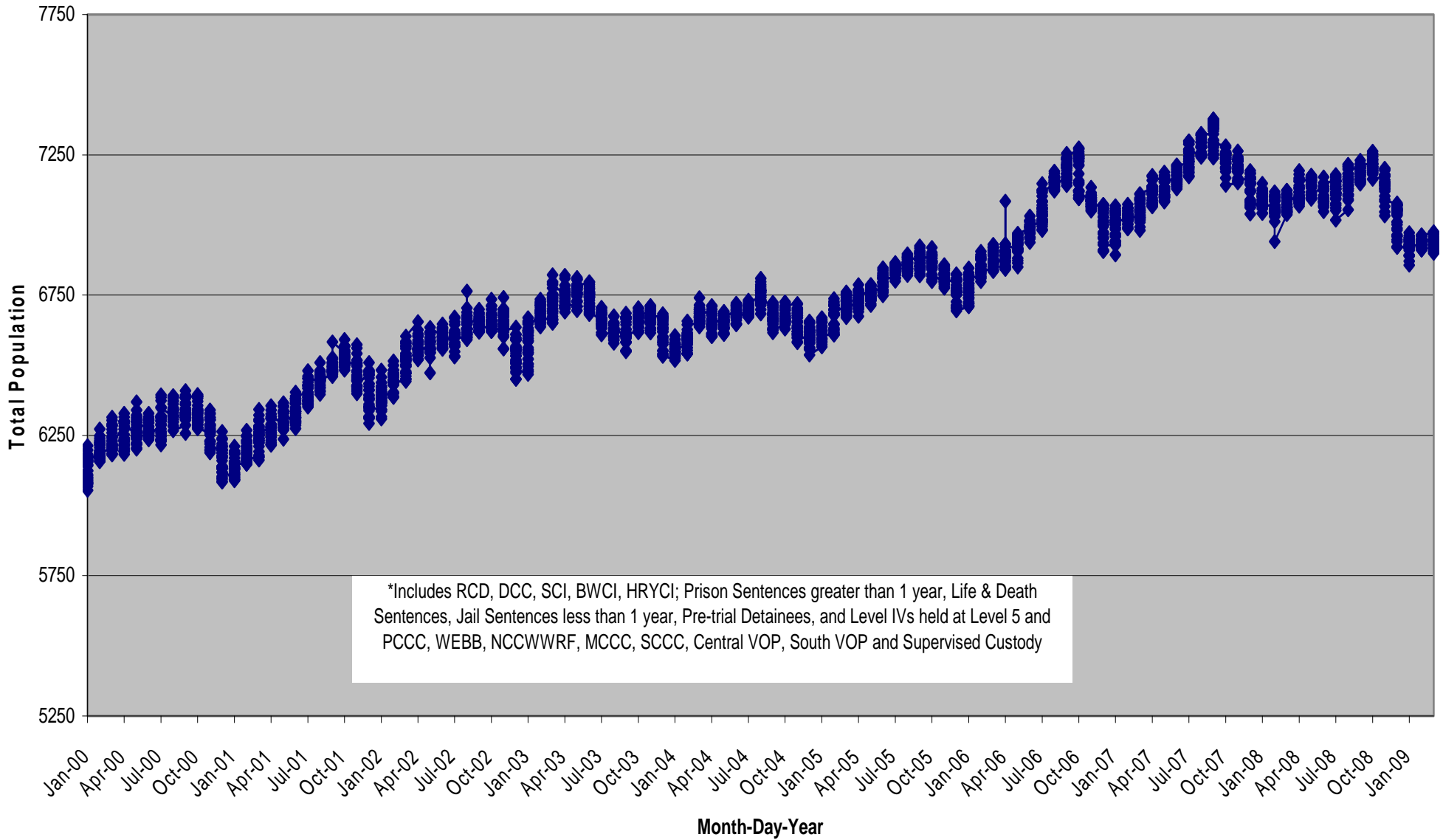
<sup>5</sup> Prison Facilities include: Vaughn Correctional Center, Howard Young Correctional Institute, Sussex Correctional Institute and Baylor Women’s Correctional Institute and WEBB (as of July 1, 2008, WEBB will be reported as a Community Corrections Facility).

<sup>6</sup> Community Corrections Facilities include PCCC, NCCWRF, MCCC, Central VOP, South VOP, and SCCC and WEBB (as of July 1, 2008, WEBB began reporting as a Community Corrections Facility). Community Corrections Facilities house Level IV offenders, work release and those assigned to addiction treatment. Community Corrections Facilities in specific locations also house Violation of Probation offenders, including some in detention status. Some Level V offenders may also be housed at Level IV facilities.

<sup>7</sup> Delaware State Hospital houses pre-sentenced and sentenced offenders with psychiatric issues, or those awaiting psychiatric evaluations.

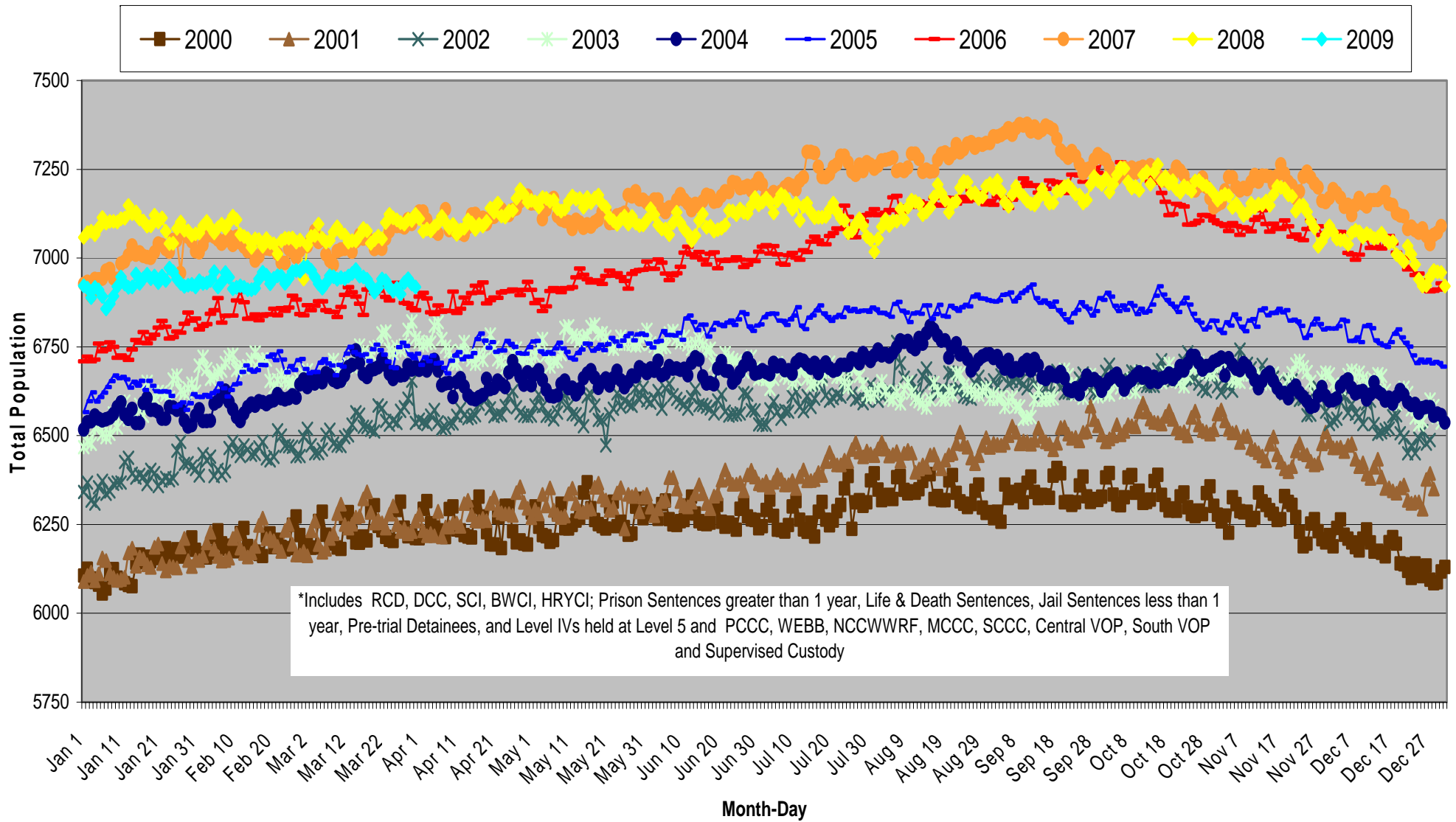
<sup>8</sup> Compact Cases refers to offenders housed per interstate compact agreements.

**Graph 1**  
**Detention, Level V and Level IV\***  
**Total Major Institutions and Community Corrections Facilities Population Jan 00-Mar 09\*\***



\*\*Compiled using information reported on DOC Daily Population Sheets.

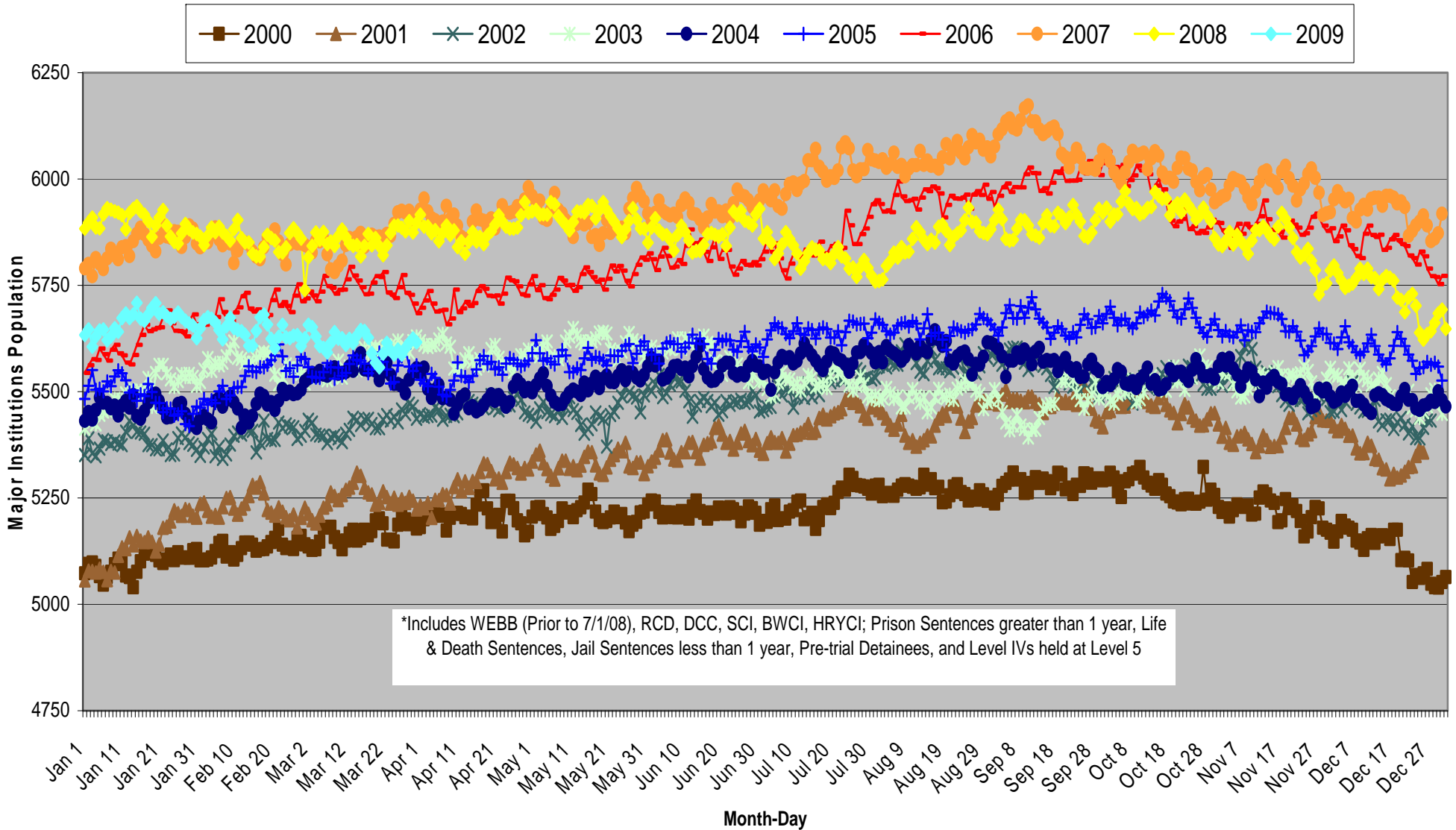
**Graph 2**  
**Detention, Level V and Level IV\***  
**Total Major Institutions and Community Corrections Facilities Total Population by Year 2000-Mar 2009\*\***



\*Includes RCD, DCC, SCI, BWCI, HRYCI; Prison Sentences greater than 1 year, Life & Death Sentences, Jail Sentences less than 1 year, Pre-trial Detainees, and Level IVs held at Level 5 and PCCC, WEBB, NCCWWRF, MCCC, SCCC, Central VOP, South VOP and Supervised Custody

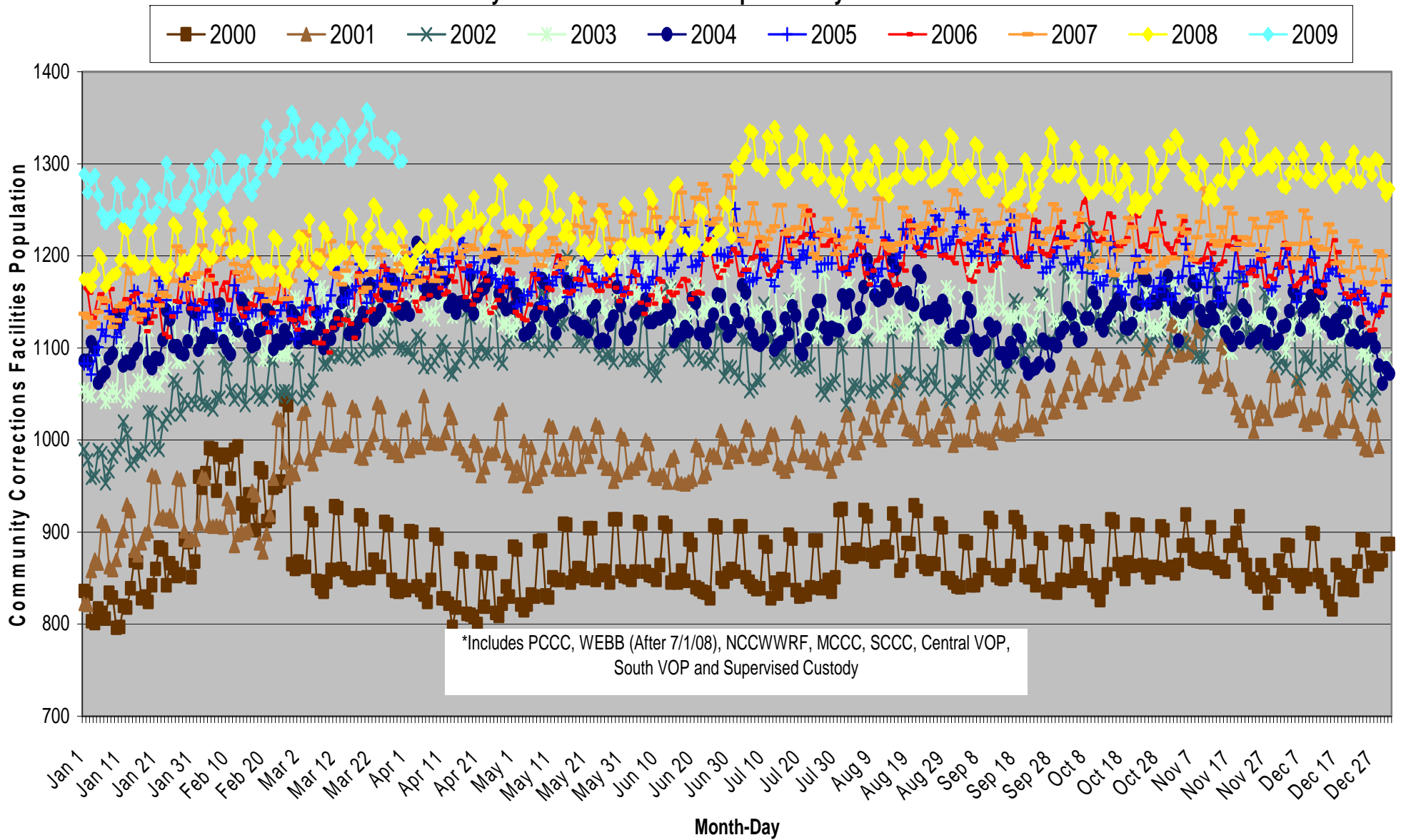
\*\*Compiled using information reported on DOC Daily Population Sheets.

**Graph 3**  
**Detention and Level V (Jail and Prison)\***  
**Total Major Institutions Population by Year 2000-Mar 2009\*\***



\*\*Compiled using information reported on DOC Daily Population Sheets.

**Graph 4**  
**Level IV Work Release, VOP Centers and Supervised Custody\***  
**Total Community Corrections Facilities Population by Year 2000-Mar 2009\*\***



\*\*Compiled using information reported on DOC Daily Population Sheets.