



**State of Delaware Executive Department  
Office of Management and Budget**

January 11, 2010

To: Sentencing Research and Evaluation Committee  
Sentencing Accountability Commission

Fr: Philisa J. Weidlein-Crist and Jack O'Connell

Subj: Department of Corrections Population Patterns 2000 to December 2009

Attached are four graphs providing a summary of the Department of Correction Bureau of Prison's population based on the daily population reports for the period of January 2000 to December 2009. Also, on the second page of this report is a table that provides a detailed quarterly breakout of DOC facility types by offender status since the 4<sup>th</sup> quarter of 2007. Offender status types include offenders sentenced for Level V Prison (offender serving more than one year), Level V Jail (offenders serving one year or less), Level IV offenders, Level III offenders, and detainees.

Graph 1 shows that between January 2000 and December 2009 that the detention, Level V and Level IV facilities populations have increased from about 6,100 to 6,600. The peak daily population during this period was September 2007 when the population surpassed 7,300. The last time this population hit a similar low was December 31, 2005 (6,694).

Graph 2 provides a year-to-year overlay for the total DOC population. It shows that there was a long period of slow population growth between 2002 and 2005 when the population remained relatively stable, and in 2003, the population actually decreased. In the second half of 2005, a separation began and in 2006 and 2007 a period of accelerated growth became evident. In 2006 and 2007, the population peaked at about 7,250 and 7,375, respectively, in the fourth quarter of each year. Now, in 2009, the average population is closer to 6,600.

Graph 3 shows the same type of year-to-year overlay but for only the detention and Level V major institutions beds. On December 31, 2009, this population was 5,446. This population, while smaller, shows a very similar pattern seen in Graph 2.

Graph 4 shows that the Level IV work releases and VOP Centers have remained tightly bunched until this year in which the population hit it's highest at 1,350 in March. The Level IV facility population has decreased steadily, noting that there are approximately 100 to 150 less individuals than there were last year at this time.



**Budget Development, Planning and Administration  
Statistical Analysis Center**

410 Federal Street • Suite 6 • Dover, DE 19901  
Phone: (302) 739-4626 • Fax: (302) 739-4630 • [www.omb.delaware.gov](http://www.omb.delaware.gov)

**DOC Facility Type by Offender Status Type by Quarter**

		Offender Status					Totals
		Level V Prison <sup>1</sup>	Level V Jail <sup>2</sup>	Level IV <sup>3</sup>	Level III <sup>3</sup>	Detention <sup>4</sup>	
Prison Facilities <sup>5</sup>	4th Quarter 2007 (12/28/07)	3,785	664	148	16	1,243	5,856
	1st Quarter 2008 (3/31/08)	3809	617	133	12	1346	5917
	2nd Quarter 2008 (6/30/08)	3723	555	48	5	1537	5868
	3rd Quarter 2008 (9/30/08)	3739	597	42	2	1565	5945
	4th Quarter 2008 (12/31/08)	3642	535	56	7	1398	5638
	1st Quarter 2009 (3/31/09)	3642	588	57	3	1335	5625
	2nd Quarter 2009 (6/30/09)	3659	558	68	4	1335	5624
	3rd Quarter 2009 (9/30/09)	3616	507	47	5	1540	5715
	4th Quarter 2009 (12/31/09)	3578	480	54	5	1323	5440
Community Corrections Facilities <sup>6</sup>	4th Quarter 2007 (12/28/07)	114	55	945	6	70	1,190
	1st Quarter 2008 (3/31/08)	106	57	952	15	63	1193
	2nd Quarter 2008 (6/30/08)	136	64	1027	8	63	1298
	3rd Quarter 2008 (9/30/08)	150	64	999	2	64	1279
	4th Quarter 2008 (12/31/08)	147	68	976	1	70	1262
	1st Quarter 2009 (3/31/09)	155	77	965	3	96	1296
	2nd Quarter 2009 (6/30/09)	147	69	908	1	78	1203
	3rd Quarter 2009 (9/30/09)	126	51	882	2	84	1145
	4th Quarter 2009 (12/31/09)	134	66	793	2	108	1103
Delaware State Hospital <sup>7</sup> and Interstate Compact <sup>8</sup>	4th Quarter 2007 (12/28/07)	33	1	1	0	22	57
	1st Quarter 2008 (3/31/08)	35	2	2	1	17	57
	2nd Quarter 2008 (6/30/08)	39	1	0	1	18	59
	3rd Quarter 2008 (9/30/08)	40	0	1	0	13	54
	4th Quarter 2008 (12/31/08)	41	2	0	0	11	54
	1st Quarter 2009 (3/31/09)	38	1	0	1	15	55
	2nd Quarter 2009 (6/30/09)	40	2	0	0	14	56
	3rd Quarter 2009 (9/30/09)	37	2	1	0	15	55
	4th Quarter 2009 (12/31/09)	39	1	0	0	19	59
Totals	4th Quarter 2007 (12/28/07)	3,932	720	1,094	22	1,335	7,103
	1st Quarter 2008 (3/31/08)	3950	676	1087	28	1426	7167
	2nd Quarter 2008 (6/30/08)	3898	620	1075	14	1618	7225
	3rd Quarter 2008 (9/30/08)	3929	661	1042	4	1642	7278
	4th Quarter 2008 (12/31/08)	3830	605	1032	8	1479	6954
	1st Quarter 2009 (3/31/09)	3835	666	1022	7	1446	6976
	2nd Quarter 2009 (6/30/09)	3846	629	976	5	1427	6883
	3rd Quarter 2009 (9/30/09)	3779	560	930	7	1639	6915
	4th Quarter 2009 (12/31/09)	3751	547	847	7	1450	6602

<sup>1</sup> Level V Prison refers to offenders sentenced to greater than one year.

<sup>2</sup> Level V Jail refers to offenders sentenced to one year or less, or offenders serving an “indefinite” sentence such as Boot Camp.

<sup>3</sup> Offenders sentenced to probation Levels IV and III may be held with a court order while awaiting a probation program.

<sup>4</sup> Detention refers to those offenders who are held in pre-sentence custody.

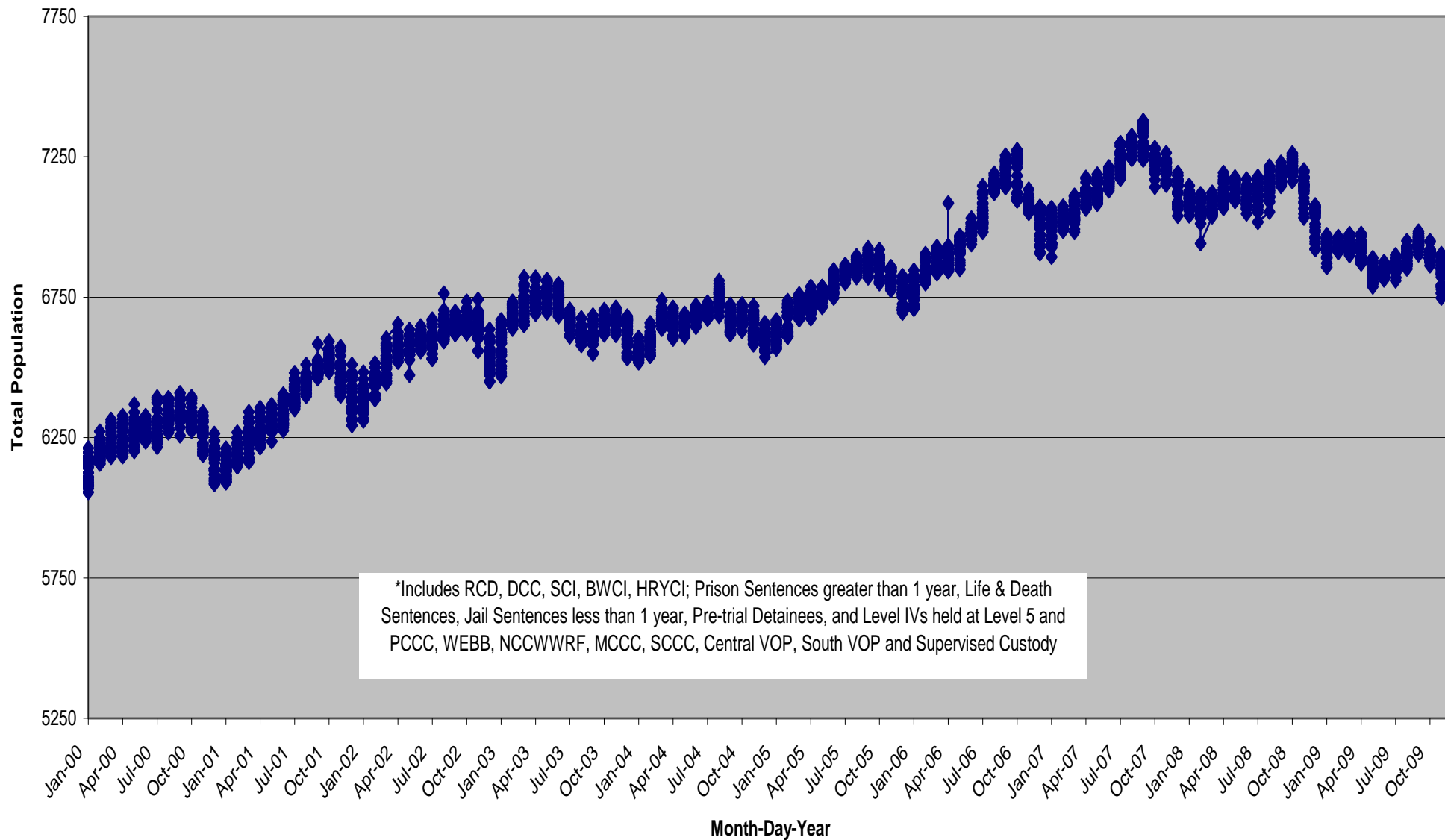
<sup>5</sup> Prison Facilities include: Vaughn Correctional Center, Howard Young Correctional Institute, Sussex Correctional Institute and Baylor Women’s Correctional Institute and WEBB (as of July 1, 2008, WEBB began reporting as a Community Corrections Facility).

<sup>6</sup> Community Corrections Facilities include PCCC, NCCWRF, MCCC, Central VOP, South VOP, and SCCC and WEBB (as of July 1, 2008, WEBB began reporting as a Community Corrections Facility). Community Corrections Facilities house Level IV offenders, work release and those assigned to addiction treatment. Community Corrections Facilities in specific locations also house Violation of Probation offenders, including some in detention status. Some Level V offenders may also be housed at Level IV facilities.

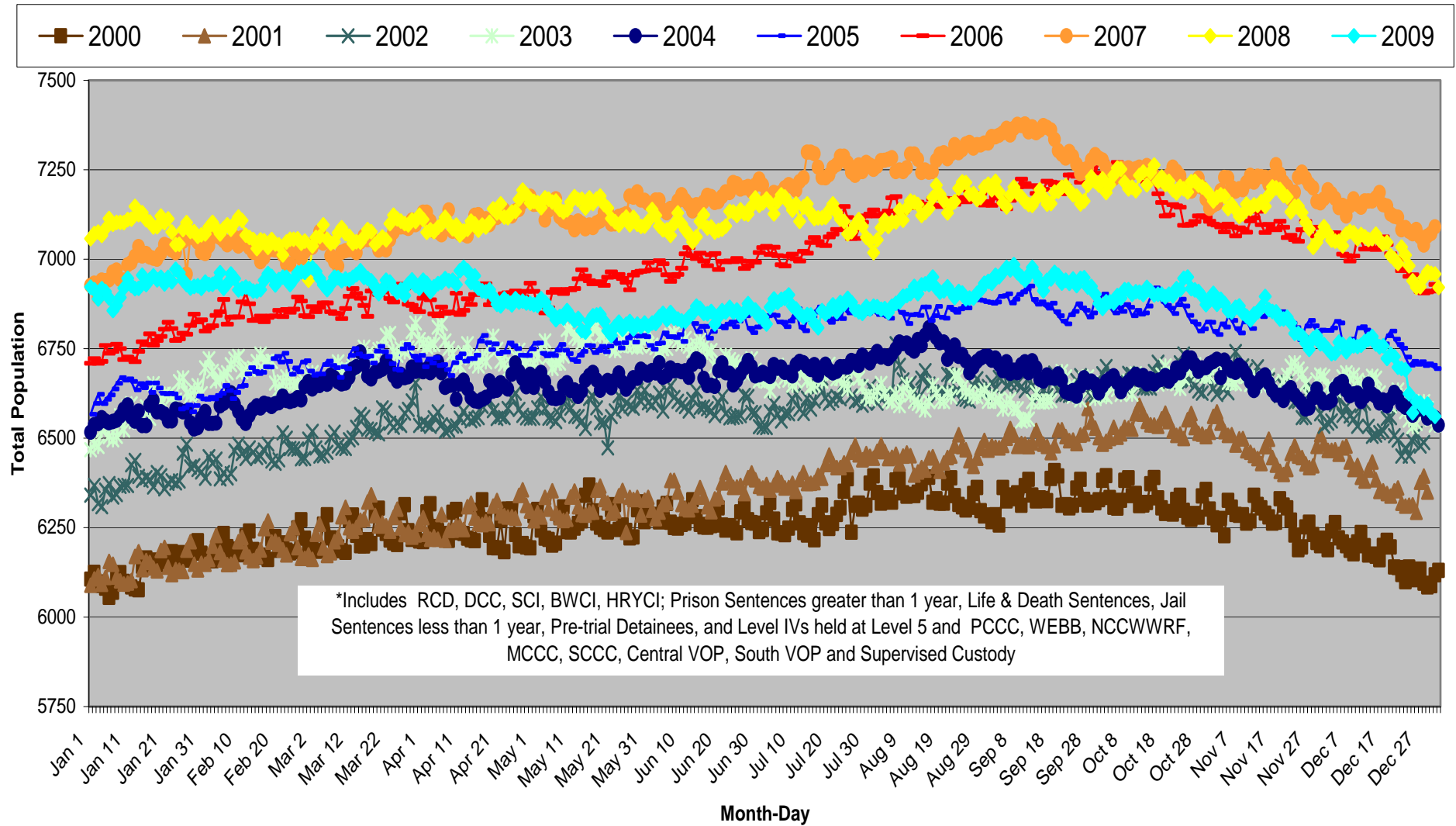
<sup>7</sup> Delaware State Hospital houses pre-sentenced and sentenced offenders with psychiatric issues, or those awaiting psychiatric evaluations.

<sup>8</sup> Compact Cases refers to offenders housed per interstate compact agreements.

**Graph 1**  
**Detention, Level V and Level IV\***  
**Total Major Institutions and Community Corrections Facilities Population Jan 00-Dec 09\*\***



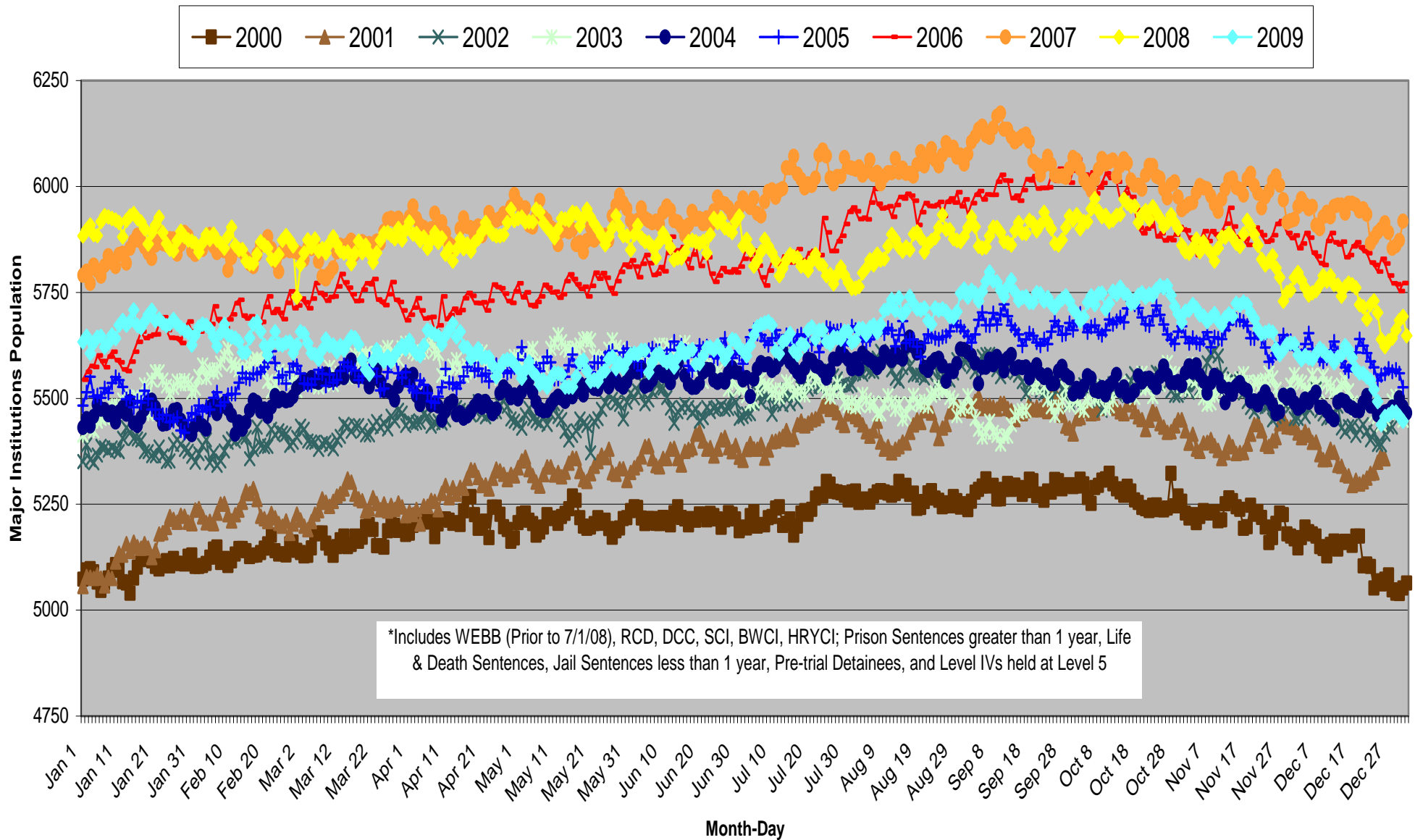
**Graph 2**  
**Detention, Level V and Level IV\***  
**Total Major Institutions and Community Corrections Facilities Total Population by Year 2000-Dec 2009\*\***



\*\*Compiled using information reported on DOC Daily Population Sheets.

DelSAC Dec. 2009

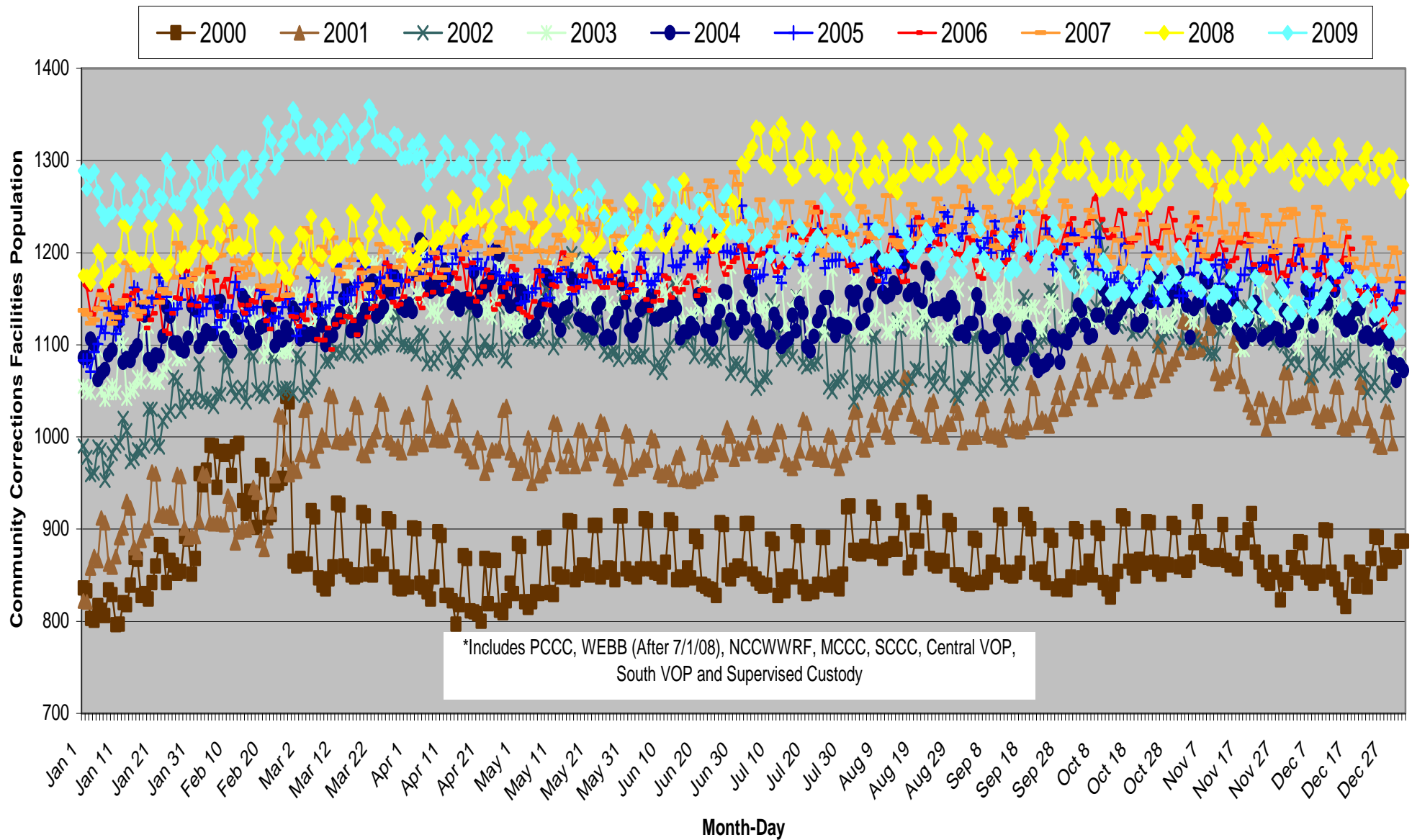
**Graph 3**  
**Detention and Level V (Jail and Prison)\***  
**Total Major Institutions Population by Year 2000-Dec 2009\*\***



\*\*Compiled using information reported on DOC Daily Population Sheets.

DelSAC Dec. 2009

**Graph 4**  
**Level IV Work Release, VOP Centers and Supervised Custody\***  
**Total Community Corrections Facilities Population by Year 2000-Dec 2009\*\***



\*\*Compiled using information reported on DOC Daily Population Sheets.

DelSAC Dec. 2009